



Eganville Community Expansion Project Virtual Open House

Presented on behalf of Enbridge Gas



Eganville Community Expansion Project Virtual Open House



Welcome

- Press the next button to navigate to the next slide at any time.
- To return to the previous slide, press the previous button.
- You can mute the audio at any time by pressing the speaker icon.
- The presentation slides as well as the audio script are available for download (see the Resources tab in the top right corner).
- Questions and comments can be submitted using the questionnaire found in the Resources tab.
- If you would like to receive future Project updates, please complete the "Contact Information" section of the questionnaire.

Our commitment

- Enbridge Gas is committed to involving Indigenous communities, agencies, interest groups, and community members.
- We will provide up-to-date information in an open, honest, and respectful manner, and will carefully consider your input.
- Enbridge Gas provides safe and reliable delivery of natural gas to more than 3.8 million residential, commercial, and industrial customers across Ontario.
- Enbridge Gas is committed to environmental stewardship and conducts its operations in an environmentally responsible manner.



Eganville Community Expansion Project Virtual Open House

Purpose of the Virtual Open House

- Provide a safe alternative to an in-person meeting due to the on-going COVID-19 pandemic.
- Consult with Indigenous communities, and engage with members of the public, and regulatory authorities regarding the proposed pipeline route, potential impacts, and proposed mitigations.
- Provide an opportunity for these individuals and any affected landowners and the general public to review the proposed Project, and to ask any questions and/or provide comments to representatives from Enbridge Gas and Stantec.
- Print copies of these Open House Materials are also available for in-person review at the following locations
 - Township of Bonnechere Valley, 49 Bonnechere Street, Eganville (Municipal Office)
 - Township of Admaston/Bromley, 477 Stone Road, R.R.2, Renfrew (Municipal Office)
 - North Algona Wilberforce Township, 1091 Shaw Woods Road, Eganville (Municipal Office)



Eganville Community Expansion Project Virtual Open House



Land Acknowledgement

We respectfully acknowledge that the Project is located in the traditional and treaty territory of the Michi Saagiig (Mississauga) and Chippewa Nations, collectively known as the Williams Treaties First Nations – Curve Lake First Nation, Hiawatha First Nation, Alderville First Nation, Mississaugas of Scugog Island First Nation, Chippewas of Georgina Island First Nation, Mohawks of the Bay of Quinte, Algonquins of Ontario and Algonquins of Pikwakanagan.



Eganville Community Expansion Project

Virtual Open House



Indigenous Peoples Policy

Enbridge Inc. recognizes the diversity of Indigenous peoples who live where we work and operate. We understand from history the destructive impacts on the social and economic wellbeing of Indigenous Peoples. Enbridge Inc. recognizes and realizes the importance of reconciliation between Indigenous communities and the broader society. Positive relationships with Indigenous peoples, based on mutual respect and focused on achieving common goals, will create positive outcomes for Indigenous communities. Enbridge Inc. commits to pursue sustainable relationships with Indigenous Nations and groups in proximity to where Enbridge Inc. conducts business. To achieve this, Enbridge Inc. will govern itself by the following principles:

- We recognize the legal and constitutional rights possessed by Indigenous peoples, and the importance of the relationship between Indigenous Peoples and their traditional lands and resources. We commit to working with Indigenous communities in a manner that recognizes and respects those legal and constitutional rights and the traditional lands and resources to which they apply. We commit to ensuring that our projects and operations are carried out in an environmentally responsible manner.
- We understand the importance of the United Nations Declaration on the Rights of Indigenous Peoples in the context of existing Canadian law and the commitments that the government has made to protecting the rights of Indigenous Peoples.
- We engage in forthright and sincere consultation with Indigenous Peoples about Enbridge Inc. projects and operations through processes that seek to achieve early and meaningful engagement. Indigenous engagement help define our projects that may occur on lands traditionally occupied by Indigenous Peoples.
- We commit to working with Indigenous Peoples to achieve benefits for them resulting from Enbridge Inc.'s projects and operations, including opportunities in training and education, employment, procurement, business development, and community development.
- We foster understanding of the history and culture of Indigenous Peoples among Enbridge Inc.'s employees and contractors, in order to create better relationships between Enbridge Inc. and Indigenous communities.

This commitment is a shared responsibility involving Enbridge Inc. and its affiliates, employees and contractors. We will conduct business in a manner that reflects the above principles. Enbridge Inc. will provide ongoing leadership and resources to effectively implement the above principles, including the development of implementation strategies and specific action plans. Enbridge Inc. commits to periodically review this policy so that it remains relevant and respects Indigenous culture and varied traditions.



Eganville Community Expansion Project

Virtual Open House



Project Overview

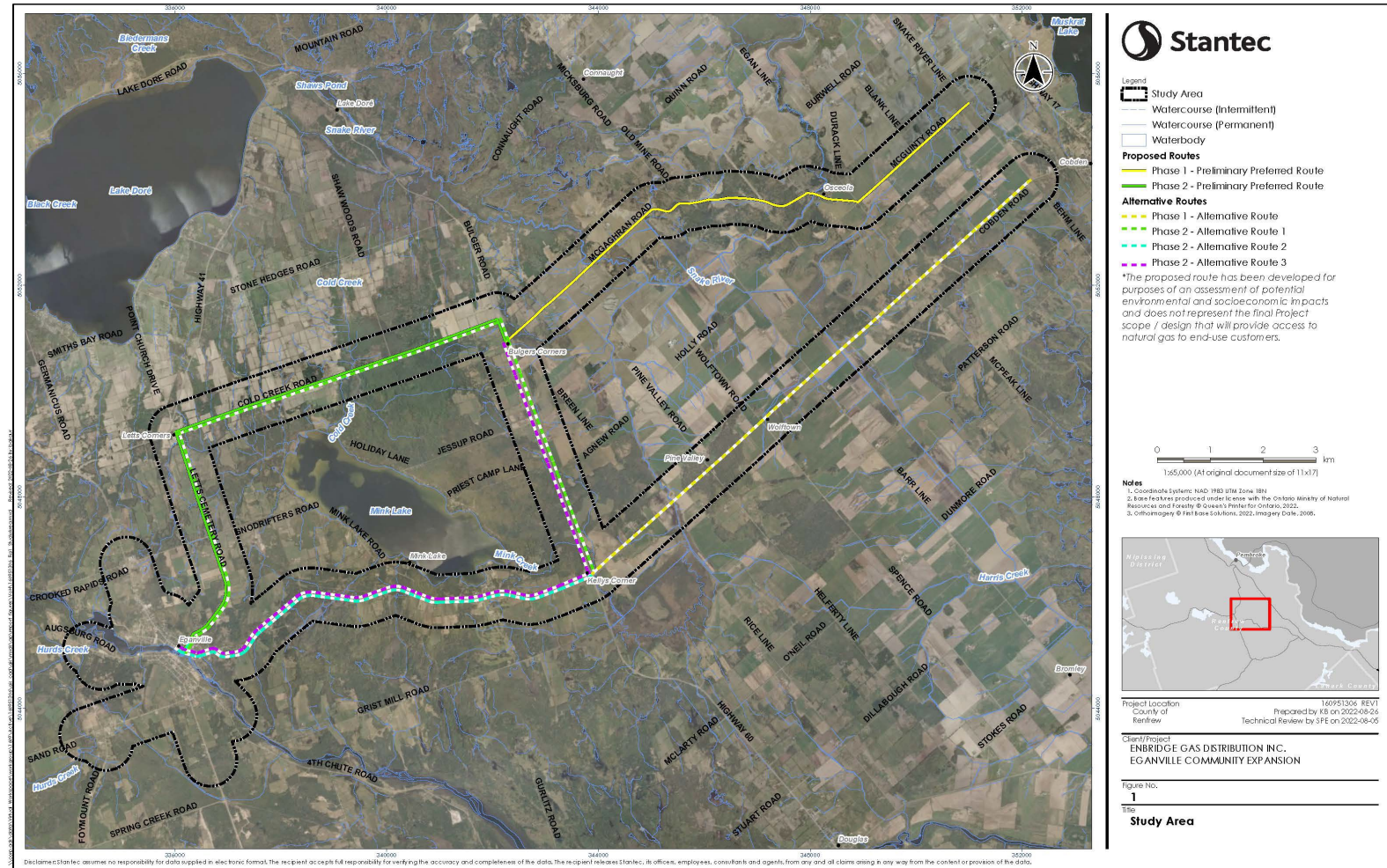
- The Project will involve
 - the installation of supply lateral natural gas pipeline composed of approximately 21 kilometers (km) of a combination of 4-inch steel and of 6- and 8-inch polyethylene (PE) pipeline
 - the installation of the distribution portion of the project includes approximately 22 km of a combination of 6-inch, 4- inch and 2-inch PE pipeline
 - a pressure reducing station located along the supply lateral.
- The preliminary preferred or alternate route and ancillary facilities will be constructed within the Townships of: Admaston/Bromley, Bonnechere Valley, and North Algona Wilberforce.
- The preliminary preferred route for the supply lateral is proposed to travel from Snake River Line along Mcguinty Road to Mcgaghran Road, north on Bulger Road, and then along Cold Creek Road and Letts Cemetery Road to Eganville.
- Alternate routes being considered for the supply lateral would travel from Snake River Line along Cobden Road and Highway 60; along Cobden Road and then north on Bulger Road to intercept with the preliminary preferred route; or, from Snake River Line along Mcguinty Road to Mcgaghran Road, south on Bulger Road and west on Highway 60.
- The Project is proposed to be placed into-service in phases, with the supply lateral proposed to be placed into service by 2024 and the distribution pipelines being placed into service beginning as early as 2025.



Eganville Community Expansion Project Virtual Open House

Map of Preliminary Preferred Routes and Alternate Routes

- The preliminary preferred or alternate route and ancillary facilities have been developed for purposes of an assessment of potential environmental and socioeconomic impacts
- This map does not represent the final project scope/design that will provide access to natural gas to end-use customers.



Eganville Community Expansion Project Virtual Open House



Environmental Study Process

As part of the planning process, Enbridge Gas has retained Stantec to undertake an Environmental Study for the Project. The Environmental Study will fulfill the requirements of the Ontario Energy Board's (OEB) "*Environmental Guidelines for the Location, Construction, and Operation of Hydrocarbon Pipelines and Facilities in Ontario, 7th Edition (2016)*".

The study will:

- Undertake engagement to understand the views of interested and potentially affected parties.
- Consult with Indigenous communities to understand interests and potential impacts.
- Be conducted during the earliest phase of the Project.
- Identify potential impacts of the Project.
- Develop environmental mitigation and protective measures to avoid or reduce potential impacts.
- Develop an appropriate environmental inspection, monitoring, and follow-up program.



Eganville Community Expansion Project Virtual Open House



Ontario Energy Board (OEB) Review and Approval Process

It is anticipated that the Environmental Report for the study will be completed in December 2022, after which Enbridge Gas may file a Leave-to-Construct (LTC) application. The application to the OEB will include the following information on the Project:

- The need for the Project
- Environmental Report and mitigation measures
- Project costs and economics
- Pipeline design and construction
- Land requirements
- Consultation with Indigenous Communities

Additional information about the OEB
process can be found at:
www.ontarioenergyboard.ca

The OEB will then hold a public hearing to review the Project. If the OEB determines that the Project is in the public interest, it will approve construction of the Project.

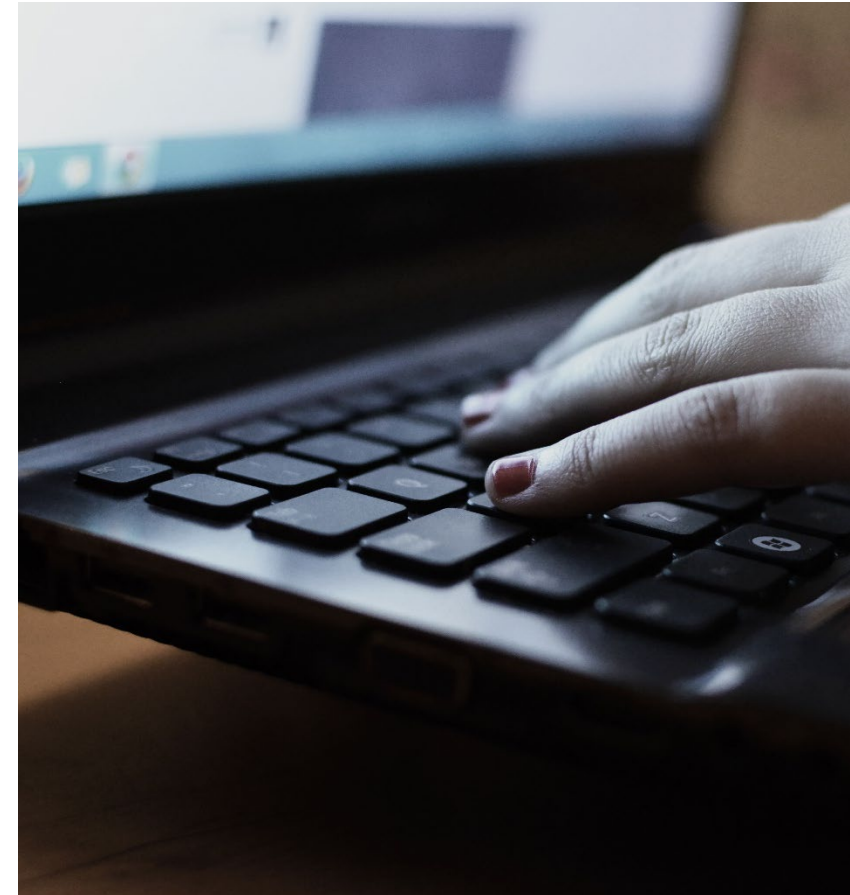


Eganville Community Expansion Project Virtual Open House



Consultation and Engagement

- Consultation and engagement are key components of the Environmental Report.
- At the outset of the Project, Enbridge Gas submits a Project Description to the Ministry of Energy; upon review, the Ministry of Energy determines potential impacts on aboriginal or treaty rights and identify Indigenous communities that Enbridge Gas must consult with during the entirety of the Project.
- The consultation and engagement program helps identify and address Indigenous community and stakeholder concerns and issues, provides information about the Project to the stakeholders, and allow for participation in the Project review and development process.
- Input will be used to help finalize the pipeline route and mitigation plans for the project.
- Once the LTC application is made to the OEB, any party with an interest in the Project, including members of the public, can participate in the process.



Eganville Community Expansion Project Virtual Open House

Route Selection Process

- Pipeline routing constraints include natural environmental features, slope, topography, and socio-economic features and landscapes. Opportunities include the ability to follow existing linear infrastructure such as road right-of-ways (ROWs).
- The proposed Preliminary Preferred and Alternative Routes follow existing linear infrastructure such as existing municipal road ROWs and avoid, to the extent possible, existing environmental and socio-economic features.

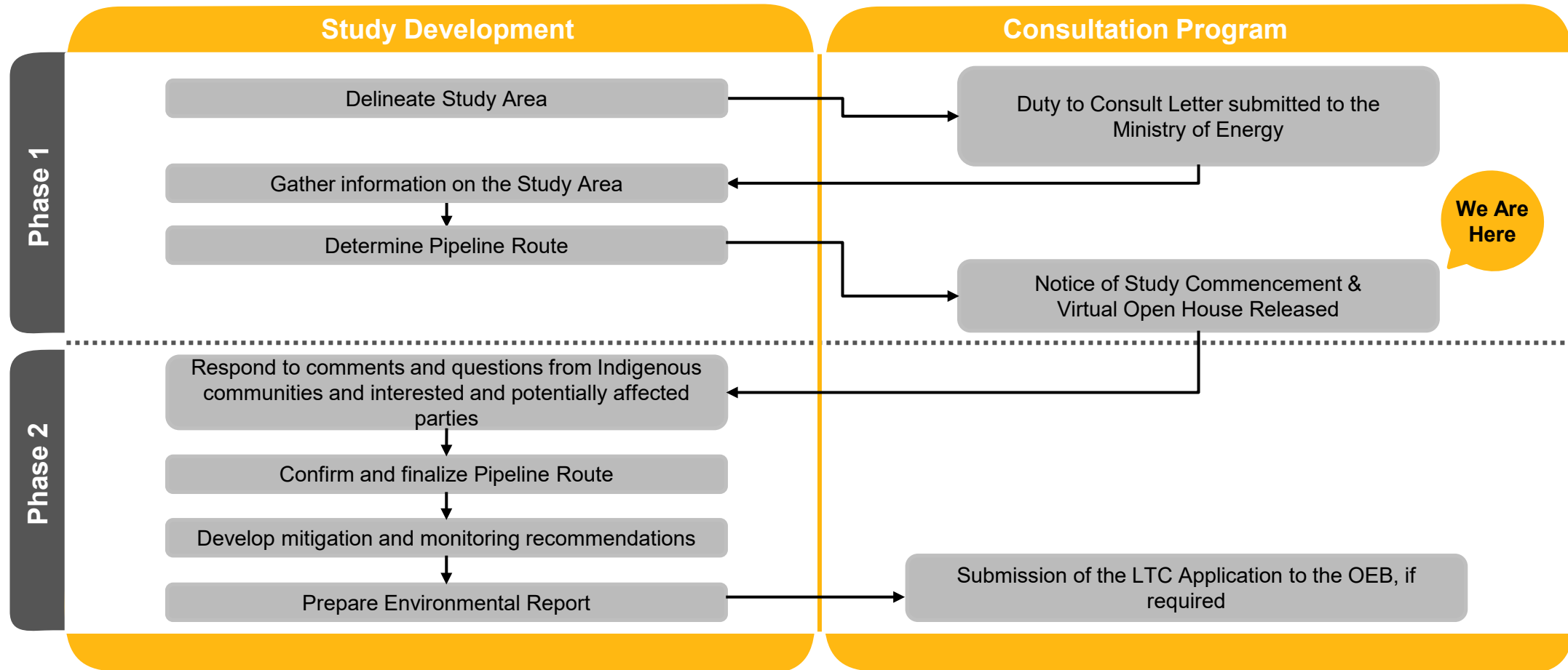
An interactive map that shows the entire proposed Route and the alternative segments can be accessed at: www.solutions.ca/EganvilleEA



Eganville Community Expansion Project Virtual Open House



Environmental Study Process



Eganville Community Expansion Project Virtual Open House



Environment, Health and Safety Policy

Our commitment

- Enbridge Gas is committed to protecting the health and safety of all individuals affected by our activities.
- Enbridge Gas will provide a safe and healthy working environment and will not compromise the health and safety of any individual.
- Our goal is to have no incidents and mitigate impacts on the environment by working with our stakeholders, peers, and others to promote responsible environmental practices and continuous improvement.
- Enbridge Gas is committed to environmental protection and stewardship, and we recognize that pollution prevention, biodiversity, and resource conservation are key to a sustainable environment.
- All employees are responsible and accountable for contributing to a safe working environment, for fostering safe working attitudes, and for operating in an environmentally responsible manner.



Eganville Community Expansion Project

Virtual Open House



Access and Land Requirements

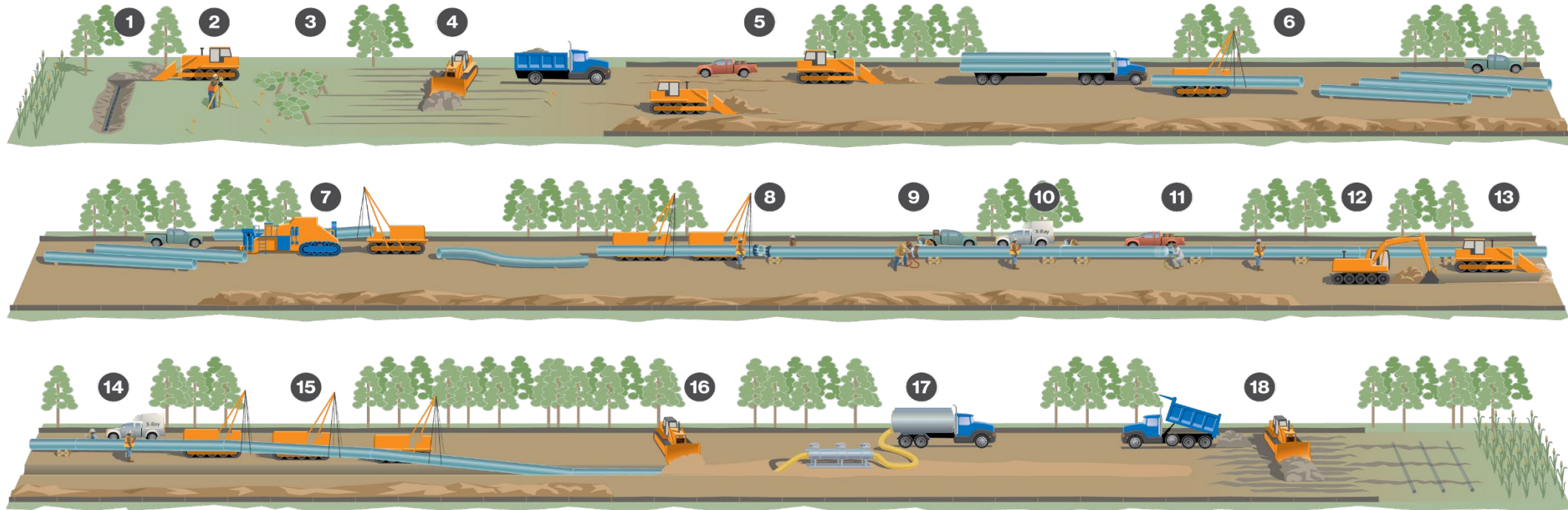
- While the majority of the pipeline route will be constructed within existing road allowances, some circumstances requiring access agreements, permanent easement or temporary working space and laydown areas during construction could result in the need for additional land outside of road allowances, the latter of which is necessary to facilitate the movement and storage of equipment necessary for construction. Enbridge Gas will work with regulators and landowners to identify and secure appropriate working space and easements as required
- Enbridge Gas has a comprehensive Landowner Relations Program that uses a dedicated Lands Advisor who would:
 - Provide direct contact & liaison between landowners and Enbridge Gas.
 - Be available to the landowner during the length of the Project and throughout construction activities.
 - Address the concerns and questions of the landowner.
 - Act as a singular point of contact for all landowners.
 - Address any landowner questions and any legal matters relating to temporary use of property, access agreements, permanent easements, and impacts or remedy to property.



Eganville Community Expansion Project Virtual Open House



Constructing an Enbridge Gas Pipeline



- 1. Pre-construction tiling
- 2. Surveying and staking
- 3. Clearing

- 4. Right-of-way topsoil stripping
- 5. Front-end grading
- 6. Stringing pipe

- 7. Field bending pipe
- 8. Lining-up pipe
- 9. Welding process

- 10. X-ray or ultrasonic inspection, weld repair
- 11. Field coating
- 12. Digging the trench

- 13. Padding trench bottom
- 14. Final inspection and coating repair
- 15. Lowering pipe

- 16. Backfilling
- 17. Hydrostatic testing
- 18. Site restoration and post-construction tiling



Eganville Community Expansion Project Virtual Open House



Socio-economic Features

The Project will mainly be constructed in existing road allowances. As a result of construction, private businesses, agricultural operations, residential land and cottages along the pipeline route may be impacted.

Potential Effects

- Temporary increases in noise, dust, and air emissions.
- Increased construction traffic volumes.
- Temporary impairment of the use and enjoyment of residential and/or cottage property.
- Vegetation clearing along the pipeline easement.

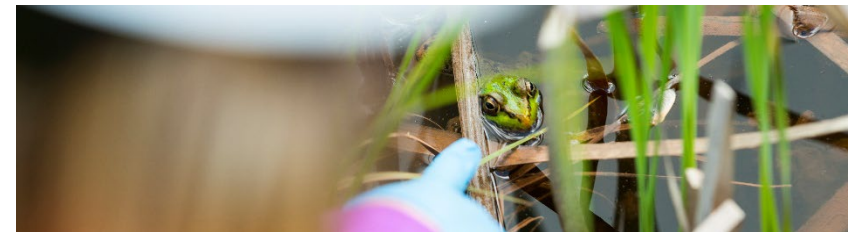
Example Mitigation Measures

- Provide access across the construction area.
- Restrict construction to daylight hours and adhere to applicable noise by-laws.
- Develop and implement a Traffic Control Plan.
- Place fencing at appropriate locations for safety.
- Implement a water well monitoring program.
- Making contact information for a designated Enbridge Gas representative available prior to and throughout construction.
- Dust control measures.
- Re-vegetation of cleared areas (seeding/planting).



Eganville Community Expansion Project

Virtual Open House



Aquatic Resources

Enbridge Gas understands the importance of protecting watercourses, wetlands, and associated wildlife during construction and therefore will implement recognized mitigation measures to reduce possible environmental effects.

Potential Effects

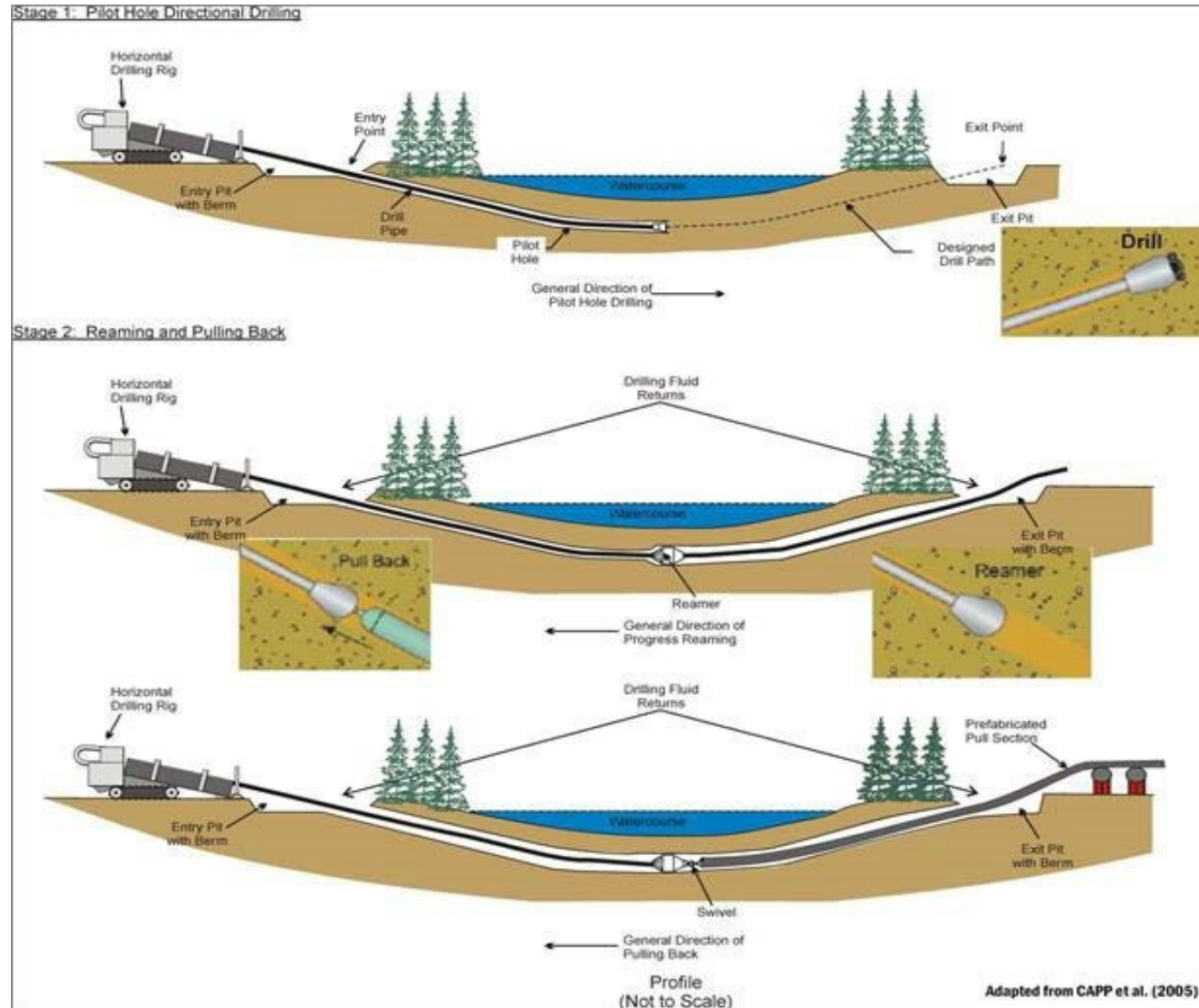
- Disruption and alteration to aquatic species and habitat and/or nuisance effects.
- Increased erosion, sedimentation, and turbidity resulting from removal of vegetation.

Example Mitigation Measures

- Install erosion and sediment control measures.
- Obtain all agency permits and approvals.
- Conform to fish timing window guidelines.
- Horizontal Directional Drill and/or trenchless drill within or near environmentally sensitive features (i.e., watercourses, wetlands etc.)
- For in-channel construction, protect aquatic species through methods such as flow diversion/dewatering, fish rescue planning etc., and manage sedimentation and turbidity.
- Restore and seed disturbed areas to establish habitat and reduce erosion, if necessary.
- Replant vegetation along waterways.



Horizontal Directional Drilling (HDD) Procedures



Eganville Community Expansion Project

Virtual Open House



Terrestrial Resources

During construction, natural environmental features such as wildlife habitat and vegetated/wooded areas will need to be crossed.

Potential Effects

- Damage or removal of vegetation and wildlife habitat in the construction area.
- Disturbance and/or mortality to local wildlife.

Example Mitigation Measures

- Conduct surveys (including Species at Risk surveys) in advance of construction to determine opportunities for wildlife habitat to exist.
- Complete tree removal outside of migratory bird windows (typically from April 1 – August 31), to the extent possible.
- Clearly mark the construction area to avoid accidental damage.
- Restore and seed disturbed areas to establish habitat and reduce erosion, if required.
- Secure any necessary permits and follow any conditions of approval.



Eganville Community Expansion Project

Virtual Open House



Cultural Heritage Resources

During construction, cultural heritage features such as archaeological finds, buildings, fences, and landscapes may be encountered. Detailed field surveys will be conducted by independent, third-party archaeologists and cultural heritage professionals, if required.

Potential Effects

- Damage or destruction of archaeological or historical resources.

Example Mitigation Measures

- Archaeological assessment of the construction footprint, with review and comment from the Ministry of Tourism, Culture and Sports (MTCS).
- Cultural heritage assessment (for built heritage features and cultural heritage landscapes) of the construction right-of-way, with review and comment from MTCS.
- Reporting of any previously unknown archaeological or historical resources uncovered, or suspected of being uncovered, during excavation.



Eganville Community Expansion Project Virtual Open House



Pipeline Design

The high-grade plastic and steel pipeline is designed to meet and/or exceed the regulations of the Canadian Standards Association (Z662 Oil and Gas Pipeline Systems) and the applicable regulations of the Technical Standards & Safety Association (TSSA).

Pipeline Safety and Integrity

We take many steps to ensure safe, reliable operation of our network of natural gas pipelines, such as:

- Design, construct, and test our pipelines to meet or exceed requirements set by industry standards and regulatory authorities,
- Continuously monitor the entire network, and
- Perform regular field surveys to detect leaks and confirm corrosion prevention methods are working as intended.

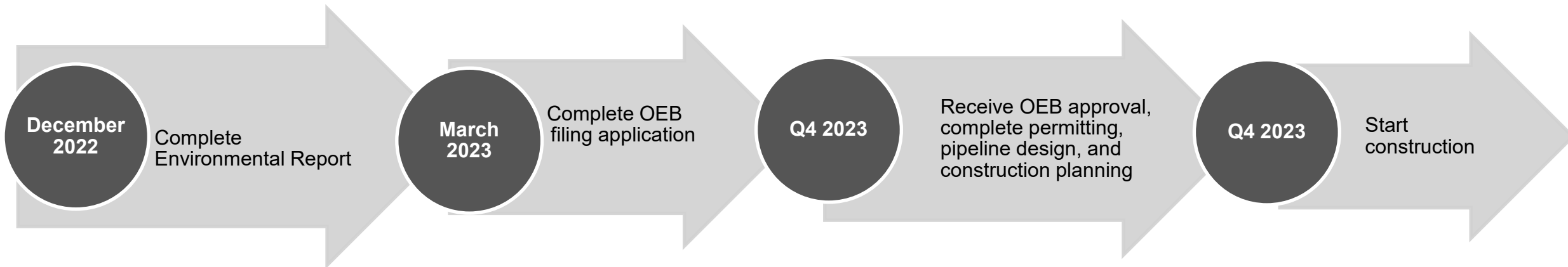


Eganville Community Expansion Project Virtual Open House



Next Steps

After this Virtual Open House, we intend to pursue the following schedule of activities:



Eganville Community Expansion Project Virtual Open House



Thank-you!

On behalf of the Project team, thank-you for listening to the Virtual Open House presentation. Please complete the Questionnaire, located in the Resources Tab. Please complete the Questionnaire by October 26, 2022 for your comments to be considered as part of the Environmental Report.

Laura Hill

Environmental Scientist
Stantec Consulting Ltd.
300 - 1331 Clyde Avenue
Ottawa ON K2C 3G4
Phone: 613-784-2256
Email: EganvilleEA@stantec.com

George Tatolis

Environmental Permitting Advisor
Lands, Permitting & Environment
ENBRIDGE
500 Consumers Road
North York ON M2J 1P8
Email: EganvilleEA@stantec.com

For more information about the proposed project, please visit our project website at: <https://www.Enbridgegas.com/EganvilleProject>

