

# Windsor Pipeline Replacement Project Information Session



## Welcome

Please view the display boards, speak to members of Enbridge Gas Inc. (Enbridge Gas) and/or Stantec Consulting Ltd. (Stantec), and complete a questionnaire providing your feedback.

Sign up at the front desk to have your attendance recorded as part of the environmental study and to receive future project updates. (Note: As of Jan. 1, 2019, Union Gas and Enbridge Gas Distribution have amalgamated into one utility with the legal name Enbridge Gas Inc.)

## Our commitment

Enbridge Gas is committed to involving community members in this proposed project. We are dedicated to providing you with up-to-date information in an open, honest and respectful manner and will carefully consider your input.

Enbridge Gas provides safe and reliable delivery of natural gas to more than 3.5 million residential, commercial, and industrial customers across Ontario. Enbridge Gas is committed to environmental stewardship and conducts all of its operations in an environmentally responsible manner.





# Windsor Pipeline Replacement Project Information Session

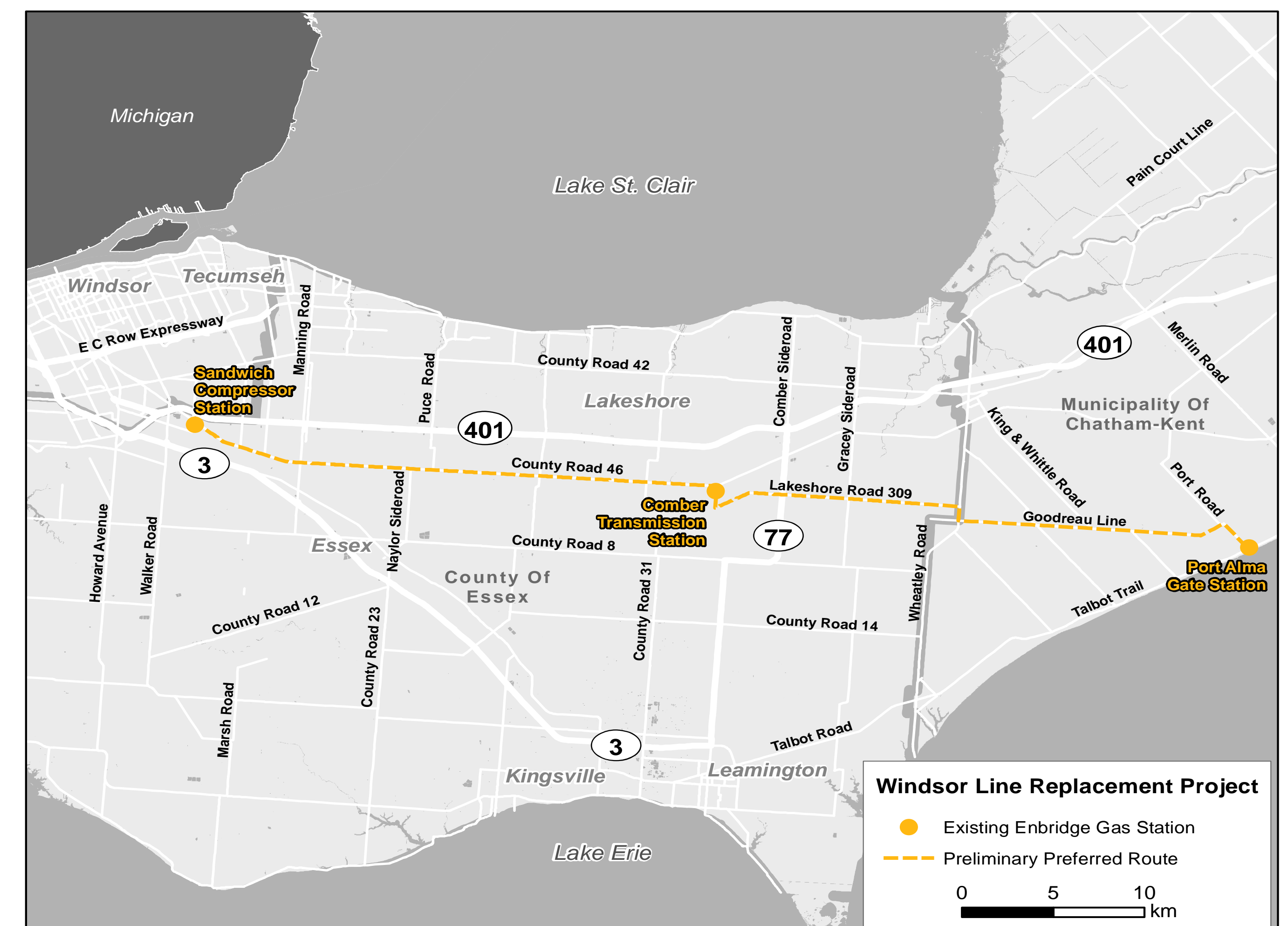


## Project overview

The proposed project involves replacing approximately 60 km of the existing Windsor natural gas pipeline, an 8 to 10-inch diameter pipeline, with a new 6-inch diameter pipeline to be constructed in the vicinity of the existing pipeline.

The proposed project will occur between the existing Enbridge Gas Sandwich Compressor Station (located in the Town of Tecumseh) and the existing Enbridge Gas Port Alma Transmission Station (located in the Municipality of Chatham-Kent).

If approved by the Ontario Energy Board (OEB), construction of the proposed pipeline project is planned to begin as early as spring/summer 2020.





# Windsor Pipeline Replacement Project Information Session



Why is Enbridge Gas undertaking this project?

Enbridge Gas is undertaking the proposed project as part of our continual pipeline monitoring and integrity program.





# Windsor Pipeline Replacement Project Information Session



## Environmental study process

The environmental study and subsequent Environmental Report for the project will be completed as per the OEB's *"Environmental Guidelines for the Location, Construction and Operation of Hydrocarbon Pipelines and Facilities in Ontario (2016)."*

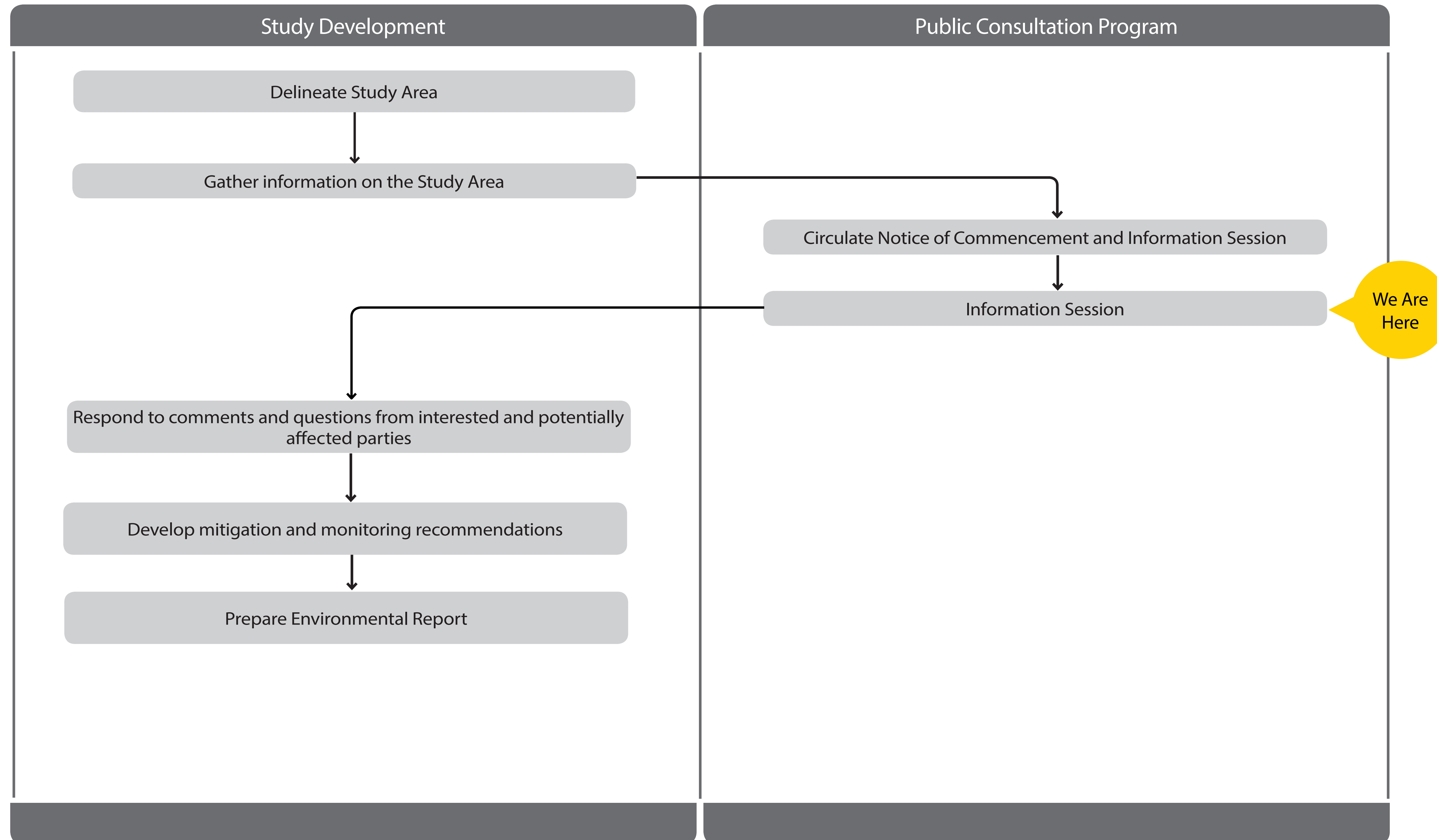
The study will:

- Undertake consultation to understand the views of interested and potentially affected parties.
- Consult with Indigenous Communities to understand interests and potential impacts.
- Be conducted during the earliest phase of the project.
- Identify potential impacts of the project.
- Develop environmental mitigation and protective measures to avoid or minimize potential impacts.
- Develop an appropriate environmental inspection, monitoring and follow-up program.





# Windsor Pipeline Replacement Project Information Session





# Windsor Pipeline Replacement Project Information Session



## Ontario Energy Board (OEB) review and approval process

The OEB is the body that regulates the natural gas industry in Ontario, in the public interest.

Enbridge Gas plans to submit an application for this project to the OEB. This application will include comprehensive information on the project including:

- The need for the project.
- Facility alternatives.
- Project costs and economics.
- Pipeline design and construction.

- Environmental mitigation measures.
- Land requirements.
- Consultation with Indigenous Communities.

The OEB will then hold a public hearing to review the project.

If after this review the OEB determines that the project is in the public interest it will approve construction of the project.

Additional information about the OEB process can be found on the project newsletter and at: [www.ontarioenergyboard.ca](http://www.ontarioenergyboard.ca)





# Windsor Pipeline Replacement Project Information Session



## Preliminary preferred alternative

Following a detailed review, Enbridge Gas determined the optimal approach was to replace the existing 8 to 10-inch diameter pipeline with a new 6-inch diameter pipeline.

The benefits of replacing the existing 8 to 10-inch diameter pipeline in a new alignment within the existing road allowance include:

- Maintaining gas service to existing customers throughout construction.
- Less disturbance to private lands related to pipeline maintenance.
- Improved safety for both the public and workers during construction.
- Minimizing environmental impacts by:
  - Reducing the footprint by remaining primarily within the existing road allowances.
  - Reducing impacts by minimizing disturbance to adjacent natural features and agricultural land.





# Windsor Pipeline Replacement Project Information Session



## Access and land requirements

Representatives from Enbridge Gas will meet with directly affected landowners along the pipeline route to discuss land rights which are necessary for the removal of the existing pipeline and construction of the new pipeline.

The compensation offered for both the construction of the new pipeline and removal of the existing pipeline where applicable will include a component for land rights, disturbance and a payment for crop loss.



# Windsor Pipeline Replacement Project Information Session



## Pipeline removal and abandonment

Pipeline removal and abandonment will be completed in accordance with Canadian Standards Association (CSA) Z662 Standards.

Enbridge Gas intends to remove the existing pipeline from private lands, where practicable. Where removal is not practicable, the existing pipe will be abandoned in place. Determination between pipeline removal and abandonment will consider the following:

- Landowner preference.
- Road crossings.
- Stream crossings.
- Depth of cover.
- Environmental considerations.
- Landscaping, driveways, etc.





# Windsor Pipeline Replacement Project Information Session



## Your Enbridge Gas system connection and this project

This project will see an existing pipeline decommissioned and a new pipeline installed. Decommissioning will be completed in accordance with CSA Z662 Standards.

Currently there are approximately 450 properties along the proposed project route that are directly connected to the existing pipeline. If you are one of these properties, representatives from Enbridge Gas will work with you

to ensure a smooth transition of your service to the new pipeline, which will involve a temporary gas service outage and subsequent appliance re-light.

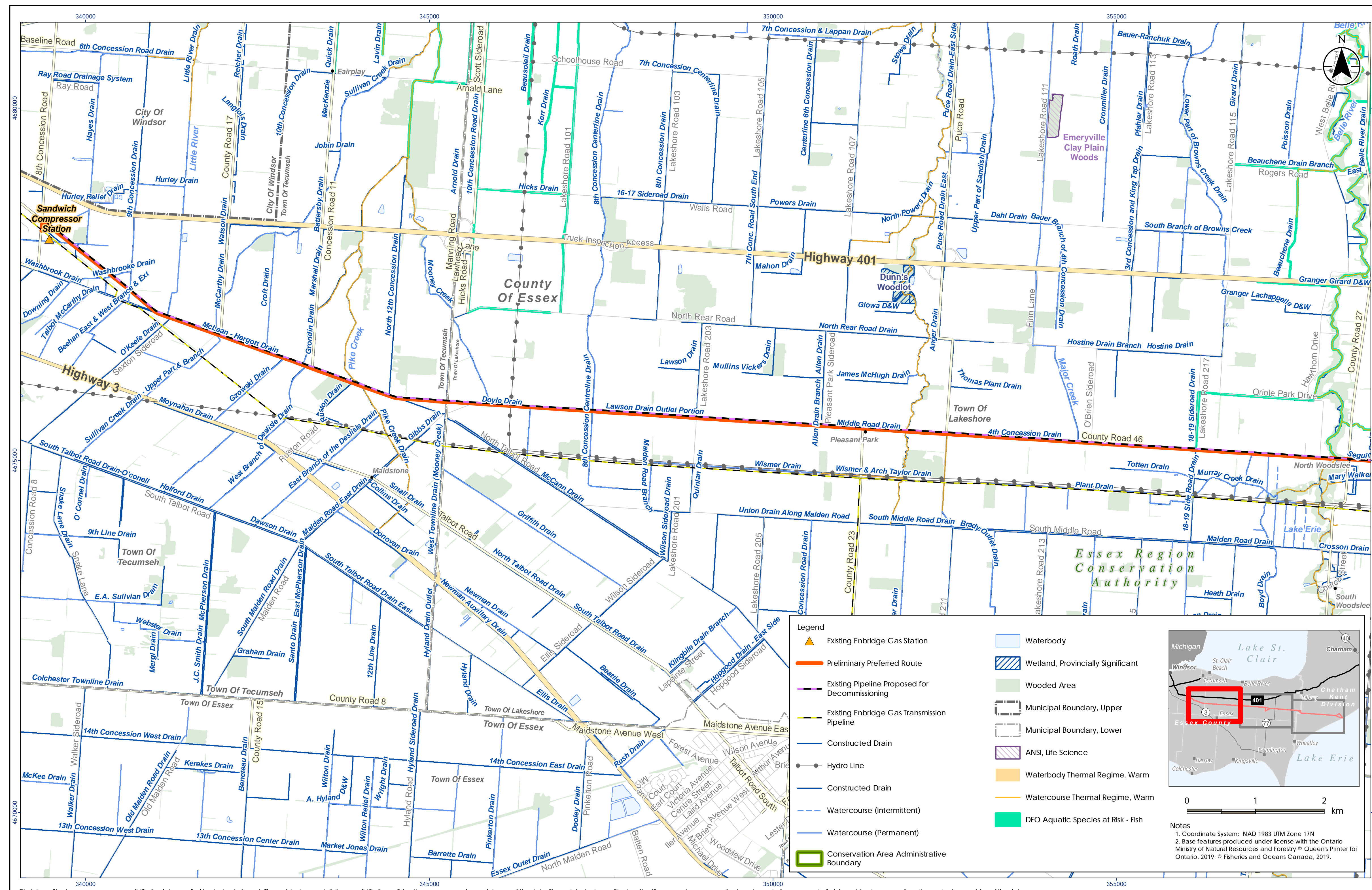
Other property impacts during construction, such as the need to cross driveways, will be managed with you to ensure you maintain access to your property.



# Windsor Pipeline Replacement Project Information Session



## Existing Drain features along the preliminary preferred route



Disclaimer: Stantec assumes no responsibility for data supplied in electronic format. The recipient accepts full responsibility for verifying the accuracy and completeness of the data. The recipient releases Stantec, its officers, employees, consultants and agents, from any and all claims arising in any way from the content or provision of the data.

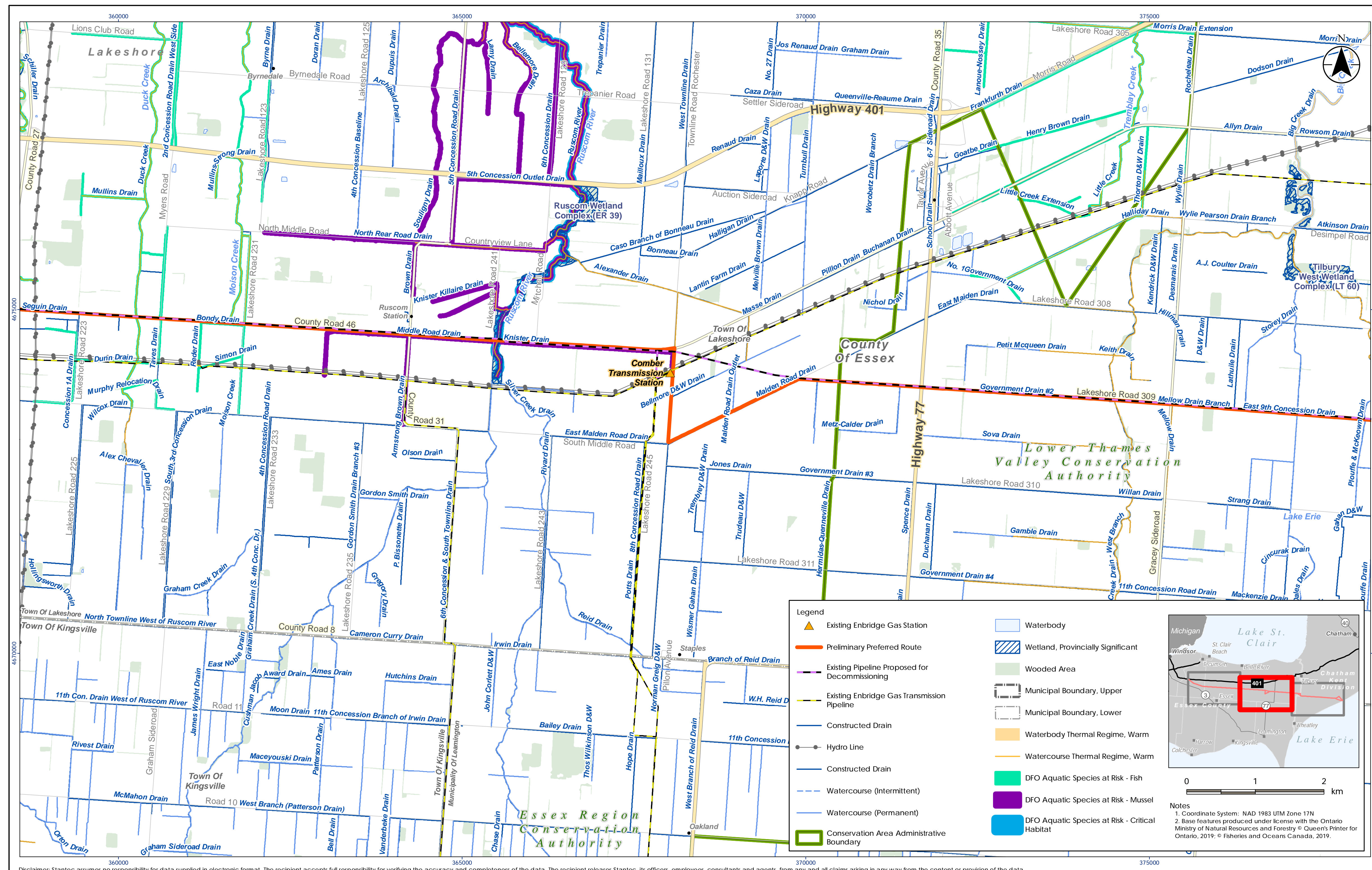




# Windsor Pipeline Replacement Project Information Session



## Existing features along the preliminary preferred route



Disclaimer: Stantec assumes no responsibility for data supplied in electronic format. The recipient accepts full responsibility for verifying the accuracy and completeness of the data. The recipient releases Stantec, its officers, employees, consultants and agents, from any and all claims arising in any way from the content or provision of the data.

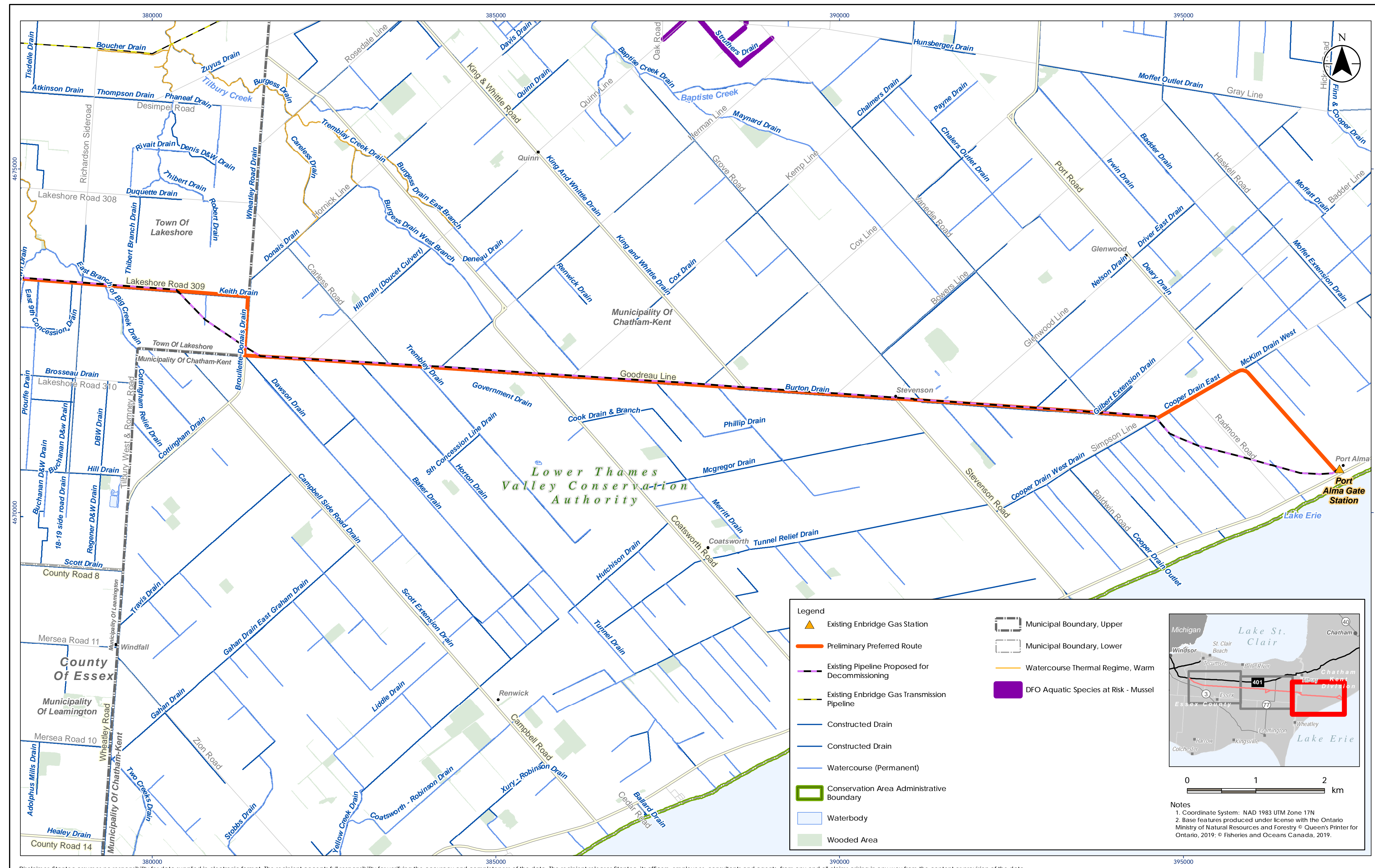




# Windsor Pipeline Replacement Project Information Session



## Existing features along the preliminary preferred route



Disclaimer: Stantec assumes no responsibility for data supplied in electronic format. The recipient accepts full responsibility for verifying the accuracy and completeness of the data. The recipient releases Stantec, its officers, employees, consultants and agents, from any and all claims arising in any way from the content or provision of the data.





# Windsor Pipeline Replacement Project Information Session



## Agricultural land

The preliminary preferred route is primarily in existing road allowances; however, agricultural lands adjacent to the road right-of-way may be impacted along the route to facilitate the construction process.

Enbridge Gas has established and tested measures to preserve the integrity of agricultural lands throughout the construction phase:

- Enbridge Gas will implement a wet soil shutdown protocol on agricultural lands to minimize soil structure damage.
- If work occurs on agricultural lands, Enbridge Gas will implement appropriate cleanup and restoration.

- Any agricultural drainage and tiling systems impacted by construction will be repaired.

Tile will be temporarily re-routed where required to ensure proper drainage during construction.

Damage and severed drains will be repaired following construction. After repair and prior to backfilling, landowners will be invited to inspect and approve the repair. Any on-going concerns with tile repair will be addressed by Enbridge Gas.



# Windsor Pipeline Replacement Project Information Session



## Socio-economic features

The preliminary preferred route is primarily in existing road allowances.

### Potential effects

- Temporary increases in noise, dust and air emissions.
- Increased construction traffic volumes.
- Temporary impairment of the use and enjoyment of property.
- Vegetation clearing along the pipeline easement (if needed).
- Temporary traffic restrictions and lane closures.
- Coordination, inspection of natural gas service to customers during the tie-over from the existing Windsor Pipeline to the new replacement.

### Example mitigation measures

- Provide access across the construction area.
- Restrict construction to daylight hours, and adhere to applicable noise by-laws when possible.
- Develop and implement a Traffic Control Plan.
- Place fencing at appropriate locations for safety.
- Implement a water well monitoring program.
- Providing you contact to an Enbridge Gas representative who is available prior to and throughout construction.
- Dust control measures.
- Re-vegetation of cleared areas (seeding/planting).



# Windsor Pipeline Replacement Project Information Session



## Aquatic resources

Enbridge Gas understands the importance of protecting wildlife during construction and therefore will implement recognized mitigation measures to minimize possible environmental effects.

The pipeline crosses 25 known watercourses.

### Potential effects

- Disruption and alteration to aquatic species and habitat and/or nuisance effects.
- Increased erosion, sedimentation, and turbidity resulting from removal of vegetation.

### Example mitigation measures

- Conduct surveys of waterbodies.
- Obtain all agency permits and approvals.

- Limit in-channel construction, where possible, and conform to fish timing window guidelines.
- For in-channel construction, protect aquatic species and manage sedimentation and turbidity.
- Restore and seed areas to establish habitat and reduce erosion.
- Replant riparian vegetation.





# Windsor Pipeline Replacement Project Information Session



## Cultural heritage resources

During the course of construction, cultural heritage features such as archaeological finds, buildings, fences and landscapes may be encountered. Detailed field surveys will be conducted by independent, third-party archaeologists and cultural heritage professionals.

### Potential effects

- Damage or destruction of archaeological, paleontological or historical resources.

### Example mitigation measures

- Archaeological assessment of the construction right-of-way, with review and comment from the Ministry of Tourism, Culture and Sport (MTCS).

- Cultural heritage assessment (for built heritage features and cultural heritage landscapes) of the construction right-of-way, with review and comment from MTCS.
- Reporting of any previously unknown archaeological, paleontological or historical resources uncovered, or suspected of being uncovered, during excavation.



# Windsor Pipeline Replacement Project Information Session



## Terrestrial resources

During the course of construction, natural heritage features such as wildlife habitat and vegetated areas will need to be crossed.

### Potential effects

- Damage or removal of vegetation and wildlife habitat adjacent to the construction area.
- Disturbance and/or mortality to local wildlife.

### Example mitigation measures

- Conduct surveys (including Species at Risk surveys) in advance of construction to determine opportunities for wildlife habitat to exist.

- Clearly mark the construction area to avoid accidental damage.
- Restore and seed areas to establish habitat and reduce erosion.
- Secure any necessary permits, and follow any conditions of approval.



# Windsor Pipeline Replacement Project Information Session

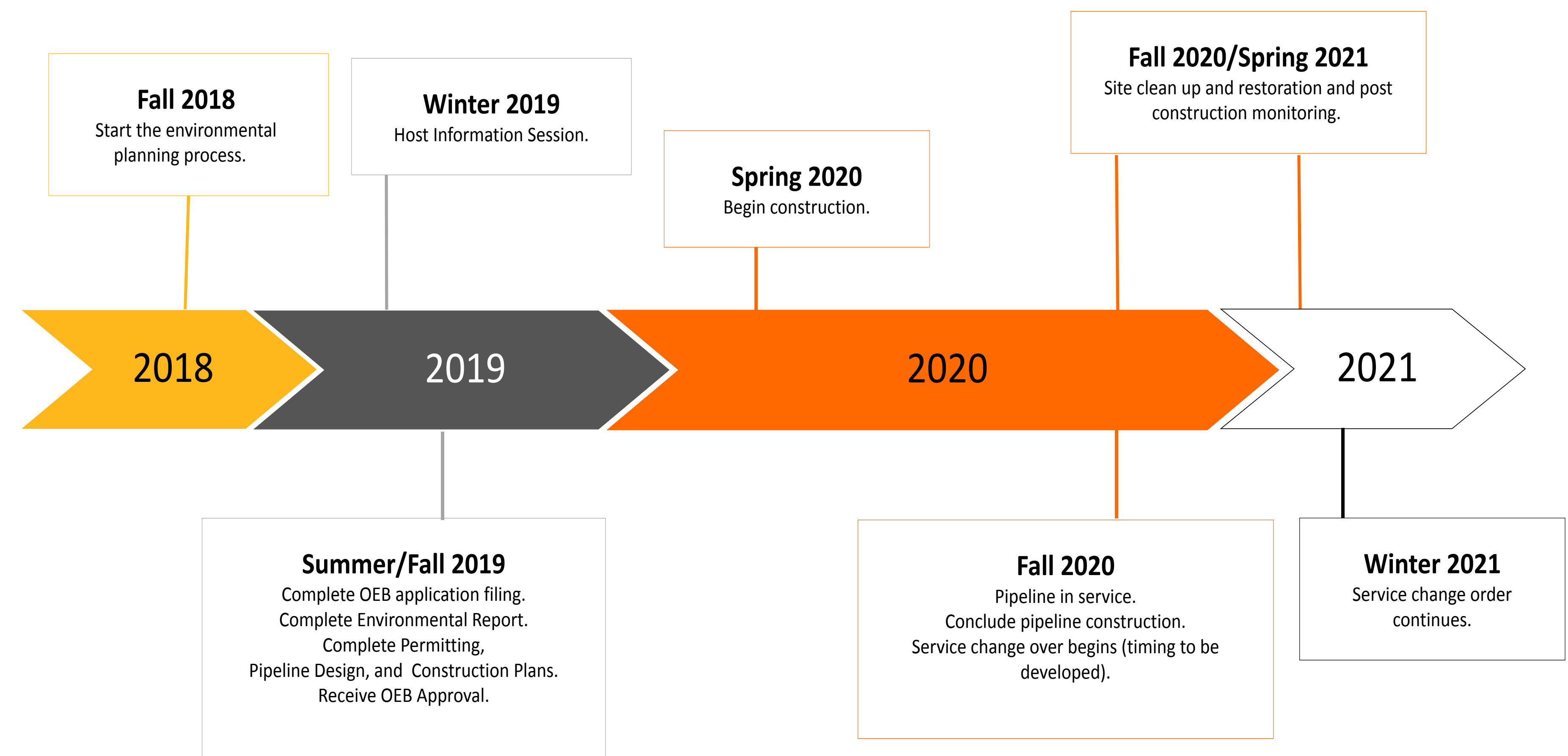


## Next steps

Serving hundreds of communities in Ontario, we consider ourselves strong community partners who believe in and are committed to public consultation.

During the planning stages for this project we have consulted and will continue to consult with local landowners, Indigenous communities, government agencies and other interested parties that could be impacted by the Project.

After this Information Session, we intend to pursue the following schedule of activities:





# Windsor Pipeline Replacement Project Information Session



## Thank you!

On behalf of the Project Team, thank you for attending this Information Session. We appreciate your involvement in the consultation process, and we would like to hear from you.

Please fill out the Exit Questionnaire. If you have any further comments or questions, please contact:

**Laura Hill, Project Manager**  
Stantec Consulting Ltd.  
Phone: 613-784-2286  
Email: [Laura.Hill@Stantec.com](mailto:Laura.Hill@Stantec.com)

**Enbridge Gas**  
Phone: 1-855-381-9138  
Email: [Projects@uniongas.com](mailto:Projects@uniongas.com)

Or visit our project webpage: [www.uniongas.com/projects/windsor-line-replacement](http://www.uniongas.com/projects/windsor-line-replacement)

