

# East Gwillimbury Community Expansion Project

Virtual Public Information Session

July 4, 2023 to July 17, 2023



---

# Welcome

- This Virtual Public Information Session will be live for two weeks from **Tuesday, July 4, 2023 to Monday, July 17, 2023**
- You can provide your input on the East Gwillimbury Community Expansion by completing the comment form available on the Virtual Public Information Session website at [www.EastGwillimburyEA.ca](http://www.EastGwillimburyEA.ca). Please submit your comments by **Friday, August 11, 2023**.
- After Monday, July 17, 2023, this presentation, accompanying video transcript, and the comment form will be available for download on the Enbridge Gas website at [www.enbridgegas.com/EastGwillimbury](http://www.enbridgegas.com/EastGwillimbury)
- An In-Person Public Information Session will be held on **Thursday, July 6, 2023** at the **Mount Albert Community Centre** in East Gwillimbury from **5 pm to 8 pm**. If you would like to meet members of the project team in-person to discuss the project, please stop by, we would love to see you!



# Enbridge Gas' Commitment

Enbridge Gas provides safe and reliable delivery of natural gas to more than 3.8 million residential, commercial, and industrial customers across Ontario.



Enbridge Gas will carefully consider all input.

It is committed to involving community members and will provide up-to-date information in an open, honest, and respectful manner.



Enbridge Gas is committed to environmental stewardship and conducts all of its operations in an environmentally responsible manner.



# Enbridge Gas' Environment, Health, and Safety Policies



Enbridge Gas is committed to protecting the health and safety of all individuals affected by its activities. Enbridge Gas will provide a safe and healthy working environment and will not compromise the health and safety of any individual.

Its goal is to have no workplace incidents and to mitigate its impacts on the environment by working with our stakeholders, peers, and others to promote responsible environmental practices and continuous improvement.

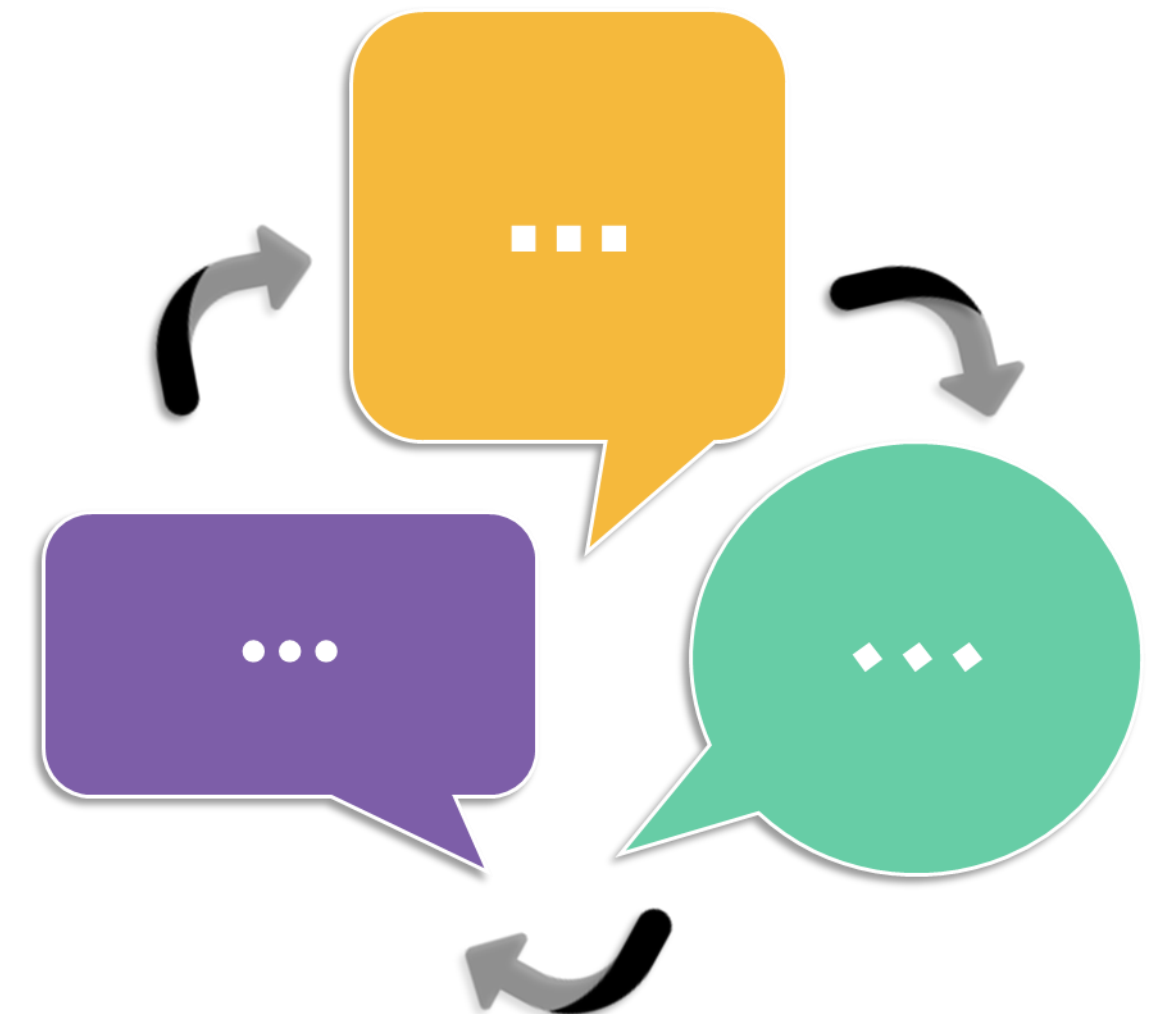


Enbridge Gas is committed to environmental protection and stewardship, and recognizes that pollution prevention, biodiversity, and resource conservation are key to a sustainable environment.

All employees are responsible and accountable for contributing to a safe working environment, for fostering safe working attitudes, and for operating in an environmentally responsible manner.

# Purpose of the Public Information Session

- Provide information on the Project purpose and illustrate the Preliminary Preferred Route
- Inform landowners, Indigenous communities, municipalities, stakeholders, and regulatory authorities about the Project and gather feedback about the assessment of the pipeline routes
- Give everyone the chance to participate in the Environmental Assessment process and the completion of associated Environmental Report, which will be included in the Leave to Construct Application to the Ontario Energy Board (OEB)
- Provide an opportunity to identify any unknown constraints and review draft plans to mitigate impacts to the local community and the environment
- Create a space for you to ask questions and/or provide comments to Enbridge Gas or Dillon Consulting



# Consultation Approach

We are committed to a comprehensive consultation process and want to hear from you about this Project.

Our consultation approach is:

- Inclusive: reaching out to all who may be interested or affected and providing opportunities to become informed and get involved.
- Transparent: providing access to information and clear explanations for decisions.
- Accountable: explaining how your input will be used in the decision-making process.
- An important part of the consultation process is working with Indigenous communities and stakeholders to identify and resolve potential project-related issues and concerns.



---

# Enbridge Indigenous Peoples Policy: Introduction

- Enbridge Gas follows the Enbridge Inc. (Enbridge) Indigenous Peoples Policy.
- Enbridge recognizes the diversity of Indigenous Peoples who live where the company works and operates. They understand from history the destructive impacts on the social and economic wellbeing of Indigenous Peoples. Enbridge recognizes and realizes the importance of reconciliation between Indigenous communities and the broader society. Positive relationships with Indigenous Peoples, based on mutual respect and focused on achieving common goals, will create positive outcomes from Indigenous communities.
- Enbridge commits to pursue sustainable relationships with Indigenous Nations and groups in proximity to where Enbridge conducts business. To achieve this, Enbridge will govern itself by the principles on the next slide.

# Enbridge Indigenous Peoples Policy: Principles

## Recognize

Enbridge **recognizes** the legal and constitutional rights of Indigenous Peoples, and the importance of the relationships between Indigenous Peoples and their traditional lands and resources. They commit to working with Indigenous communities in a manner that recognizes and respects those legal and constitutional rights and the traditional lands and resources to which they apply. Enbridge commits to ensuring that Enbridge projects and operations are carried out in an environmentally responsible manner.

## Understand

Enbridge **understands** the importance of the United Nations Declaration of the Rights of Indigenous Peoples in the context of existing Canadian law and the commitments that the government has made to protecting the rights of Indigenous Peoples.

## Engage

Enbridge **engages** in forthright and sincere consultation with Indigenous Peoples about their projects and operations through processes that seek to achieve early and meaningful engagement. Indigenous engagement helps define projects that may occur on lands traditionally occupied by Indigenous Peoples.

## Commit

Enbridge **commits** to working with Indigenous Peoples to achieve benefits for them resulting from Enbridge's projects and operations, including opportunities in training and education, employment, procurement, business development, and community development.

## Foster

Enbridge **fosters** an understanding of the history and culture of Indigenous Peoples among their employees and contractors, in order to create better relationships between Enbridge and Indigenous communities.



---

# Enbridge Indigenous Peoples Policy: Commitment

- The commitment is a shared responsibility involving Enbridge and its affiliates, employees and contractors. They will conduct business in a manner that reflects the principles listed on the previous slide. Enbridge will provide ongoing leadership and resources to effectively implement the principles, including the development of implementation strategies and specific action plans. Enbridge commits to periodically review this policy so that it remains relevant and respects Indigenous culture and varied traditions.

# Regulatory Framework

For the Project to proceed, approval from the OEB is required. The OEB requires that Enbridge Gas complete an environmental assessment and route selection study.



**ONTARIO  
ENERGY  
BOARD**

## Role of the Ontario Energy Board

- Reviews the Environmental Report (including details of consultation) as part of the application, known as the “Leave-to-Construct” Application.
- Once the Leave-to-Construct (LTC) Application is submitted to the OEB, any party with an interest in the Project may apply to the OEB to become intervenors or interested parties.
- Provides a public forum during the review of the LTC Application for people to participate in the decision-making process.
- Determines whether the proposed pipeline is in the public interest.

---

# Environmental Study Process

As part of the planning process, Enbridge Gas has retained Dillon Consulting Limited to undertake an Environmental Study for the Project. The Study will fulfill the requirements of the OEB's *Environmental Guidelines for the Location, Construction and Operation of Hydrocarbon Projects and Facilities in Ontario, 8th Edition (2023)*<sup>1</sup>.

The Study will be conducted during the earliest phase of the planning process. As part of the Study, Enbridge Gas and Dillon Consulting will:

- Undertake engagement to understand the views of interested and potentially affected parties
- Consult and engage with Indigenous communities to understand interests and potential impacts
- Identify potential impacts of the Project
- Develop environmental mitigation and protective measures to avoid or reduce potential impacts
- Develop an appropriate environmental inspection, monitoring, and follow-up program

<sup>1</sup> The OEB Released the 8th Edition guidelines in March 2023, after the initiation of the Project

# Environmental Study Process

## EA Process and Consultation Flow Chart





# Project Overview

Enbridge Gas has identified a Preliminary Preferred Route consisting of multiple small segments of plastic distribution pipeline, of which includes a combination of approximately 27 kilometers (km) and 10 km of 2-inch polyethylene (PE), and 4-inch PE, respectively, for a total of approximately 37 kilometers (km).



The Project will involve the construction of two stations:

- Near the intersection of Mount Albert Road and McCowan Road
- North of the intersection of Warden Avenue and Doane Road.

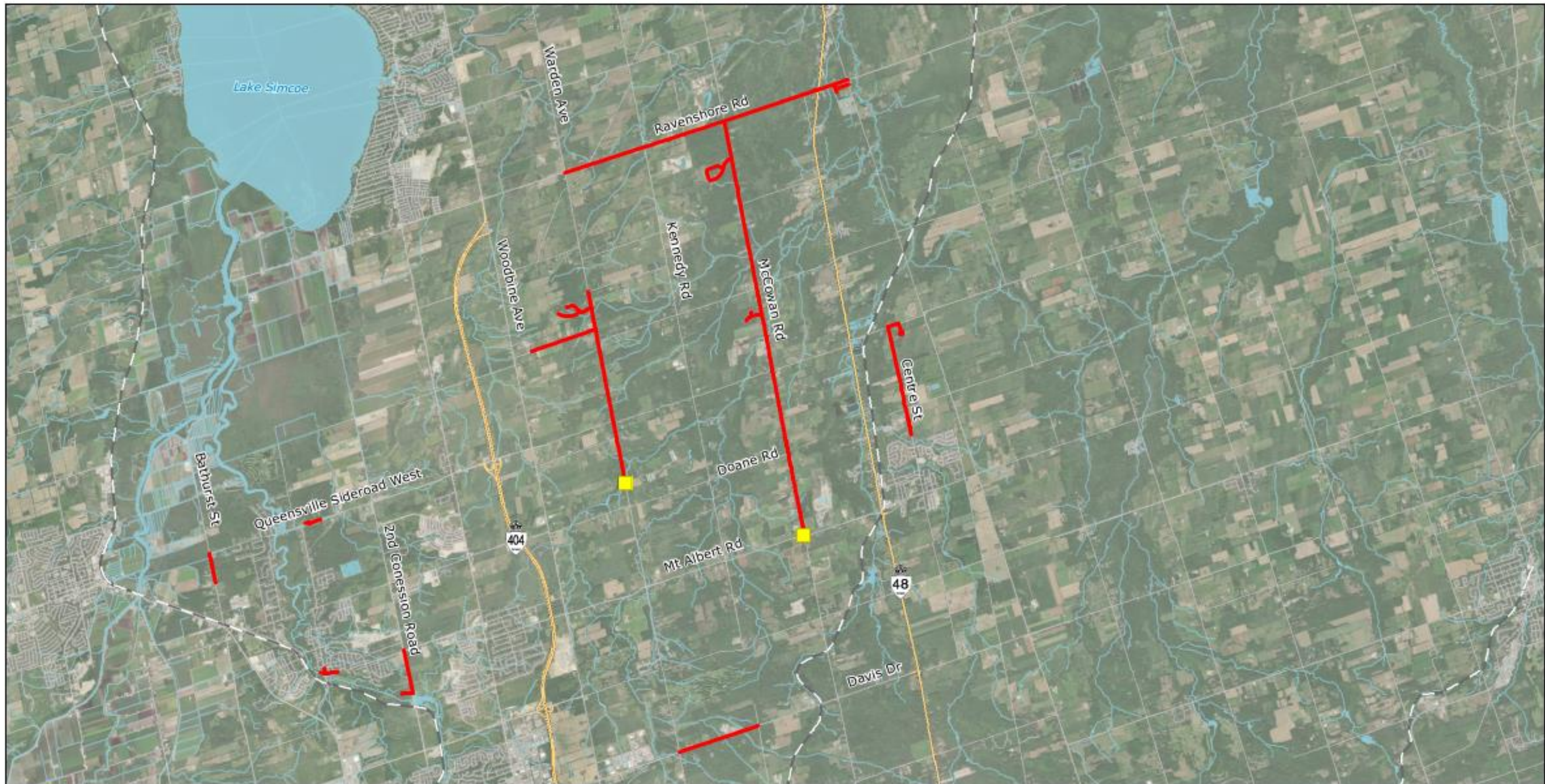


The Preliminary Preferred Route includes:

- Segments along Bathurst Street, Queensville Sideroad, Davis Drive, McCowan Road, Mount Albert Road at Yonge Street.
- Proposed segments in Hollands Landing along 2nd Concession Road south of Mount Albert Road.
- Proposed segments to tie into existing infrastructure at Woodbine and Holburn Road, Mount Albert Road and McCowan Road, Centre Street, McCowan Road and Ravenshoe Road.

The Project is planned to be constructed within the municipal road right-of-way with potential for temporary workspace.





**ENBRIDGE**  
**ENBRIDGE GAS INC.**  
 East Gwillimbury Community Expansion Project

- Proposed Station (Approximate)
- Preliminary Preferred Route (May, 2023)
- Expressway / Highway
- Road
- Ramp
- Railway
- Watercourse
- Waterbody

**PROJECT LOCATION**  
  
 FIGURE 1



MAP DRAWING INFORMATION:  
 DATA PROVIDED BY: MNR, ENBRIDGE, ESRI IMAGERY  
  
 MAP CREATED BY: DOR  
 MAP CHECKED BY: NT  
 MAP PROJECTION: NAD 1983 CSRS UTM Zone 17N

SCALE 1:90,000

0 1 2 4 km

PROJECT: 22-5034 STATUS: DRAFT DATE: 2023-06-09



# Natural Environment: Terrestrial and Aquatic Habitats

A preliminary field investigation along the Preliminary Preferred Route was completed to identify and assess existing natural features, including potential terrestrial and aquatic habitat, as well as potential Species at Risk habitat.

The results determined lands in the Study Area are primarily classified as a combination of 'natural' and 'cultural' community types.

Cultural communities most common within the Study Area include residential properties and active agricultural fields, such as annual row crops.

Natural communities encountered within the Study Area are diverse in habitat type, with the most common community types identified as woodlands, wetlands and meadow areas.

Wetlands (Unevaluated, Locally Significant and Provincially Significant), woodlands identified by the Ministry of Natural Resources and Forestry (MNR), watercourses and Areas of Natural and Scientific Interest (ANSI) were identified in the Project Study Area during initial background review





# Natural Environment: Potential Effects and Mitigation Measures

## Terrestrial Environment: Vegetation, Vegetation Communities, Wetlands, Wildlife and Wildlife Habitat

### Examples of Potential Effects

- Temporary loss or alteration of vegetation during construction.
- Temporary alteration of wildlife habitat and/or disruption of wildlife movement during construction.

### Examples of Mitigation Measures

- Minimize the width of the construction area to reduce the amount of vegetation affected.
- Conduct species specific surveys in advance of construction, if required.
- Complete vegetation removal outside the wildlife active window, where possible
- Secure necessary permits and follow conditions of approval
- Restore and seed disturbed areas to establish habitat and reduce erosion, where required
- Flag or fence off environmentally sensitive areas prior to construction.



# Natural Environment: Potential Effects and Mitigation Measures

## Aquatic Environment: Watercourses, Waterbodies, Fish and Fish Habitat

### Examples of Potential Effects

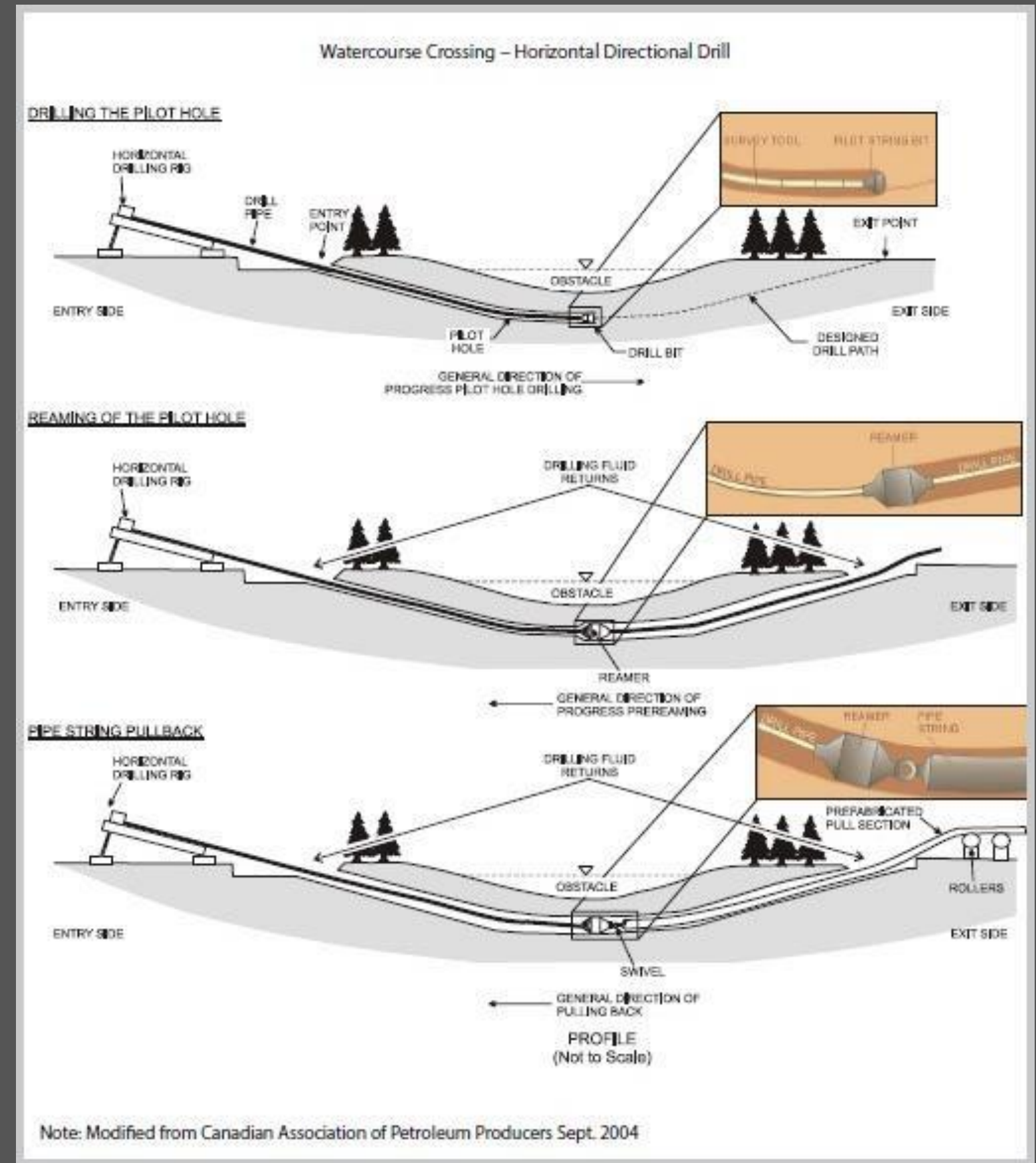
- Alteration of fish habitat or death/injury of fish during construction.
- Temporary reduction in surface water quality, fish habitat and alteration of waterflow during construction.

### Examples of Mitigation Measures

- Secure necessary permits and follow conditions of approval
- Employ trenchless construction methods where feasible and/or appropriate, including Horizontal Directional Drill (HDD)
- Establish appropriate watercourse crossing techniques (open cut, dam and pump, temporary diversion channels) during open trench construction
- Maintain the quality and quantity of stream flow during in water work
- Install and maintain erosion and sediment control measures
- Restore banks and riparian areas to original condition if disturbance occurs

# Typical Process for Horizontal Directional Drilling (HDD)

HDD is a construction technique whereby a tunnel is drilled under a designated area and a pipeline is pulled through the drilled underground tunnel. HDD construction is considered suitable for site-specific situations because it minimizes the impact on the area above the drill. Although land around the drill entry and exit locations is temporarily disturbed during HDD activities, it will be restored to its pre-drill state following construction.



# Natural Environment: Species at Risk (SAR), Potential Effects and Mitigation

Based on an initial review of existing records, 14 SAR have the potential to occur within the Project Study Area. Consideration of potential SAR/SAR habitat that may be present in the Study Area was determined based on the general habitat requirements of the species and the preliminary field investigations.



Red-header  
Woodpecker



Blanding's  
Turtle

## Examples of Potential Effects

- Temporary alteration of SAR habitat and/or disruption of SAR movement during construction.

## Examples of Mitigation Measures

- Document wildlife and SAR encounters and notify appropriate regulatory authorities, where required.
- Provide SAR identification sheets to workers that outline habitat, identifying characteristics and mitigation measures.
- Consultation with the Ministry of Environment, Conservation and Parks (MECP) during detailed design (if appropriate) to determine potential permitting and/or approvals under the Endangered Species Act, 2007



# Socio-Economic Environment: Overview

- The Project is located in the Town of East Gwillimbury.
- The Project Study Area is a combination of rural, open space, residential, mixed use and commercial land use.
- Statistics Canada Census data indicates that, in 2021, the leading industries in East Gwillimbury were construction, health care and social assistance, educational services, and professional, scientific and technical services.





# Socio-Economic Environment: Potential Effects and Mitigation Measures

## Examples of Potential Effects

- Temporary increase in nuisance noise during construction.
- Temporary traffic disruptions during construction.
- Temporary increase in wastes during construction.

## Examples of Mitigation Measures

- Construction activities will be carried out in compliance with municipal noise by-laws with respect to noise and construction equipment usage. Applicable noise by-law exemptions will be sought if construction activities cannot be avoided on Statutory Holidays, Sundays or at night. (Note that typical construction days and times are Monday to Saturday, 7 am in the morning to 5 pm in the afternoon).
- Traffic access will be maintained, where possible, during construction. Good management and best practices will be implemented during construction to minimize traffic disruption. If required, temporary detour routes will be provided to reduce potential impacts to commuters.
- Solid waste will be collected and disposed of appropriately in accordance with applicable regulations at a licensed waste facility.

# Cultural Heritage Resources: Archaeology

- A Stage 1 Archaeological Assessment was conducted in January 2023.
- The Preliminary Preferred Route is located in the existing road allowance, and is considered extensively disturbed. The road allowance is considered low archaeological potential, and does not require further assessment.
- Areas immediately adjacent to the Preliminary Preferred Route are subject to a Stage 2 Archaeological Assessment. These areas are predominantly grassed, forested or agricultural fields and retain archaeological potential.

- Two previously registered archaeological sites with further Cultural Heritage Value or Interest (CHVI) are located within 50 m of the Preliminary Preferred Route.
- The Project Study Area contains three cemeteries: Christ Church Anglican Cemetery, the Mount Albert Cemetery and the Holborne-Glover Cemetery.



# Cultural Heritage Resources: Built Heritage and Cultural Heritage Landscapes

A Cultural Heritage Screening was conducted for the Project.

Properties of possible Cultural Heritage Value or Interest was identified along the Preliminary Preferred Route.

A Cultural Heritage Assessment Report (CHAR) will be completed once the Preferred Route is selected. The CHAR will further evaluate potential heritage resources and, if necessary, a preliminary Heritage Impact Assessment will be conducted.

The results of the Cultural Heritage Screening found the following, within 200 metres of the Preliminary Preferred Route:

- No federally designated heritage properties
- Multiple cemeteries and/or burying grounds present
- Listed heritage resources present
- Listed properties\* present

\*Listed under the Town of Gwillimbury's Register of Properties of Cultural Heritage Value or Interest.

# Cultural Heritage Resources: Potential Effects and Mitigation Measures

## Examples of Potential Effects

- Disturbance of previously undiscovered archaeological resources during construction
- Damage or destruction of archaeological resources.
- Damage and/or destruction of built heritage resources.

## Examples of Mitigation Measures

- Completion of further archaeological studies.
- Reporting of any previously unknown archaeological or historical resources uncovered, or suspected of being uncovered, during construction.
- The preparation of a CHAR to further evaluate resources and impacts.



# Pipeline Design, Construction and Safety

## Pipeline Design

- The proposed pipeline is designed to meet and/or exceed the regulations of the Canadian Standards Association (Z662 Oil and Gas Pipeline Systems) and the applicable regulations of the Technical Standards and Safety Authority (TSSA).

## Pipeline Construction



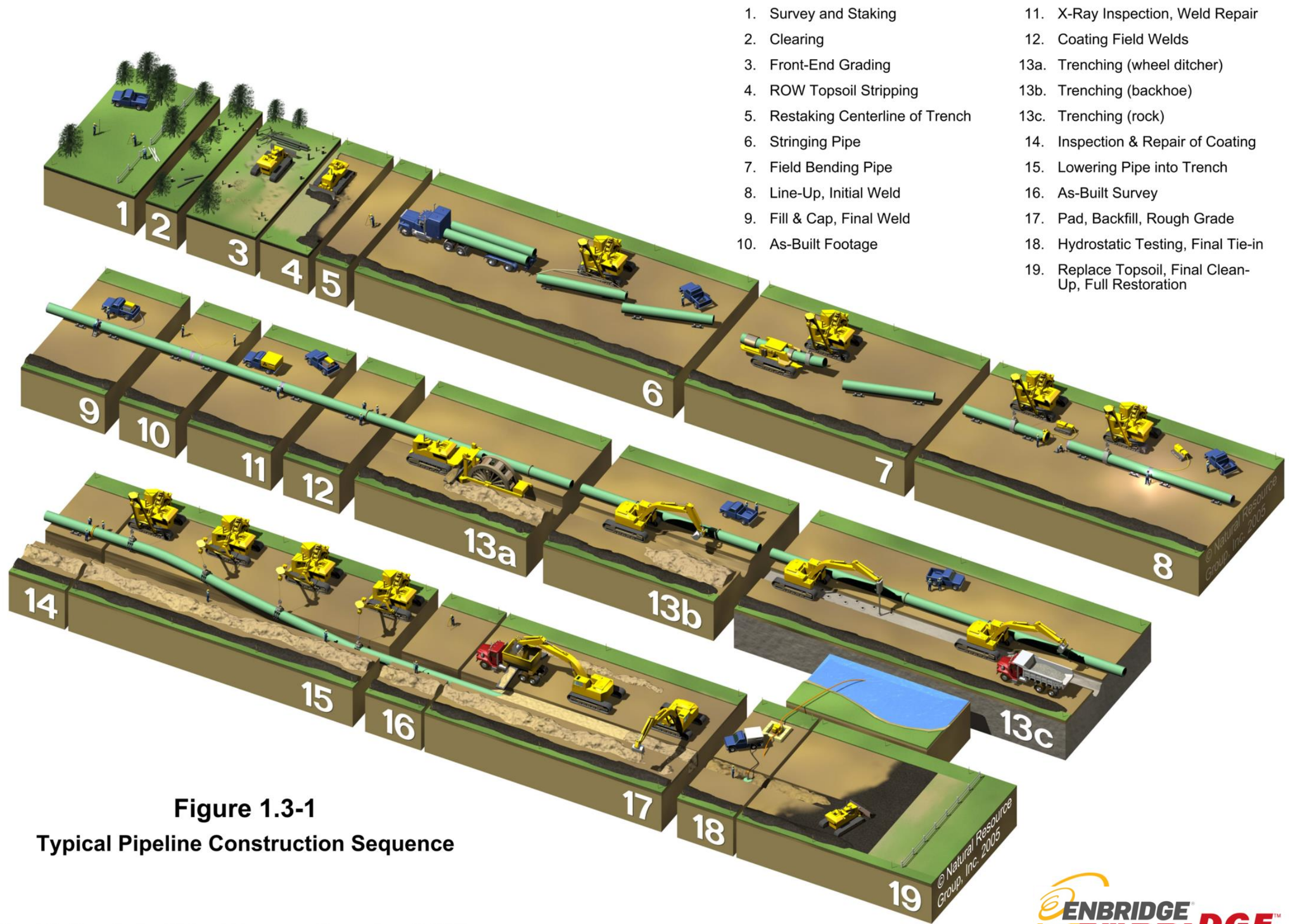
- The construction work is temporary and transitory: once the pipe is laid, the area will be restored to as close to pre-construction condition as possible.

## Pipeline Safety



Enbridge Gas takes many steps to safely and reliably operate their network of natural gas pipelines, such as:

- Designing, constructing, and testing their pipelines to meet or exceed requirements set by industry standards and regulatory authorities.
- Ensuring that any work is respectful of community activities, regulations and bylaws.
- Continuously monitoring their network.
- Performing field surveys to detect leaks and confirm that corrosion prevention methods are working as intended.



1. Survey and Staking
2. Clearing
3. Front-End Grading
4. ROW Topsoil Stripping
5. Restaking Centerline of Trench
6. Stringing Pipe
7. Field Bending Pipe
8. Line-Up, Initial Weld
9. Fill & Cap, Final Weld
10. As-Built Footage
11. X-Ray Inspection, Weld Repair
12. Coating Field Welds
- 13a. Trenching (wheel ditcher)
- 13b. Trenching (backhoe)
- 13c. Trenching (rock)
14. Inspection & Repair of Coating
15. Lowering Pipe into Trench
16. As-Built Survey
17. Pad, Backfill, Rough Grade
18. Hydrostatic Testing, Final Tie-in
19. Replace Topsoil, Final Clean-Up, Full Restoration

# Typical Pipeline Construction Sequence

**Figure 1.3-1**  
**Typical Pipeline Construction Sequence**





# Example of Pipeline Installation in Road Allowance



The photos on this slide show a typical pipeline construction sequence in a road right-of-way, from stringing (1), to lowering in (2,3), and site restoration (4).



# Mitigation and Monitoring



Enbridge Gas is committed to working with the community with respect to construction planning, mitigation, and post-construction monitoring. Post-construction monitoring will be conducted so that impacted areas are restored to as close to pre-construction conditions as possible.

Enbridge Gas recognizes that the construction of the pipeline may result in short-term impacts and they commit to applying mitigation measures to reduce these impacts and work with affected municipalities and landowners so that issues are resolved in a timely manner.



# Environmental Assessment Process and Project Schedule

Date	Activity
Fall 2022 - June 2023	Baseline Data Collection and Desktop Review
June 19, 2023	Notice of Study Commencement
July 4 to July 17, 2023	<b>Virtual Public Information Session ★ (We are here) ★</b>
July 6, 2023 (5 pm to 8 pm)	In-Person Public Information Session (Mount Albert Community Centre)
September, 2023	Environmental Report submitted to Ontario Pipeline Coordinating Committee for 42 day Review Period
Q4, 2023	Anticipated date for Leave-to-Construct Application submission to the OEB
Q2/Q3 2024	Tentative Construction Start Date (pending OEB approval)
Q2 2025	Potential Construction Completion Date

# Continuous Stakeholder Engagement

Enbridge Gas is committed to open dialogue throughout the environmental assessment and the OEB Leave-to-Construct Application process. Stakeholders will have the opportunity to remain engaged in the process after the environmental assessment is completed, through:

- Participation in the Ontario Energy Board hearing as an intervenor or interested party (details can be found at [www.oeb.ca](http://www.oeb.ca))
- Contacting Project team members (project contact information provided on next slide)
- Visiting the Enbridge Gas Project website at [www.enbridgegas.com/EastGwillimbury.ca](http://www.enbridgegas.com/EastGwillimbury.ca)



- We want to hear from you! Please complete the Project comment form on the Virtual Public Information Session website at [www.EastGwillimburyEA.ca](http://www.EastGwillimburyEA.ca).
- After Monday, July 17, 2023, this presentation, accompanying video transcript, and the comment form will be available for download on the Enbridge Gas website at [www.enbridgegas.com/EastGwillimbury](http://www.enbridgegas.com/EastGwillimbury)
- Please submit your feedback by **Wednesday, August 11, 2023** so it can be considered in the Environmental Report that will be submitted to the Ontario Energy Board.

**Project Contact Information:**

**Email:** [EastGwillimburyEA@dillon.ca](mailto:EastGwillimburyEA@dillon.ca)

**Phone:** 519-571-9833 ext. 3154

**Thank you for  
participating  
in our Virtual  
Public  
Information  
Session**