



Hamilton Light Rail Transit Pipeline Relocation Project

Virtual Information Session



Hamilton Light Rail Transit Pipeline Relocation Project Virtual Information Session



Welcome

- Press the next button to navigate to the next slide at any time.
- To return to the previous slide, press the previous button.
- You can mute the audio at any time by pressing the speaker icon.
- The presentation slides, as well as the audio script, are available for download (see the Resources tab in the top right corner).
- Questions and comments can be submitted using the questionnaire found in the Resources tab.
- If you would like to receive future project updates, please complete the “Contact Information” section of the questionnaire.

Hamilton Light Rail Transit Pipeline Relocation Project Virtual Information Session



Enbridge Gas' commitment

Enbridge Gas is dedicated to engaging with Indigenous communities, agencies, interest groups, and community members. They commit to providing up-to-date information in an open, honest, and respectful manner while carefully considering your input. With over 3.9 million residential, commercial, and industrial customers, Enbridge Gas is committed to delivering natural gas safely and reliably. Environmental stewardship is also a top priority for Enbridge Gas, and they conduct their operations in an environmentally responsible manner.



Hamilton Light Rail Transit Pipeline Relocation Project Virtual Information Session

Purpose of the information session

- Consult with Indigenous communities and engage with members of the public and regulatory authorities regarding the proposed pipeline route, potential impacts, and proposed mitigation.
- Provide an opportunity for these individuals and any affected landowners and the public to review the proposed project, and to ask any questions and/or provide comments to representatives from Enbridge Gas and Stantec.

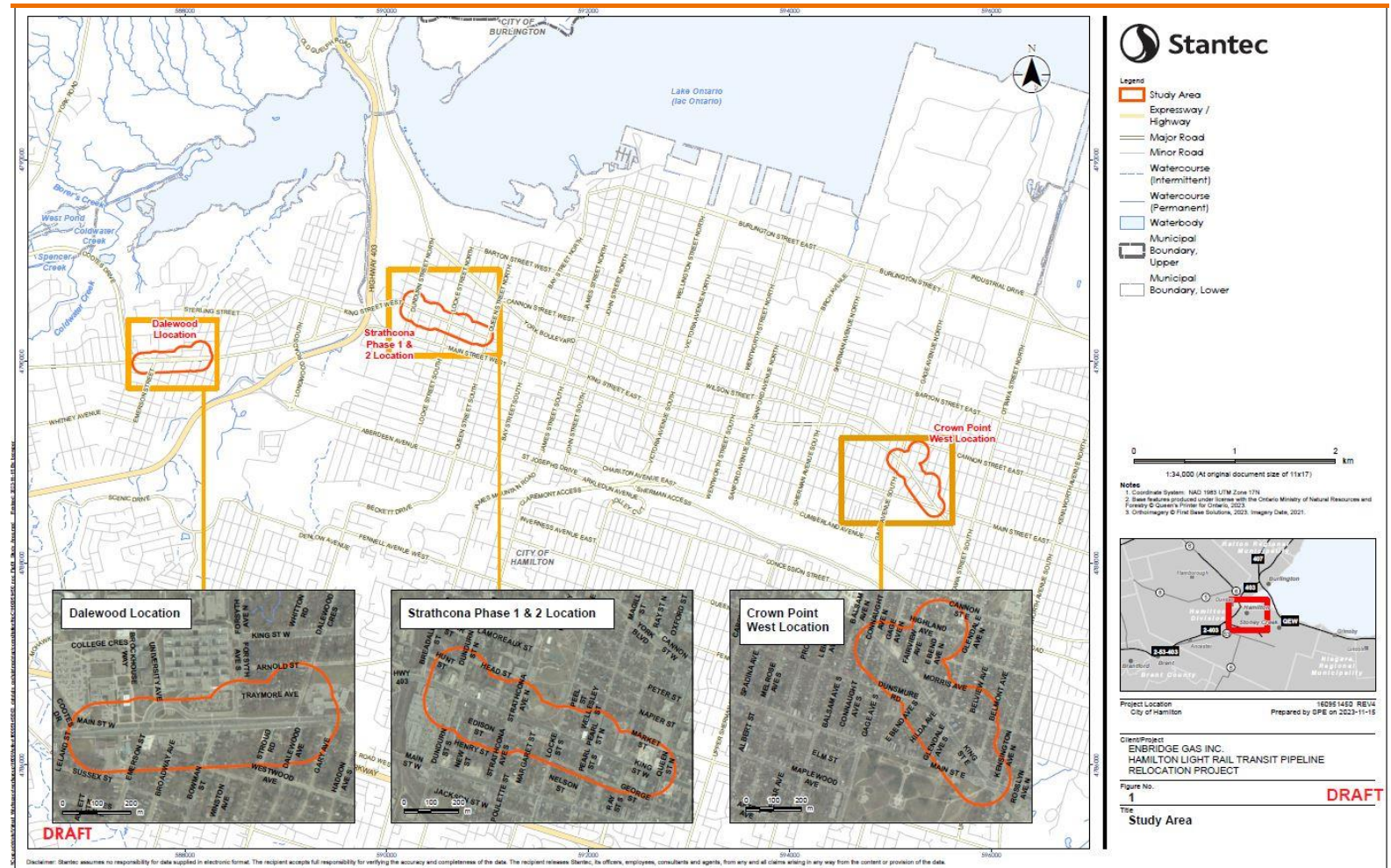


Hamilton Light Rail Transit Pipeline Relocation Project

Virtual Information Session

Project distribution system

- The Preferred Preliminary Route has been developed for the purpose of an assessment of potential environmental and socio-economic impacts.
- Due to the highly congested corridor, property constraints, and utility congestion, Enbridge Gas has identified the Preliminary Preferred Route as the most feasible alternative that resolves the conflict with the proposed transit infrastructure while minimizing the total length and cost of a gas main relocation in order to reinstate the network and maintain service to existing Enbridge Gas customers.
- Any other alternative would result in additional unnecessary lengths of pipe to be relocated, resulting in higher costs and additional environmental/socio-economic effects to achieve the same result. The pipeline will be installed within the municipal road right-of-way, where possible and may require easements, temporary working space, and lay-down areas during construction.
- This map does not represent the final project scope/design of the project.



Hamilton Light Rail Transit Pipeline Relocation Project

Virtual Information Session



Project Overview

The Hamilton Light Rail Transit Pipeline Relocation Project (The Project) consists of relocating an existing Enbridge Gas natural gas pipeline in the City of Hamilton to accommodate the construction of the proposed Metrolinx Hamilton Light Rail Transit Project while maintaining existing service to Enbridge Gas customers. The Project will take place at three locations: Crown Point West, Dalewood, and Strathcona Phase 1 and 2.

At the three locations, the project will involve the installation of approximately 2.5 kilometres (km) of polyethylene (plastic) and steel natural gas distribution pipeline, ranging from 1.25 to 8 inches in diameter, and the decommissioning of approximately 2.8 km of plastic and steel natural gas pipeline. The project will be located within the municipal road right-of-way and may require easements, temporary working space, and lay-down areas during construction.

Hamilton Light Rail Transit Pipeline Relocation Project

Virtual Information Session



Project Overview

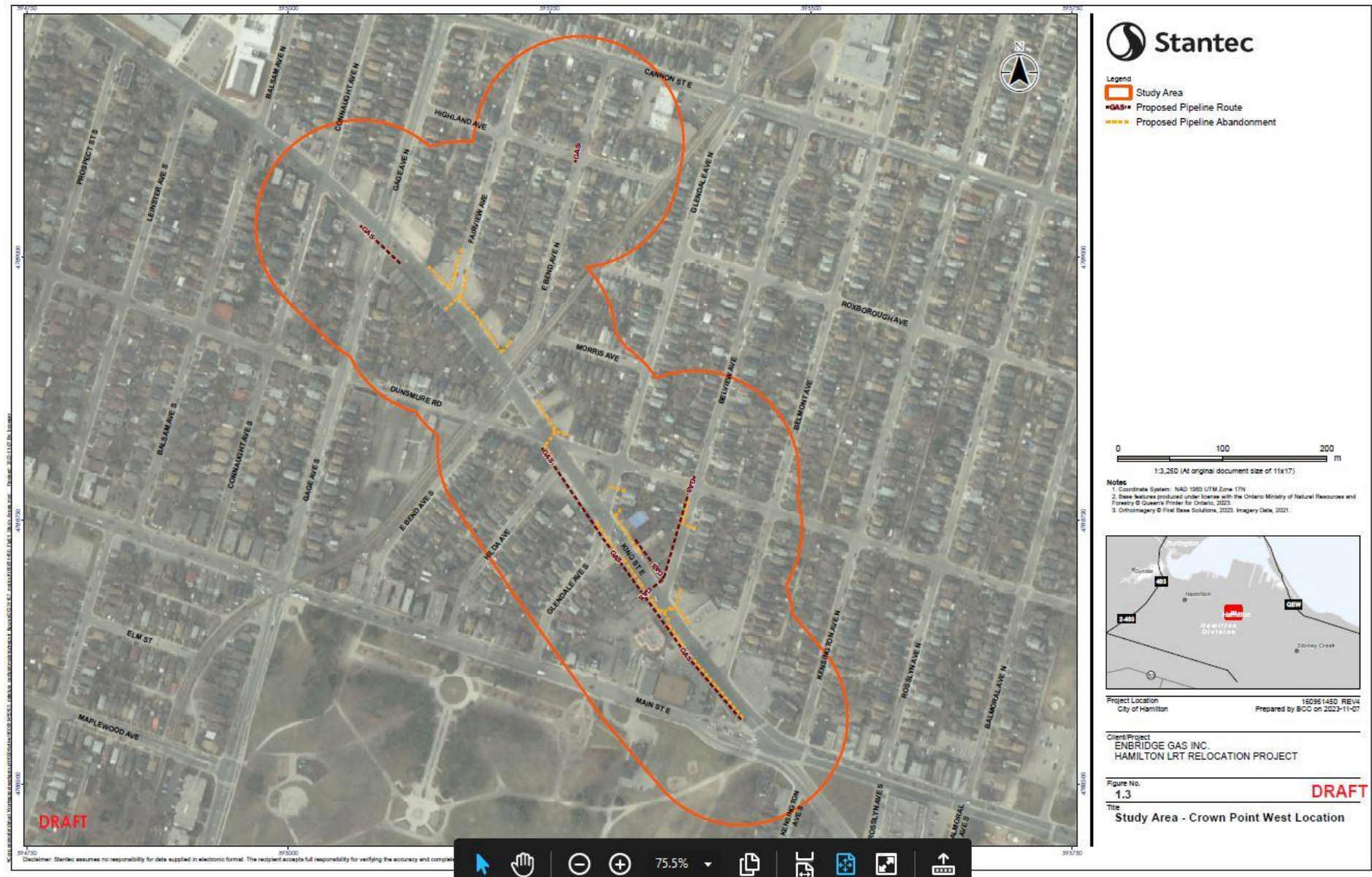
Crown Point West Location

Preliminary Preferred Route includes:

- Installation of approximately 60 m of 1.25-inch diameter plastic pipeline at King Street East and Gage Avenue South;
- Installation of approximately 25 m of 2-inch diameter plastic pipeline at Highland Avenue and East Bend Avenue North;
- Installation of approximately 156 m of 2-inch diameter and 200 m of 8-inch diameter steel pipeline on King Street East (Dunsmure Road to Main Street East);
- Installation of approximately 50 m of 1.25-inch diameter plastic pipeline on King Street East (Glendale Avenue North to Belview Avenue) onto Metrolinx private property easement;
- Installation of approximately 110 m of 8-inch diameter steel pipeline on Belview Avenue (Dunsmure Road to King Street East); and
- Decommissioning of approximately 170 m of 1.25-inch and 477 m of 2-inch plastic, and 32 m of 8-inch steel pipelines on King Street East (Fairview Avenue to Belmont Avenue).

Hamilton Light Rail Transit Pipeline Relocation Project Virtual Information Session

Crown Point West Location



Hamilton Light Rail Transit Pipeline Relocation Project Virtual Information Session



Project Overview (continued)

Dalewood Location

Preliminary Preferred Route includes:

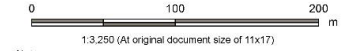
- Installation of approximately 310 m of 4-inch and 240 m of 6-inch diameter plastic natural gas pipelines on Main Street West (Emerson Street to Dalewood Avenue);
- Installation of approximately 110 m of 4-inch diameter plastic natural gas pipeline on Main Street West (West of Emerson Street) onto Metrolinx private property easement; and
- Decommissioning of approximately 350 m of 2-inch, 450 m of 4-inch, and 120 m of 6-inch diameter steel natural gas pipelines on Main Street West (Emerson Street to Dalewood Avenue).

Hamilton Light Rail Transit Pipeline Relocation Project Virtual Information Session

Dalewood Location



- Legend
- Study Area
 - Watercourse (Intermittent)
 - Watercourse (Permanent)
 - GAS Proposed Pipeline Route
 - Proposed Pipeline Abandonment



- Notes
1. Coordinate System: NAD 1983 UTM Zone 17N
 2. Base features produced under license with the Ontario Ministry of Natural Resources and Forestry © Queen's Printer for Ontario, 2023.
 3. Orthoimagery © First Base Solutions, 2023. Imagery Date: 2021.



Project Location: City of Hamilton
 Prepared by: 160851450 REV4
 Prepared by BCC on 2023-11-07

Client/Project:
ENBRIDGE GAS INC.
HAMILTON LRT RELOCATION PROJECT

Figure No. **1.1** **DRAFT**

Title
Study Area - Dalewood Location

Disclaimer: Stantec assumes no responsibility for data supplied in electronic format. The recipient accepts full responsibility for verifying the accuracy and completeness of the data. The recipient releases Stantec, its officers, employees, consultants and agents, from any and all claims arising in any way from the content or provision of the data.



Hamilton Light Rail Transit Pipeline Relocation Project

Virtual Information Session



Project Overview (continued)

Strathcona Phase 1 Location

Preliminary Preferred Route includes:

- Installation of approximately 120 m of 6-inch diameter plastic pipeline at Dundurn Street South and King Street West;
- Installation of approximately 190 m of 2-inch diameter plastic and 300 m of 4-inch diameter steel pipelines on King Street West (Dundurn Street South to Margaret Street) on Metrolinx private property easement;
- Installation of approximately 25 m of 1.25-inch diameter plastic pipeline on New Street (Edison Street to King Street West);
- Installation of approximately 50 m of 1.25-inch diameter plastic pipeline on Strathcona Avenue South onto Metrolinx private property easement; and
- Decommissioning of approximately 50 m of 1.25-inch diameter steel, 170 m of 2-inch diameter steel, 320 m of 4-inch diameter steel, and 100 m of 8-inch diameter steel pipelines on King Street West (Dundurn Street South to Margaret Street).

Hamilton Light Rail Transit Pipeline Relocation Project Virtual Information Session



Project Overview (continued)

Strathcona Phase 2 Location

Preliminary Preferred Route includes:

- Installation of approximately 160 m of 2-inch, 365 m of 4-inch, and 60 m of 6-inch diameter plastic pipelines on King Street West (Margaret Street to Ray Street South) on Metrolinx private property easement and municipal right of way; and
- Decommissioning of approximately 27 m of 1.25-inch diameter plastic, 457 m of 2-inch and 115 m of 4-inch diameter steel pipelines on King Street West (Margaret Street to Ray Street South).

Hamilton Light Rail Transit Pipeline Relocation Project Virtual Information Session

Strathcona Phase 1 and 2 Location



Stantec

Legend
 Study Area
 GAS Proposed Pipeline Route
 Proposed Pipeline Abandonment

0 100 200 m
 1:3,250 (At original document size of 11x17)

Notes
 1. Coordinate System: NAD 1983 UTM Zone 17N
 2. Base features produced under license with the Ontario Ministry of Natural Resources and Forestry © Queen's Printer for Ontario, 2023.
 3. Orthomagnery © First Base Solutions, 2023. Imagery Date: 2021.

Project Location: City of Hamilton
 18036:1450 (REV4)
 Prepared by BCG on 2023-11-07

Client/Project:
 ENBRIDGE GAS INC.
 HAMILTON LRT RELOCATION PROJECT

Figure No: **1.2** **DRAFT**

Title
Study Area - Strathcona Phase 1 & 2 Location

Disclaimer: Stantec assumes no responsibility for data supplied in electronic format. The recipient accepts full responsibility for verifying the accuracy and completeness of the data. The recipient releases Stantec, its officers, employees, consultants and agents, from any and all claims arising in any way from the content or provision of the data.

Hamilton Light Rail Transit Pipeline Relocation Project

Virtual Information Session

Enbridge Gas' Engagement with Indigenous Peoples

Enbridge recognizes the diversity of Indigenous peoples who live where we work and operate. We understand that certain laws and policies have had destructive impacts on Indigenous cultures, languages, and the social and economic well-being of Indigenous peoples. We also recognize the importance of reconciliation between Indigenous peoples and broader society. We are committed to building positive and sustainable relationships with Indigenous peoples, based on trust and respect, and focused on finding common goals through open dialogue.

The Indigenous engagement program is based on adherence to the OEB's Guidelines and Enbridge Inc.'s company-wide Indigenous Peoples Policy, which Enbridge Gas follows. Enbridge's Indigenous Peoples Policy lays out key principles for establishing relationships with Indigenous groups, including:

- Recognizing the importance of the United Nations Declaration on the Rights of Indigenous peoples in the context of existing Canadian law
- Recognizing the legal and constitutional rights possessed by Indigenous peoples in Canada and the importance of the relationship between Indigenous Peoples and their traditional lands and resources;
- Engaging early to achieve meaningful relationships with Indigenous groups by providing timely exchanges of information, understanding and addressing Indigenous project-specific concerns, and ensuring ongoing dialogue regarding its projects, their potential impacts and benefits.
- Aligning Enbridge's interests with those of Indigenous communities through meaningful, direct Indigenous economic activity in projects corresponding to community capacity and project needs, where possible.

Hamilton Light Rail Transit Pipeline Relocation Project

Virtual Information Session



Environmental study process

As part of the planning process, Enbridge Gas has retained Stantec to undertake an Environmental Study for the project. The Environmental Study will fulfill the requirements of the Ontario Energy Board's (OEB) "*Environmental Guidelines for the Location, Construction, and Operation of Hydrocarbon Projects and Facilities in Ontario, 8th Edition (2023)*".

The study will:

- Undertake engagement to understand the views of interested and potentially affected parties.
- Consult with Indigenous communities to understand interests and potential impacts.
- Be conducted during the earliest phase of the project.
- Identify potential impacts of the project.
- Develop environmental mitigation and protective measures to avoid or reduce potential impacts.
- Develop an appropriate environmental inspection, monitoring, and follow-up program.

Hamilton Light Rail Transit Pipeline Relocation Project

Virtual Information Session



OEB review and approval process

It is anticipated that the Environmental Report (ER) for the study is scheduled to be completed in **May 2024**. Once complete, Enbridge Gas plans to file a Leave-to-Construct application for the project with the Ontario Energy Board (OEB). The application to the OEB will include the following information on the project:

- The need for the project
- Environmental report and mitigation measures
- Project costs and economics
- Pipeline design and construction
- Land requirements
- Consultation with Indigenous communities

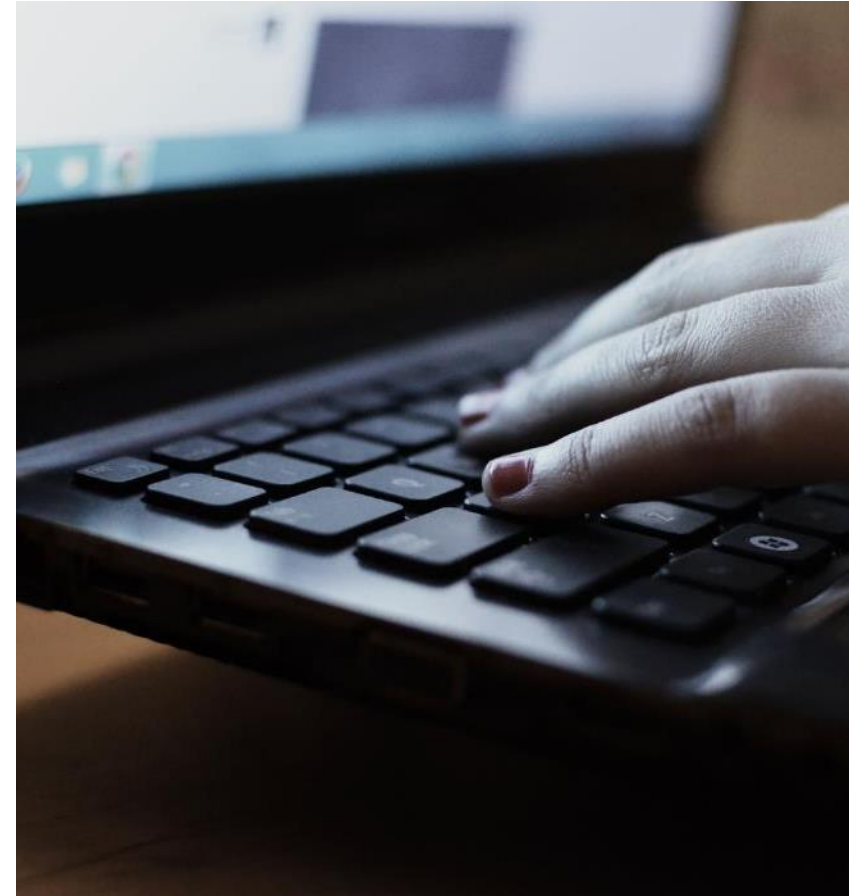
The OEB's review and approval are required before the proposed project can proceed. If approved, construction could begin in **Q4 2024**.

Additional information about the OEB process can be found online at: <https://www.oeb.ca/>

Hamilton Light Rail Transit Pipeline Relocation Project Virtual Information Session

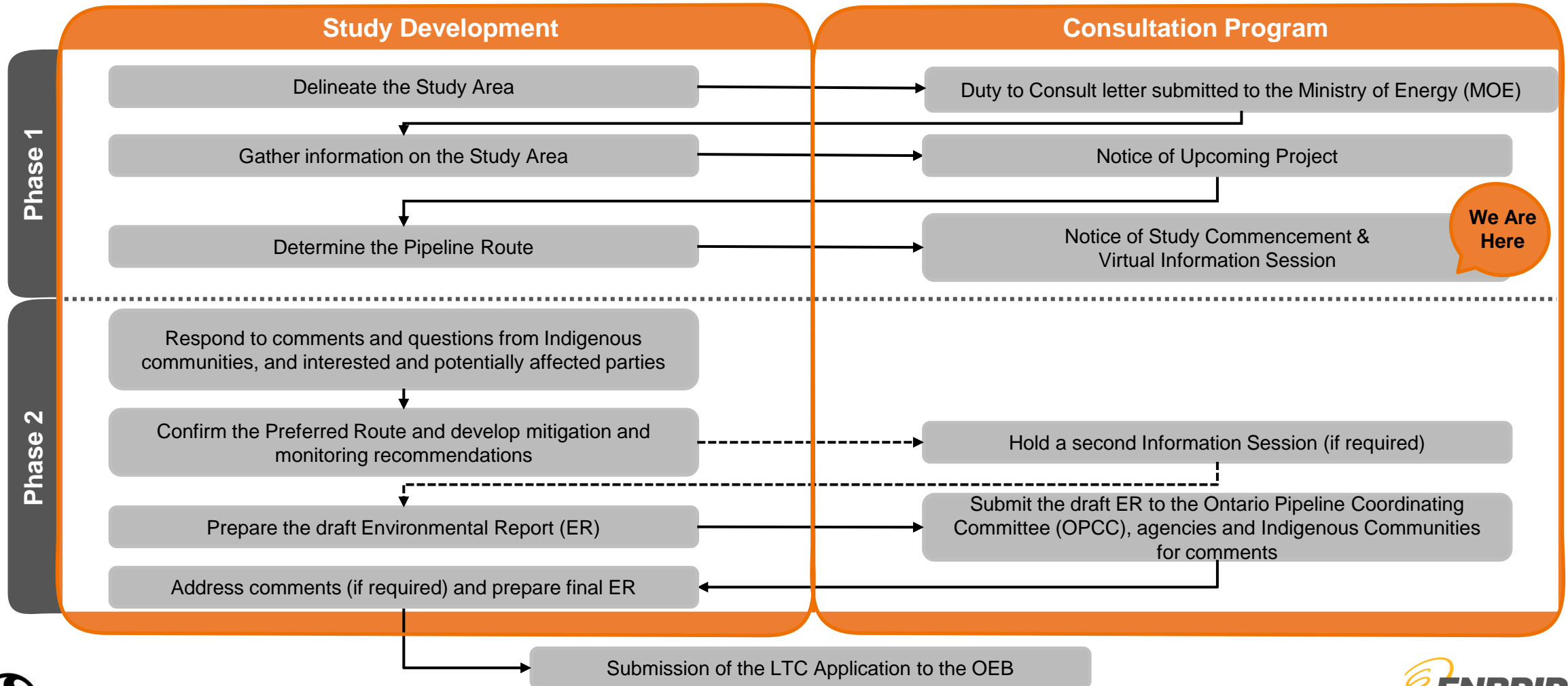
Consultation and engagement

- Consultation and engagement are key components of the ER.
- At the outset of the project, Enbridge Gas submits a Project Description to the Ministry of Energy (MOE). Upon review, the MOE determines potential impacts on Aboriginal or treaty rights and identifies Indigenous communities that Enbridge Gas will consult with during the entirety of the project.
- The consultation and engagement program helps identify and address Indigenous community and stakeholder concerns and issues, provides information about the project to the stakeholders and allows for participation in the project review and development process.
- Input during engagement and consultation will be used to help finalize the pipeline route and mitigation plans for the project.
- Once the Leave-to-Construct application is made to the OEB, any party with an interest in the project, including members of the public, can participate in the process.



Hamilton Light Rail Transit Pipeline Relocation Project Virtual Information Session

Environmental study process



Hamilton Light Rail Transit Pipeline Relocation Project

Virtual Information Session



Environment, health and safety policy

Our Commitment

- Enbridge Gas is committed to protecting the health and safety of all individuals affected by our activities.
- Enbridge Gas will provide a safe and healthy working environment and will not compromise the health and safety of any individual.
- Our goal is to have no incidents and mitigate impacts on the environment by working with our stakeholders, peers, and others to promote responsible environmental practices and continuous improvement.
- Enbridge Gas is committed to environmental protection and stewardship and recognizes that pollution prevention, biodiversity, and resource conservation are key to a sustainable environment.
- All employees are responsible and accountable for contributing to a safe working environment, for fostering safe working attitudes, and for operating in an environmentally responsible manner.



Hamilton Light Rail Transit Pipeline Relocation Project

Virtual Information Session



Access and land requirements

While most of the pipeline route will be constructed within municipal road right-of-way (ROW), some circumstances requiring access agreements, permanent easement or temporary working space during construction could result in the need for additional land outside of the road ROW.

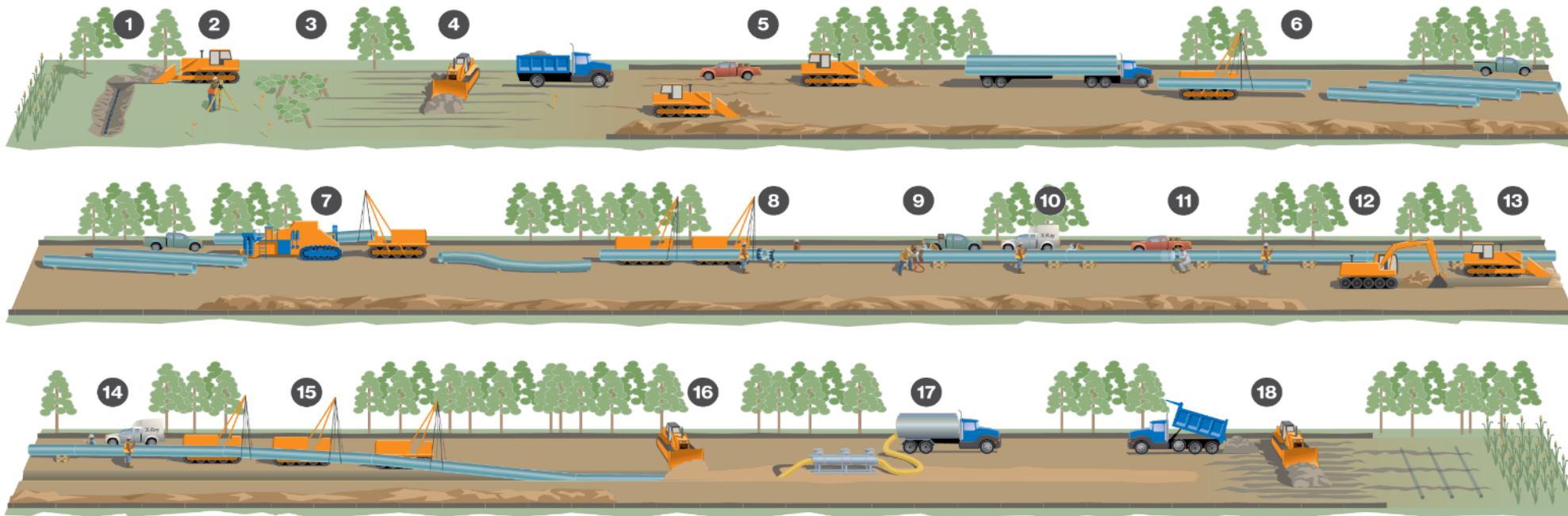
Enbridge Gas has a comprehensive Landowner Relations Program that uses a dedicated Lands Advisor who would:

- Provide direct contact and liaison between landowners and Enbridge Gas.
- Be available to the landowner during the length of the project and throughout construction activities.
- Act as a singular point of contact for all landowners, and address concerns and questions.
- Address any legal matters relating to the temporary use of property, access agreements, permanent easements, and impacts or remedies to property.

Hamilton Light Rail Transit Pipeline Relocation Project

Virtual Information Session

Constructing an Enbridge Gas pipeline



- | | | | | | |
|----------------------------|-----------------------------------|-----------------------|---|---|---|
| 1. Pre-construction tiling | 4. Right-of-way topsoil stripping | 7. Field bending pipe | 10. X-ray or ultrasonic inspection, weld repair | 13. Padding trench bottom | 16. Backfilling |
| 2. Surveying and staking | 5. Front-end grading | 8. Lining-up pipe | 11. Field coating | 14. Final inspection and coating repair | 17. Hydrostatic testing |
| 3. Clearing | 6. Stringing pipe | 9. Welding process | 12. Digging the trench | 15. Lowering pipe | 18. Site restoration and post-construction tiling |

Hamilton Light Rail Transit Pipeline Relocation Project Virtual Information Session

Constructing an Enbridge Gas pipeline (continued)

The pipeline construction process includes various procedures, as described in the previous slide.

- **Photo 1:** Shows a typical Enbridge Gas natural gas pipeline. The Hamilton Light Rail Transit Pipeline Relocation Project will involve the installation of a pipeline ranging from 1.25 to 8 inches which will be smaller than the pipeline shown in Photo 1.
- **Photo 2:** Represents pipe stringing and preparation.
- **Photo 3:** Represents a typical trench that is created during the pipeline installation process.
- **Photo 4:** Represents the process of backfilling a trench and repaving once construction is complete.



Hamilton Light Rail Transit Pipeline Relocation Project

Virtual Information Session



Pipeline design

The steel and polyethylene (plastic) pipeline is designed to meet and/or exceed the regulations of the Canadian Standards Association (Z662 Oil and Gas Pipeline Systems) and the applicable regulations of the Technical Standards and Safety Association (TSSA).

Pipeline safety and integrity

Enbridge Gas takes many steps to ensure the safe, reliable operation of our network of natural gas pipelines, including:

- Design, construct, and test our pipelines to meet or exceed requirements set by industry standards and regulatory authorities.
- Continuously monitor the entire network.
- Perform regular field surveys to detect leaks and confirm that corrosion prevention methods are working as intended.

Hamilton Light Rail Transit Pipeline Relocation Project

Virtual Information Session



Socio-economic features

The project will mainly be constructed on the existing municipal road right-of-way adjacent to institutional, commercial and residential lands.

Potential effects

- Temporary increases in noise, dust and air emissions.
- Increased construction traffic volumes.
- Temporary impairment of the use of residential and/or commercial property.
- Ornamental vegetation clearing along the pipeline route.

Example mitigation measures

- Provide access across the construction area.
- Restrict construction to daylight hours and adhere to applicable noise by-laws.
- Develop and implement a Traffic Control Plan.
- Place fencing at appropriate locations for safety.
- Making contact information for a designated Enbridge Gas representative available prior to and throughout construction.
- Implement dust control measures.
- Re-vegetation of cleared ornamental vegetation areas as needed (including seeding/planting).

Hamilton Light Rail Transit Pipeline Relocation Project

Virtual Information Session



Cultural heritage resources

During construction, cultural heritage features such as archaeological finds, and heritage buildings, fences, and landscapes may be encountered.

Detailed field surveys will be conducted by independent, third-party archaeologists and cultural heritage professionals prior to construction, if required.

Potential effects

- Damage or destruction of archaeological or historical resources.

Example mitigation measures

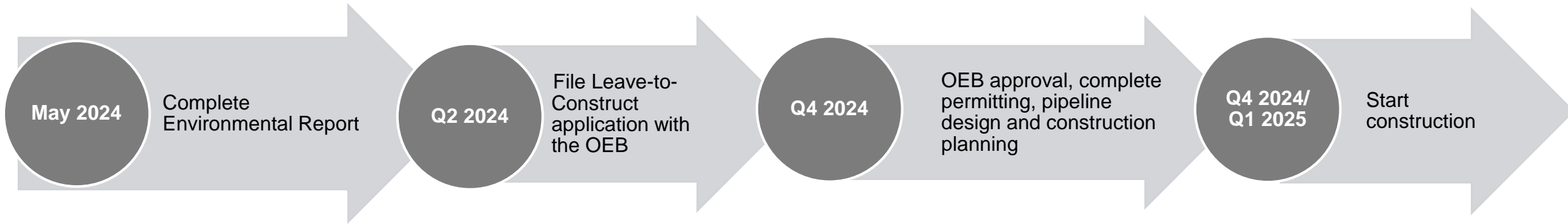
- Archaeological assessment of the construction footprint, with review and acceptance from the Ministry of Citizenship and Multiculturalism (MCM).
- Cultural heritage assessment (for built heritage features and cultural heritage landscapes) of the construction right-of-way, with review and comment from the MCM.
- Reporting of any previously unknown archaeological or historical resources uncovered or suspected of being uncovered during excavation.

Hamilton Light Rail Transit Pipeline Relocation Project Virtual Information Session



Next steps

After this **Virtual** Information Session, Enbridge Gas intends to pursue the following schedule of activities:



Hamilton Light Rail Transit Pipeline Relocation Project Virtual Information Session

Thank you!

On behalf of the project team, thank you for listening to the presentation. Please complete a Questionnaire (located in the Resources Tab) by **December 19, 2023**, for your comments to be considered as part of the Environmental Report.

Michael Candido

Project Manager
Assessment & Permitting

Stantec Consulting Ltd.
Phone: (519) 585-3439
Email: HamiltonLRTEA@stantec.com

Kristin Kimpinski

Environmental Advisor
Lands, Permitting & Environment

Enbridge Gas Inc.
Phone: (905) 927-3279

For more information about the proposed project, please visit the Enbridge Gas project website at enbridgegas.com/HLRTrelocation

