

Lake Ontario

Source: Esri, Maxar, Earthstar Geographics, and the GIS User Community



- Proposed Station Rebuild
- ◡ Existing Gates
- Proposed Stations (Approximate)
- Alternative Route 3
- Expressway / Highway
- Railway
- Major Roads

ALTERNATIVE ROUTE 3

PAGE 1

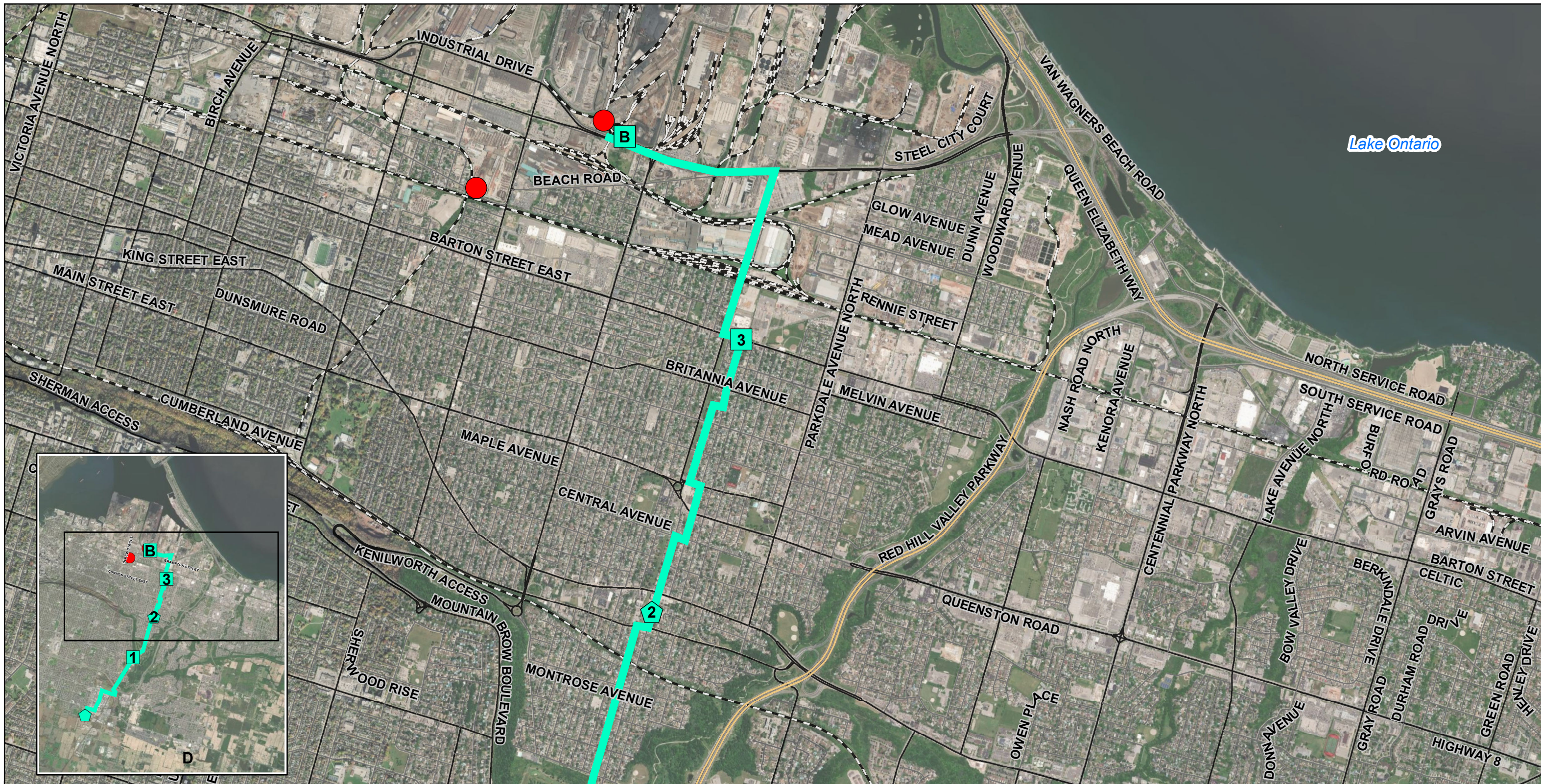


MAP DRAWING INFORMATION:
 DATA PROVIDED BY MNR, ENBRIDGE
 AERIAL PROVIDED BY ESRI
 MAP CREATED BY: DU
 MAP CHECKED BY: AL
 MAP PROJECTION: NAD 1983 UTM Zone 17N

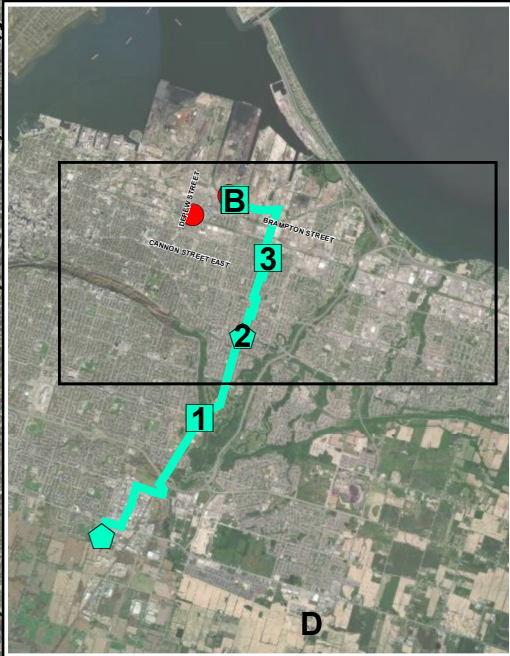
SCALE 1:45,000

0 500 1,000 2,000 Meters

PROJECT: 22-5167 STATUS: DRAFT DATE: 2023-02-17



Lake Ontario



- Proposed Station Rebuild
- ◆ Existing Gates
- Expressway / Highway
- Local / Street
- Proposed Stations (Approximate)
- Alternative Route 3
- Major Roads
- Railway

ALTERNATIVE ROUTE 3

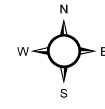
PAGE 2



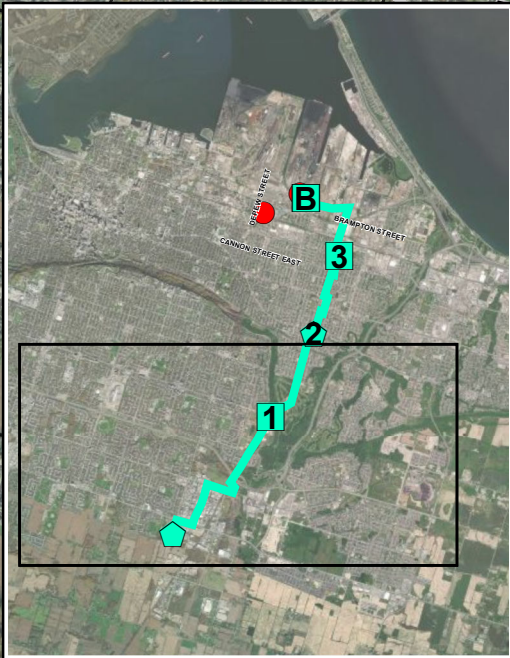
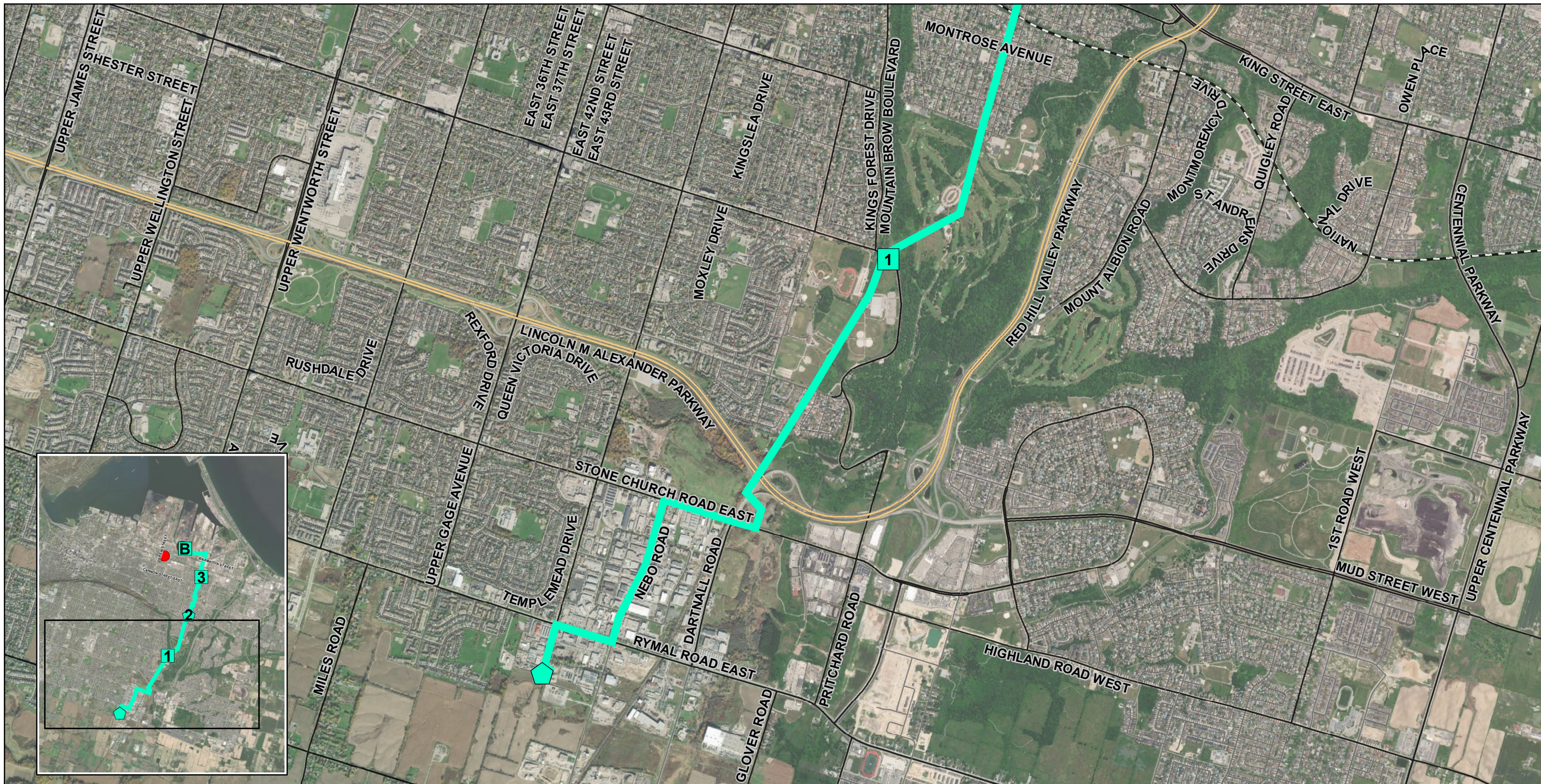
MAP DRAWING INFORMATION:
DATA PROVIDED BY MNR, ENBRIDGE
AERIAL PROVIDED BY ESRI

MAP CREATED BY: DU
MAP CHECKED BY: AL
MAP PROJECTION: NAD 1983 UTM Zone 17N

SCALE 1:25,000



PROJECT: 22-5167 STATUS: DRAFT DATE: 2023-02-17



- Proposed Stations (Approximate)
- Alternative Route 3
- Major Roads
- Railway
- Existing Gates
- Expressway / Highway
- Local / Street

ALTERNATIVE ROUTE 3

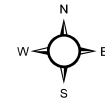
PAGE 3



MAP DRAWING INFORMATION:
DATA PROVIDED BY MNRF, ENBRIDGE
AERIAL PROVIDED BY ESRI

MAP CREATED BY: DU
MAP CHECKED BY: AL
MAP PROJECTION: NAD 1983 UTM Zone 17N

SCALE 1:25,000



PROJECT: 22-5167 STATUS: DRAFT DATE: 2023-02-17