

### OVERVIEW

Enerline Direct Connect, the first automated utility web service of its kind in Ontario, has been upgraded to use state-of-the-art Windows Communication Foundation technology. Through this free service you can automatically pull your daily distribution consumption measurement data straight to your computer application on an unattended basis.

Enerline Direct Connect offers the following benefits:

- Connect directly to Enerline's database anytime to retrieve daily and hourly consumption data to your computer application on an unattended basis. Your IT department will need to configure your application to automatically retrieve your daily consumption data – it's that easy!
- Retrieve up to 65 days of historical consumption automatically. Of course, you can still find and locally store additional historical daily data through Enerline's Distribution Measurement download feature.
- Flexibility to select the data you really need - whether by company, contract, location, or meter.
- Consolidate all your customers' consumption data all at once - it takes the hassle out of waiting to manually pull data for each of your customers.
- Schedule retrieval time to align with the availability of the previous gas day's measurement. Note: The previous gas day's measurement is available at approximately 1:30pm EST.

The new version web service inherits all the features of the previous version and has been enhanced to include some features:

- **Degree Day** has been added to the Daily measurement data feed.
- **Hourly Measurement** data can now be retrieved through a new web service call.

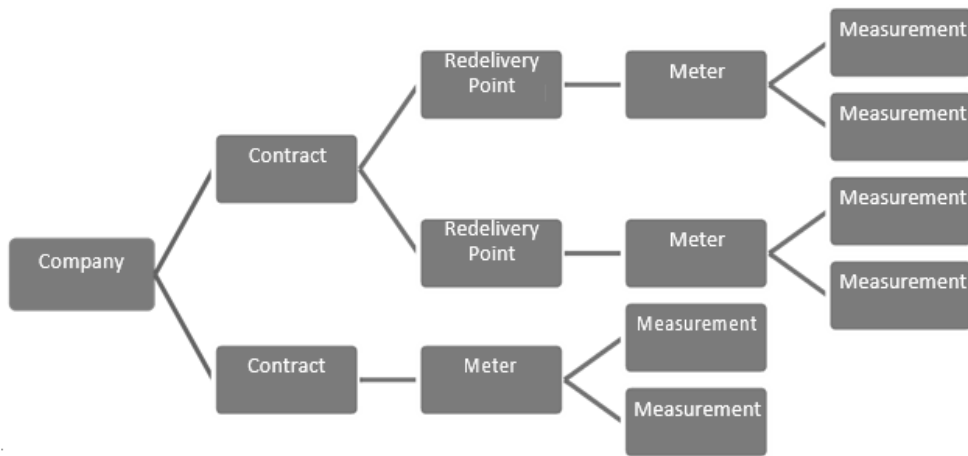
### GETTING ACCESS

Complete and submit a [Enerline Access Request Form](#).

The form must be approved by an individual with authority to bind the company (Authorized Signatory). An authorization email will be sent to the Authorized Signatory for approval purposes.

A service account user ID and temporary password will be issued to the Authorized Signatory by Enbridge Gas upon validation of the Enerline Direct Connect Service Agreement.

*Note regarding access for Agent Companies: The agent company must have the distribution measurement role in Enerline for the end use customer prior to requesting a Enerline Direct Connect Service Agreement on their behalf.*



Company	
ID	Company identifier
Name	Legal company name
Contract	
ID	Contract identifier – format is SA#####
Name	Recognized contract name
Redelivery Point (only applicable for certain contract classes, such as T-1)	
Name	Description of the location of the redelivery point
Meter	
Name	Location of the meter
Meter Number	Enbridge Gas assigned meter number
Premises	Premises identifier
Site Number	Site # at the location
Removed Indicator	Indicates whether the meter still exists at the location
Last Read Date	Date the meter was most recently read
Measurement (Daily)	
Gas Day	Gas day (10:00 am-10:00 am EST)
Corrected Volume	Corrected consumption in cubic meters
Corrected Energy	Corrected consumption in gigajoules
Measured Heat Value	Volume to energy conversion factor in GJ per10*3 m3
Peak Hour	Hour of the day during which the peak consumption occurred
Peak Hour Volume	Corrected volume during the peak hour
Uncorrected CCF (*)	Uncorrected consumption in hundred cubic feet
Uncorrected m3 (*)	Uncorrected consumption in cubic meters
Pressure (*)	Average pressure in kilopascals
Pressure Factor (*)	Average pressure factor
Temperature (*)	Average temperature in degrees Celsius
Temperature Factor (*)	Average temperature factor
SuperX Factor (*)	Average supercompressibility factor
DegreeDay	Degree Day for the gas day

<b>Measurement (Hourly)</b>	
Gas Day	Gas day to which the hourly data applies
MeasurementDateTime	The date and time when the measured hour ended (e.g. 11:00 = measurement from 10:00-11:00)
Corrected Volume	Corrected consumption in cubic meters
Uncorrected CCF (*)	Uncorrected consumption in hundred cubic feet
Uncorrected m3 (*)	Uncorrected consumption in cubic meters
Pressure (*)	Average pressure in kilopascals
Pressure Factor (*)	Average pressure factor
Temperature (*)	Average temperature in degrees Celsius
Temperature Factor (*)	Average temperature factor

(\*) – only available on certain meter configurations

NOTE: Because of rounding and the use of electronic corrector supplied data, aggregated hourly data may not reconcile to its daily equivalent.

## RETRIEVAL METHODS

Data retrieval through Enerline Direct Connect is via web method call. The GetDailyMeasurements web method retrieves detailed daily measurement data and returns it in XML format; and the GetHourlyMeasurements web method retrieves detailed hourly measurement data and returns it in XML format.

Both the GetDailyMeasurements and the GetHourlyMeasurements web method accept the following parameters:

Parameter Name		Description
MeasurementRequest	userName	Enerline Direct Connect service account user ID.
	password	The password that corresponds to the given service account.
	fromDate	Specifies the starting gas day of the requested measurements.
	toDate	Specifies the ending gas day of the requested measurements.
	contractIdList	A list of contracts to be retrieved (e.g. SA99999). This list can be empty.
	companyIdList	A list of companies to be retrieved (Party ID). All of the accessible distribution contracts are included in the request. Note that this parameter is ignored if the <b>contractIdList</b> is populated.

## RESOURCES

Enerline Access Request Form:

<https://enerline.enbridgegas.com/el/AccessManagement/AccessRequest>

Technical Resources:

Enerline Direct Connect Technical Usage Guide:

<https://www.enbridgegas.com/-/media/Extranet-Pages/Storage-and-transportation/enerline/Direct-Connect/EnerlineDirectConnectUsageGuide.pdf>

Enerline Direct Connect Sample SOAP Requests and Responses:

<https://enerline.enbridgegas.com/DirectConnect/Measurement/DistributionMeasurement.svc>

Enerline Direct Connect Service Description:

<https://enerline.enbridgegas.com/DirectConnect/Measurement/DistributionMeasurement.svc?WSDL>