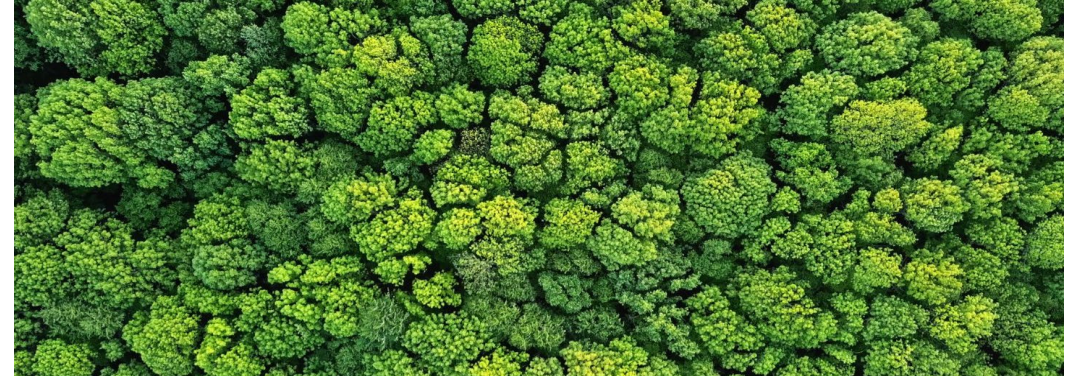


# Hamilton Airport Regional Expansion Project

Welcome to our virtual open house

February 21 to March 06, 2022



# Navigating the virtual open house

Visit the virtual open house at [hamiltonexpansionproject.ca](https://hamiltonexpansionproject.ca) for the following materials.

- This presentation
- The audio-video file of this presentation
- The transcript of this presentation
- A high-resolution map of the project
- A comment form

We encourage you to submit the online comment form through the virtual open house website once you have reviewed the materials.

You can also download and submit the PDF version of the comment form by email or contact us to submit comments by another means.

**The virtual open house will be hosted on the website from  
February 21 to March 06, 2022**

# Purpose of the project and virtual open house

Enbridge Gas Inc. (Enbridge Gas) is proposing a pipeline project to meet the increased demand for energy in Hamilton, Brantford, Brant County, North Dumfries, Haldimand County and Norfolk County.

Consultation with Indigenous communities and engagement with stakeholders are fundamental components of the planning and environmental study for the project.

A virtual open house is being hosted due to restrictions on public gatherings as a result of COVID-19.

The purpose of the virtual open house is to provide:

- Information about the project.
- Opportunity to ask questions and provide feedback.

All feedback and input received will be used to:

- Inform the selection of the preferred route option (for Component 1).
- Identify potential issues and site-specific mitigation, if required.



# Enbridge Gas Indigenous Peoples Policy

**Enbridge recognizes the diversity of Indigenous peoples who live where we work and operate. We understand from history the destructive impacts on the social and economic wellbeing of Indigenous Peoples. Enbridge recognizes and realizes the importance of reconciliation between Indigenous communities and the broader society.**

Positive relationships with Indigenous peoples, based on mutual respect and focused on achieving common goals, will create positive outcomes for Indigenous communities. Enbridge commits to pursue sustainable relationships with Indigenous Nations and groups in proximity to where Enbridge conducts business. To achieve this, Enbridge will govern itself by the following principles:

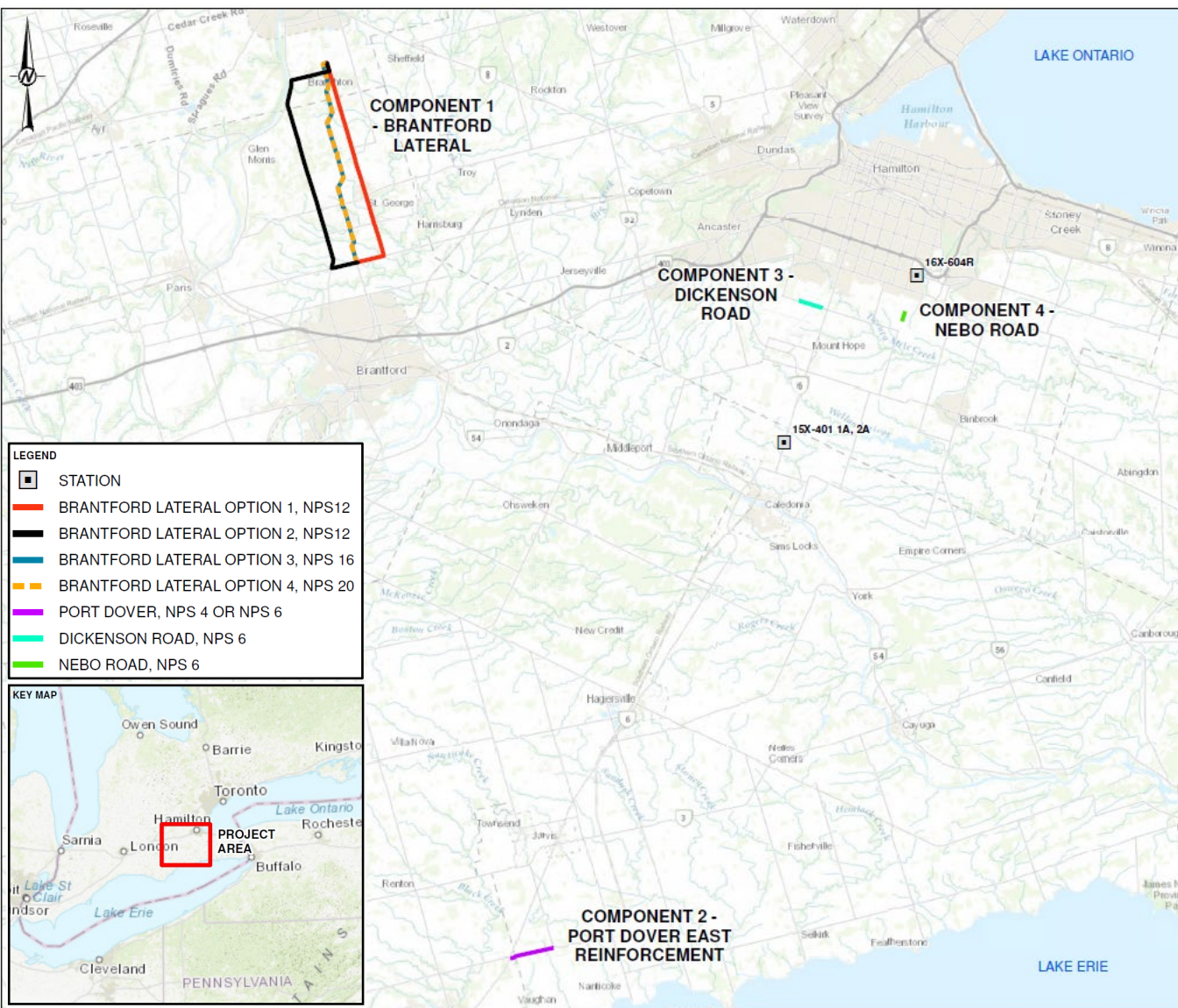
- **We recognize** the legal and constitutional rights possessed by Indigenous peoples, and the importance of the relationship between Indigenous Peoples and their traditional lands and resources. We commit to working with Indigenous communities in a manner that recognizes and respects those legal and constitutional rights and the traditional lands and resources to which they apply. We commit to ensuring that our projects and operations are carried out in an environmentally responsible manner.
- **We understand** the importance of the United Nations Declaration on the Rights of Indigenous Peoples in the context of existing Canadian law and the commitments that the government has made to protecting the rights of Indigenous Peoples.



# Enbridge Gas Indigenous Peoples Policy

- **We engage** in forthright and sincere consultation with Indigenous Peoples about Enbridge's projects and operations through processes that seek to achieve early and meaningful engagement. Indigenous engagement help define our projects that may occur on lands traditionally occupied by Indigenous Peoples.
- **We commit** to working with Indigenous Peoples to achieve benefits for them resulting from Enbridge's projects and operations, including opportunities in training and education, employment, procurement, business development, and community development.
- **We foster** understanding of the history and culture of Indigenous Peoples among Enbridge's employees and contractors, in order to create better relationships between Enbridge and Indigenous communities.

**This commitment is a shared responsibility involving Enbridge and its affiliates, employees and contractors. We will conduct business in a manner that reflects the above principles. Enbridge will provide ongoing leadership and resources to effectively implement the above principles, including the development of implementation strategies and specific action plans. Enbridge commits to periodically review this policy so that it remains relevant and respects Indigenous culture and varied traditions.**



# Project overview

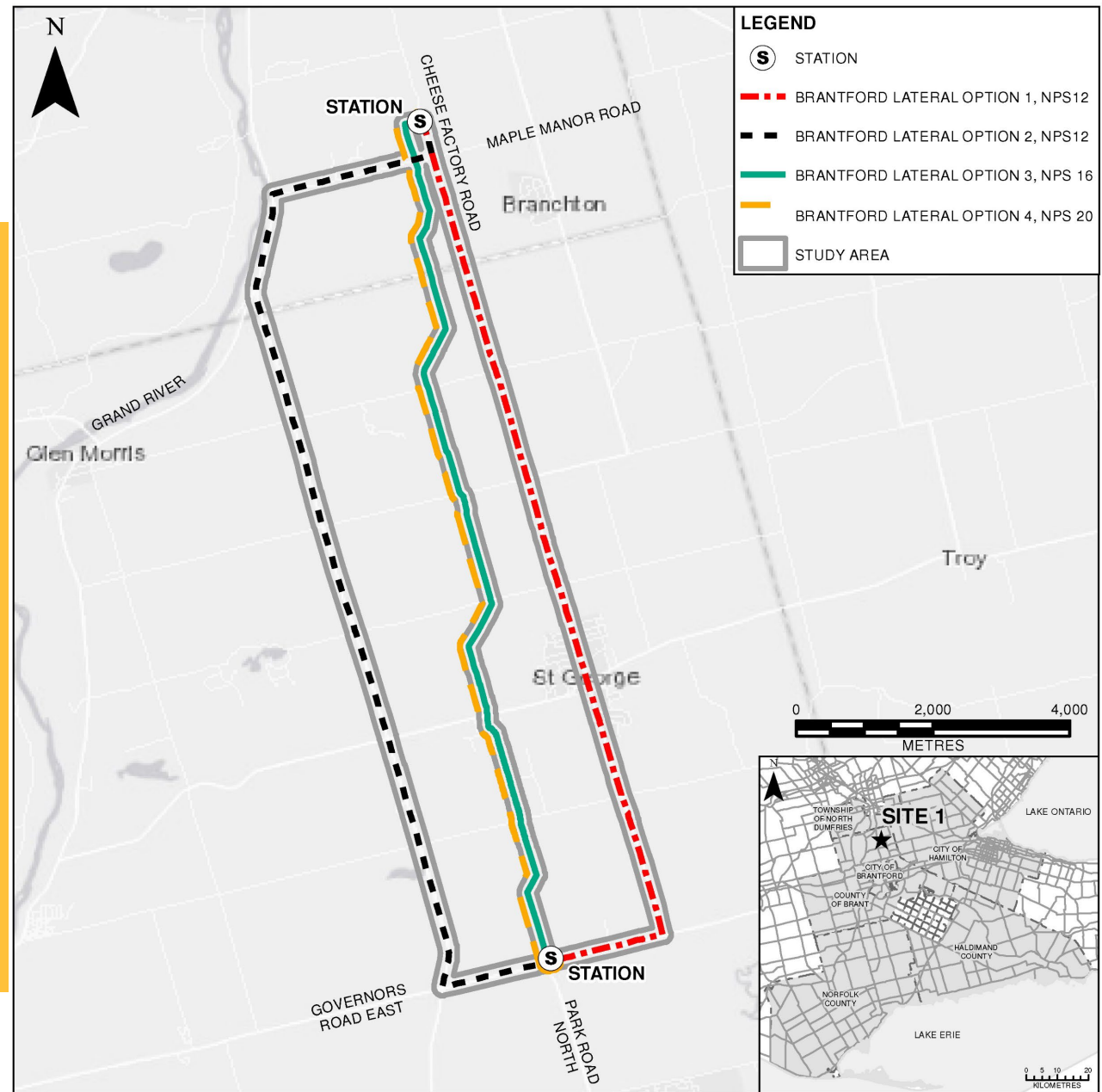
- To provide access to gas distribution services to customers located in Brantford and Hamilton, Ontario.
- Component 1:** 'Brantford Lateral', this component will consist of a steel natural gas transmission pipeline, which may range from 13 to 16.6 km in length, with a Nominal Pipe Size (NPS) diameter of 12, 16, or 20-inches.
- Component 2:** 'Port Dover East', this component consists of a 3 km steel natural gas distribution pipeline, (two options: 4 or 6-inch diameter).
- Component 3:** 'Dickenson Road', this component consists of the installation of a 1.6 km 6-inch diameter polyethylene (PE) pipeline.
- Component 4:** 'Nebo Road', this component consists of the installation of a 700 m 6-inch diameter PE pipeline.
- Station upgrades may be required.

See detailed maps on the following slides.

An interactive map that shows the proposed project components can be accessed from the website.

# Project Components

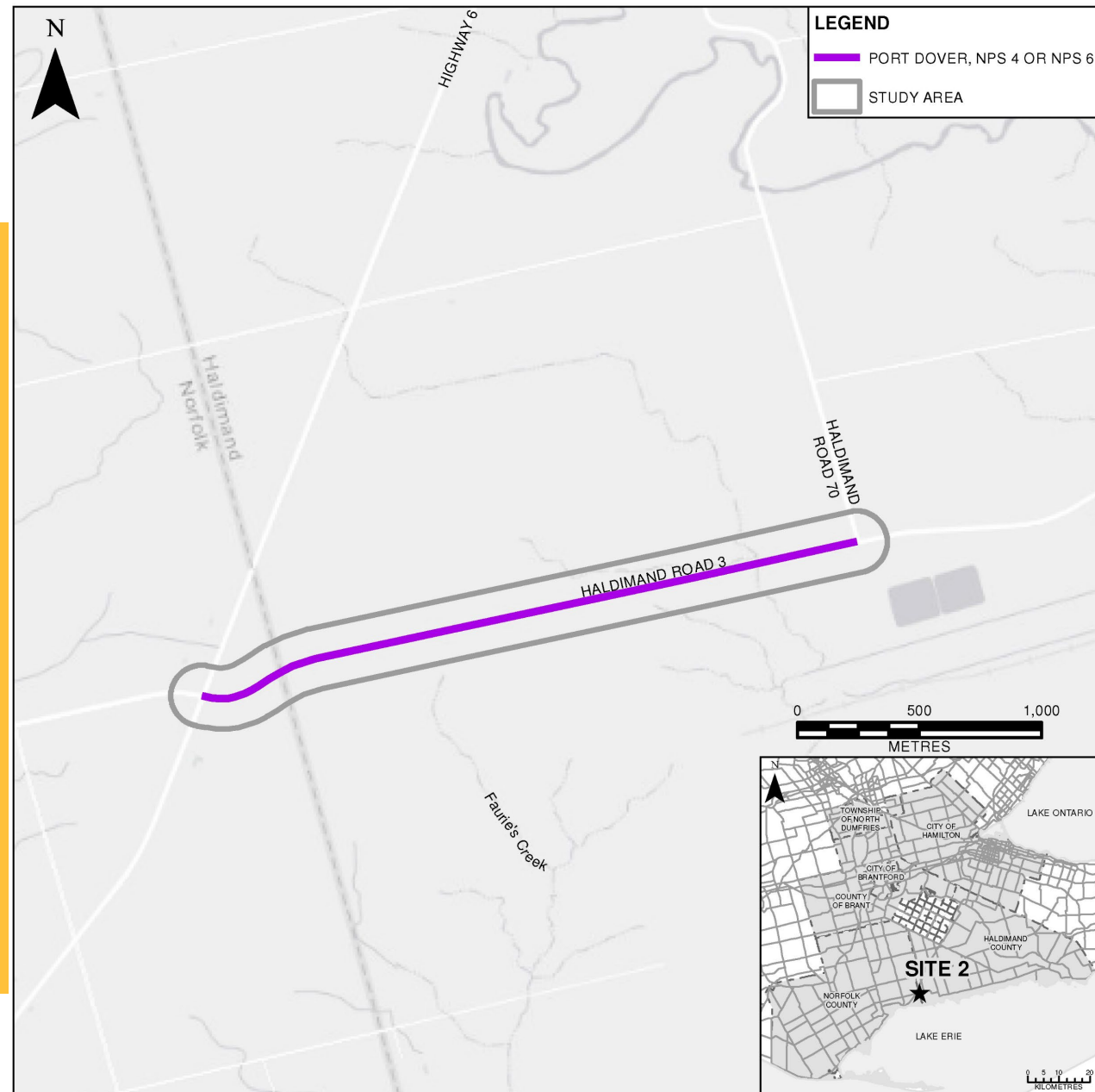
## Component 1: Brantford Lateral - 4 Options





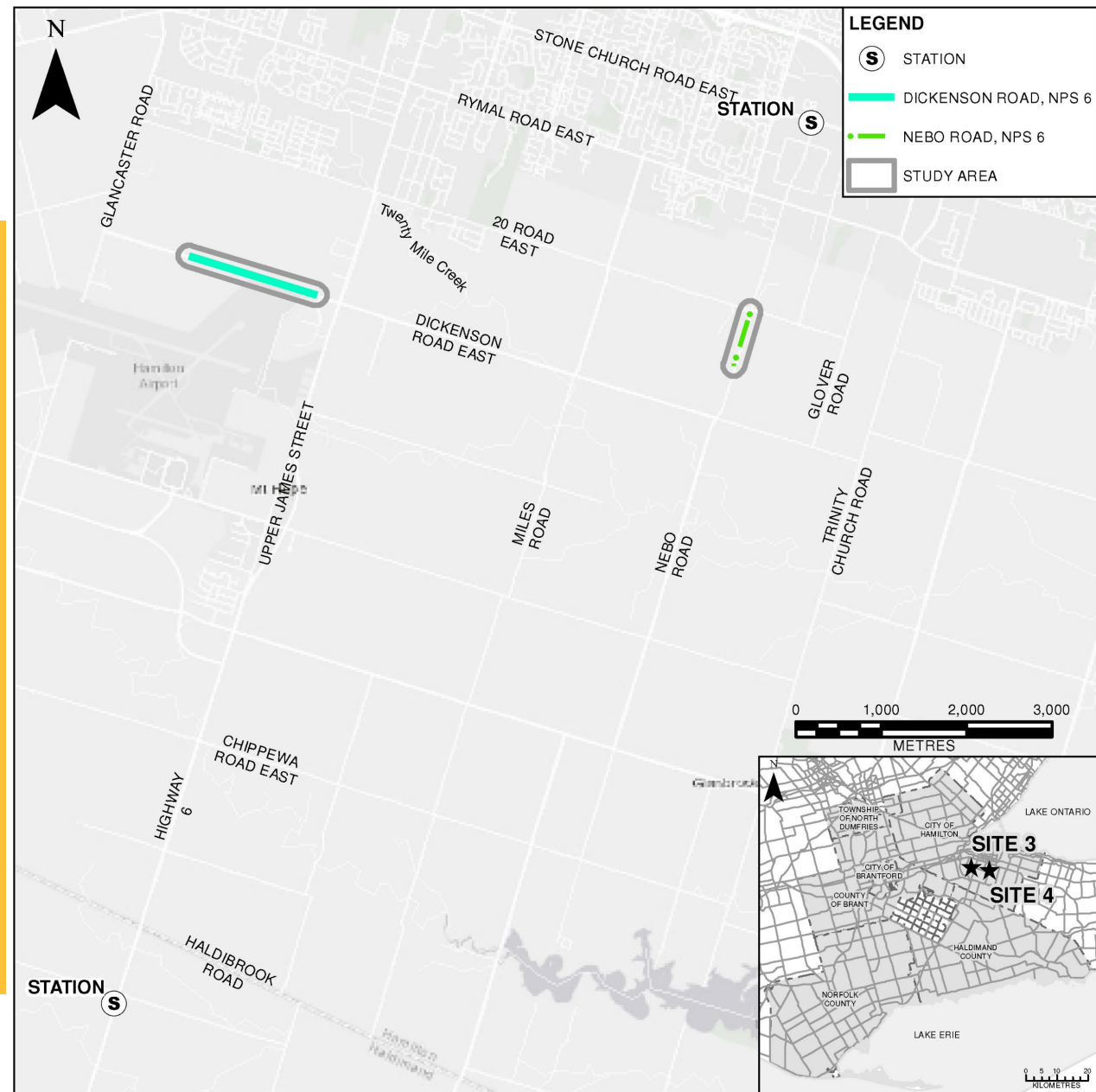
# Project Components

**Component 2:  
Port Dover East -  
2 options within the same  
study area (4 or 6-inch)**



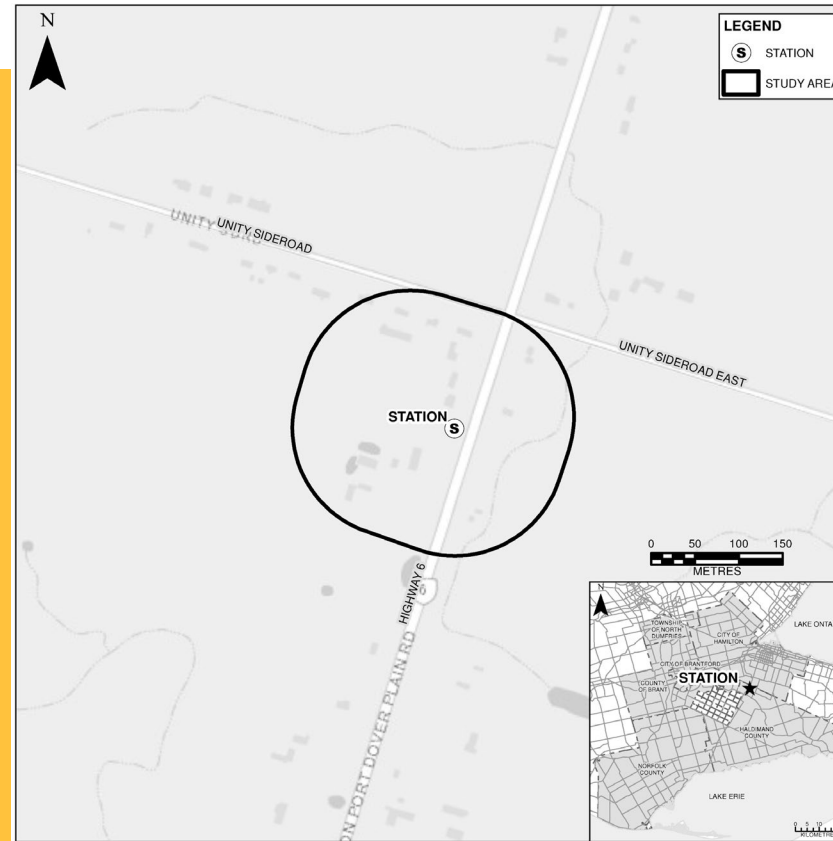
# Project Components

## Components 3 & 4: Dickenson Road Nebo Road



# Project Components

## Potential Station Upgrades



*Close to junction of Highway 6 and Unity Side Road*



*Close to junction of Nebo Road and Stone Church Road East*



# Ontario Energy Board review and approval process

An Environmental Study is being completed for the project and an Environmental Report will be prepared in accordance with the Ontario Energy Board's (OEB) *Environmental Guidelines for the Location, Construction and Operation for Hydrocarbon Pipelines and Facilities in Ontario*. These guidelines provide the planning requirements for new projects and the mitigation required for the construction of these projects.



## Who is the OEB?

- The OEB is the body that regulates the natural gas industry in Ontario to ensure that the public interest is served and protected. Once the Environmental Report is completed and the comment period has ended, Enbridge Gas will file an application for a Leave to Construct for the project with the OEB for approval.
- The OEB may order a written or oral hearing based upon the complexity of the project and the level of public concern. Members of the public will be invited by the OEB to participate in the hearing. The OEB will then make a decision about the application.
- Construction of the project can only proceed if the Leave to Construct is approved by the OEB.

# Environmental study and approval process

## *Phase 1 - Planning*

- Identify feasible route alternatives and study areas
- Establish existing environmental conditions
- Complete field studies
- Notify Indigenous communities and stakeholders

We are here

## *Phase 2 - Evaluation*

- Hold virtual open house
- Evaluate route alternatives
- Select preferred route
- Identify potential effects and mitigation for the preferred route
- Assess cumulative effects
- Complete Environmental Report

## *Phase 3 - Approvals*

- Submit Environmental Report to Ontario Pipeline Coordinating Committee
- File application for Leave to Construct with OEB
- OEB Hearing and Decision
- Obtain other permits and approvals

Ongoing consultation with Indigenous communities and engagement with stakeholders

# Selection of the preferred route

**The selection of the preferred route for Component 1, the ‘Brantford Lateral’, involves a comparative evaluation of the route alternatives, including the following:**

- Collection of information about existing conditions.
- Consideration of the following:
  - Environmental features (e.g., sensitive natural features).
  - Socio-economic and cultural heritage features (e.g., existing land use, future land use, heritage features).
  - Financial.
  - Technical aspects (e.g., existing linear corridors, reliability of supply, safety).
- Identification of the potential adverse environmental and socio-economic effects of each route alternative.
- Consideration of Indigenous and stakeholder input.

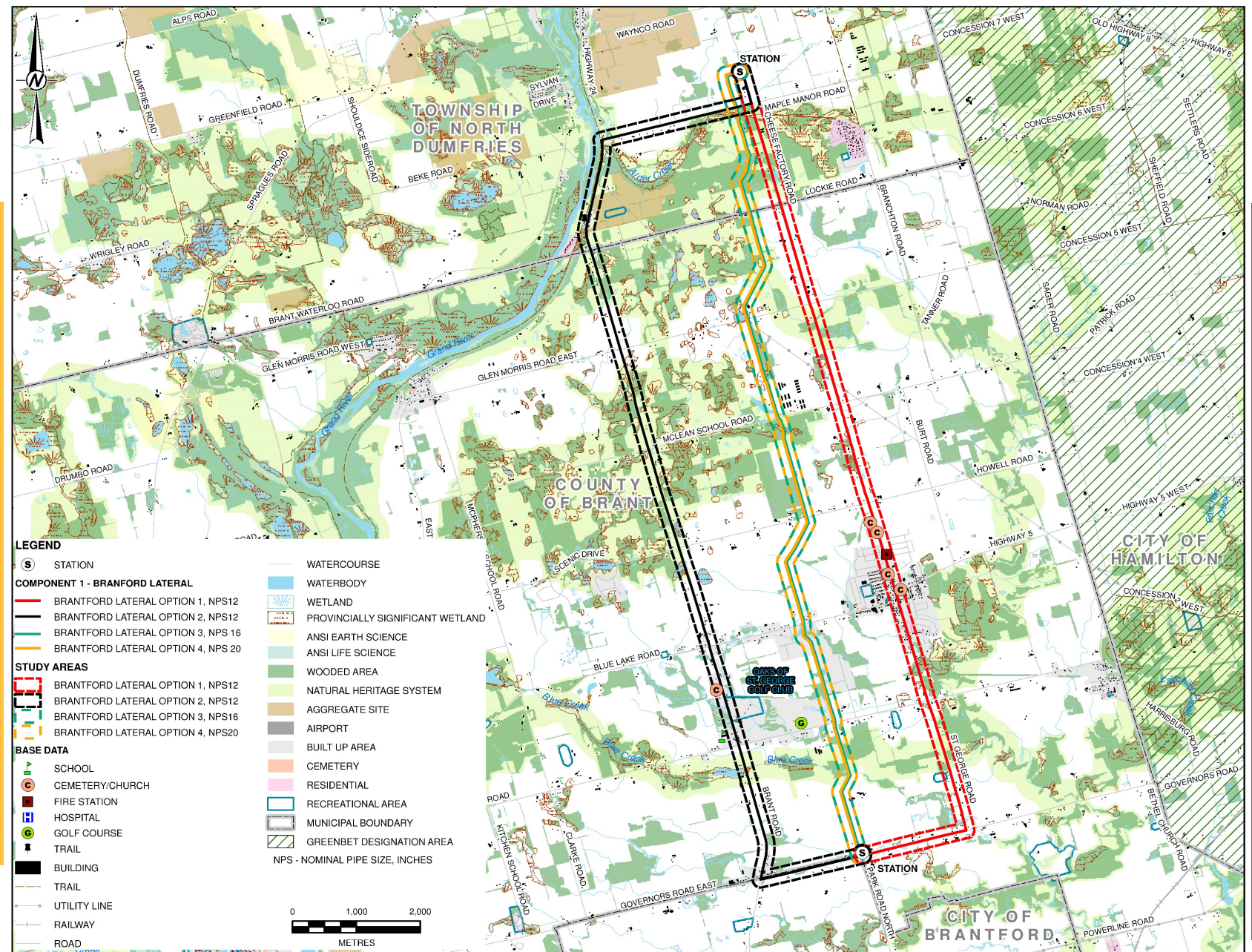


# Environmental study findings

- The desktop research and field studies considered the natural, socio-economic, and cultural environments.
- Understanding the existing conditions helps to identify the potential for environmental or social effects.
- Mitigation measures will be confirmed once the preferred route for Component 1 is selected, and input is received from interested parties.
- The results of the environmental study will be documented in the Environmental Report.

# Study area features

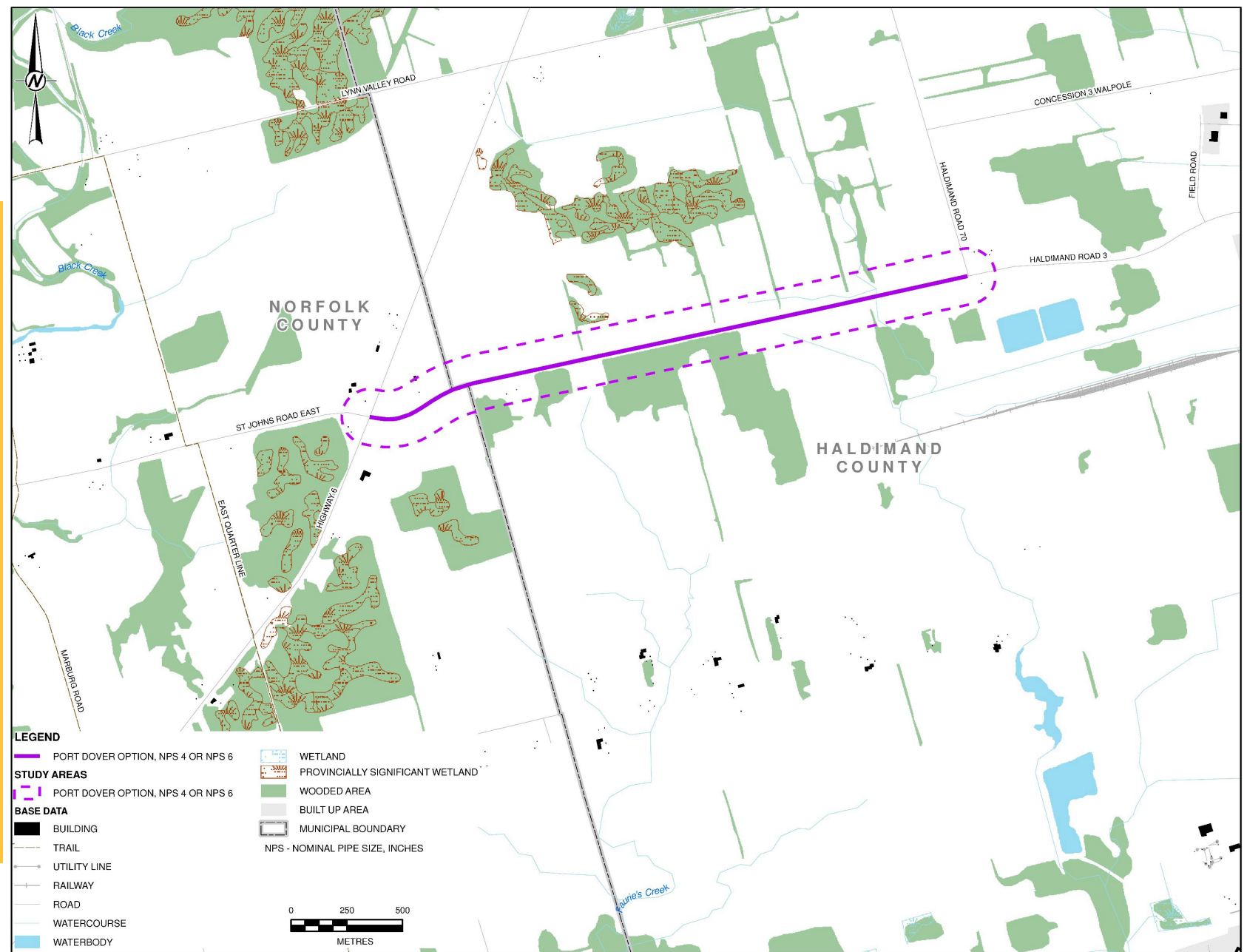
## Component 1: Brantford Lateral 4 Options





# Study area features

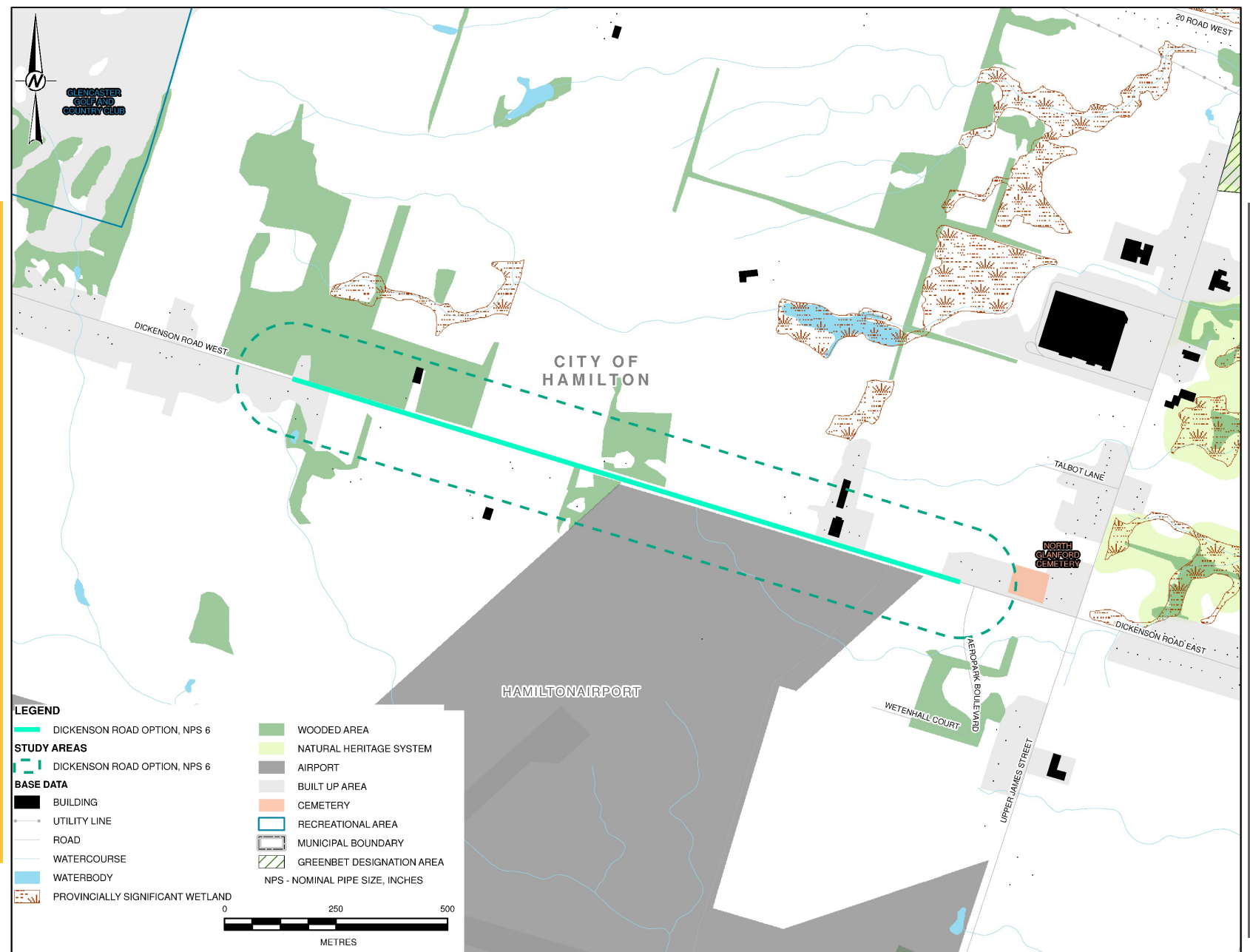
Component 2:  
Port Dover East  
2 options within the  
same study area (4  
or 6-inch)





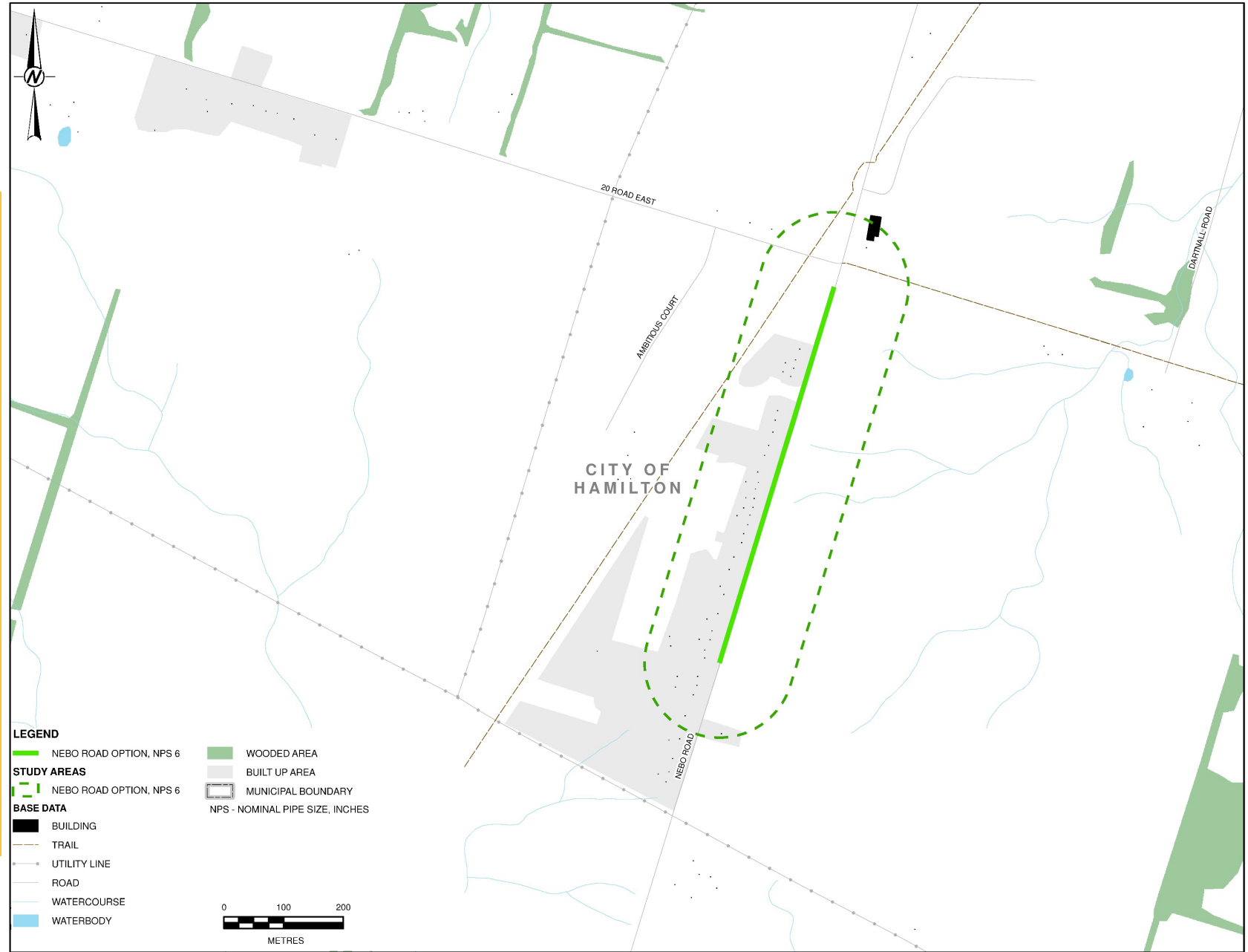
# Study area features

## Component 3: Dickenson Road



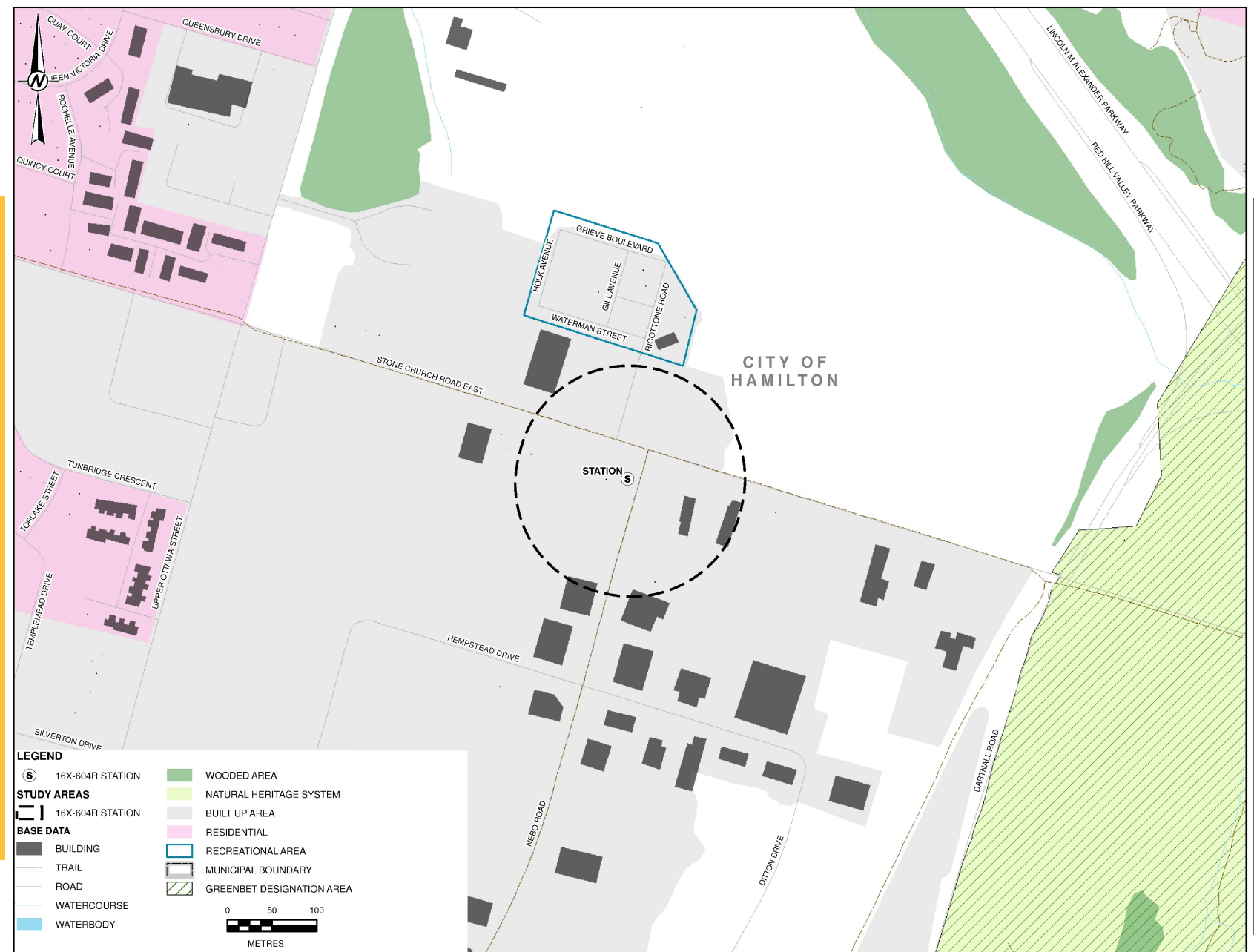
# Study area features

## Component 4: Nebo Road



# Study area features

Potential Station Upgrade:  
Close to junction of Nebo Road and Stone Church Road East



# Study area features

Potential Station Upgrade:  
Close to junction of Highway 6 and Unity Side Road

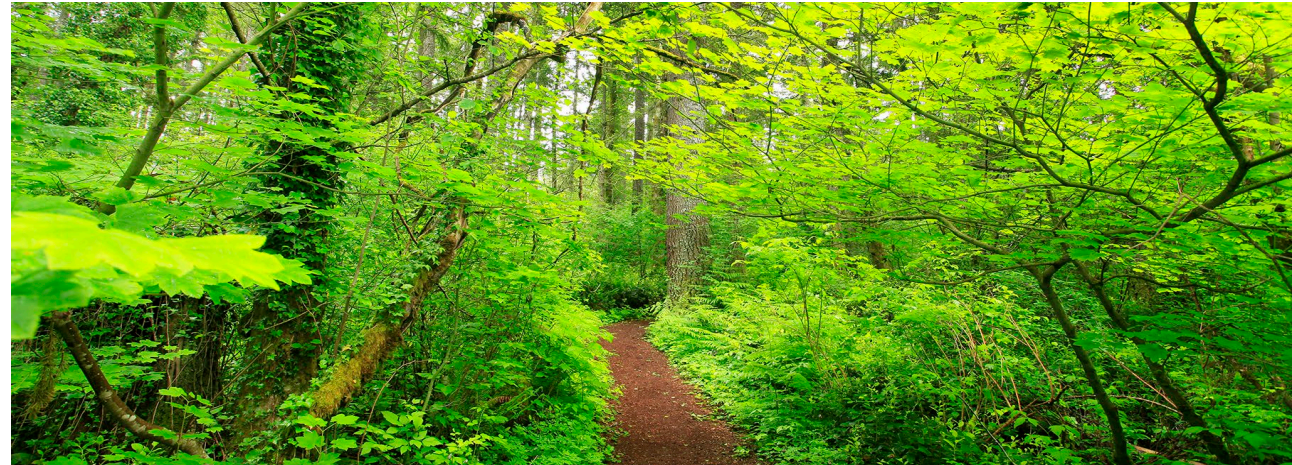




# Natural environment

## Features found within the study areas include:

- **Component 1**: Provincially significant wetlands (PSW) and woodlands identified along all Brantford Lateral options.
- One PSW along Option 2 is also an area of natural and scientific interest (ANSI).
- The Grand River runs adjacent to areas along the north of Option 2.
- Sensitive ecological communities identified along Options 2, 3 and 4.
- **Component 2**: Provincially significant wetlands identified.
- **Component 3**: Woodlands identified along the route.
- **Component 4**: Limited ecological features identified in the study area.
- **All Components**: Potential habitat for wildlife species, including species at risk.





# Natural environment



*Restoration works on another similar Enbridge Gas project*



**Potential effects** may include removal of vegetation, temporary alteration of wildlife habitat during construction, and increased erosion and sedimentation.

**Mitigation measures** may include:

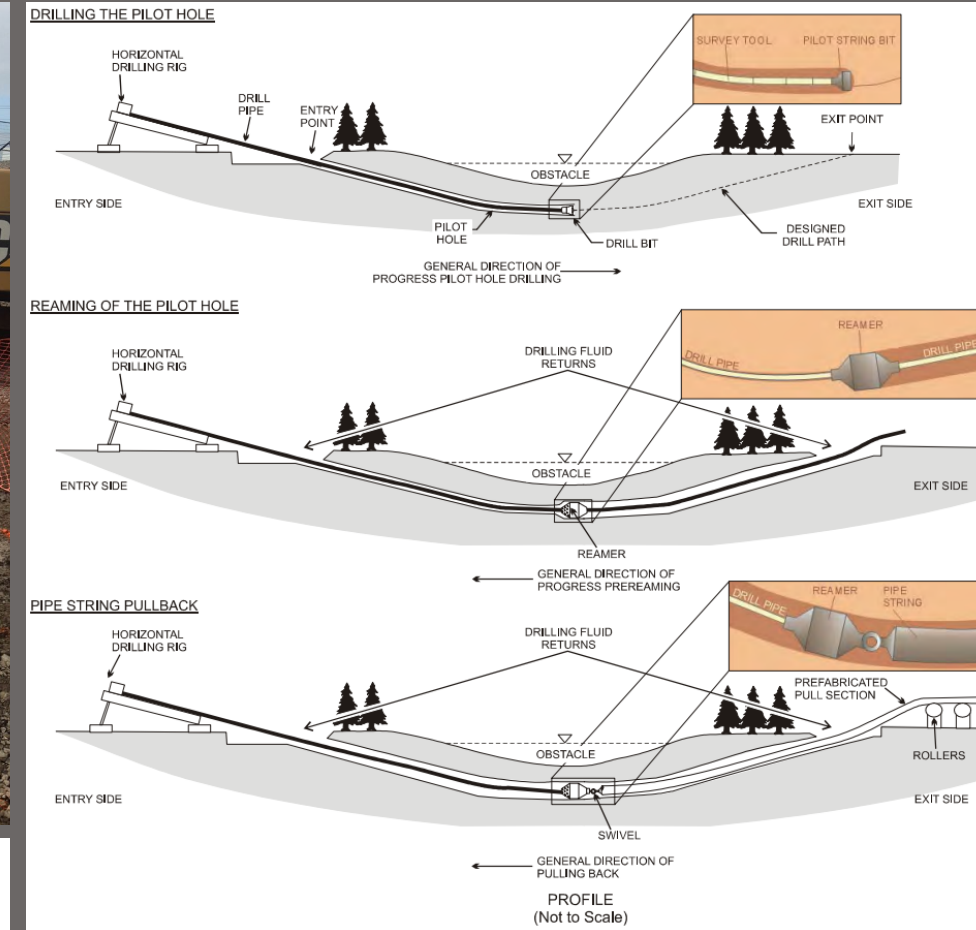
- Minimize temporary workspace areas and clearing of existing vegetation.
- Avoid vegetation clearing during the migratory bird nesting season.
- Avoid impacts to watercourse and wetlands by using horizontal directional drilling (HDD).
- Follow guidelines on fish timing windows.
- Implement erosion and sediment control measures.
- Clean up and restore construction areas as soon as possible after construction.

# Horizontal directional drilling

- The project includes pipeline crossings under watercourses using HDD installation methods.
- HDD is typically used for working in the vicinity of or crossing sensitive environmental features, such as watercourses or wetlands; specific locations shall be determined in the environmental studies. HDD is chosen as a construction technique to reduce or avoid environmental impact.
- HDD involves digging entry and exit pits outside the sensitive feature and using a drilling rod and drilling fluid to install the pipeline under the sensitive feature. Using advanced technology and highly trained technicians, the drill head guides the pipe electronically to ensure the angle, depth, and exit point adhere to carefully designed engineering plans.



**Example of Horizontal Directional Drilling work on a similar project.**





# Socio-economic environment

- **Component 1**: is located within the Township of North Dumfries and the County of Brant.
- The area is largely agricultural with residential homes and farm operations throughout.
- The area along Option 1 is the most densely built with a number of residences and businesses.
- There are cultural and recreational facilities in the area, including the Grand River and the Cambridge to Paris Rail Trail.
- **Component 2**: is located between Haldimand County and Norfolk County and is entirely within an agricultural area, and adjacent to an industrial area.
- **Components 3 and 4**: are located in Hamilton and within a mixture of residential and industrial buildings.





# Socio-economic environment



## Potential effects may include:

- Nuisance effects such as noise and dust.
- Road or lane closures and increased traffic volume.
- Limited access to recreational, community or institutional facilities and commercial businesses along the road where construction occurs.
- Disturbances to some agricultural operations, particularly along the easement route of Brantford Lateral Options 3 and 4.

## Mitigation measures may include:

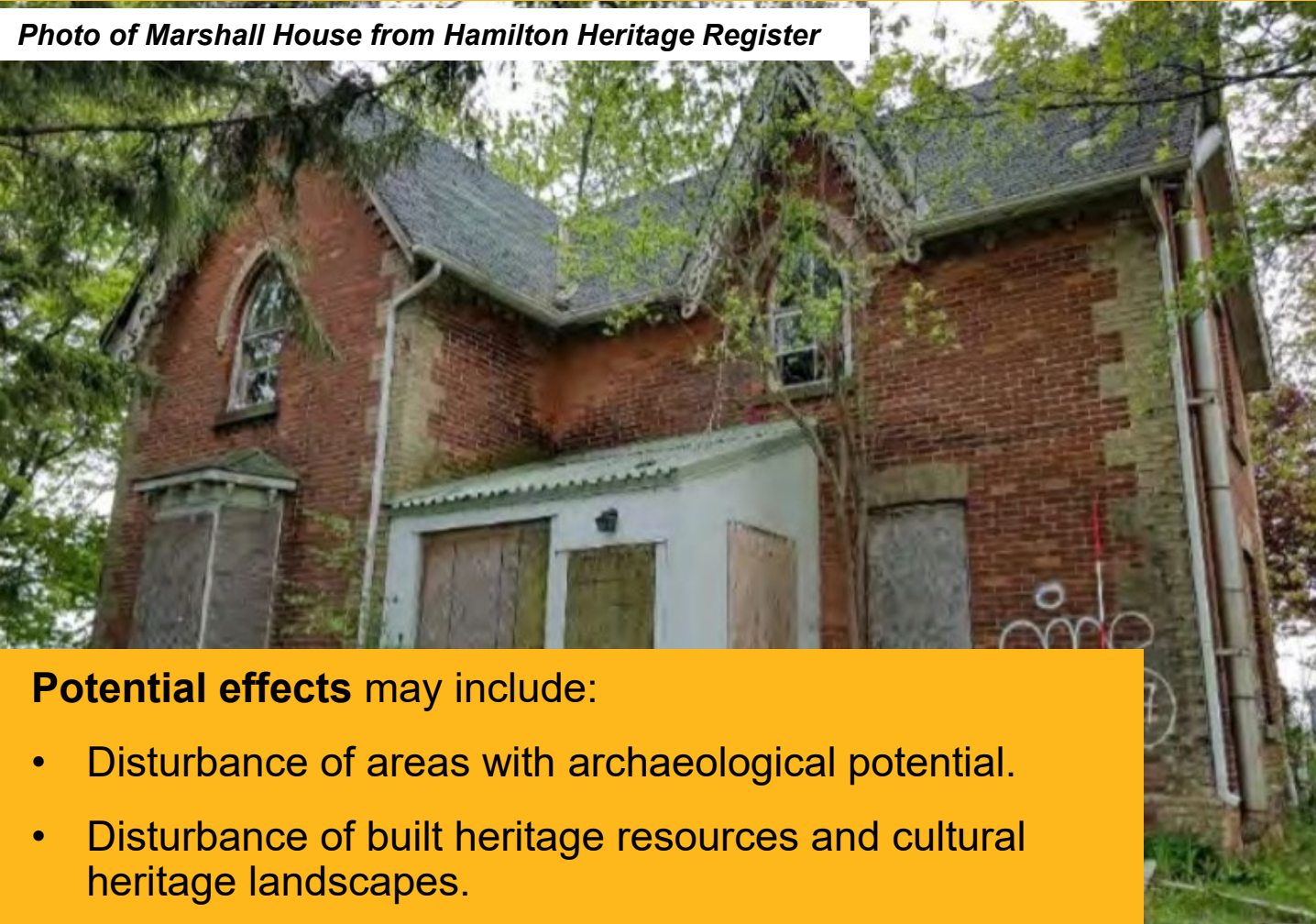
- Compliance with municipal noise by-laws.
- Implement best management practices to minimize noise and dust emissions.
- Develop and implement a traffic control and protection plan.
- Repair impacts to public roadways, sidewalks or other paved areas.
- Provide, in advance, the schedule for road closures and construction to municipalities, directly affected and adjacent property owners and businesses.





# Cultural environment

*Photo of Marshall House from Hamilton Heritage Register*



## **Potential effects** may include:

- Disturbance of areas with archaeological potential.
- Disturbance of built heritage resources and cultural heritage landscapes.

## **Mitigation measures** include:

- Complete further studies in areas with archaeological potential (i.e., Stage 2 archaeological assessment) along the preferred route prior to construction.
- If previously undocumented archaeological resources are discovered during construction, cease construction immediately, engage a licensed archaeologist to carry out further archaeological studies, and report the findings.
- Complete a Cultural Heritage Report: Existing Conditions and Preliminary Impact Assessment which will include field investigations to identify and assess at a preliminary level impacts on known and potential cultural heritage resources.



# Geology, Soils and Groundwater

## Features found within the study areas include:

- **Component 1:** Well Head Protection Areas for the St. George Municipal Supply Wells in Brant County.
- Source protection plans do not apply to pipeline operations; however, the construction and maintenance of the pipeline will adhere to all necessary best practices and mitigation measures.
- Brantford Lateral Options 3 and 4 would cross agricultural areas.
- **All Components:** Private water wells are located within the study areas of most of the project components.

## Mitigation measures include:

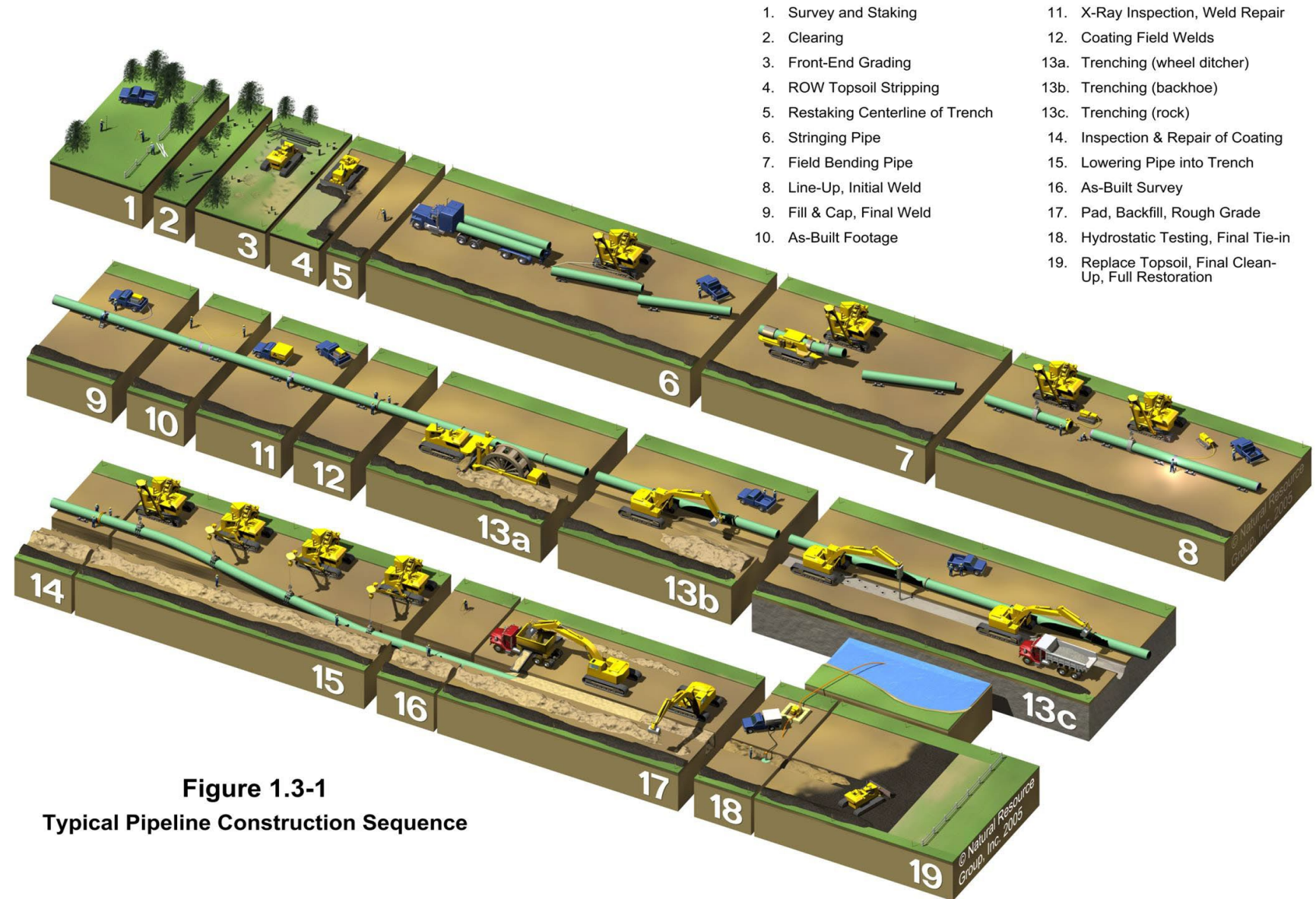
- Implementation of specific mitigation measures to protect soils from erosion and contamination during stripping, storage and reinstatement activities.
- Implementation of best management practices to govern working around groundwater, the storage of materials, fueling operations, equipment checks and maintenance.





## Typical pipeline design and construction

- Enbridge Gas pipelines are designed to meet or exceed the regulations of the Canadian Standards Association (Z662 Oil and Gas Pipeline Systems) and the applicable regulations of the Technical Standards & Safety Association.
- Construction activities are temporary and transitory.
- After construction, Enbridge Gas takes many steps to ensure safe, reliable operation of the network of our natural gas pipelines.



Used By Permission Natural Resource Group, Inc. © 2010

# Our commitment to environment, health and safety

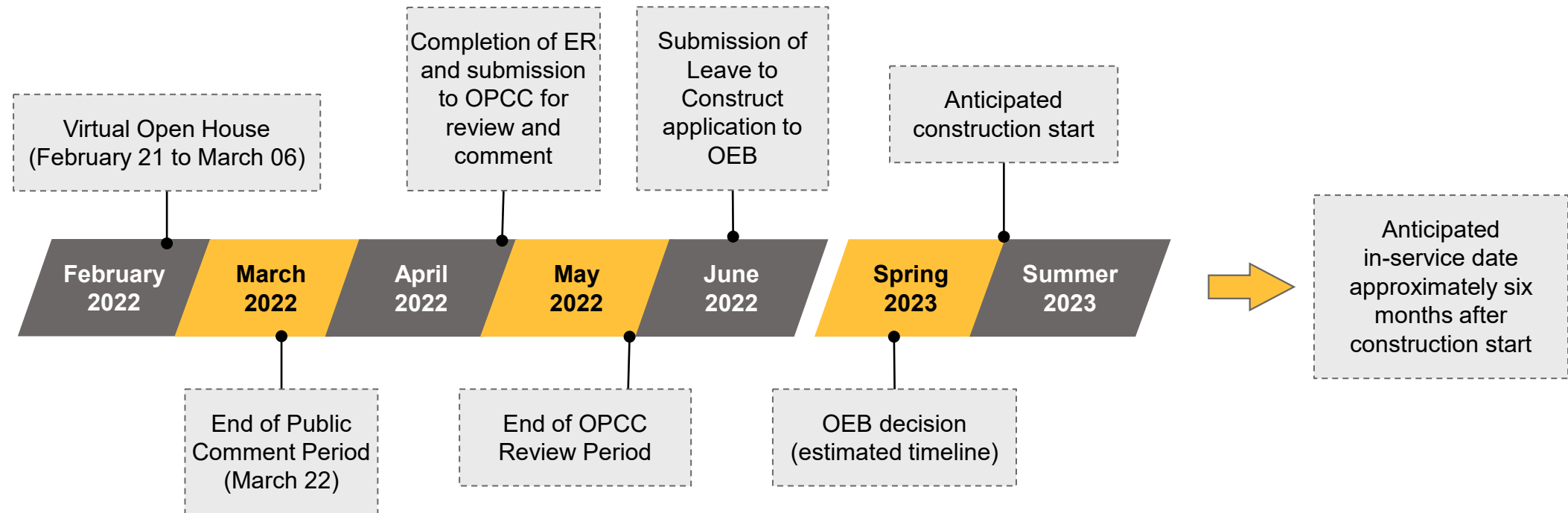


- **We are committed** to working with residents and businesses in the area on construction planning, mitigation measures and post-construction monitoring.
- **We are committed** to ensuring areas that are impacted during construction are restored as close to pre-construction condition as possible.
- **We are committed** to applying mitigation measures to prevent or reduce the level of impact. We will work with the residents and business owners to ensure issues are resolved collaboratively.
- **We are committed** to protecting the health and safety of all individuals affected by our activities. The safety of the public, our communities and our employees is our top priority.
- **We are committed** to safety in our processes, our people and our technologies, to ensure the safe construction and operation of our pipelines. We continually perform routine maintenance and, if required, implement repairs or other actions across our entire pipeline system.



# Proposed project timeline

The Environmental Study is underway. It is anticipated that the Environmental Report (ER) will be submitted to the Ontario Pipeline Coordinating Committee (OPCC) for review in April 2022.





# Next steps – submit your comments!



Please fill out the comment form online or submit by email



Email: [hamiltonexpansionproject@golder.com](mailto:hamiltonexpansionproject@golder.com)



End of comment period: March 22, 2022

*All comments and questions submitted for this project will be collected and considered in the development of an Environmental Report that will be part of the public record and will be made available to individuals or organizations with an interest in this project. Under the Freedom of Information and Protection Privacy Act, personal information such as name and address will not be included in the Environmental Report but may be released, if requested in accordance with the Act, to any person as part of the review of the Environmental Report.*

**Thank you!**

**Thank you for participating in the virtual open house  
for the Hamilton Airport Regional Expansion Project!**

If you have comments or questions, please contact:

**Kevin McGillicuddy, Golder Associates Ltd.**

**Telephone: 807-632-9713**

**George Tatolis, Enbridge Gas**

**Telephone: 437-998-2873**

**Email: [hamiltonexpansionproject@golder.com](mailto:hamiltonexpansionproject@golder.com)**

**Project Website: [enbridgegas.com/hamiltonairport](http://enbridgegas.com/hamiltonairport)**

