

Source: Esri, Maxar, Earthstar Geographics, and the GIS User Community



- Proposed Station Rebuild
- Proposed Station (Approximate)
- ⬠ Existing Stations
- Alternative Route 2
- Expressway / Highway
- Railway
- Major Roads

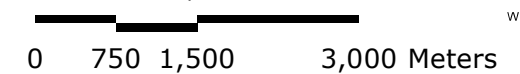
ALTERNATIVE ROUTE 2
PAGE 1



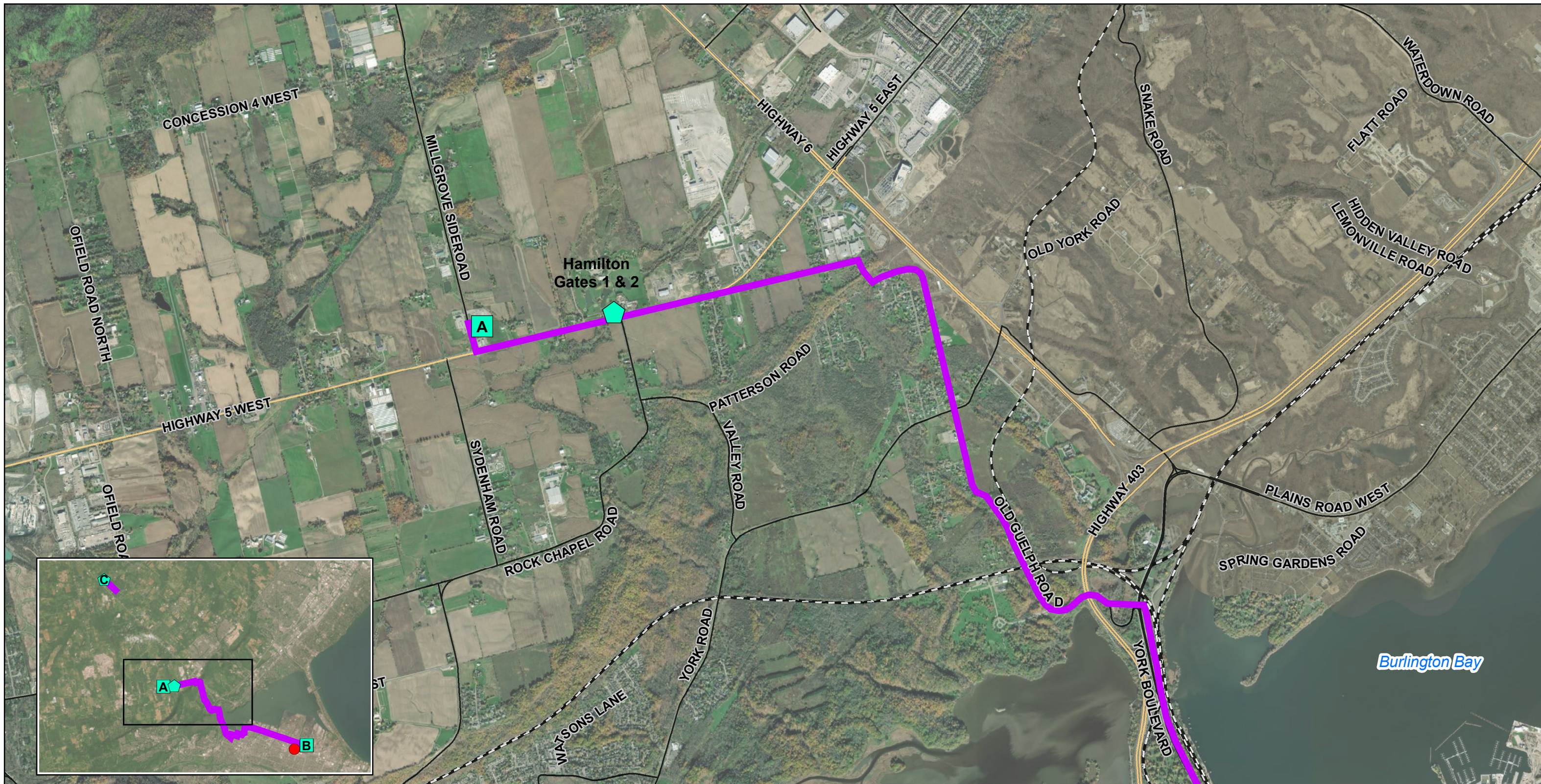
MAP DRAWING INFORMATION:
DATA PROVIDED BY MNR, ENBRIDGE
AERIAL PROVIDED BY ESRI

MAP CREATED BY: DU
MAP CHECKED BY: AL
MAP PROJECTION: NAD 1983 UTM Zone 17N

SCALE 1:70,000



PROJECT: 22-5167 STATUS: DRAFT DATE: 2023-02-21



- Proposed Station Rebuild
- Proposed Station (Approximate)
- ⬠ Existing Stations
- Alternative Route 2
- Expressway / Highway
- Major Roads
- Local / Street
- Railway

ALTERNATIVE ROUTE 2

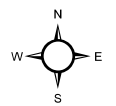
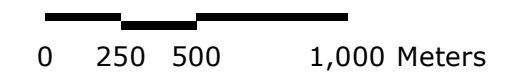
PAGE 2



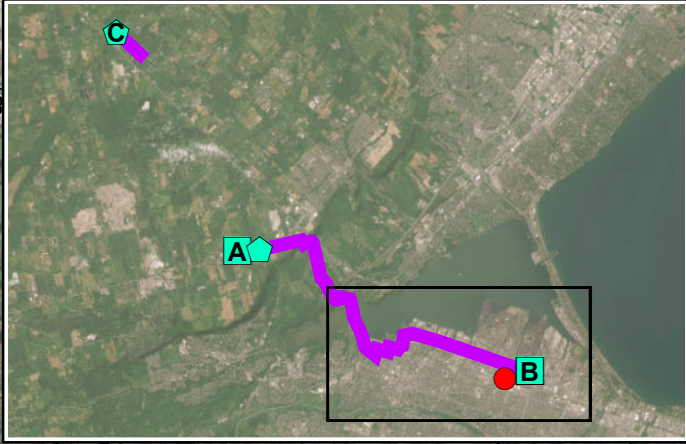
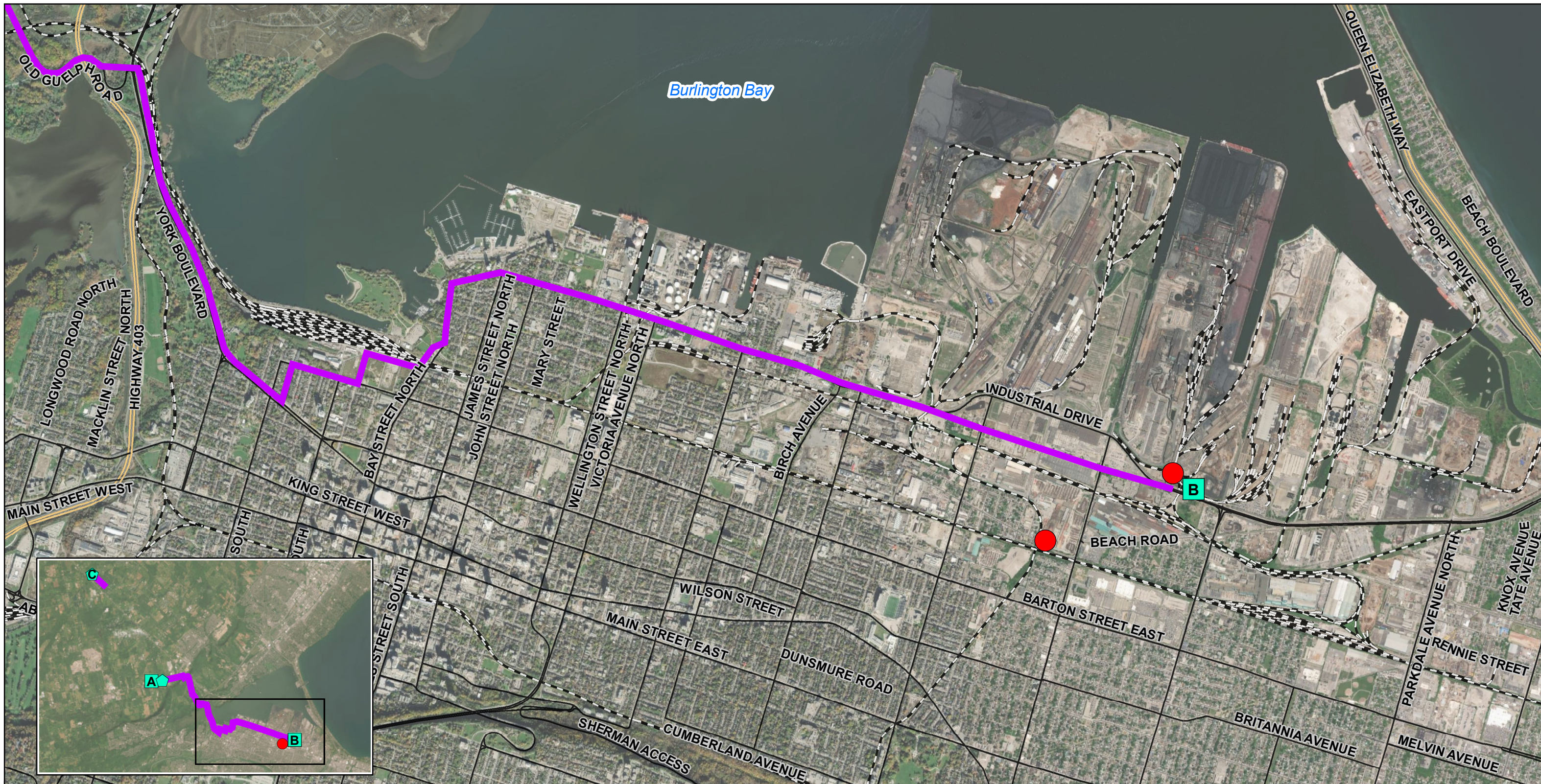
MAP DRAWING INFORMATION:
 DATA PROVIDED BY MNR, ENBRIDGE
 AERIAL PROVIDED BY ESRI

MAP CREATED BY: DU
 MAP CHECKED BY: AL
 MAP PROJECTION: NAD 1983 UTM Zone 17N

SCALE 1:25,000



PROJECT: 22-5167 STATUS: DRAFT DATE: 2023-02-17



- Proposed Station Rebuild
- ◀ Existing Stations
- Expressway / Highway
- Local / Street
- Proposed Station (Approximate)
- Alternative Route 2
- Major Roads
- - - Railway

ALTERNATIVE ROUTE 2

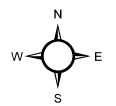
PAGE 3



MAP DRAWING INFORMATION:
 DATA PROVIDED BY MNR, ENBRIDGE
 AERIAL PROVIDED BY ESRI

 MAP CREATED BY: DU
 MAP CHECKED BY: AL
 MAP PROJECTION: NAD 1983 UTM Zone 17N

SCALE 1:25,000



PROJECT: 22-5167 STATUS: DRAFT DATE: 2023-02-21



- ◆ Existing Stations
- Alternative Route 2
- Expressway / Highway
- Major Roads
- Local / Street

ALTERNATIVE ROUTE 2

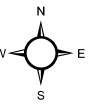
PAGE 4



MAP DRAWING INFORMATION:
 DATA PROVIDED BY MNRF, ENBRIDGE
 AERIAL PROVIDED BY ESRI

MAP CREATED BY: DU
 MAP CHECKED BY: AL
 MAP PROJECTION: NAD 1983 UTM Zone 17N

SCALE 1:10,000



PROJECT: 22-5167 STATUS: DRAFT DATE: 2023-02-17