

August 04, 2022

Expression of Interest and Binding Reverse Open Season

To meet a change in natural gas demand in the City of Hamilton, Enbridge Gas Inc. (“**Enbridge Gas**”) is pleased to announce this Expression of Interest and Binding Reverse Open Season for natural gas distribution service, which may require incremental facilities to serve this area (see attached map on page 3).

Enbridge Gas is considering alternatives that could provide additional natural gas capacity to the area. Depending on customer location, additional local reinforcement may also be required to serve new and existing customers in this area. The potential project is targeting incremental net demand from all sectors and is focused on the Large Volume commercial and industrial growth planned over the next ten years. Large Volume customers would include those consuming at least 50,000 m³/year or more. The purpose of this Expression of Interest and Binding Reverse Open Season is to gather Large Volume customer input to help prepare a forecast that identifies the location, timing and magnitude of customer growth. The information gathered through the Expression of Interest and Binding Reverse Open Season process will be used to evaluate and finalize alternatives necessary to meet the demands and timing identified (fall of 2025).

Concurrent with this process to express interest in new capacity, all existing contract rate class customers in the Area of Benefit (see attached map on page 3) will be offered the opportunity to “turn back” or de-contract their existing capacity via a concurrent Binding Reverse Open Season. Bids under the Binding Reverse Open Season will be subject to other customers contracting to take on that “turned back” capacity. In this way, Enbridge Gas will minimize the facilities required to serve incremental demand while optimizing any unwanted existing capacity. Customers should submit only one form for each of their sites. Customers contemplating an expansion on a new site/address should submit a form for each new site/address.

The development and scope of the project is contingent upon net market demand. Enbridge Gas will consider the size and location of all requests for new capacity and the requested turnback of existing capacity in designing the optimal facilities. The resulting proposed project may require Enbridge Gas to file a Leave to Construct application with the Ontario Energy Board (“OEB”).

Capacity would be available for the following services, depending on market support:

1. New firm distribution service
2. Conversion of existing interruptible distribution service to firm service
3. New interruptible distribution service

This Expression of Interest and Binding Reverse Open Season process closes and completed Expression of Interest Bid Forms and Binding Reverse Open Season Bid Forms are due, no later than **12:00 p.m. EDT on Friday September 16, 2022.**

Service Description and Details

1. The initial term of the customer's natural gas distribution contracts will be up to 20 years; and/or may include upfront payments for capacity and/or negotiated rates above currently OEB approved and posted, which do change over time. The facilities, rates and services included in this Expression of Interest will be subject to OEB approval and sufficient interest being received to justify a Project. The final scope of the proposed facilities will be determined using the demands from the forecast resulting from the Expression of Interest process and may change from those contemplated herein.
2. Submitting an Expression of Interest or Binding Reverse Open Season Bid Form:
If you wish to participate in this Expression of Interest or Binding Reverse Open Season, please complete, sign and return the respective Bid Form via email to Economic.Development@enbridge.com. Completed forms must be returned by email on or before 12 p.m. EDT on Friday September 16, 2022. The returned Bid Forms will be time-stamped by the date on the bidder's email.

Non-Binding Expression of Interest / Binding Reverse Open Season Process and Bid Forms

This process is designed to gauge interest in the Project and to assist Enbridge Gas with determining the optimal facility requirements to meet market needs and prepare an application to the Ontario Energy Board. Enbridge Gas will acknowledge receipt of all Bid Forms by email on or before the end of day on Monday September 19, 2022. Enbridge Gas in its sole discretion reserves the right to reject any and all bids received.

Any suggested contractual Condition(s) Precedent that the customer proposes should be clearly articulated and attached to the Bid Form and will be considered during the capacity allocation process.

Enbridge Gas anticipates allocating capacity on a preliminary and conditional basis to successful bidders by the end of November 2022. Successful bidders will then be asked to commit to the capacity by executing an Enbridge Gas Distribution Contract to formally support the need for the project.

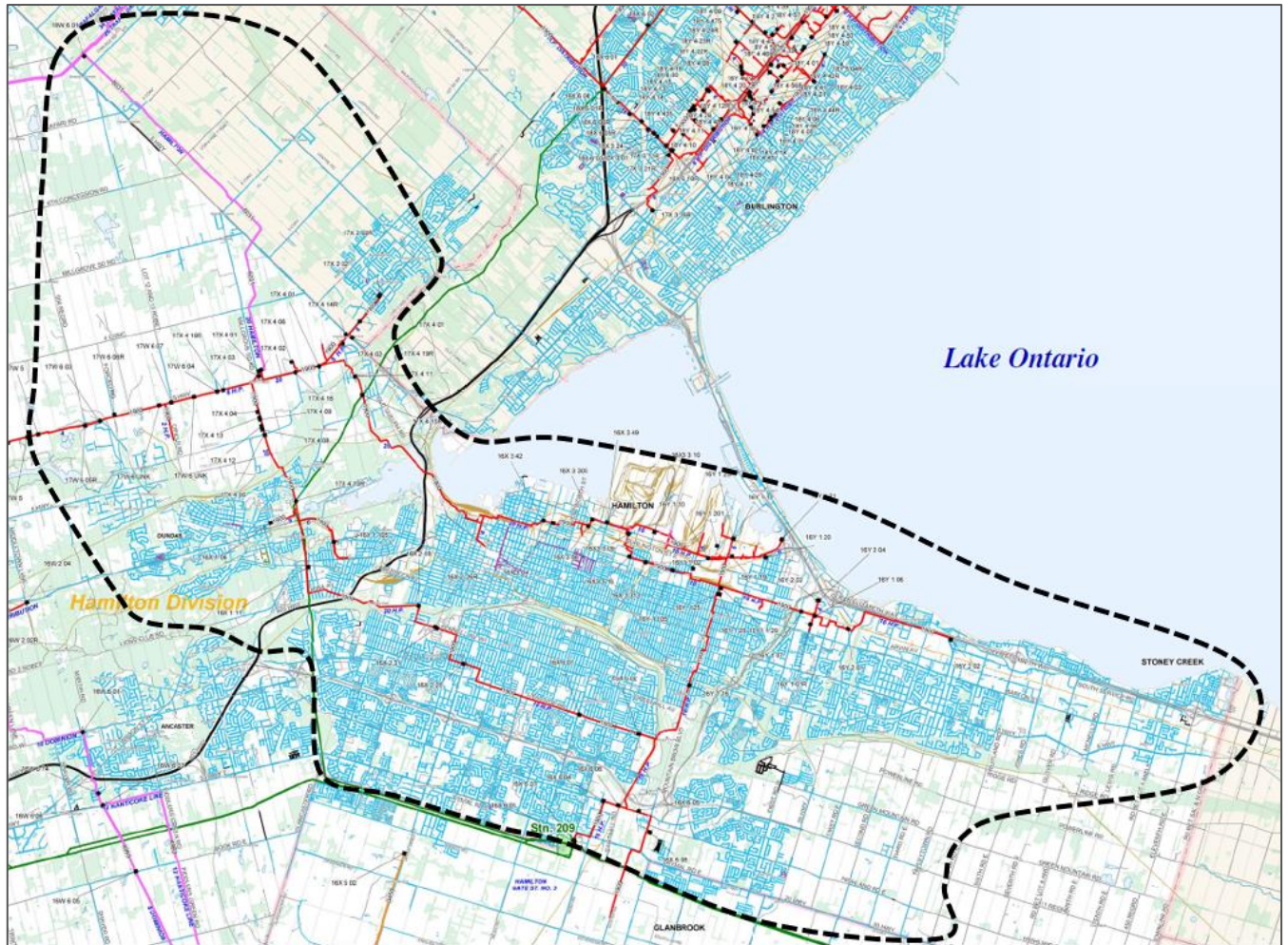
If you have any questions about the Expression of Interest or Binding Reverse Open Season, please contact your **Enbridge Gas account manager** or one of the following:

Matt Ciupka
Specialist, Economic Development
Cell: (519) 784-3919
Matt.Ciupka@Enbridge.com

Sutha Ariyalingam
Manager, Strategic & Power Markets
Cell: (647) 241-9969
Sutha.Ariyalingam@Enbridge.com

Map of proposed project service area

The map below outlines the area that is under consideration for a potential project to expand natural gas capacity. All potential large volume commercial or industrial customers considering developments within this area over the next five to ten years are encouraged to participate in this Non-Binding Expression of Interest / concurrent Binding Reverse Open Season.



Expression of Interest Non-Binding Bid Form:

Please complete, sign and return this Expression of Interest Non-Binding Bid Form (“**Bid Form**”) on or before **12:00 p.m. EDT on Friday September 16, 2022**, via email to Economic.Development@enbridge.com

Based on the responses received through this Bid Form and the concurrent Binding Reverse Open Season, Enbridge Gas will be able to define the optimal facilities required to support market needs. Customers may only submit one Bid Form per property. Bid Forms will be treated as confidential and only aggregated or non-identifiable data will be used to support any application to the Ontario Energy Board.

Property address: _____ SA: _____

- New FIRM natural gas needs.** An increase of firm gas needs at the above location (i.e. new equipment, new processes), or a new firm gas load as a result of a new build.

Year	2025	2026	2027	2028	2029	2030	2031	2032	2033	2034
Incremental (m ³ /h)										
Cumulative										

Ultimate incremental **firm** gas needs over planning horizon: _____ m³/hour (please provide details on estimated timing above)

- Conversion from interruptible distribution service to firm distribution service.** The amount of incremental firm distribution service needed net of any existing firm distribution service resulting from conversion of existing interruptible service to firm distribution service.

Year	2025	2026	2027	2028	2029	2030	2031	2032	2033	2034
Incremental (m ³ /h)										
Cumulative										

- New INTERRUPTIBLE natural gas needs.** An increase of interruptible gas needs at the above location (i.e. new equipment, new processes), or a new interruptible gas load as a result of a new build where customer is willing to accept the terms and conditions of interruptible service (for example periodic curtailment of gas distribution service).

Year	2025	2026	2027	2028	2029	2030	2031	2032	2033	2034
Incremental (m ³ /h)										
Cumulative										

Ultimate incremental **interruptible** gas needs (over planning horizon): _____ m³/hour (please provide details on estimated timing above)

Economic Development impacts related to incremental gas needs:

Number of net new jobs related to this expansion: _____ direct + _____ indirect = _____ total

Number of current jobs at risk if economical access to gas is not available: _____

Capital investment by Customer at the site conditional on economical access to gas: \$ _____

Please detail any other benefits from increased access to gas (lower GHG emissions or costs by displacing an alternative energy source etc.): _____

Total Incremental distribution service capacity (New firm + conversion of Interruptible): _____ m³/hour.

Total job impacts related to economical access to natural gas (total new + current “at risk”): _____ jobs



Customer Conditions Precedent: If the Customer's Expression of Interest is subject to Conditions Precedent, (please attach a separate page with details if space insufficient):

Customer's legal name: _____

Name of Authorized Representative: _____
Please Print Signature

Phone: _____ Email: _____

Dated this ____ day of _____, 2022

