

ENBRIDGE GAS DISTRIBUTION INC. RESPONSE TO  
CONSUMERS COUNCIL OF CANADA INTERROGATORY #20

INTERROGATORY

4. What are the alternatives to the proposed facilities? Are any alternatives to the proposed facilities preferable to the proposed facilities?

Issue: A.4-CCC-20

Reference: Reference: A/T3/S5, pgs. 6-8, pg. 11 – Peak Demand

- a) Please revise Figures 2 through 4 to show the trend line from the period 2004 through 2012.
- b) Please comment on which is likely to be more representative of future trends and why – the longer trend 1999-2012 or the shorter trend 2004-2012.
- c) Please revise Table 2 to show the last two years of actual data (2011 and 2012 if available).

RESPONSE

- a) Revised figures are provided below.

Figure 2: Normalized Peak Day Demand – Central Weather Zone (PJs)

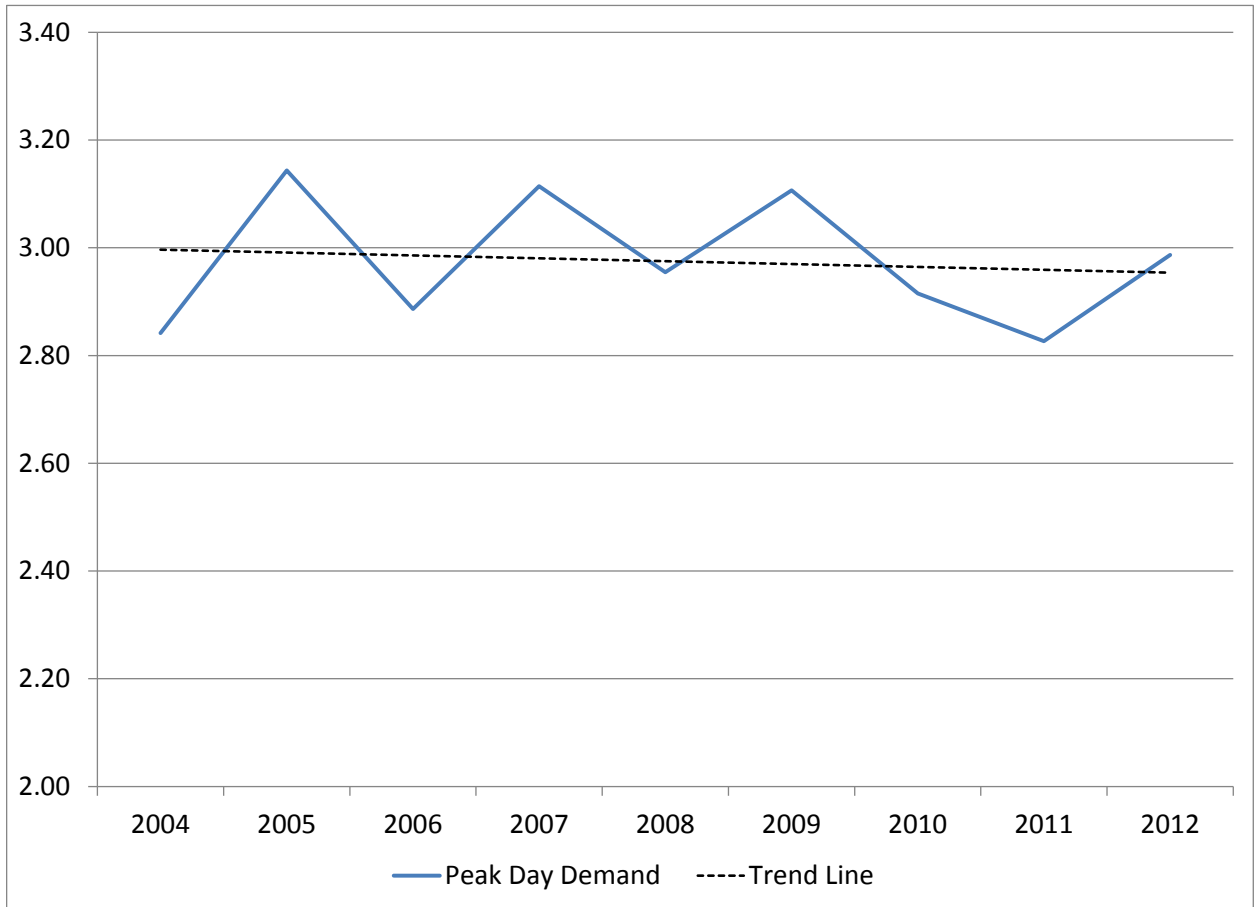


Figure 3: Normalized Peak Day Demand – GTA Project Influence Area (PJs)

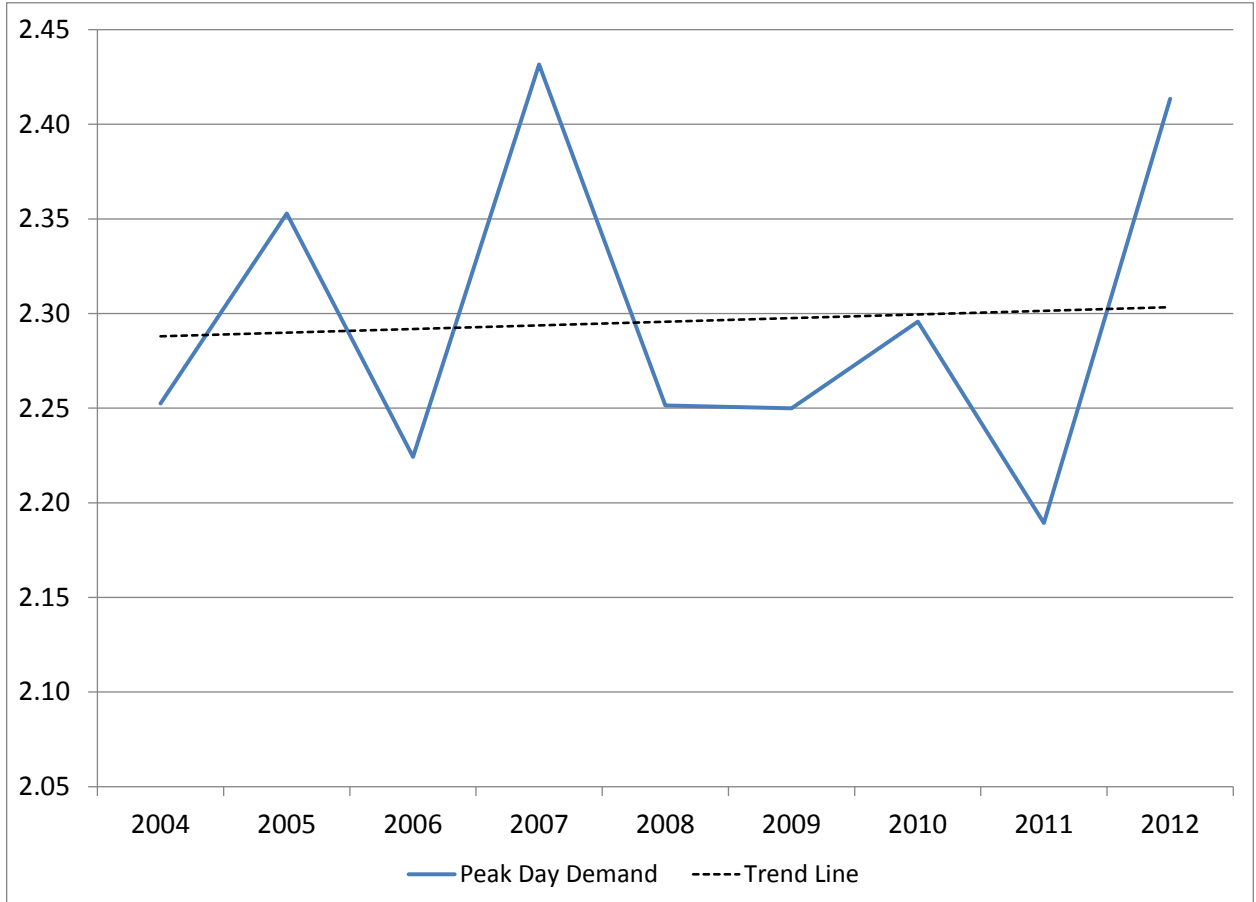
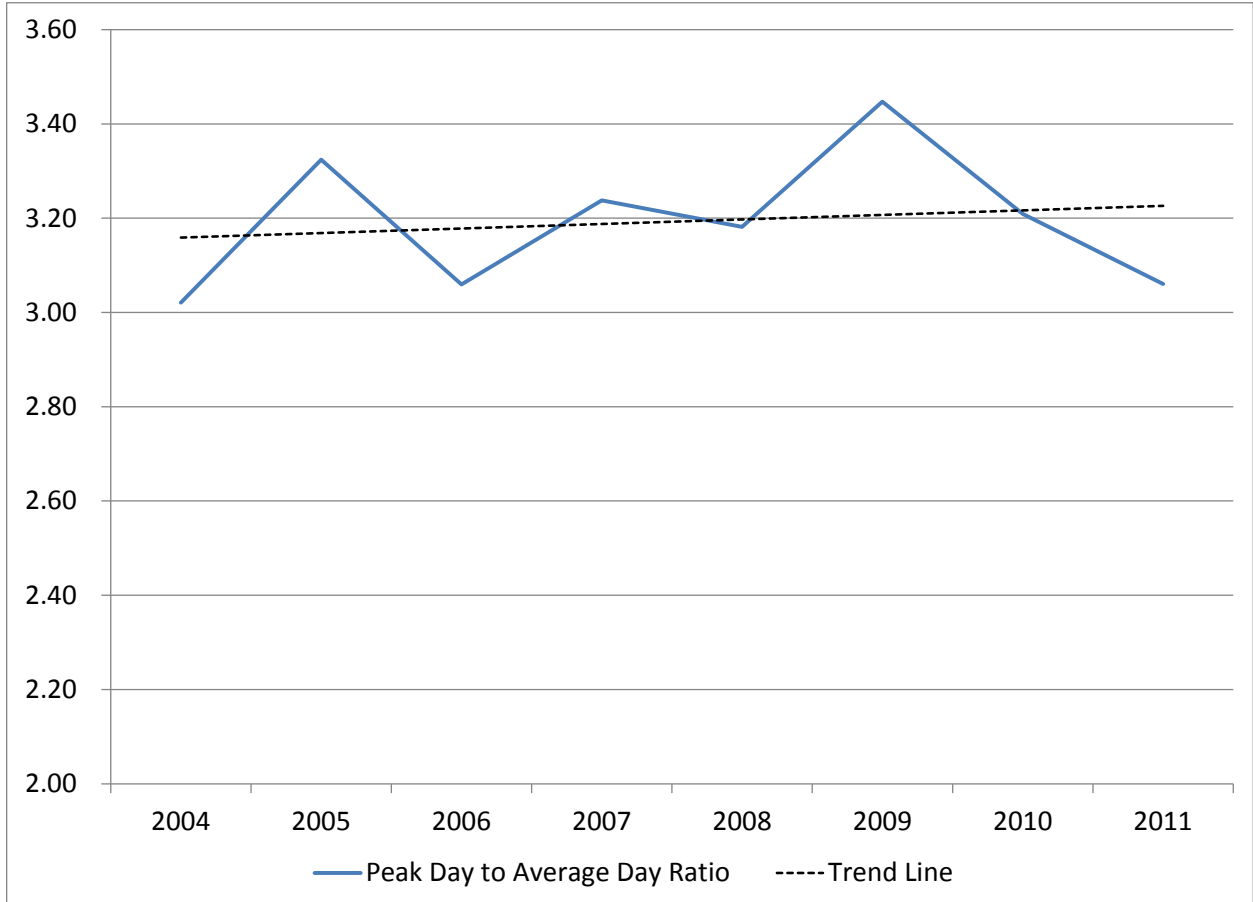


Figure 4: Ratio of Peak Day Demand to Average Day Demand – Central Weather Zone



- b) Longer term trends are more likely to be representative of future trends. Longer term trends remove the noise associated with utilizing a shorter sample period. For example, the longer term trends presented in Exhibit A, Tab 3, Schedule 5 better represent the growth experienced in the number of customers Enbridge serves along with fluctuations in the economy that have been experienced over that same period which includes periods of both economic growth and contraction.
- c) Historical peak day supply demand balances for the requested years are not relevant as they were derived utilizing a different Design Day Criteria than that which is currently approved by the Board. The relevant comparison is what Enbridge would have to contract for to meet its peak day requirements with and without the GTA Project Facilities approved. Please refer to Exhibit A, Tab 3, Schedule 5, page 28, Table 1 for three peak day contracting scenarios related to the GTA Project. These scenarios outline peak day requirements for 2016 utilizing the updated Design Day Criteria approved in EB-2011-0354.

Witness: J. Denomy