

# Enbridge Gas Webinar

---

Dec. 3, 2020

# Welcome & safety message

---

**Andrea Seguin**

Director, Storage and Transportation Sales

# Winter walking safety

- Wear appropriate footwear with a slip-resistant sole.
- Use special care when entering and exiting vehicles.
- Walk in designated walkways and look ahead when you walk.
- Extend your arms to the side to maintain balance.
- Keep your hands out of your pockets and use a handrail when possible.



# On the agenda



Winter operations update	Daryl Zimmer
Improving Data Reporting	Jennifer Woodall
Unionline rebranding	Ginny Hawken
Dawn to Parkway updates	Paul Dhaen
Closing remarks	Andrea Seguin

# Operations update

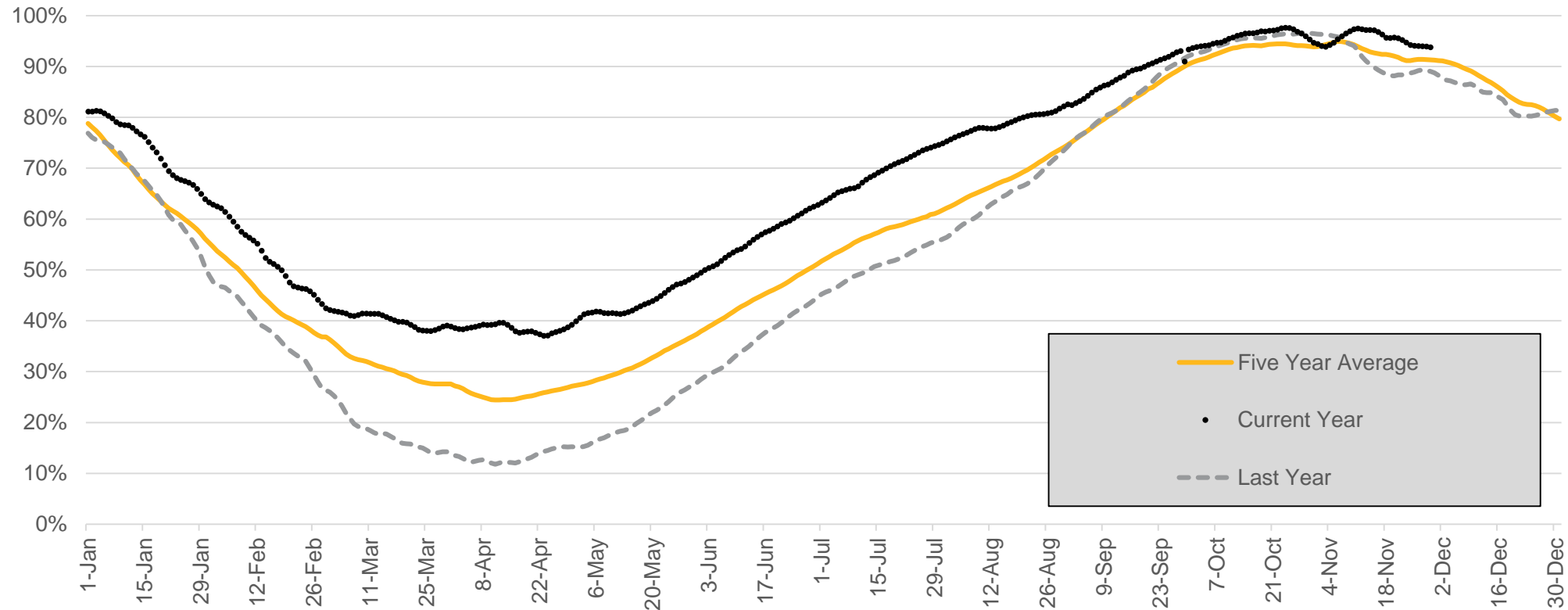
---

**Daryl Zimmer**

Account Manager, Storage and Transportation Sales

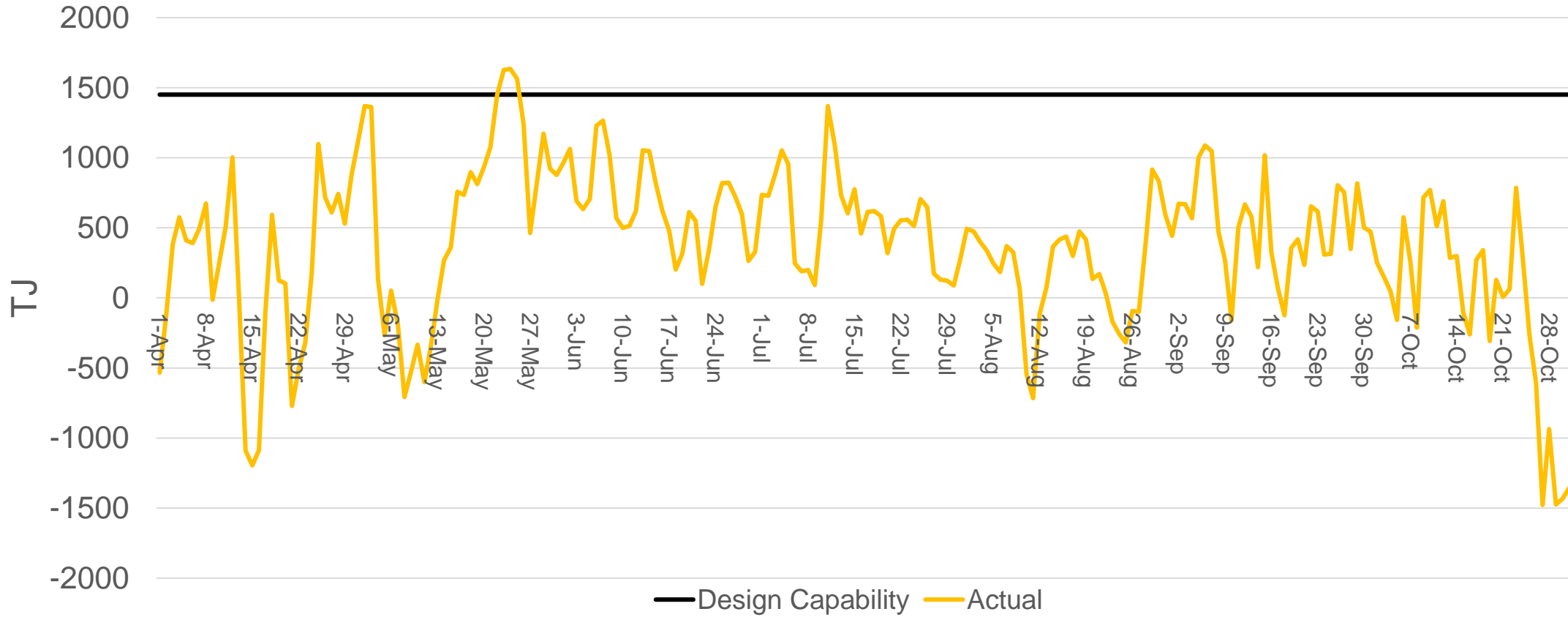
# Summer storage

## Combined storage percentage full



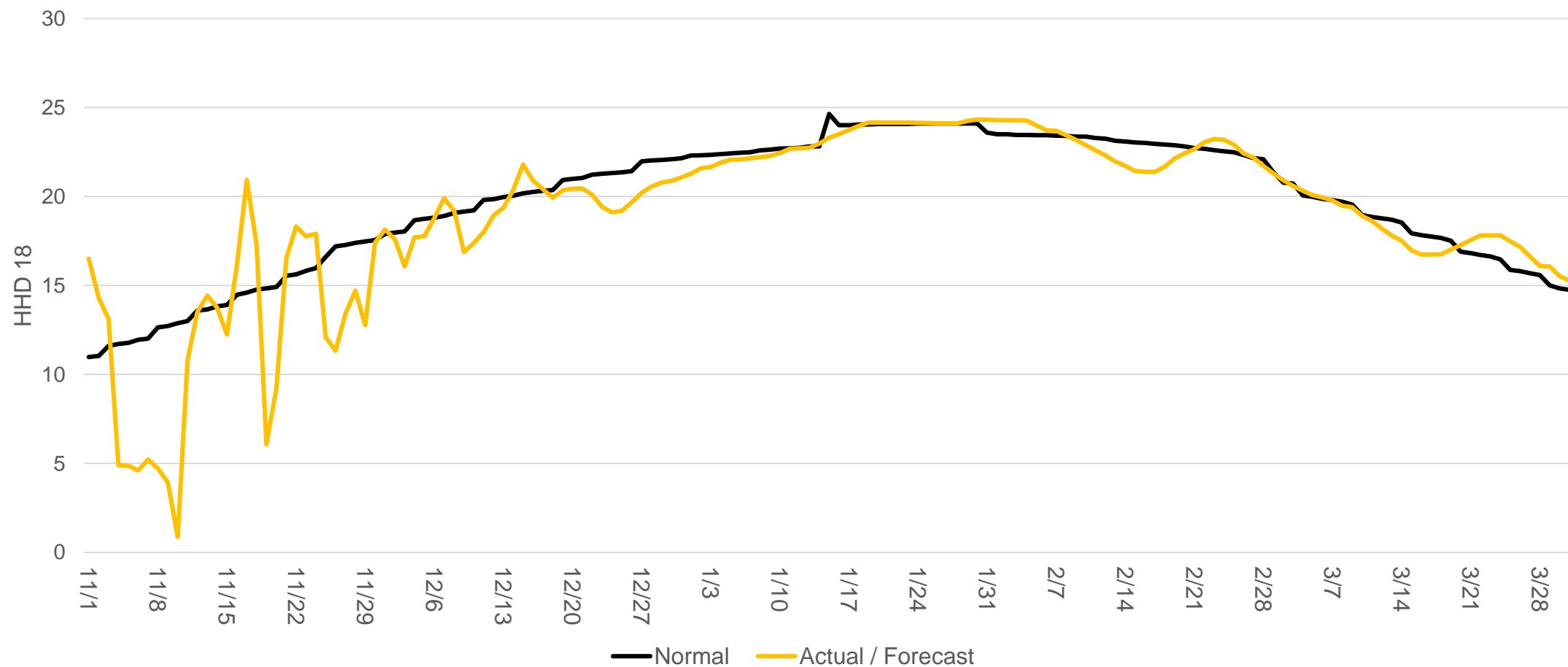
Regardless where the injection season starts, inventory levels sync up by Oct. 1.

# Summer storage Dawn activity



Many factors impact decision to turn Yellow Light on

# EGI merged weather outlook





# Improving data reporting

---

**Jennifer Woodall**

Account Manager, Storage and Transportation Sales

# What's new in data reporting

- Twice a day updates to the Gas Day Summary Report
- Twice a month updates to the Storage Inventory Report
- Historical storage inventory data available on our website



# Communications improvements

- Created the “We are listening” campaign when sharing any Unionline upgrades or enhancements
- Sharing information proactively through additional customer webinars



# Unionline rebrand

---

**Ginny Hawken**

Account Manager, Storage and Transportation Sales

Coming in 2021



# Enerline

New name, new Enbridge branding, same functionality

# Dawn Parkway update

---

**Paul Dhaen**

Manager, Storage and Transportation Sales

# 2021 Dawn Parkway Expansion Project

- Nov. 1, 2019: Filed application with the OEB (EB-2019-0159)
- May 4, 2020: Requested a temporary adjournment to evaluate the impact of COVID-19 on demands
- Oct. 22, 2020: Submitted a withdraw of our application with the OEB
  - Reassess customer demand on the Dawn Parkway System and determine if facilities will be required in the future



# 2023/2024 Dawn Parkway Open Season



- Enbridge Gas issued a new capacity open season on the Dawn Parkway System for capacity beginning Nov. 1, 2023 or Nov. 1, 2024.
- The Open Season closes Jan. 15, 2024.





# Closing remarks

---

**Andrea Seguin**

Director, Storage and Transportation Sales