

# Legal Notice

## Forward-Looking Information



This presentation includes certain forward-looking statements and information (FLI) to provide customers, potential investors and stakeholders of Enbridge Gas Inc. (Enbridge or the Company) with information about Enbridge and its subsidiaries and affiliates, including management's assessment of their future plans and operations, which FLI may not be appropriate for other purposes. FLI is typically identified by words such as "anticipate", "expect", "project", "estimate", "forecast", "plan", "intend", "target", "believe", "likely" and similar words suggesting future outcomes or statements regarding an outlook. All statements other than statements of historical fact may be FLI. In particular, this presentation contains FLI pertaining to, but not limited to, information with respect to the following: strategic priorities; the expected supply of, demand for and prices of natural gas and competitive energy sources, and the continued advantages of and demand for natural gas; expected performance and outlook of the Company's businesses; announced projects and projects under construction, including integrity and maintenance projects; future growth, expansion, reinforcement and enhancement projects; renewable natural gas and power to gas projects; project execution, including capital costs, expected construction and in service dates and regulatory approvals, and the benefits thereof; expected future decisions and actions of regulators and courts, and the timing and impact thereof; and weather.

Although we believe that the FLI is reasonable based on the information available today and processes used to prepare it, such statements are not guarantees of future performance and you are cautioned against placing undue reliance on FLI. By its nature, FLI involves a variety of assumptions, which are based upon factors that may be difficult to predict and that may involve known and unknown risks and uncertainties and other factors which may cause actual results, levels of activity and achievements to differ materially from those expressed or implied by the FLI, including, but not limited to, the following: the COVID-19 pandemic and the duration and impact thereof; the expected supply of and demand for natural gas and other commodities and sources of energy; prices for natural gas and alternative sources of energy; exchange rates; inflation; interest rates; the availability of capital on satisfactory terms; availability and price of labour and construction materials; operational reliability and performance; customer and regulatory approvals; maintenance of support and regulatory approvals for projects; anticipated in-service dates; weather; the realization of anticipated benefits and synergies of transactions; governmental legislation; litigation; changes in regulations applicable to our businesses; cost recovery regimes; political decisions; economic and competitive conditions; and changes in tax laws and tax rates. We caution that the foregoing list of factors is not exhaustive. Additional information about these and other assumptions, risks and uncertainties can be found in applicable filings with Canadian securities regulators (including the most recently filed annual management's discussion and analysis (MD&A) of the Company and any subsequently filed MD&A, as applicable). Due to the interdependencies and correlation of these factors, as well as other factors, the impact of any one assumption, risk or uncertainty on FLI cannot be determined with certainty.

Except to the extent required by applicable law, we assume no obligation to publicly update or revise any FLI made in this presentation or otherwise, whether as a result of new information, future events or otherwise. All FLI in this presentation and all subsequent FLI, whether written or oral, attributable to Enbridge or persons acting on its behalf, are expressly qualified in its entirety by these cautionary statements.

# Enbridge Gas customer meeting

---

Sept. 14, 2020

# Welcome & safety message

---

**Andrea Seguin**

Director, Storage and Transportation Sales



# Agenda



<b>Topic</b>	<b>Speaker</b>
Welcome and safety message	Andrea Seguin
President's address	Cynthia Hansen
Opening remarks	Jim Redford
Operations update	Clancy O'Hara
Gas Supply update	Jason Gillett
Business Development update	Hilary Thompson
Q&A	
Closing remarks	Andrea Seguin

# Carbon monoxide: inspect and detect

- Carbon monoxide is the ‘silent killer’.
- Prevention:
  - Use a registered contractor to inspect and service all fuel-burning appliances and vents in your home annually.
  - Test CO alarm monthly.
  - Know the symptoms of CO poisoning.



CO alarms save lives, but only if they are in good working order

# President's address

---

**Cynthia Hansen**

Executive Vice President & President, Enbridge Gas Inc.



# Opening remarks

---

**Jim Redford**

Vice President, Energy Services



# Enbridge Gas Storage & Transportation leadership



Vice President,  
Energy Services

**Jim Redford**



Director,  
S&T Sales

**Andrea Seguin**



Director,  
Business  
Development

**Hilary Thompson**



Director,  
Gas Control &  
Management

**Clancy O'Hara**



Director,  
Gas Supply

**Jason Gillett**



# Storage and Transportation Sales



**Paul Dhaen**  
Manager  
S&T Sales



**Daryl Zimmer**  
Advisor  
S&T Account Manager



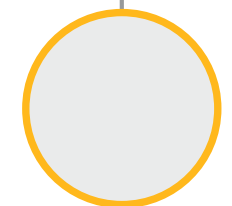
**Jennifer Woodall**  
Sr Advisor  
S&T Account Manager



**Jennifer Clements**  
Advisor  
Marketing

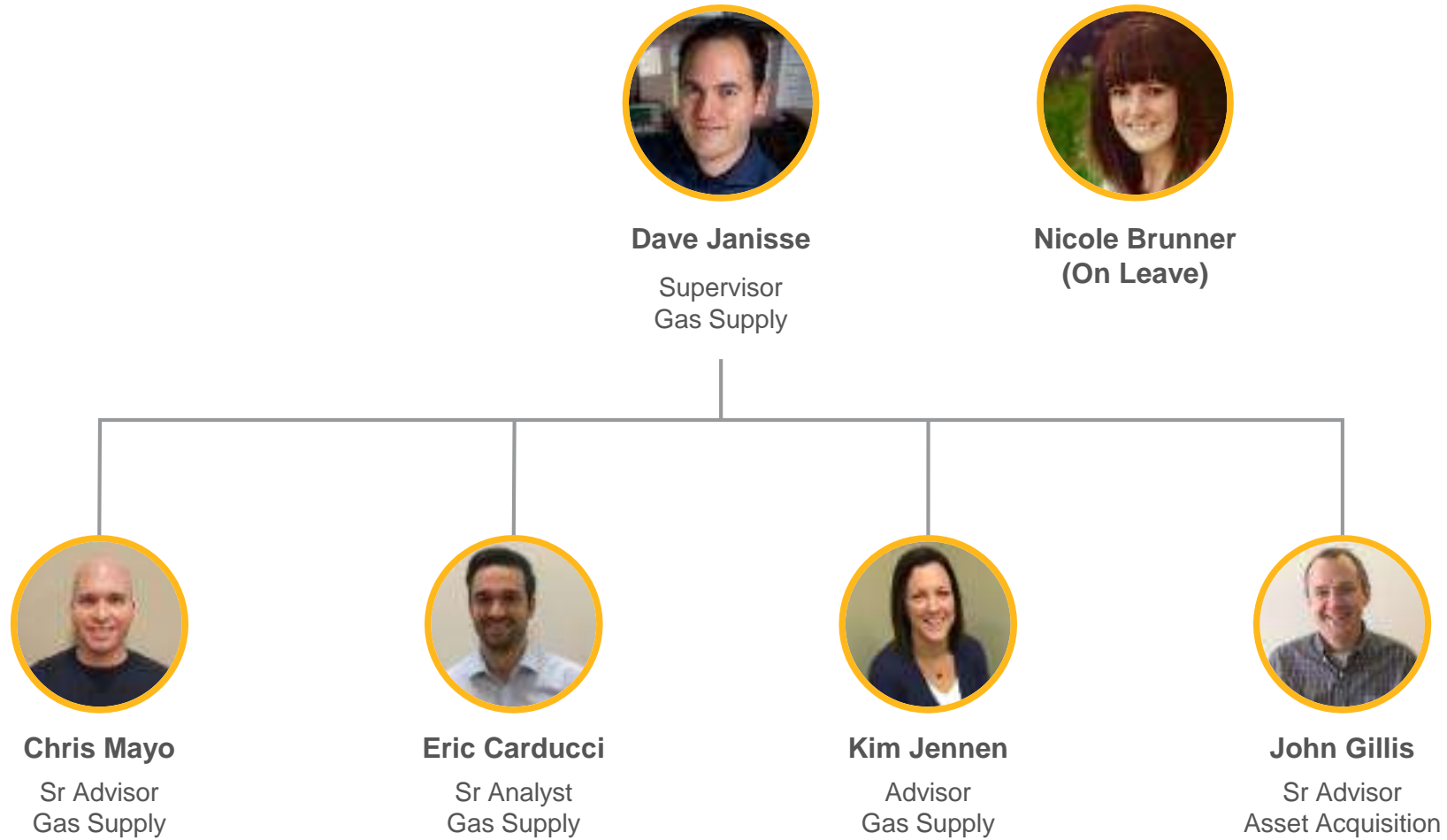


**Ginny Hawken**  
Advisor  
Power/Utility Sector



**Vacant**

# Gas Supply



# Taking action on feedback



# Operations update

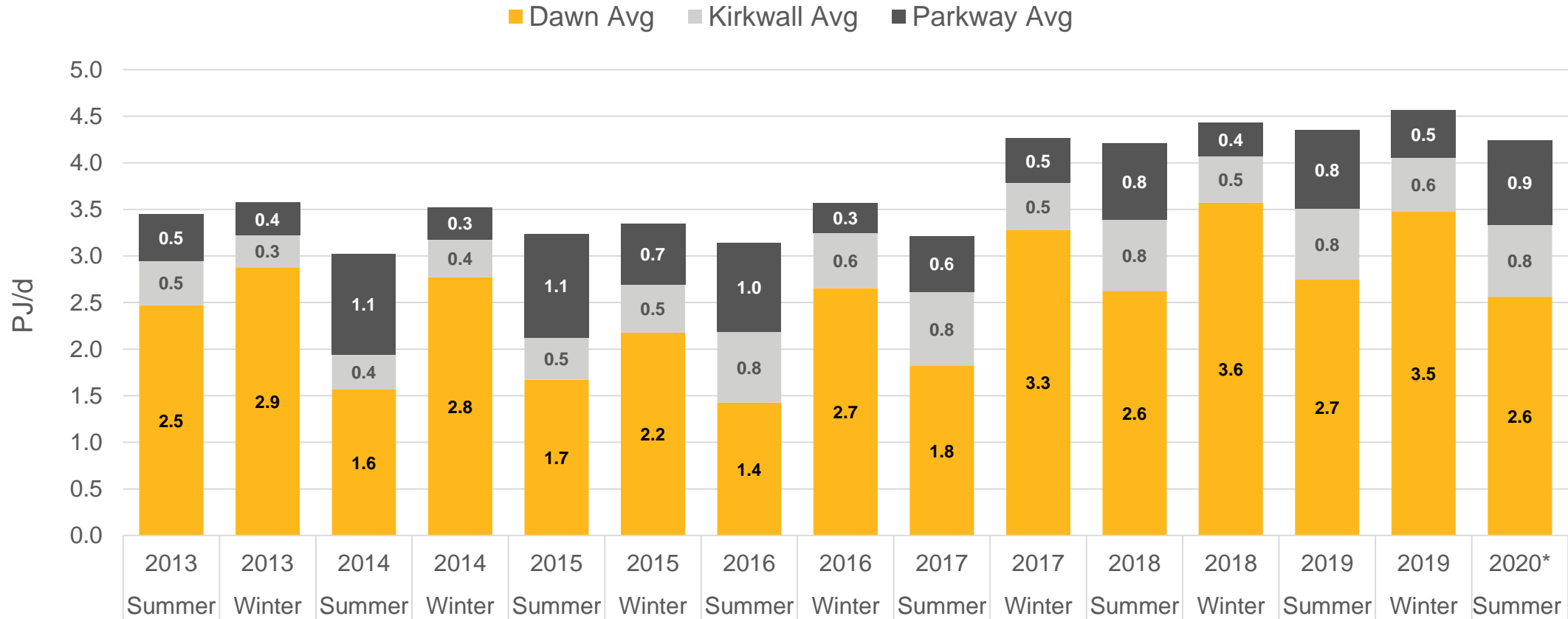
---

**Clancy O'Hara**

Director, Gas Control and Management

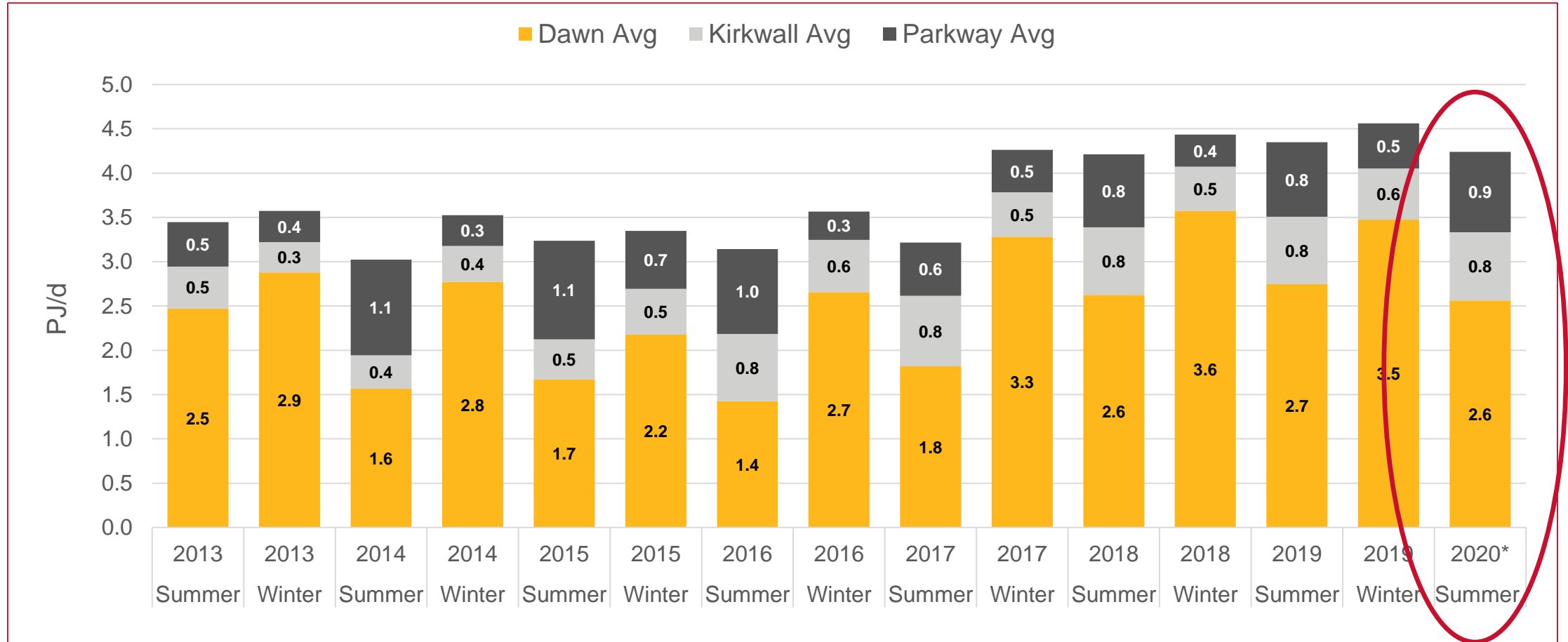


# Receipts by season



No material change Summer 2020 compared to Summer 2019

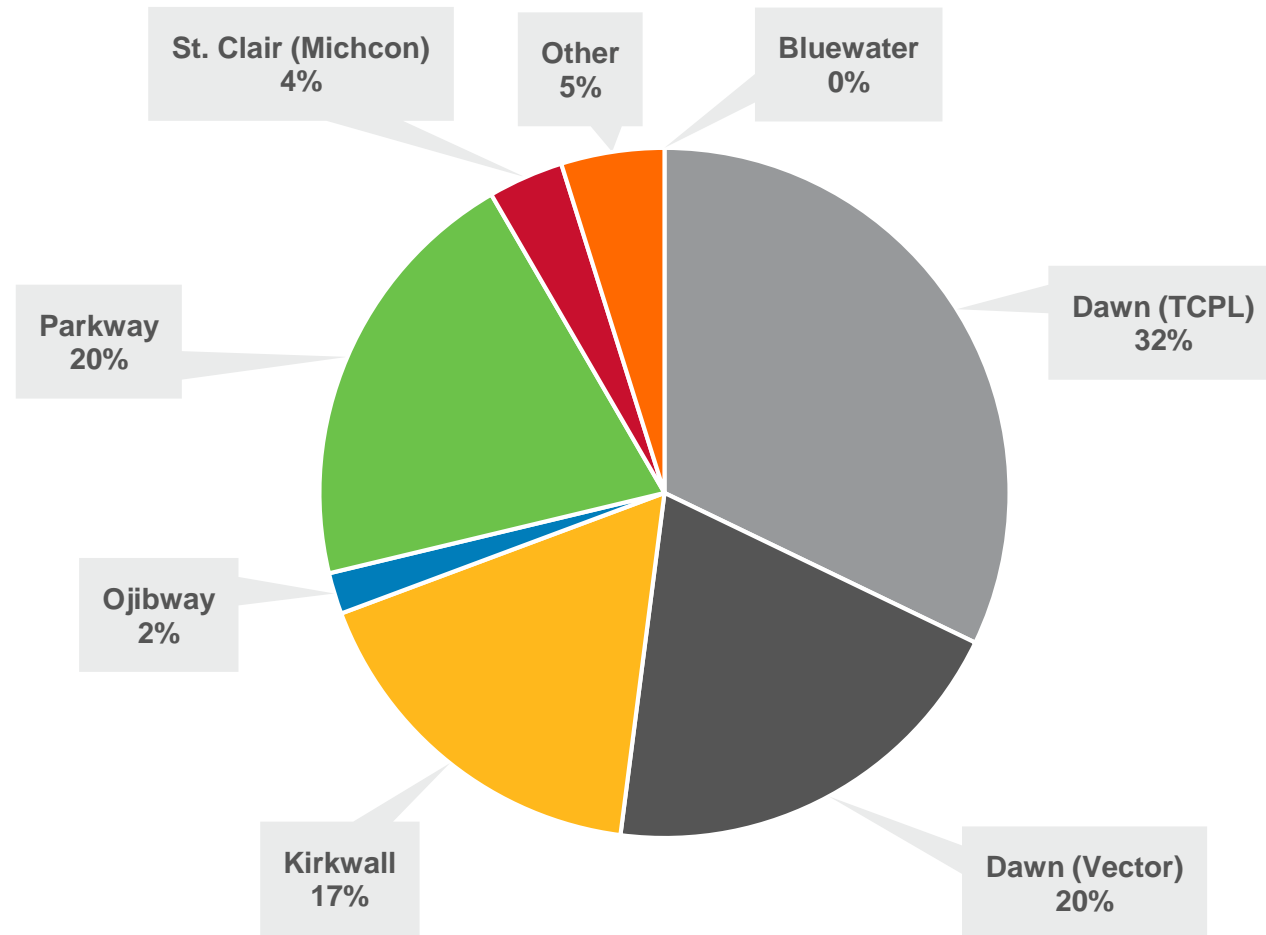
# Receipts by season



No material change Summer 2020 compared to Summer 2019

# Receipts by pipeline: Summer 2020

- Bluewater
- Dawn (TCPL)
- Dawn (Vector)
- Kirkwall
- Ojibway
- Parkway
- St. Clair (Michcon)
- Other



# 2020 Construction and outage maintenance



## Integrity: pigging and digs

- NPS 34 Dawn-Parkway Pigging
- NPS 42 Dawn-Parkway integrity digs
- NPS 20 Panhandle integrity
- NPS 12 Cornwall Pipeline Integrity digs



## Replacements and expansion

- Don River Crossing
- Victoria Square Gate meter modifications (Markham)
- Blackhorse Gate Rebuild (Niagara)
- NPS 12 Owen Sound line expansion 35 km
- NPS 26 & 34 replacement under Trafalgar Road (Milton)

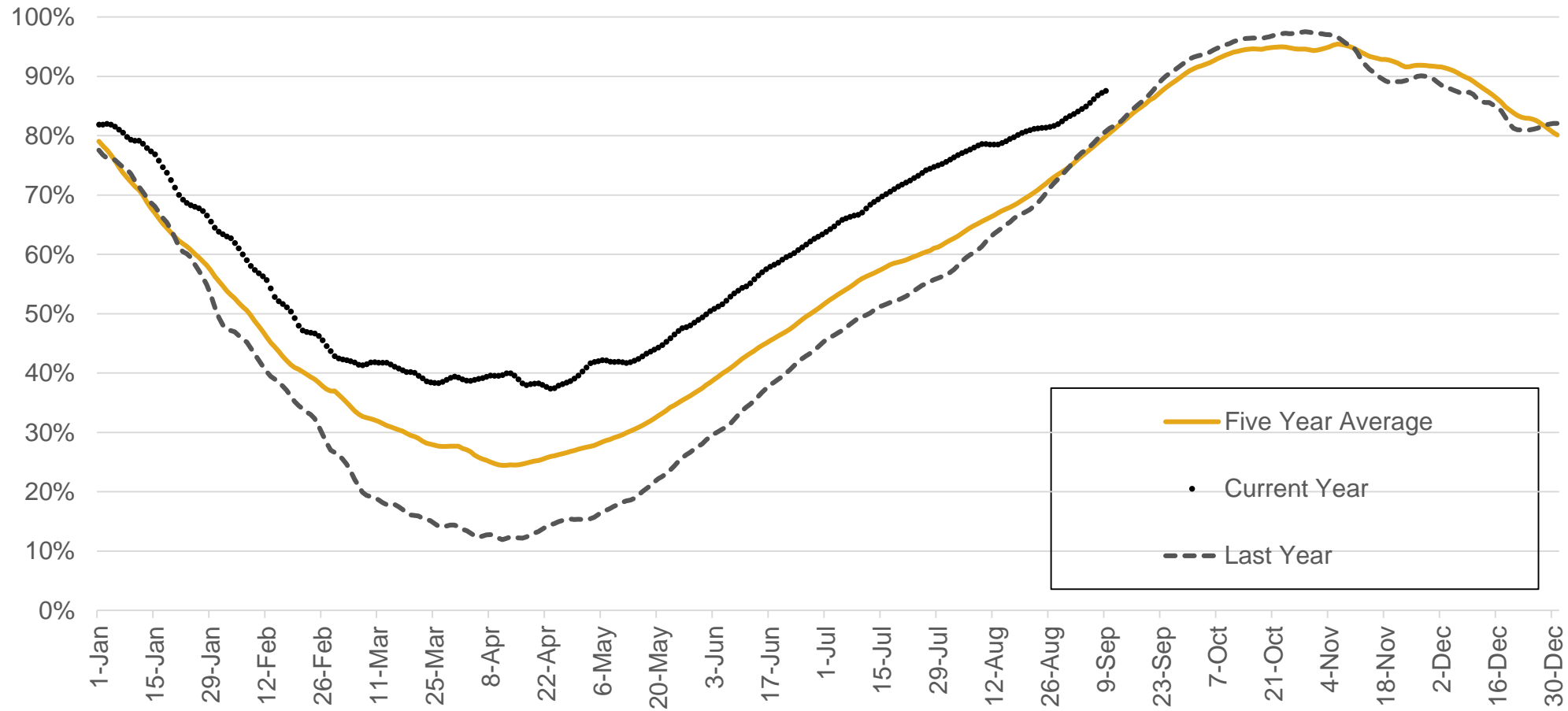


# 2020 Operations: Red Lake forest fire



Safety and reliability

# Storage levels



# Winter weather monthly outlook



	Forecast HDD	Normal	Variance	% Var
<b>November</b>	462	427	35	8%
<b>December</b>	650	627	23	4%
<b>January</b>	737	725	12	2%
<b>February</b>	634	644	-10	-2%
<b>March</b>	548	555	-8	-1%
<b>Total</b>	<b>3,032</b>	<b>2,979</b>	<b>53</b>	<b>2%</b>

Early weather forecast 2% colder than normal

# Customer Service



## Nominations

[Name Change](#) [View All Parties](#)

**Deadlines**

Window	Time Remaining	Next

**Operational Status**

Date	Status
Sep 9, 2020	G
Sep 10, 2020	G
Sep 11, 2020	G
Sep 12, 2020	G

**Operational Status**

- G Sep 9, 2020
- G Sep 10, 2020
- G Sep 11, 2020
- G Sep 12, 2020

[More info](#)

**Operational Status**

Click a light at a segment to view more detailed information.

	September 09, 2020	September 10, 2020	September 11, 2020	September 12, 2020
<b>Transportation</b>				
<b>Operational Status</b>	G	G	G	G
<b>Parkway</b>				
From Dawn	G	G	G	G
To Dawn	G	G	G	G
<b>Kirkwall</b>				
From Dawn	G	G	G	G
To Dawn	G	G	G	G
From Parkway	G	G	G	G
To Parkway	G	G	G	G
<b>Ojibway</b>				
From Dawn	G	G	G	G
To Dawn	G	G	G	G
<b>St. Clair</b>				
From Dawn	G	G	G	G
To Dawn	G	G	G	G
<b>Bluewater</b>				
From Dawn	G	G	G	G
To Dawn	G	G	G	G
<b>Vector</b>				
From Dawn	G	G	G	G
To Dawn	G	G	G	G



We are listening!

In response to customer feedback, Enbridge Gas has been working on a series of improvements to Unionline. As we implement these improvements over the next several months, we will share the changes that may make transacting on Unionline easier for you.

## Unionline Support

Unionline@Enbridge.com

519-436-5446

## GMS Nominations Support

ONTUGLGMS@Enbridge.com

519-436-4545

Operational Status notification subscriptions: [Email Notification Services Subscription Form](#)

# Gas Supply update

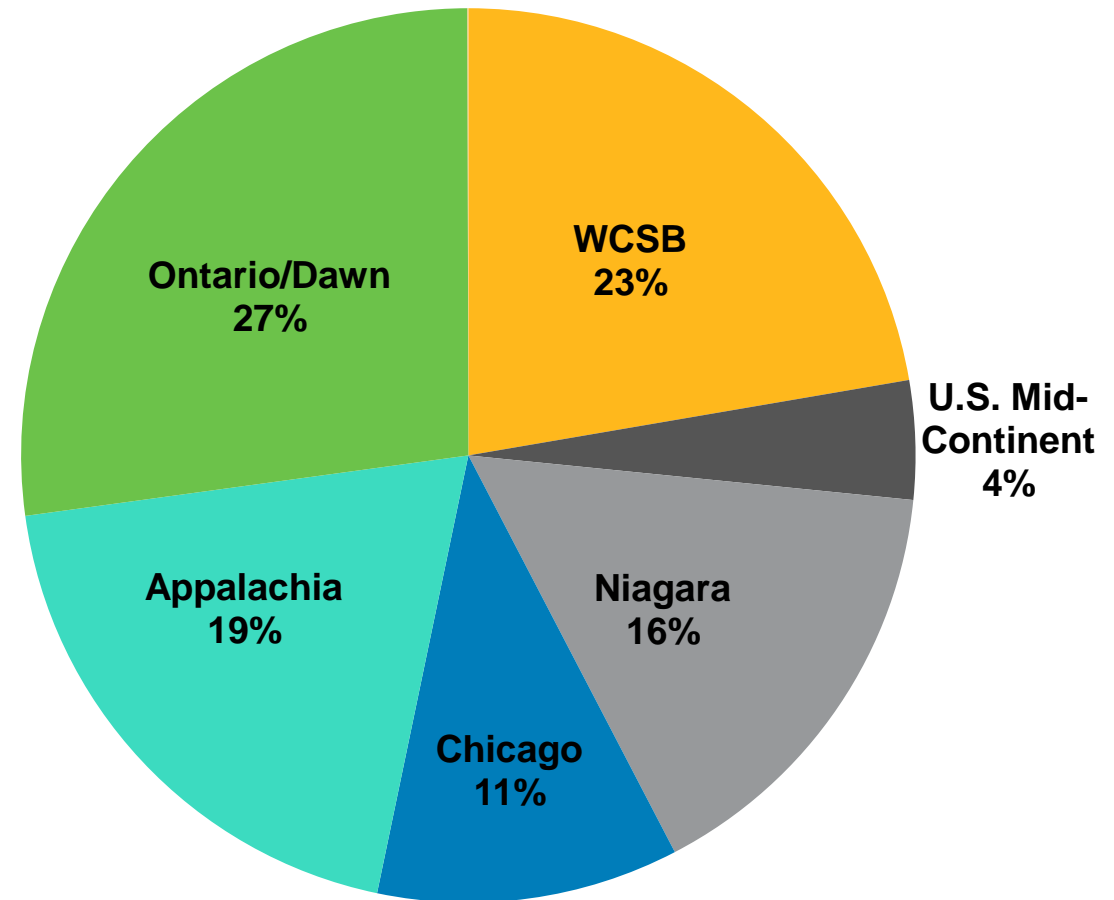
---

**Jason Gillett**  
Director, Gas Supply



# Combined portfolio

- Almost 3.8 million customer connections served (12 million customers).
- Over 90% of utility customers rely on system gas supply.
- 510 PJ of system gas purchased annually.



Maximizing customer value through a reliable and diverse of supply portfolio

# Continuing to evolve and integrate

## Commodity purchases

- Gas purchases merged in to one process for RFPs and direct purchases.
- Continue to hold individual NAESBs for each utility-transaction counterparty confirmed at the time of deal.
- Aligning background systems to further integrate and move towards nominating and contracting as one.

## Regulatory work

- Now presenting significant information about how we plan and execute our responsibilities in the regulatory forum annually.



As we change, customer service is our continuing priority

# “Greening” the gas supply



## Voluntary Renewable Natural Gas Program

- Enbridge Gas has filed a program proposal with the OEB, whereby customers volunteer to pay a premium to enable the company to procure Renewable Natural Gas.
- Pending approval, Enbridge Gas will be procuring RNG in 2021 to meet program requirements.

## Power to Gas Hydrogen Procurement

- Enbridge Gas has partnered with a Hydrogenics plant in Markham to convert excess power to hydrogen.
- Gas Supply team will procure hydrogen as part of our supply for system customers beginning in 2021.

Gas supply is working to meet evolving customer needs.



# Business Development update

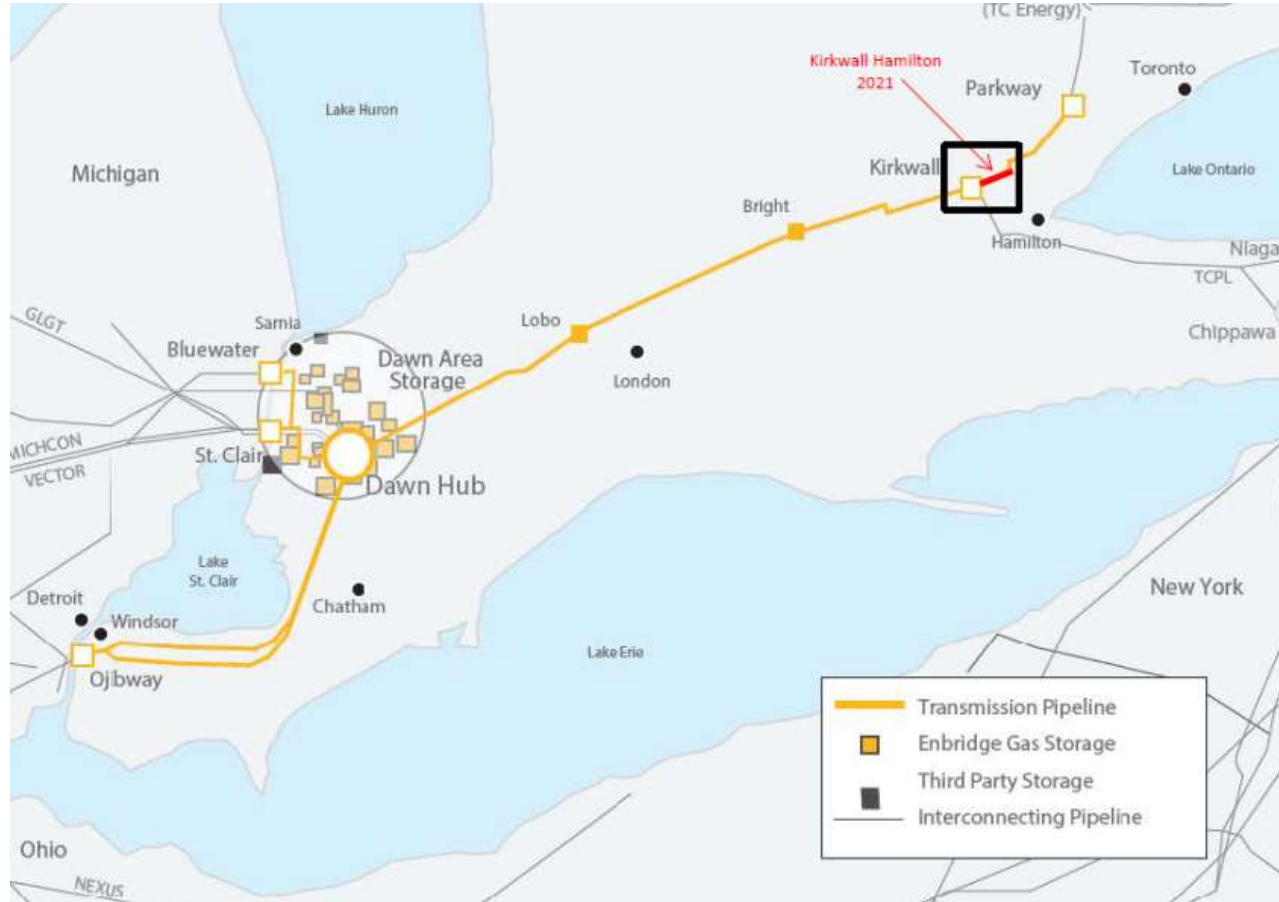
---

**Hilary Thompson**

Director, Business Development

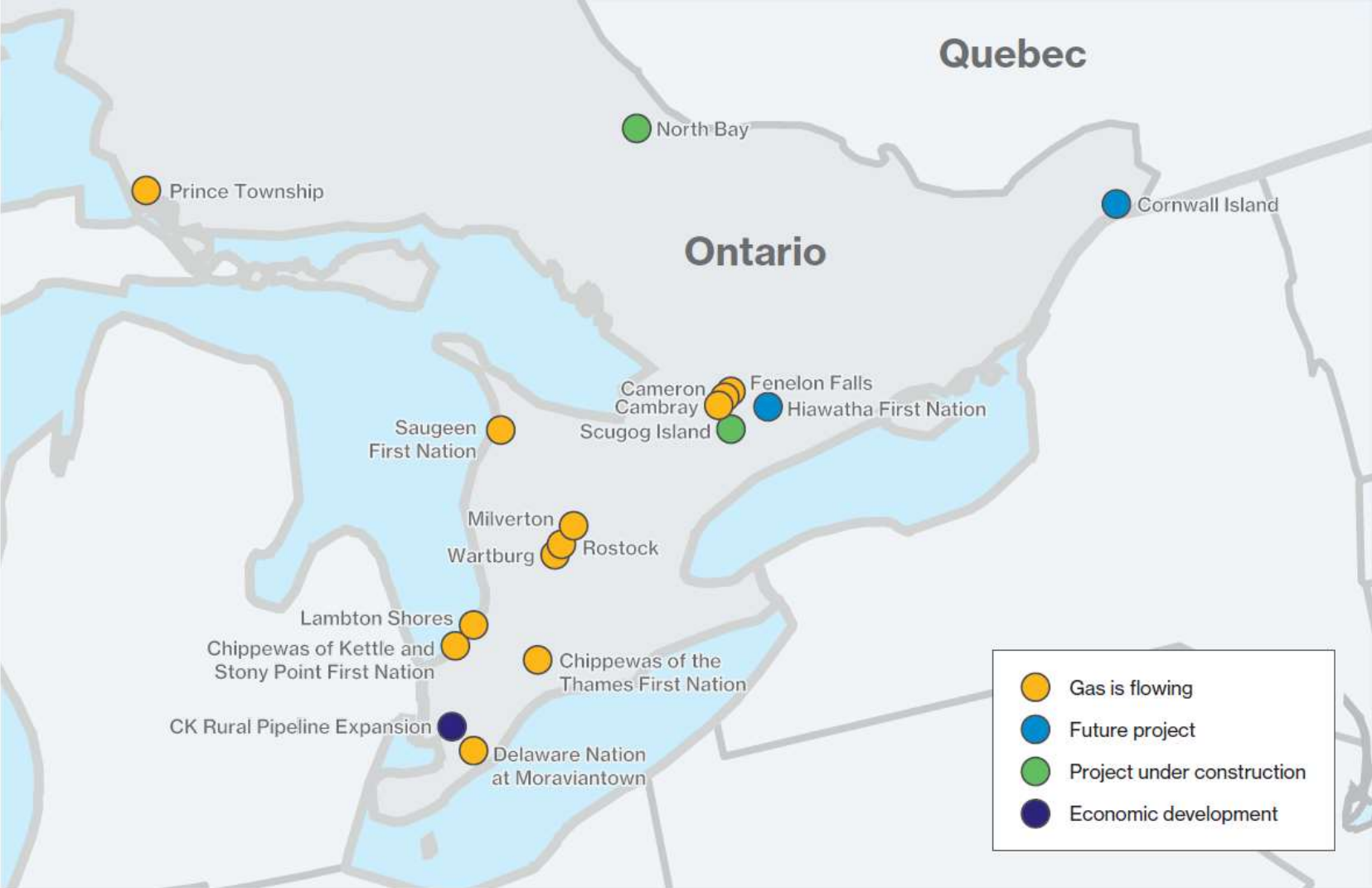


# Dawn Parkway expansion project



- Scope
  - 10.2 km NPS 48 pipeline loop between Kirkwall Valve Site and Hamilton Gate Station
- Capacity
  - 92,174 GJ/d (TBD-on in-service year required)
- Project update
  - Currently working through post COVID demand forecast
  - Application is on hold at the OEB

# Community expansion

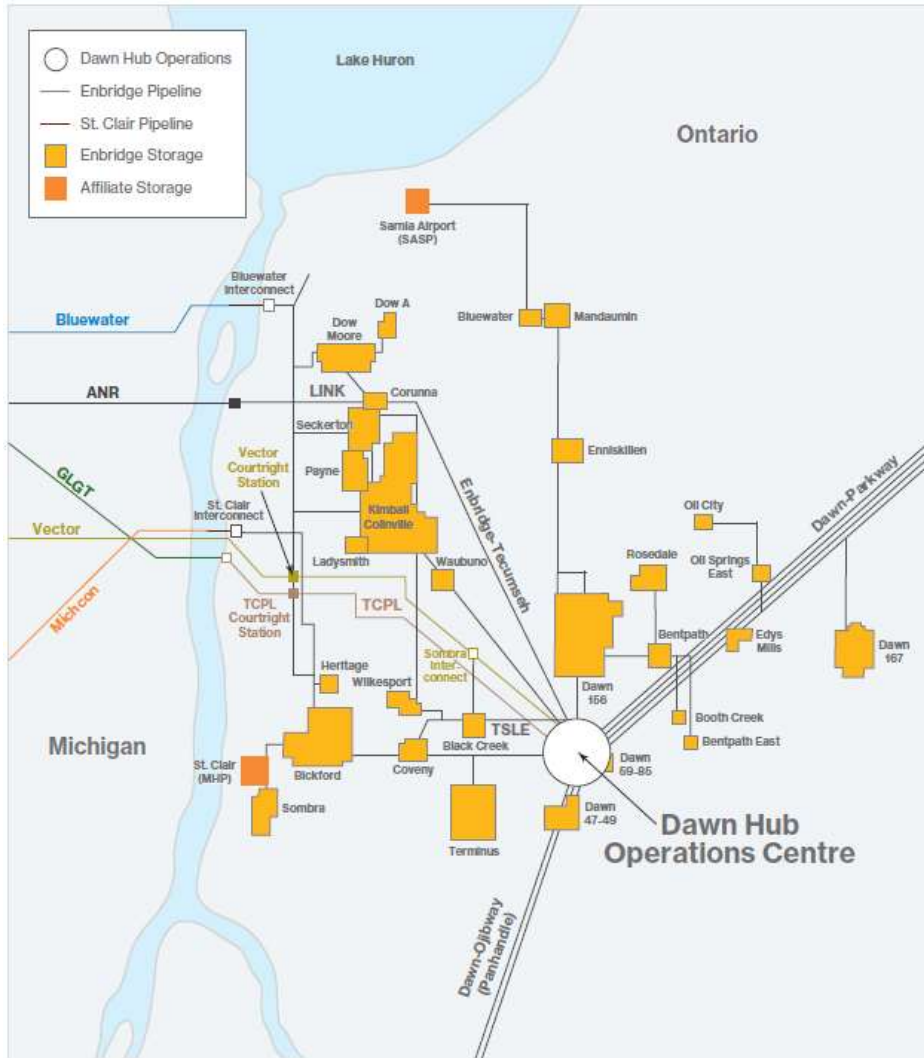


# 2020 Owen Sound reinforcement project



- Scope
  - 34.2 km NPS 12 pipeline loop between Durham Gate and Side Road 4B Gate
- Capacity
  - ~ 20,000 GJ/d
- Project update
  - In-service Nov. 1, 2020

# Storage enhancement projects



- Capacity

- 2020 – 2021 project: 2.5 PJ of space and 30 TJ of deliverability
- 2021 – 2022 project: 6.8 PJ of space and over 60 TJ of deliverability

- Project update

- 2020 – 2021: Online Nov. 1, 2020
- 2021 – 2022: Preparing to file with the OEB November 2020

# Q&A

---

# Closing remarks

---

**Andrea Seguin**

Director, Storage and Transportation Sales

