

Proposed Hamilton Reinforcement Project

Virtual Public Information Session

February 27, 2023 to March 12, 2023



DILLON
CONSULTING

Welcome

This Virtual Public Information Session will be live for two weeks from **Monday, February 27, 2023 to Sunday, March 12, 2023**

- You can provide your input on the Hamilton Reinforcement Project by completing the comment form available on the Virtual Public Information Session website at www.HamiltonReinforcement.com. Please submit your comments by March 28, 2023.
- After Sunday, March 12, 2023, this presentation, accompanying video transcript, and the comment form will be available for download on the Enbridge Gas website at www.EnbridgeGas.com/HamiltonReinforcement
- Two In-Person Public Information Sessions will be held:
 - Thursday, March 2, 2023 at the Stoney Creek Lions Club from 5 to 8 in the afternoon (p.m.)
 - Wednesday, March 8, 2023 at the Mount Hamilton Legion from 5 to 8 p.m.
 - If you would like to meet members of the project team in-person to discuss the project, please stop by, we would love to see you!

Enbridge Gas's Commitment

Enbridge Gas provides safe and reliable delivery of natural gas to more than 3.8 million residential, commercial, and industrial customers across Ontario.



Enbridge Gas will carefully consider all input.

It is committed to involving community members and will provide up-to-date information in an open, honest, and respectful manner.



Enbridge Gas is committed to environmental stewardship and conducts all of its operations in an environmentally responsible manner.



Enbridge Gas's Environment, Health, and Safety Policies



Enbridge Gas is committed to protecting the health and safety of all individuals affected by its activities.

Enbridge Gas will provide a safe and healthy working environment and will not compromise the health and safety of any individual.

Its goal is to have no workplace incidents and to mitigate, to the extent feasible, its impacts on the environment. To achieve this goal, Enbridge Gas will work with our stakeholders, peers, and others to promote responsible environmental practices and continuous improvement.

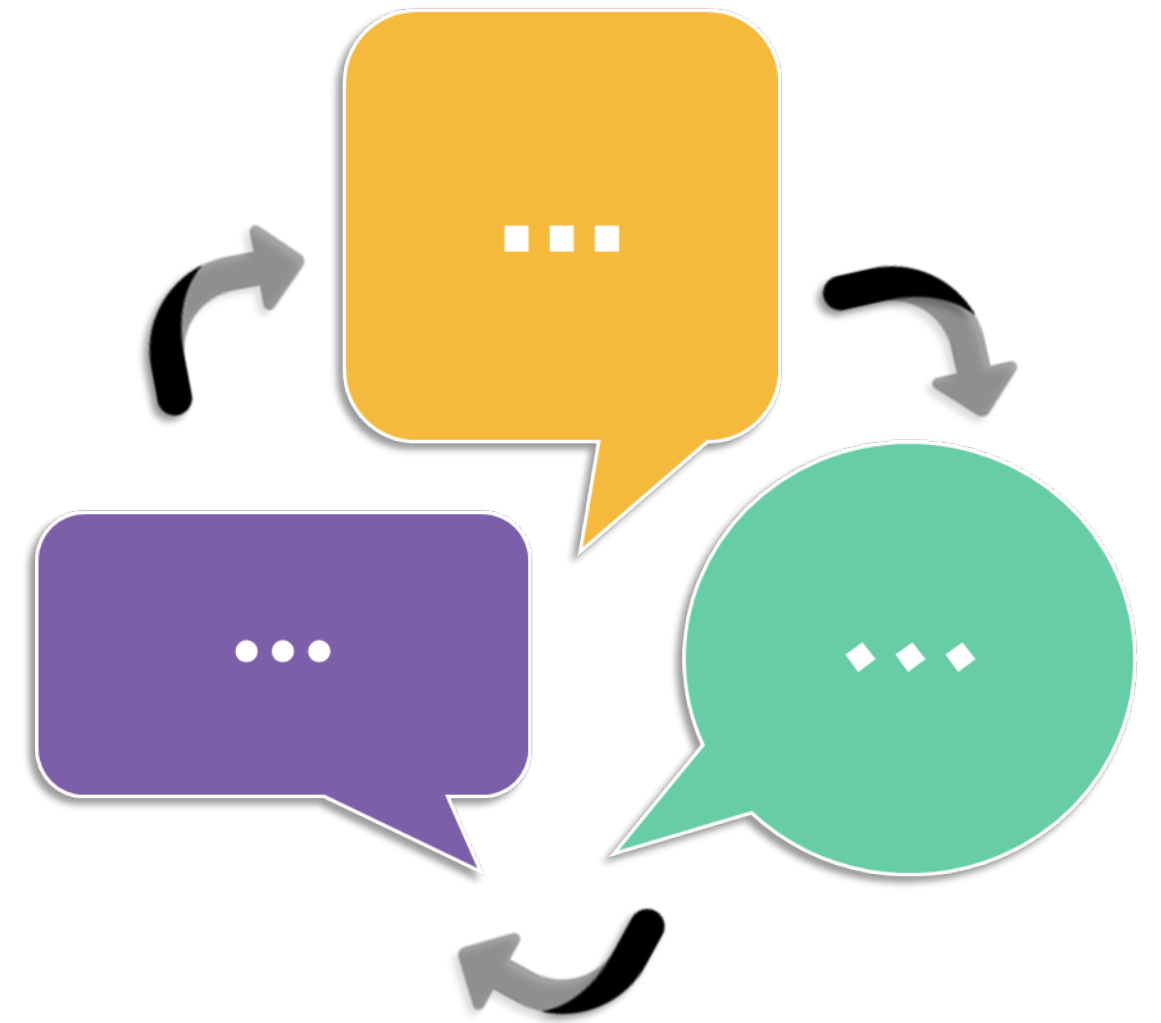


Enbridge Gas is committed to environmental protection and stewardship, and recognizes that pollution prevention, biodiversity, and resource conservation are key to a sustainable environment.

All employees are responsible and accountable for contributing to a safe working environment, for fostering safe working attitudes, and for operating in an environmentally responsible manner.

Purpose of the Public Information Session

- Provide information on the project purpose and illustrate the Preliminary Preferred Route and Alternative Routes.
- Inform landowners, Indigenous communities, municipalities, stakeholders, and regulatory authorities about the project and gather feedback about the assessment of the pipeline routes.
- Give everyone the chance to participate during the process of completing the Environmental Report, which will be included in the application to the Ontario Energy Board (OEB).
- Provide an opportunity to identify any unknown constraints and review draft plans to mitigate impacts to the local community and the environment.
- Create a space for you to ask questions and/or provide comments to Enbridge Gas or Dillon Consulting.



Consultation Approach



We are committed to a comprehensive consultation process and want to hear from you about this project.

Our consultation approach is:

- **Inclusive:** reaching out to all who may be interested or affected and providing opportunities to become informed and get involved.
- **Transparent:** providing access to information and clear explanations for decisions.
- **Accountable:** explaining how your input will be used in the decision-making process.

An important part of the consultation process is working with stakeholders to identify and resolve potential project-related issues and concerns.

Enbridge Indigenous Peoples Policy: Introduction

- Enbridge Gas follows the Enbridge Inc. (Enbridge) Indigenous Peoples Policy.
- Enbridge recognizes the diversity of Indigenous Peoples who live where the company works and operates. They understand from history the destructive impacts on the social and economic wellbeing of Indigenous Peoples. Enbridge recognizes and realizes the importance of reconciliation between Indigenous communities and the broader society. Positive relationships with Indigenous Peoples, based on mutual respect and focused on achieving common goals, will create positive outcomes from Indigenous communities.
- Enbridge commits to pursue sustainable relationships with Indigenous Nations and groups in proximity to where Enbridge conducts business. To achieve this, Enbridge will govern itself by the principles on the next slide.

Enbridge Indigenous Peoples Policy: Principles

Recognize

Enbridge **recognizes** the legal and constitutional rights of Indigenous Peoples, and the importance of the relationships between Indigenous Peoples and their traditional lands and resources. They commit to working with Indigenous communities in a manner that recognizes and respects those legal and constitutional rights and the traditional lands and resources to which they apply. Enbridge commits to ensuring that Enbridge projects and operations are carried out in an environmentally responsible manner.

Understand

Enbridge **understands** the importance of the United Nations Declaration of the Rights of Indigenous Peoples in the context of existing Canadian law and the commitments that the government has made to protecting the rights of Indigenous Peoples.

Engage

Enbridge **engages** in forthright and sincere consultation with Indigenous Peoples about their projects and operations through processes that seek to achieve early and meaningful engagement. Indigenous engagement helps define projects that may occur on lands traditionally occupied by Indigenous Peoples.

Commit

Enbridge **commits** to working with Indigenous Peoples to achieve benefits for them resulting from Enbridge's projects and operations, including opportunities in training and education, employment, procurement, business development, and community development.

Foster

Enbridge **fosters** an understanding of the history and culture of Indigenous Peoples among their employees and contractors, in order to create better relationships between Enbridge and Indigenous communities.

Enbridge Indigenous Peoples Policy: Commitment

The commitment is a shared responsibility involving Enbridge and its affiliates, employees and contractors. They will conduct business in a manner that reflects the principles listed on the previous slide. Enbridge will provide ongoing leadership and resources to effectively implement the principles, including the development of implementation strategies and specific action plans. Enbridge commits to periodically review this policy so that it remains relevant and respects Indigenous culture and varied traditions.

Regulatory Framework

For the project to proceed, approval from the OEB is required. The OEB requires that Enbridge Gas complete an environmental assessment and route selection study.

Role of the Ontario Energy Board

- Reviews the Environmental Report (including details of consultation) as part of the application, known as the “Leave-to-Construct” Application.
- Once the Leave-to-Construct (LTC) Application is submitted to the OEB, any party with an interest in the project may apply to the OEB to become intervenors or interested parties.
- Provides a public forum during the review of the LTC Application for people to participate in the decision-making process.
- Determines whether a proposed pipeline is in the public interest.



www.oeb.ca

Environmental Study Process

As part of the planning process, Enbridge Gas has retained Dillon Consulting Limited to undertake an Environmental Study for the project. The Study will fulfill the requirements of the OEB's Environmental Guidelines for the Location, Construction, and Operation of Hydrocarbon Pipelines and Facilities in Ontario, 7th Edition.

The Study will be conducted during the earliest phase of the planning process. As part of the Study, Enbridge Gas and Dillon Consulting will:

- Undertake engagement to understand the views of interested and potentially affected parties.
- Consult and engage with Indigenous communities to understand interests and potential impacts.
- Identify potential impacts of the project.
- Develop environmental mitigation and protective measures to avoid or reduce potential impacts.
- Develop an appropriate environmental inspection, monitoring, and follow-up program.
- Submit the Environmental Report for Ontario Pipeline Coordinating Committee (OPCC) review mid-April 2023. OPCC anticipated 42-day review period is mid-April 2023 to late May 2023.

Pathways to Net-Zero Emissions In Ontario

- As our climate changes, committing to a clean energy future is the right thing to do, and that includes transitioning to sustainable forms of energy.
- It is also our responsibility to pursue an informed path that minimizes costs for energy consumers and ensures energy systems are safe, dependable, and resilient, so the energy we depend on is always available.
- To help us better understand this complex issue, Enbridge Gas engaged third-party experts to undertake a study into Ontario's energy landscape and evaluate the feasibility of alternate paths to net zero.

- In brief, the resulting study found that reaching net-zero energy-related emissions in Ontario by 2050 is possible, and that through a diversified “pipes and wires” pathway that uses both the electricity and gas systems can achieve net-zero energy is the most cost-effective, dependable, and resilient way to achieve this in Ontario.
 - This practical path includes targeted end-use electrification of light-duty vehicles, building heat, and low-temperature industrial processes paired with leveraging and repurposing pipeline infrastructure to deliver low-and zero-carbon gases including Renewable Natural Gas (RNG), hydrogen and natural gas with carbon capture.

Enbridge Gas' Commitment to a Cleaner Energy Future

Enbridge Gas is committed to the transition to a net zero energy emission future. In 2020, they set a target to reach net zero in its operations by 2050, and a mid-point goal of 35 % reduction by 2030.

- Enbridge Gas safely provides reliable energy to 3.8 million customers who depend on to warm their homes, power their vehicles, and help produce and move the goods they use every day, and across their business, they're innovating and adapting their business model to accelerate the transition to a net-zero emission future.
- Focusing efforts in three areas:
 - Using less through conservation, including programs for homes, businesses and industrial customers.
 - Transitioning to renewable gases, including renewable natural gas and hydrogen.
 - Advancing clean technologies for transportation, building heat and industrial processes, such as compressed natural gas and renewable natural gas, hybrid heating, geothermal, and carbon capture technologies.
- Learn more at www.enbridgegas.com/sustainability

Integrated Resource Planning

As the energy landscape continues to evolve, there is a growing interest in low-carbon alternatives to meet energy needs.

Integrated Resource Planning (IRP) is a framework through which Enbridge Gas reviews alternative approaches to meeting energy needs, before building new infrastructure such as:

- Delivering more energy without adding new pipelines using liquefied or compressed natural gas.
- Lowering energy use through effective energy-efficiency programs.
- Displacing conventional natural gas with carbon-neutral renewable natural gas and hydrogen.



As Enbridge Gas continues to lead the transition to a low-carbon future, it is dedicated to exploring IRP alternatives where they are in the best interest of communities, the environment and the company, while considering safety and reliability, cost effectiveness, optimization, risk management and public policy.

Although no non-pipe alternatives were discovered for this project, Enbridge Gas looked at an IRP solution which contained less pipe by tying into TransCanada Energy (TCE) facilities, as the preliminary preferred alternative.

Project Overview

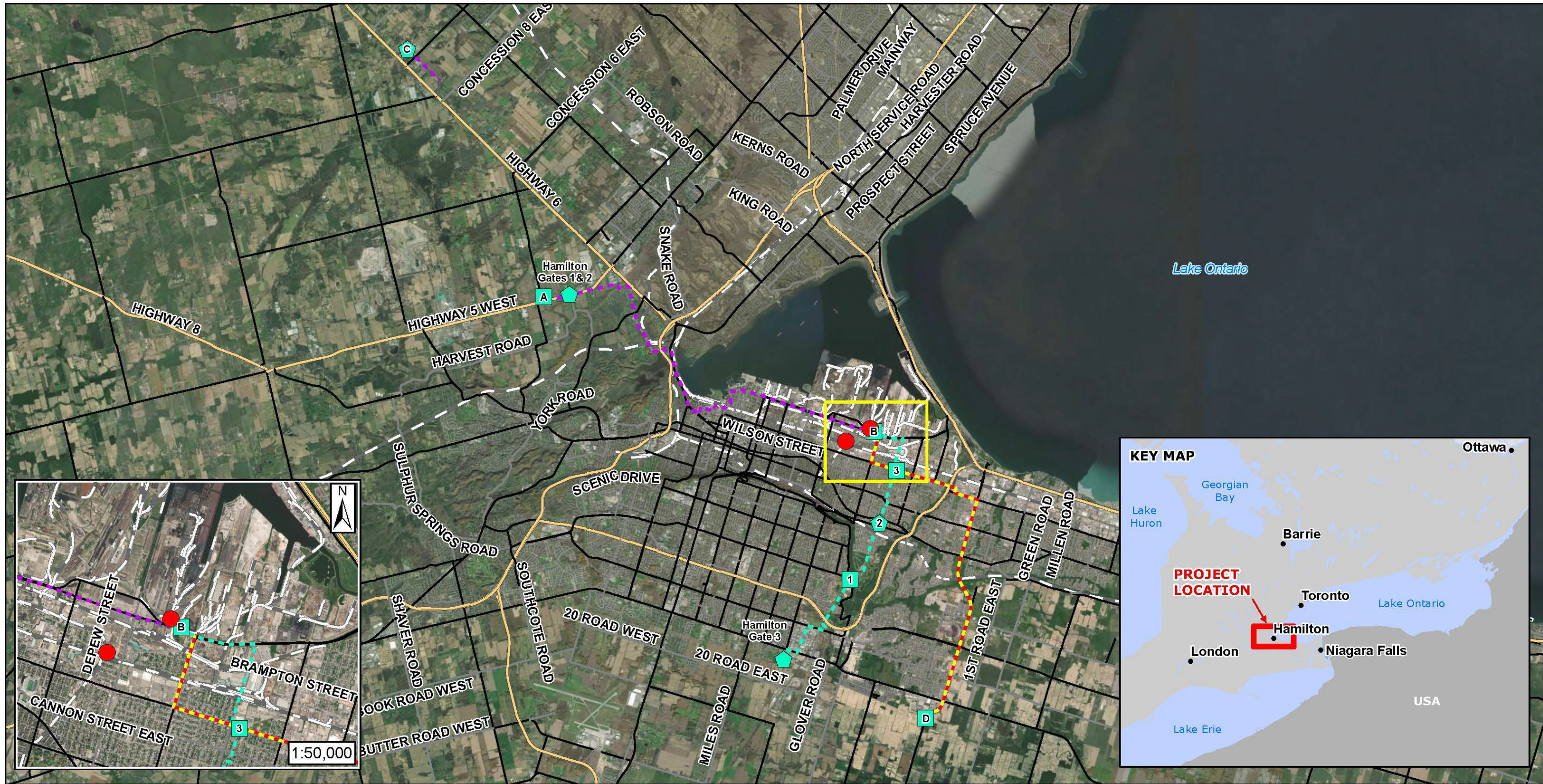
Enbridge Gas has identified a preliminary preferred route and three alternative routes ranging between 12 kilometers (km) and 16 km in the City of Hamilton.



This reinforcement growth project is required because ArcelorMittal Dofasco (AMD) is planning to significantly reduce their carbon footprint by 2028. As part of these efforts, they are planning to phase out cokemaking, coal-fueled ironmaking, and basic oxygen steelmaking and implement a new direct reduced iron and electric arc furnace (DRI-EAF) process.



AMD is planning to change their ironmaking process and to have approximately 60 % reduction in total plant CO2 emissions by 2028. This requires more natural gas than what they currently utilize. As a result, AMD requires Enbridge Gas to increase the capacity of its pipeline network in the City of Hamilton in order to meet these new natural gas requirements.



<p>ENBRIDGE ENBRIDGE GAS INC.</p> <p>Hamilton Industrial Project</p>	Proposed Station (Approximate) Existing Stations Existing Customer Station Rebuilds Required For All Routes	Preliminary Preferred Route and Alternative Route 1 Alternative Route 1 Alternative Route 2 Alternative Route 3	<p>Road Class</p> Expressway / Highway Arterial Collector	Railway
	<p>PROJECT OVERVIEW FIGURE 1</p>			

	<p>MAP DRAWING INFORMATION: DATA PROVIDED BY MNR, ENBRIDGE AERIAL PROVIDED BY ESR1</p> <p>MAP CREATED BY: DU MAP CHECKED BY: AL MAP PROJECTION: NAD 1983 CSRS UTM Zone 17N</p>	<p>SCALE 1:130,000</p> <p>0 1.5 3 6 km</p>	
<p>PROJECT: MN-9277003016 STATUS: DRAFT DATE: 2023-02-07</p>		<p>FILE LOCATION: K:\2022\225167\Product\Client\F1_ProjectOverview.mxd</p>	

Service Layer Credits: Source: Esri, Microsoft, Earthstar, Geographics, and the GIS User Community



Natural Environment: Overview

A preliminary field investigation including preliminary Ecological Land Classification (ELC) was conducted by two Dillon biologists on November 14, 16, 2022 and January 24, 2023. The investigation was conducted from the municipal road allowance along the Preliminary Preferred Route and Alternative Routes to identify and assess existing natural features, including potential terrestrial and aquatic habitat.

The results of the preliminary ELC surveys determined lands in the Study Area are primarily classified as ‘constructed’ or ‘cultural’ communities; however, natural communities also occur adjacent to the proposed pipeline routes.

Cultural communities most common within the Study Area include residential properties and active agricultural fields, such as annual row crops.

Natural communities encountered within the Study Area are diverse in habitat type, with the most common community types identified as woodlands, wetlands and meadow areas.



Natural Environment: Species at Risk (SAR)

Based on a review of existing records, 17 SAR have the potential to occur within the project Study Area. Consideration of potential SAR/SAR habitat that may be present in the Study Area was determined based on the general habitat requirements of the species and the ELC communities identified during the preliminary field investigations conducted in November 2022 and January 2023.



Blanding's Turtle



Eastern Flowering Dogwood



Red-Headed Woodpecker



Red-side Dace



Barn Swallow



SAR Bats



Bobolink

The Ministry of Environment, Conservation and Parks will be consulted during detailed design to determine whether species-specific surveys are required to support potential permitting and/or approvals under the Endangered Species Act, 2007.

Natural Environment: Potential Effects and Mitigation Measures

Examples of Potential Effects

- Temporary loss or alteration of vegetation during construction.
- Temporary alteration of wildlife habitat and/or disruption of wildlife movement during construction.
- Temporary alteration of SAR habitat and/or disruption of SAR movement during construction.

Examples of Mitigation Measures

- Minimize the width of the construction area to reduce the amount of vegetation affected.
- Flag or fence off environmentally sensitive areas prior to construction.
- Document wildlife and SAR encounters and notify appropriate regulatory authorities, where required.
- Provide SAR identification sheets to workers that outline habitat, identifying characteristics and mitigation measures.

Socio-Economic Environment: Overview

- The project is located in the City of Hamilton.
- The project Study Area is a combination of residential, mixed use, industrial, open space, and commercial land use.
- Statistics Canada Census data indicates that, in 2021, the leading industries in the City of Hamilton were construction, manufacturing, retail trade, health care and social assistance, and educational services.



The City of Hamilton aims to reduce emissions by 50% by 2030. AMD's 2028 asset change, represented by this project and others related to it, will contribute approximately 55 % to this 2030 goal.

Socio-Economic Environment: Potential Effects and Mitigation Measures

Examples of Potential Effects

- Temporary increase in nuisance noise during construction.
- Temporary traffic disruptions during construction.
- Temporary increase in wastes during construction.

Examples of Mitigation Measures

- Construction activities will be carried out in compliance with municipal noise by-laws with respect to noise and construction equipment usage. Applicable noise by-law exemptions will be sought if construction activities cannot be avoided on Statutory Holidays, Sundays or at night. (Note that typical construction days and times are Monday to Saturday, from 7 in the morning (a.m.) to 5 p.m.).
- Traffic access will be maintained, where possible, during construction. Good management and best practices will be implemented during construction to minimize traffic disruption. If required, temporary detour routes will be provided to reduce potential impacts to commuters.
- Solid waste will be collected and disposed of appropriately in accordance with applicable regulations at a licensed waste facility.

Cultural Heritage Resources: Archaeology

- A Stage 1 Archaeological Assessment is currently being conducted for the project.
- The desktop review has identified a number of archaeological sites along the Preliminary Preferred Route and Alternative Route 1, with sites in the vicinity of Royal Botanical Gardens Cootes Paradise, an area of battle that took place during the War of 1812 and subsequently, a sensitive cemetery. There are concerns of possible human remains along these routes.
- Alternative Route 2 is proposed to intersect the Hamilton Cemetery.
- Alternative Route 3 avoids the Red Hill Valley, which is an environmental and archaeological sensitive area . There are also several known archeological sites, especially towards the southern portion of the route.
- Stage 2 assessment will likely be required for any areas outside the municipal road right-of-way – exact locations for Stage 2 assessment will be confirmed following the Stage 1 site inspection.



Cultural Heritage Resources: Built Heritage and Cultural Heritage Landscapes

A Cultural Heritage Screening conducted for the project identified properties of possible Cultural Heritage Value or Interest along both the Preliminary Preferred Route and Alternative Routes.

A Cultural Heritage Assessment Report (CHAR) will be completed once the Preferred Route is selected. The CHAR will further evaluate potential heritage resources and, if necessary, a preliminary Heritage Impact Assessment will be conducted.

The results of the high level Cultural Heritage Screening found the following:

- Alternative Route 2 is located adjacent to the Royal Botanical Gardens, which contain several significant heritage buildings and sites.
- There are no Federally-designated heritage properties within the 125 metres Study Area buffer.
- Review of the Ontario Heritage Trust database did not reveal any potential concerns.
- There were no additional cemeteries or other properties/landscapes of heritage interest identified during the high-level review.

Pipeline Design, Construction and Safety

Pipeline Design



- The proposed pipeline is designed to meet and/or exceed the regulations of the Canadian Standards Association (Z662 Oil and Gas Pipeline Systems) and the applicable regulations of the Technical Standards and Safety Authority (TSSA).
- Expression of Interest (EOI) and concurrent binding reverse open season was held for existing large volume contract rate customers in the projects Area of benefit. Only one customer expressed interest in the EOI.

Pipeline Construction



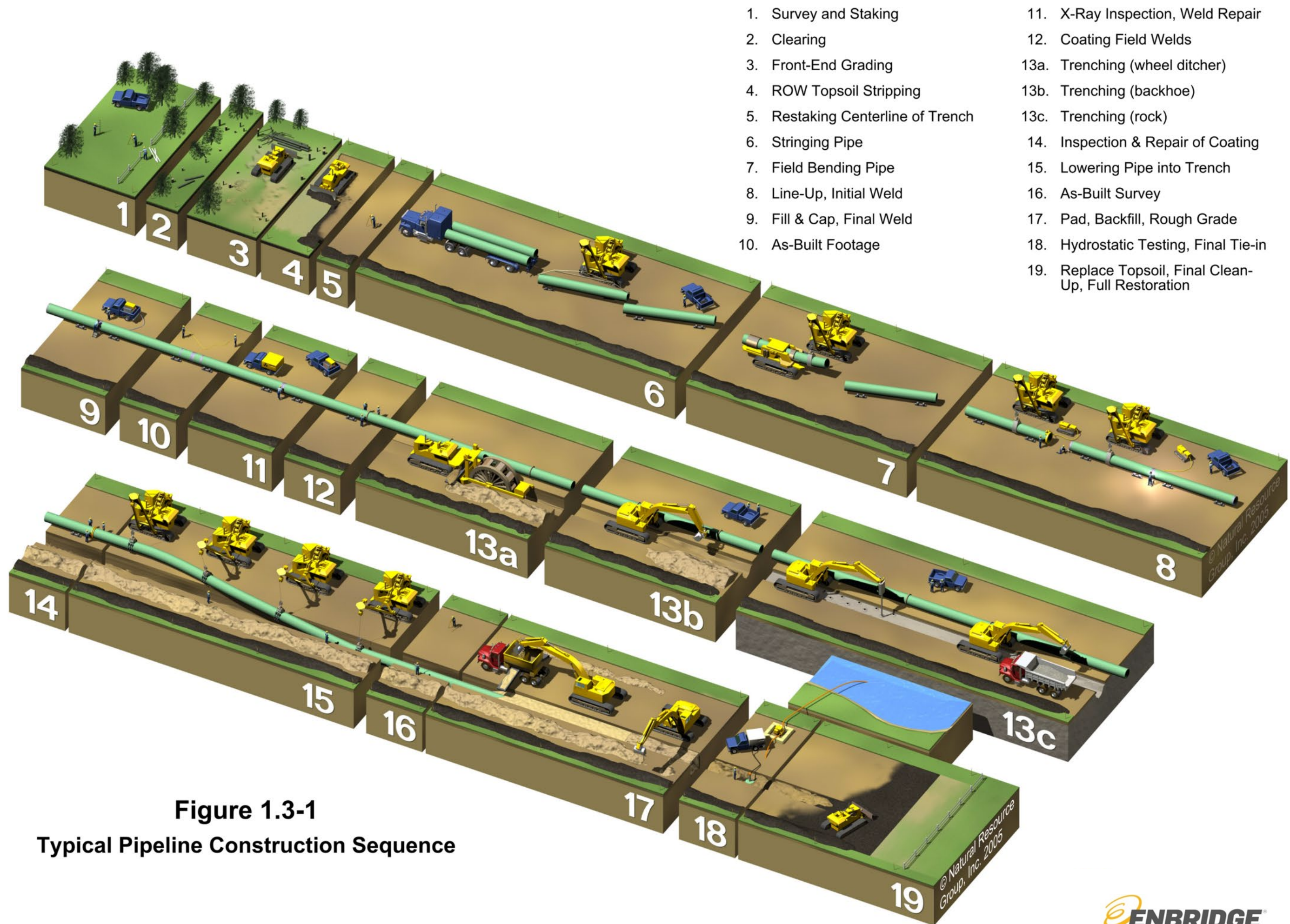
- The construction work is temporary and transitory: once the pipe is laid, the area will be restored to as close to pre-construction condition as possible.

Pipeline Safety



Enbridge Gas takes many steps to safely and reliably operate their network of natural gas pipelines, such as:

- Designing, constructing, and testing their pipelines to meet or exceed requirements set by industry standards and regulatory authorities.
- Ensuring that any work is respectful of community activities, regulations and bylaws.
- Continuously monitoring their network.
- Performing field surveys to detect leaks and confirm that corrosion prevention methods are working as intended.



1. Survey and Staking
2. Clearing
3. Front-End Grading
4. ROW Topsoil Stripping
5. Restaking Centerline of Trench
6. Stringing Pipe
7. Field Bending Pipe
8. Line-Up, Initial Weld
9. Fill & Cap, Final Weld
10. As-Built Footage
11. X-Ray Inspection, Weld Repair
12. Coating Field Welds
- 13a. Trenching (wheel ditcher)
- 13b. Trenching (backhoe)
- 13c. Trenching (rock)
14. Inspection & Repair of Coating
15. Lowering Pipe into Trench
16. As-Built Survey
17. Pad, Backfill, Rough Grade
18. Hydrostatic Testing, Final Tie-in
19. Replace Topsoil, Final Clean-Up, Full Restoration

Typical Pipeline Construction Sequence

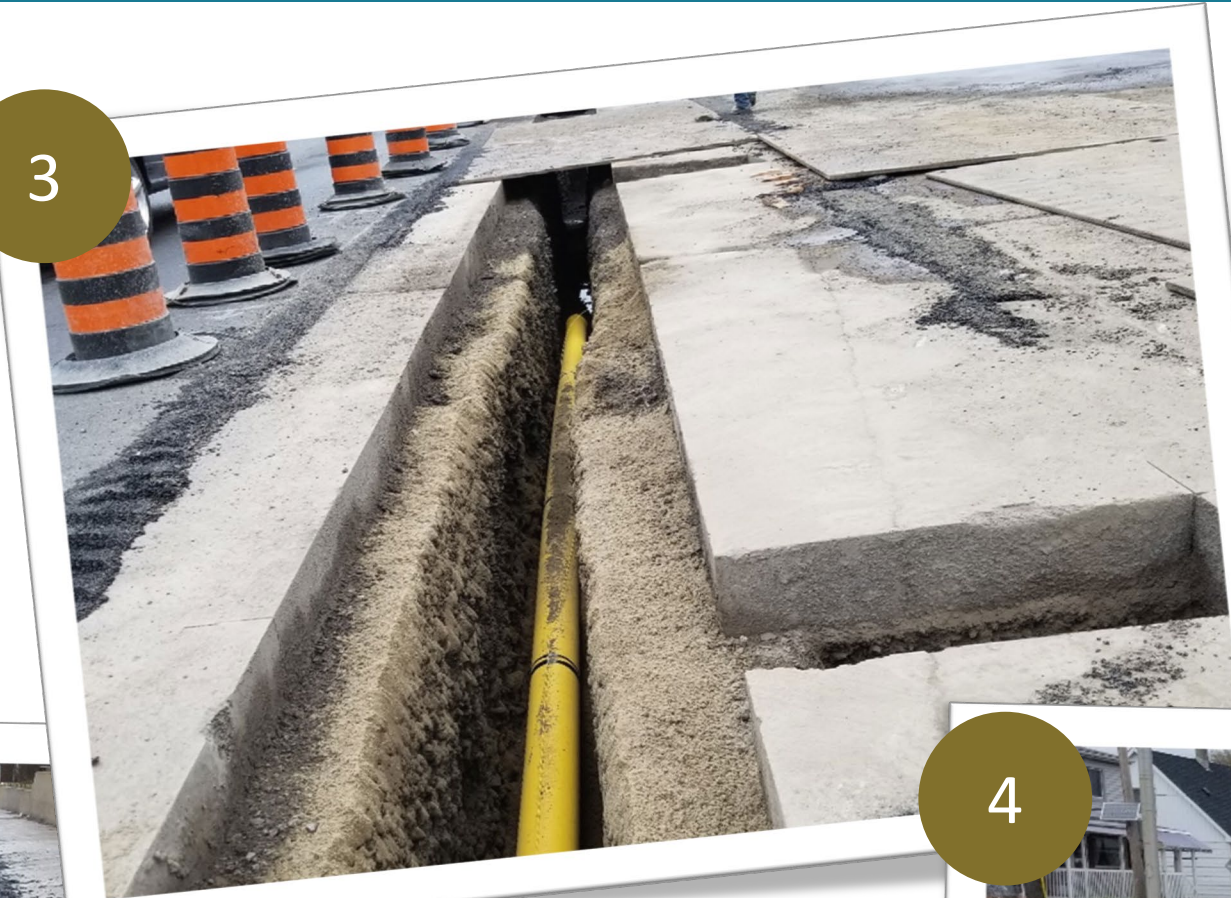
Figure 1.3-1
Typical Pipeline Construction Sequence

Example of Pipeline Installation in Road Allowance

1



3



2



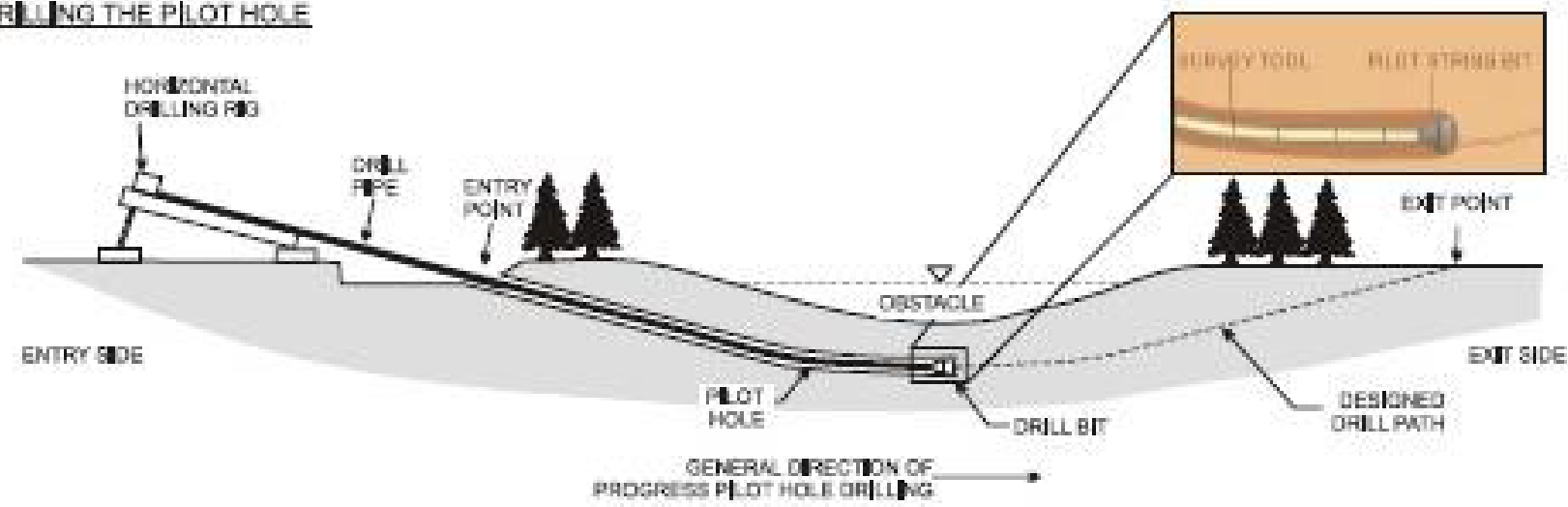
4



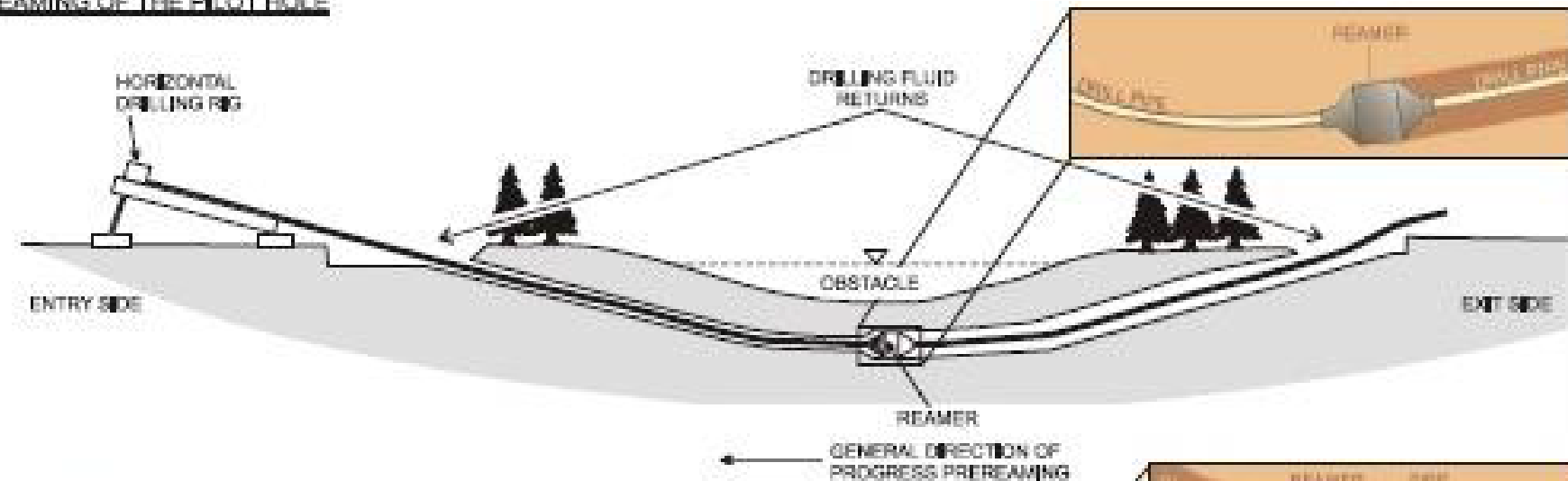
Typical Process for Horizontal Directional Drilling (HDD)

Watercourse Crossing – Horizontal Directional Drill

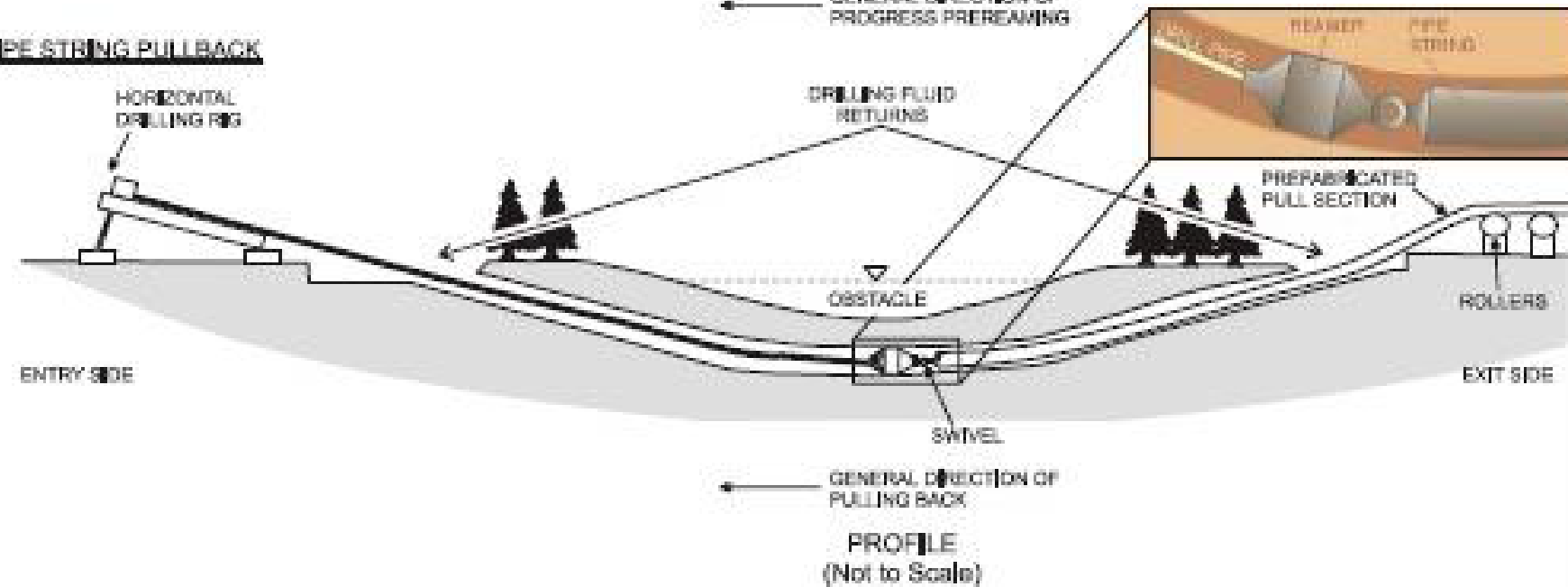
DRILLING THE PILOT HOLE



REAMING OF THE PILOT HOLE



PIPE STRING PULLBACK



Note: Modified from Canadian Association of Petroleum Producers Sept. 2004

Mitigation and Monitoring



Enbridge Gas is committed to working with the community on construction planning, mitigation, and post-construction monitoring. Post-construction monitoring will be conducted so that impacted areas are restored to as close to pre-construction conditions as possible.

Enbridge Gas recognizes that the construction of the pipeline may result in short-term adverse impacts and they commit to applying mitigation measures to reduce these impacts and work with affected municipalities and landowners so that issues are resolved in a timely manner.

Environmental Assessment Process and Project Schedule

Date	Activity
November 3, 2022	Project Kick-off
November 14 and 16, 2022 and January 24, 2023	Baseline Data Collection and Desktop Review
February 6, 2023	Notice of Study Commencement
February 27 to March 12, 2023	Virtual Public Information Session (We are here)
March 2, 2023 (5 to 8 p.m.)	In-Person Public Information Session 1 (Stoney Creek Lions Club)
March 8, 2023 (5 to 8 p.m.)	In-Person Public Information Session 2 (Mount Hamilton Legion)
April 14, 2023	Environmental Report submitted to Ontario Pipeline Coordinating Committee for 42-day Review Period
November 2023	Anticipated date for Leave-to-Construct Application submission to the OEB
Q1 / Q2 2025	Tentative Construction Start Date (pending OEB approval)
November 1, 2025	Potential Construction Completion Date

Continuous Stakeholder Engagement

Enbridge Gas is committed to open dialogue throughout the environmental assessment and the OEB Leave-to-Construct Application process. Stakeholders will have the opportunity to remain engaged in the process after the environmental assessment is completed, through:

- Participation in the Ontario Energy Board hearing as an intervenor or interested party (details can be found at www.oeb.ca).
- Contacting project team members (project contact information provided on next slide).
- Visiting the Enbridge Gas project website at www.EnbridgeGas.com/HamiltonReinforcement/



Thank you for participating in our
Virtual Public Information Session!

- We want to hear from you! Please complete the project comment form on the Virtual Public Information Session website at www.HamiltonReinforcement.com.
- After Sunday, March 12, 2023, this presentation, accompanying video transcript, and the comment form will be available for download on the Enbridge Gas website at www.Enbridge.com/HamiltonReinforcement.
- Please submit your feedback by **Tuesday, March 28, 2023** so it can be considered in the Environmental Report that will be submitted to the Ontario Energy Board.

Project Contact Information:

Email: HamiltonReinforcementProject@dillon.ca

Phone: 519-571-9833 ext. 3154

Stay Informed