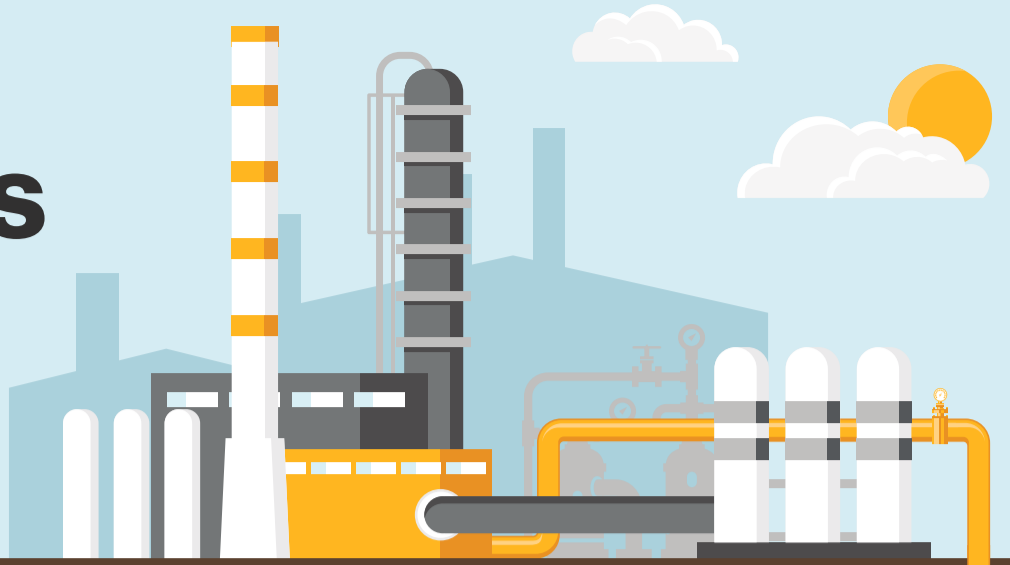


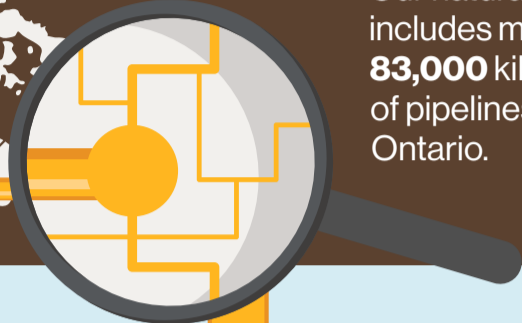
How does natural gas get to my home?



A network of mostly underground pipelines transport natural gas from all over North America to Enbridge's distribution system in Ontario.



Our natural gas system includes more than **83,000** kilometres of pipelines throughout Ontario.



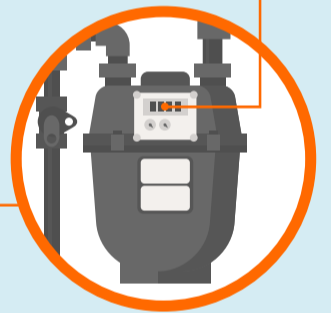
Safety valves are strategically located throughout our distribution network, so that systems can be safely isolated for maintenance or emergency repairs.



A natural gas main delivers natural gas to your neighbourhood.



Your meter is an integral part of the distribution network and measures your natural gas use.



Your meter delivers safe, reliable and economic natural gas to your home.

A small natural gas **service line** brings the gas from the main to your natural gas meter.

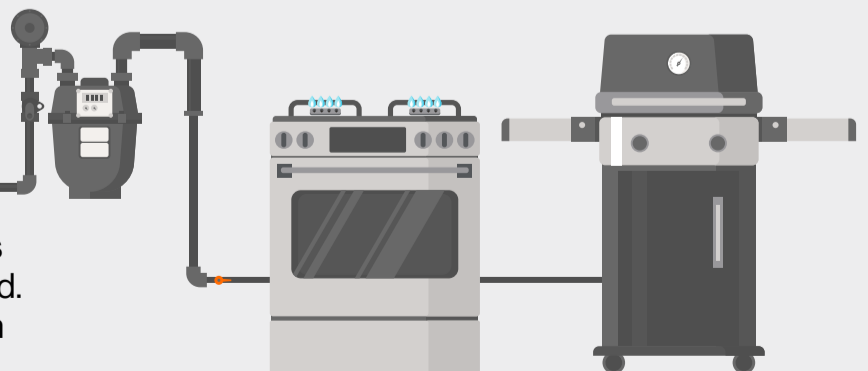
We have **66,474** kilometres of service lines throughout Ontario.

Service line

Main

The main is buried underneath the ground and can be under roads, sidewalks, lawns, and driveways.

Enbridge Gas owns and operates the infrastructure leading up to and including your natural gas meter.



Beyond your natural gas meter, small gas pipelines run throughout your home and potentially your yard. These customer owned small pipes bring gas from the meter to your natural gas appliances.