

# Proposed 5371 Boundary Road Pipeline Project

Virtual Public Information Session

November 14, 2022 – November 27, 2022



**DILLON**  
CONSULTING

The logo for Dillon Consulting, consisting of a stylized white graphic of two parallel lines curving upwards, followed by the text "DILLON" in a bold, white, sans-serif font and "CONSULTING" in a smaller, white, sans-serif font below it.

# Welcome

This Virtual Information Session will be live for two weeks from Monday, November 14, 2022 – Sunday, November 27, 2022

- You can provide your input on the 5371 Boundary Road Pipeline Project by completing the questionnaire available on the Virtual Public Information Session website at [www.BoundaryRoadEA.ca](http://www.BoundaryRoadEA.ca). Please submit your comments by December 14, 2022.
- After Sunday, November 27, 2022, this presentation, accompanying video transcript, and the questionnaire will be available for download on the Enbridge Gas website at [www.enbridgegas.com/boundaryroad](http://www.enbridgegas.com/boundaryroad).

# Enbridge Gas Commitment

Enbridge Gas provides safe and reliable delivery of natural gas to more than 3.8 million residential, commercial, and industrial customers across Ontario.



Enbridge Gas will carefully consider all input.

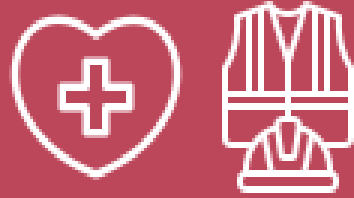
It is committed to involving community members and will provide up-to-date information in an open, honest, and respectful manner.



Enbridge Gas is committed to environmental stewardship and conducts all of its operations in an environmentally responsible manner.



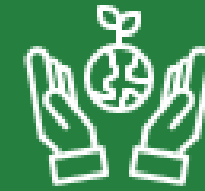
# Enbridge Gas Environment, Health, and Safety Policies



Enbridge Gas is committed to protecting the health and safety of all individuals affected by its activities.

Enbridge Gas will provide a safe and healthy working environment and will not compromise the health and safety of any individual.

Its goal is to have no workplace incidents and to mitigate, to the extent feasible, its impacts on the environment. To achieve this goal, Enbridge Gas will work with our stakeholders, peers, and others to promote responsible environmental practices and continuous improvement.

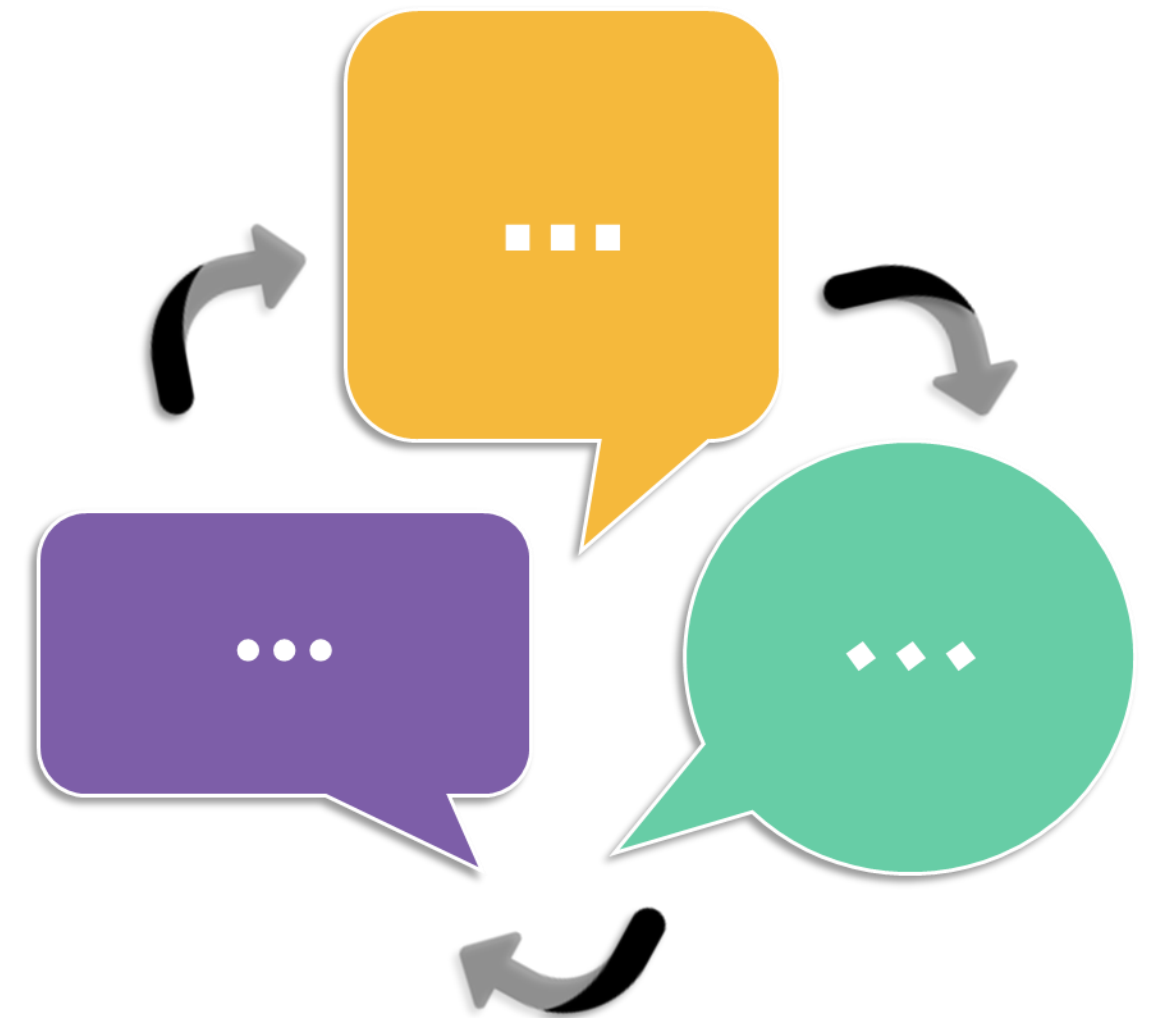


Enbridge Gas is committed to environmental protection and stewardship, and recognizes that pollution prevention, biodiversity, and resource conservation are key to a sustainable environment.

All employees are responsible and accountable for contributing to a safe working environment, for fostering safe working attitudes, and for operating in an environmentally responsible manner.

# Purpose of the Virtual Public Information Session

- Provide background information on the Project and illustrate the preferred route for the pipeline
- Inform landowners, Indigenous communities, municipalities, stakeholders, and regulatory authorities about the Project and gather feedback about the proposed pipeline route
- Give everyone the chance to participate during the process of completing the Environmental Report Update, which will be included in the application to the Ontario Energy Board
- Provide an opportunity to identify any unknown constraints and review draft plans to mitigate impacts to the local community and the environment
- Create a space for you to ask questions and/or provide comments to Enbridge Gas or Dillon



# Consultation Approach



We are committed to a comprehensive consultation process and want to hear from you about this Project.

Our consultation approach is:

- **Inclusive** – reaching out to all who may be interested or affected and providing opportunities to become informed and get involved.
- **Transparent** – providing access to information and clear explanations for decisions.
- **Accountable** – explaining how your input will be used in the decision-making process.

An important part of the consultation process is working with stakeholders to identify and resolve potential Project-related issues and concerns.

# Enbridge Indigenous Peoples Policy – Introduction

- Enbridge Gas follows the Enbridge Inc. (Enbridge) Indigenous Peoples Policy.
- Enbridge recognizes the diversity of Indigenous Peoples who live where the company works and operates. They understand from history the destructive impacts on the social and economic wellbeing of Indigenous Peoples. Enbridge recognizes and realizes the importance of reconciliation between Indigenous communities and the broader society. Positive relationships with Indigenous Peoples, based on mutual respect and focused on achieving common goals, will create positive outcomes from Indigenous communities.
- Enbridge commits to pursue sustainable relationships with Indigenous Nations and groups in proximity to where Enbridge conducts business. To achieve this, Enbridge will govern itself by the principles on the next slide.

# Enbridge Indigenous Peoples Policy – Principles

## Recognize

Enbridge **recognizes** the legal and constitutional rights of Indigenous Peoples, and the importance of the relationships between Indigenous Peoples and their traditional lands and resources. They commit to working with Indigenous communities in a manner that recognizes and respects those legal and constitutional rights and the traditional lands and resources to which they apply. Enbridge commits to ensuring that Enbridge projects and operations are carried out in an environmentally responsible manner.

## Understand

Enbridge **understands** the importance of the United Nations Declaration of the Rights of Indigenous Peoples in the context of existing Canadian law and the commitments that the government has made to protecting the rights of Indigenous Peoples.

## Engage

Enbridge **engages** in forthright and sincere consultation with Indigenous Peoples about their projects and operations through processes that seek to achieve early and meaningful engagement. Indigenous engagement helps define projects that may occur on lands traditionally occupied by Indigenous Peoples.

## Commit

Enbridge **commits** to working with Indigenous Peoples to achieve benefits for them resulting from Enbridge's projects and operations, including opportunities in training and education, employment, procurement, business development, and community development.

## Foster

Enbridge **fosters** an understanding of the history and culture of Indigenous Peoples among their employees and contractors, in order to create better relationships between Enbridge and Indigenous communities.



# Enbridge Indigenous Peoples Policy – Commitment

The commitment is a shared responsibility involving Enbridge and its affiliates, employees and contractors. They will conduct business in a manner that reflects the principles listed on the previous slide. Enbridge will provide ongoing leadership and resources to effectively implement the principles, including the development of implementation strategies and specific action plans. Enbridge commits to periodically review this policy so that it remains relevant and respects Indigenous culture and varied traditions.

# Project Background



- Enbridge Gas first initiated the Project in 2019 at the request of two customers.
- A public information session took place on November 27, 2019, and an environmental assessment and design were completed in early 2020.
- The Project was put on-hold in October 2020 after the potential customers withdrew their request.
- The Project recommenced in May 2022 at the request of one customer.
- While the Project study area remains consistent, Enbridge Gas has retained Dillon Consulting Limited to oversee the environment-related components required for a new application to the Ontario Energy Board.

# Project Description

**The Project is customer-driven and intended to only serve the warehouse located at 5371 Boundary Road.**



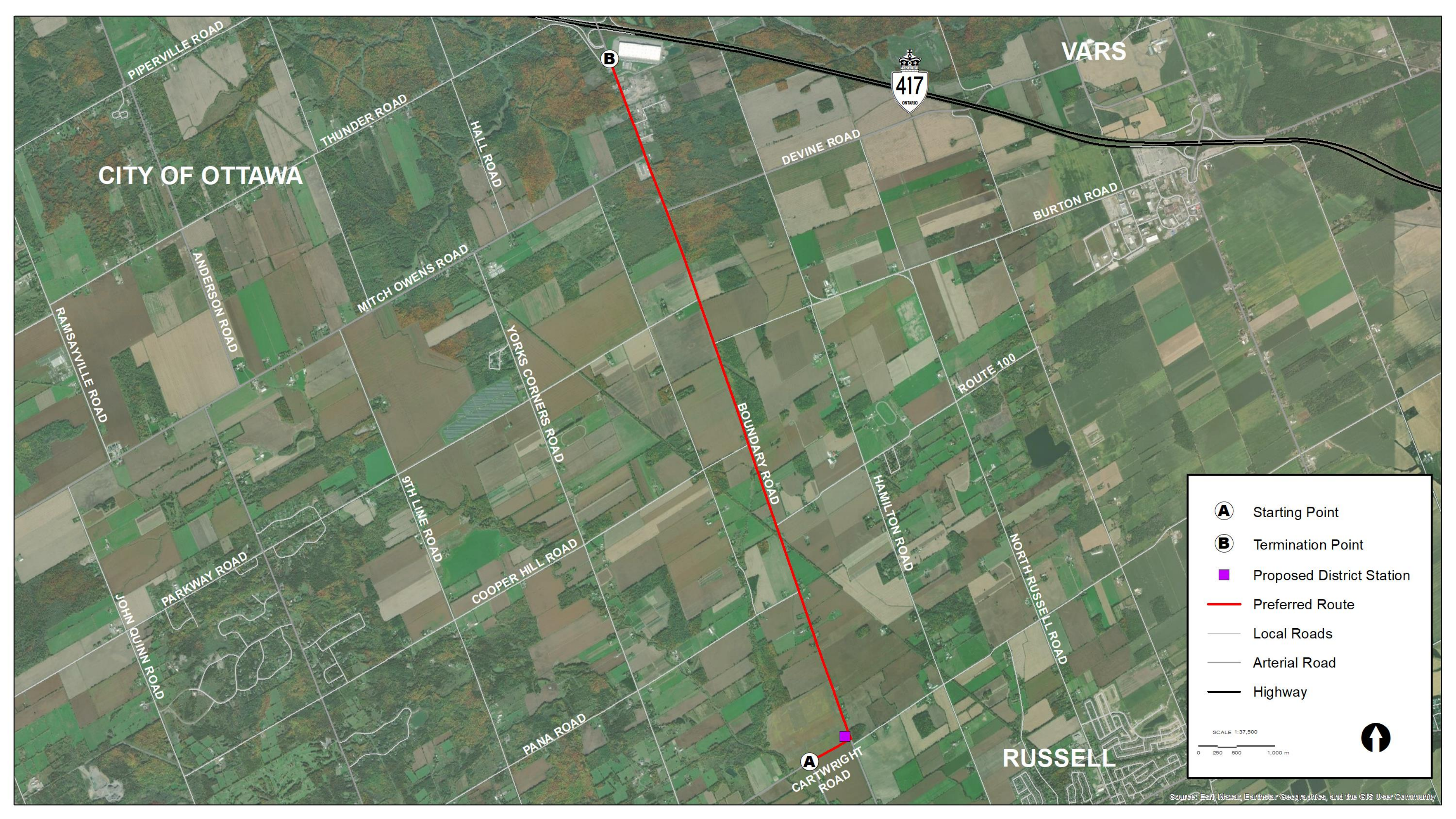
The Project involves the installation of approximately 700 m of 4-inch steel pipeline along Cartwright Street, 9.4 km of 4-inch polyethylene pipeline along Boundary Road, and a new District Station on the north side of Cartwright Street, approximately 60 m west of Boundary Road.

The pipeline will be installed mainly within the existing road allowance with additional temporary working space potentially required for lay-down, storage and excess soils management.



## Did you know?

District stations are pressure regulating stations that reduce natural gas pressure and feed lower pressure networks safely.



CITY OF OTTAWA

VARS

RUSSELL



B

A

- A** Starting Point
- B** Termination Point
- Proposed District Station
- Preferred Route
- Local Roads
- Arterial Road
- Highway

SCALE 1:37,500  
0 250 500 1,000 m



Source: Esri, Maxar, Earthstar Geographics, and the GIS User Community

# Natural Environment Considerations

- A natural environment field survey of the Project Footprint was completed by a Dillon Biologist on September 16, 2022.
- The Project Footprint is defined as a 30 meter buffer on each side of the pipeline route.



The Project Footprint consists of the following land classifications outside of the municipal road allowance:

- Deciduous Forest
- Deciduous Thicket
- Unevaluated Wetland
- Mixed Meadow
- Agricultural
- Residential
- Industrial
- Commercial

# Natural Environment Considerations

Examples of Species at Risk (SAR) and Species of Conservation Concern (SCC) known to occur in the Project area include, but are not limited to, those shown below.

**Eastern wood-pewee  
(Contopus virens)**



**Monarch Butterfly  
(Danaus plexippus)**



**Butternut  
(Junlans cinerea)**



# Natural Environment Considerations

## Examples of Potential Effects

- Temporary loss or alteration of vegetation during construction.
- Temporary alteration of wildlife habitat and/or disruption of wildlife movement during construction.
- Temporary alteration of SAR habitat and/or disruption of SAR movement during construction.

## Examples of Mitigation Measures

- Minimize the width of the construction area to reduce the amount of vegetation affected.
- Flag or fence off environmentally sensitive areas prior to construction.
- Document wildlife and SAR encounters and notify appropriate regulatory authorities, where required.
- Provide SAR identification sheets to workers that outline habitat, identifying characteristics and mitigation measures.

# Socio-Economic Considerations

- The Project Study Area (100 m on each side of the proposed pipeline route) is situated in Ward 20 of the City of Ottawa and Russell Township.
- The Study Area is also within the current Algonquins of Ontario (AOO) land claim for their unceded traditional territory. There are two parcels of land adjacent to Boundary Road slated to be transferred to the Algonquins of Ontario, according to a non-binding Agreement-in-Principle signed by the AOO and the governments of Canada and Ontario on October 18, 2016. The AOO plan to develop a residential community on the land.

The Study Area is mainly composed of agricultural lands and woodlands, with some industrial and low-density residential areas.





# Socio-Economic Considerations

## Examples of Potential Effects

- Temporary increase in nuisance noise during construction.
- Temporary traffic disruptions during construction.
- Temporary increase in wastes during construction.

## Examples of Mitigation Measures

- Construction activities will be carried out in compliance with municipal noise by-laws with respect to noise and construction equipment usage. Applicable noise by-law exemptions will be sought if construction activities cannot be avoided on Statutory Holidays, Sundays or at night.
- Traffic access will be maintained, where possible, during construction. Good management and best practices will be implemented during construction to minimize traffic disruption. If required, temporary detour routes will be provided to reduce potential impacts to commuters.
- Solid waste will be collected and disposed of appropriately in accordance with applicable regulations at a licensed waste facility.

# Cultural Heritage Resources

## Archaeology

- A Stage 1 Archaeological Assessment for the Project was completed and submitted to the Ministry of Tourism, Culture and Sport (MTCS) in February 2020.
- The Stage 1 study determined that no previously registered archaeological sites are located within 1 km of the Study Area. The property inspection determined that parts of the Preferred Route exhibited archaeological potential.
- The Stage 1 recommended that the parts of the Study Area exhibiting archaeological potential, notably the District Station location, be subject to a Stage 2 Archaeological Assessment prior to construction.
- A Stage 2 assessment is planned for Spring 2023.

## Built Heritage and Cultural Heritage Landscapes

- There are no properties within the Study Area that are Listed or Designated under the Ontario Heritage Act based on a review of the City of Ottawa Heritage Register and the Russell Township website.
- There are no cemeteries located in the Study Area.
- The MTCS “Criteria for Evaluating Potential Built Heritage Resources and Cultural Heritage Landscapes” Checklist was completed and concluded that there is low potential for built heritage or cultural heritage landscapes in the Study Area.

# Pipeline Design, Construction and Safety

## Pipeline Design



- The proposed pipeline is designed to meet and/or exceed the regulations of the Canadian Standards Association (Z662 Oil and Gas Pipeline Systems) and the applicable regulations of the Technical Standards & Safety Authority (TSSA).

## Pipeline Construction



- The construction work is temporary and transitory – once the pipe is laid, the area will be restored to as close to pre-construction condition as possible.

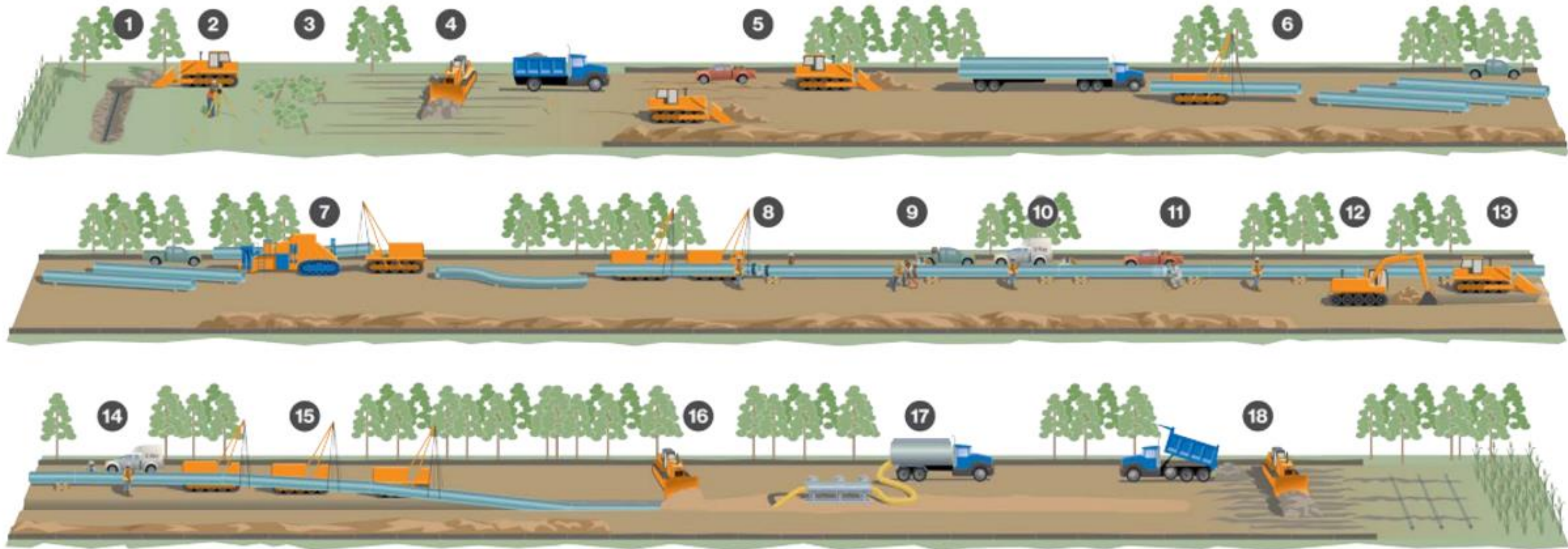
## Pipeline Safety



Enbridge Gas takes many steps to safely and reliably operate their network of natural gas pipelines, such as:

- Designing, constructing, and testing their pipelines to meet or exceed requirements set by industry standards and regulatory authorities.
- Ensuring that any work is respectful of community activities, regulations and bylaws.
- Continuously monitoring their network.
- Performing field surveys to detect leaks and confirm that corrosion prevention methods are working as intended.

# General Construction Overview



- |                            |                                   |                       |   |   |   |
|----------------------------|-----------------------------------|-----------------------|---|---|---|
| 1. Pre-construction tiling | 4. Right-of-way topsoil stripping | 7. Field bending pipe | 10. X-ray or ultrasonic inspection, weld repair | 13. Padding trench bottom               | 16. Backfilling                                   |
| 2. Surveying and staking   | 5. Front-end grading              | 8. Lining-up pipe     | 11. Field coating                               | 14. Final inspection and coating repair | 17. Hydrostatic testing                           |
| 3. Clearing                | 6. Stringing pipe                 | 9. Welding process    | 12. Digging the trench                          | 15. Lowering pipe                       | 18. Site restoration and post-construction tiling |

# Mitigation and Monitoring



Enbridge Gas is committed to working with the community on construction planning, mitigation, and post-construction monitoring. Post-construction monitoring will be conducted so that impacted areas are restored to as close to pre-construction conditions as possible.

Enbridge Gas recognizes that the construction of the pipeline may result in short-term adverse impacts and they commit to applying mitigation measures to reduce these impacts and work with the municipality and landowners so that issues are resolved in a timely manner.

# Regulatory Framework

For the Project to proceed, approval from the Ontario Energy Board (OEB) is required. The OEB requires that Enbridge Gas complete an environmental assessment and route selection study.



## Role of the Ontario Energy Board

- Reviews the Environmental Report (including details of consultation) as part of the application, known as the “Leave-to-Construct” Application.
- Once the Leave-to-Construct (LTC) Application is submitted to the OEB, any party with an interest in the Project may apply to the OEB to become intervenors or interested parties.
- Provides a public forum during the review of the LTC Application for people to participate in the decision-making process.
- Determines whether a proposed pipeline is in the public interest.

# Project Timeline

Date	Activity
Early 2019	Project initiated at request of two customers
November 27, 2019	Public information session
Early 2020	Environmental Report and design completed
October 2020	Project put on hold (customers withdrew request)
May 2022	Project recommenced at request of one customer
September 2022	Dillon retained to conduct a review and update of the 2020 Environmental Report
September 2022	Field studies conducted to document changes in baseline conditions since 2019
October 31, 2022	Notice of Study Recommencement
<b>November 14-27, 2022</b>	<b>Virtual Public Information Session (We are here)</b>
December 2022	Environmental Report (2020) and Environmental Report Update submitted to Ontario Pipeline Coordinating Committee for 42-day review period
February 2023	Submission of updated LTC Application to OEB
January 2024	Construction start date (pending OEB approval)
August 2024	Anticipated in-service date

# Continuous Stakeholder Engagement

Enbridge Gas is committed to open dialogue throughout the environmental assessment and the OEB Leave-to-Construct Application process. Stakeholders will have the opportunity to remain engaged in the process after the environmental assessment is completed, through:

- Participation in the Ontario Energy Board hearing as an intervenor or interested party (details can be found at [www.oeb.ca](http://www.oeb.ca))
- Contacting Project team members (Project contact information provided on next slide)
- Visiting the Enbridge Gas project website at [www.enbridgegas.com/boundaryroad](http://www.enbridgegas.com/boundaryroad)





Thank you for participating in our  
Virtual Public Information Session!

- We want to hear from you! Please complete the Project questionnaire on the Virtual Public Information Session website at [www.BoundaryRoadEA.ca](http://www.BoundaryRoadEA.ca).
- After Sunday, November 27, 2022, this presentation, accompanying video transcript, and the questionnaire will be available for download on the Enbridge Gas website at [www.enbridgegas.com/boundaryroad](http://www.enbridgegas.com/boundaryroad).
- Please submit your feedback by **Wednesday, December 14, 2022** so it can be considered in the Environmental Report Update that will be submitted to the Ontario Energy Board.

### **Project Contact Information:**

**Email:** [BoundaryRoadEA@dillon.ca](mailto:BoundaryRoadEA@dillon.ca)

**Phone:** 613-745-2213, ext. 3024

**Stay Informed**