

Welcome

- Please navigate through the presentation at your own pace.
- To advance to the next slide, press the next button. To return to the previous slide, press the previous button.
- You can mute the audio at any time by pressing the speaker icon.
- The presentation slides as well as the audio script are available for download (see the Resources tab in the top right corner).
- Questions and comments can be submitted using the questionnaire found in the Resources tab.
- If you would like to receive future Project updates, please complete the "Contact Information" section of the questionnaire.

Our commitment

- Enbridge Gas is committed to involving community members.
- We will provide up-to-date information in an open, honest, and respectful manner, and will carefully consider your input.
- Enbridge Gas provides safe and reliable delivery of natural gas to more than 3.7 million residential, commercial, and industrial customers across Ontario.
- Enbridge Gas is committed to environmental stewardship and conducts all of its operations in an environmentally responsible manner.

Dawn-Corunna Project Virtual Open House #1

Project Overview

To maintain safe and reliable operations Enbridge Gas Inc. (Enbridge) has identified the potential need to replace assets in the County of Lambton.

The proposed Dawn-Corunna Project (the Project) may include all or some of the following:

- The decommissioning of up to seven (7) reciprocating natural gas compressors located at the Corunna Compressor Station, which were installed between 1964 and 1974 and are approaching the end of their lifecycle.
- Meeting existing firm natural gas demand through the construction of a new steel natural gas pipeline, 36-inch diameter, between the Dawn Operations Centre in the Township of Dawn-Euphemia and the Corunna Compressor Station in St. Clair Township. The length of the proposed pipeline will be determined upon the selection of a preferred route.

If approved by the Ontario Energy Board (OEB), construction of the proposed project is planned to begin in spring/summer 2023 and be complete by the end of 2023.



Dawn-Corunna Project Virtual Open House #1



Purpose of the Virtual Open House

- Engage with landowners, Indigenous communities, stakeholders, regulatory authorities and the public to gather input on the Alternative Route options and identify any unknown constraints.
- Provide a safe alternative to an in-person information session due to current physical distancing requirements set out by the Province of Ontario and the Government of Canada.
- Provide an opportunity to review the proposed Project, and to ask any questions and/or provide comments to representatives from Enbridge Gas and Stantec.



Dawn-Corunna Project Virtual Open House #1



Indigenous People Policy

Enbridge Gas recognizes the diversity of Indigenous peoples who live where we work and operate. We understand from history the destructive impacts on the social and economic wellbeing of Indigenous Peoples. Enbridge Gas recognizes and realizes the importance of reconciliation between Indigenous communities and the broader society. Positive relationships with Indigenous peoples, based on mutual respect and focused on achieving common goals, will create positive outcomes for Indigenous communities. Enbridge Gas commits to pursue sustainable relationships with Indigenous Nations and groups in proximity to where Enbridge Gas conducts business. To achieve this, Enbridge Gas will govern itself by the following principles:

- We recognize the legal and constitutional rights possessed by Indigenous peoples, and the importance of the relationship between Indigenous Peoples and their traditional lands and resources. We commit to working with Indigenous communities in a manner that recognizes and respects those legal and constitutional rights and the traditional lands and resources to which they apply. We commit to ensuring that our projects and operations are carried out in an environmentally responsible manner.
- We understand the importance of the United Nations Declaration on the Rights of Indigenous Peoples in the context of existing Canadian law and the commitments that the government has made to protecting the rights of Indigenous Peoples.
- We engage in forthright and sincere consultation with Indigenous Peoples about Enbridge Gas's projects and operations through processes that seek to achieve early and meaningful engagement. Indigenous engagement help define our projects that may occur on lands traditionally occupied by Indigenous Peoples.
- We commit to working with Indigenous Peoples to achieve benefits for them resulting from Enbridge Gas's projects and operations, including opportunities in training and education, employment, procurement, business development, and community development.
- We foster understanding of the history and culture of Indigenous Peoples among Enbridge Gas's employees and contractors, in order to create better relationships between Enbridge Gas and Indigenous communities.

This commitment is a shared responsibility involving Enbridge Gas and its affiliates, employees and contractors. We will conduct business in a manner that reflects the above principles. Enbridge Gas will provide ongoing leadership and resources to effectively implement the above principles, including the development of implementation strategies and specific action plans. Enbridge Gas commits to periodically review this policy so that it remains relevant and respects Indigenous culture and varied traditions





Environment, Health and Safety Policy

Our commitment

- Enbridge Gas is committed to protecting the health and safety of all individuals affected by our activities.
- Enbridge Gas will provide a safe and healthy working environment and will not compromise the health and safety of any individual.
- Our goal is to have no incidents and mitigate impacts on the environment by working with Indigenous communities, stakeholders, peers, and others to promote responsible environmental practices and continuous improvement.
- Enbridge Gas is committed to environmental protection and stewardship and we recognize that pollution prevention, biodiversity, and resource conservation are key to a sustainable environment.
- All employees are responsible and accountable for contributing to a safe working environment, fostering safe working attitudes, and operating in an environmentally responsible manner.



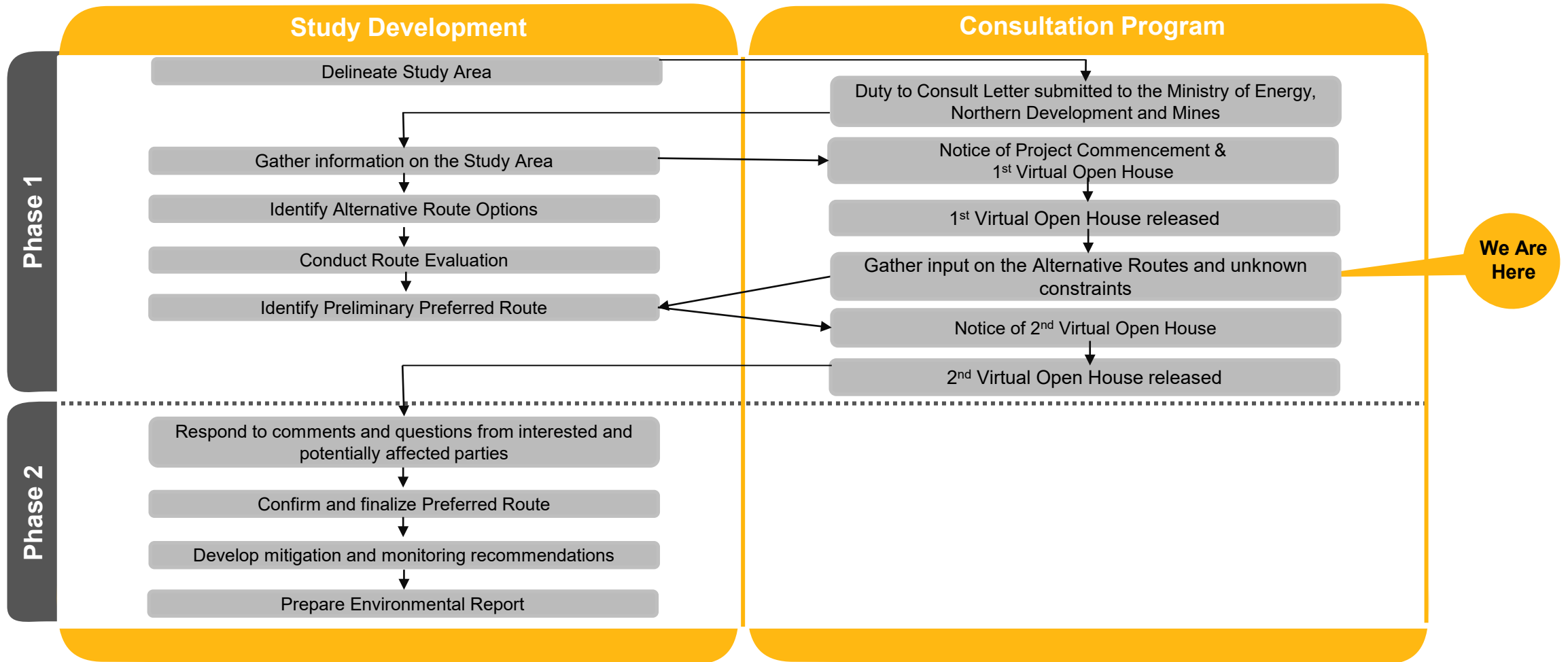
Environmental Study Process

The environmental study and Environmental Report will be completed as per the OEB's "*Environmental Guidelines for the Location, Construction and Operation of Hydrocarbon Pipelines and Facilities in Ontario (2016)*."

The study will:

- Undertake consultation to understand the views of interested and potentially affected parties.
- Engage with Indigenous communities to understand interests and potential impacts.
- Be conducted during the earliest phase of the Project
- Identify and mitigate potential impacts of the Project, where possible.
- Develop environmental mitigation and protective measures to avoid or reduce potential impacts, where possible.
- Develop an appropriate environmental inspection, monitoring and follow-up program.

Environmental Study Process





Ontario Energy Board (OEB) Review and Approval Process

The application to the OEB will include information on the Project, including:

- The need for the Project
- Environmental Report and mitigation measures
- Facility alternatives
- Project costs and economics
- Pipeline design and construction
- Land requirements
- Consultation with Indigenous Communities

Additional information about the
OEB process can be found at:
www.ontarioenergyboard.ca

The OEB will then hold a public hearing to review the Project. If the OEB determines that the Project is in the public interest it will approve construction of the Project.

Route Selection Process

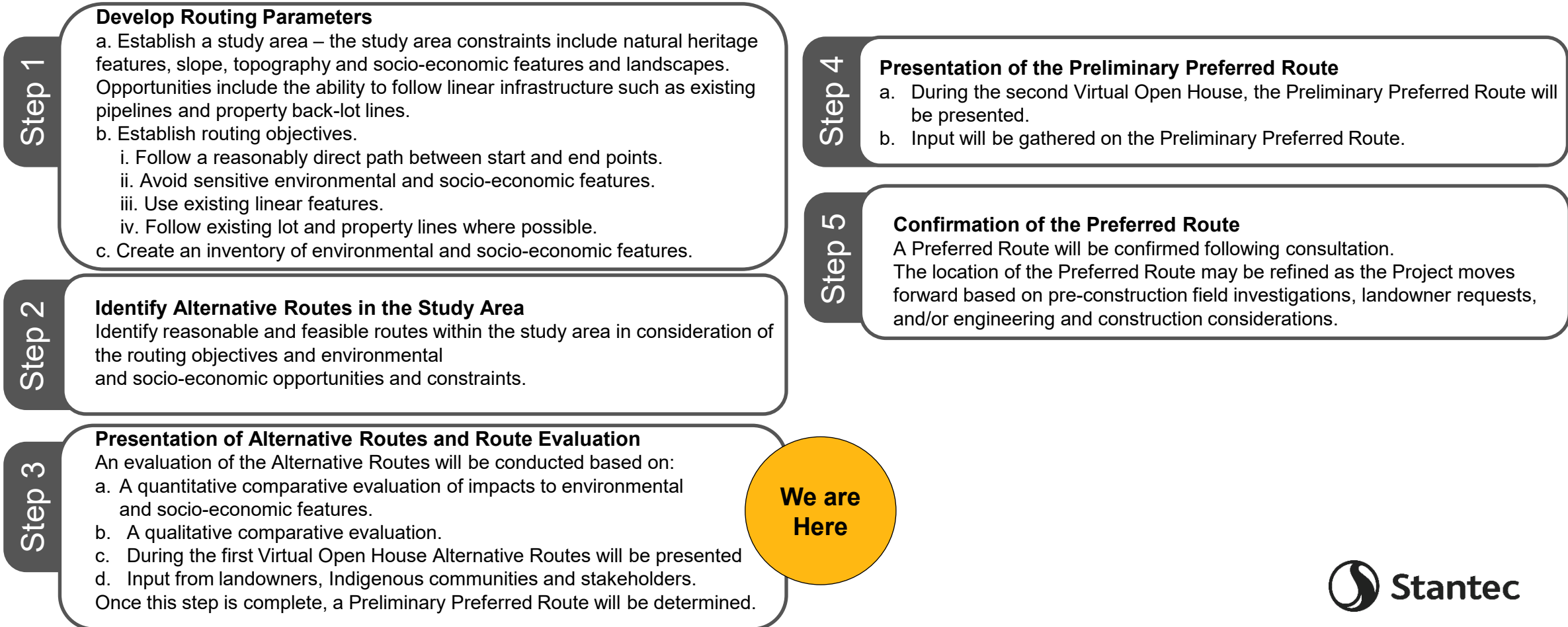
- Pipeline routing constraints include natural heritage features, slope, topography, socio-economic features, and landscapes. Opportunities include the ability to follow linear infrastructure such as existing pipelines and property back-lot lines.
- A Geographic Information System (GIS) exercise was undertaken that examined all mapped routing constraints and opportunities to generate Alternative Routes.
- The Alternative Routes traverse the rural area of the County of Lambton in St. Clair Township and the Township of Dawn-Euphemia and follow lot fabric as well as existing linear infrastructure such as road easements, existing pipeline easements and utility corridors. To the extent possible, the Alternative Routes avoid existing environmental and socio-economic features.



Dawn-Corunna Project Virtual Open House #1

Preferred Route Selection Process

The Preferred Route for the proposed pipeline will be selected through a five-step process.





Socio-economic Features

The project may be constructed through road right of way, business areas, agricultural and residential land, along with land maintained by Hydro One, and regulated by the St. Clair Region Conservation Authority.

Potential Effects

- Temporary increases in noise, dust, and air emissions.
- Increased construction traffic volumes.
- Temporary traffic restrictions and lane closures.
- Temporary impairment of the use and enjoyment of property.
- Vegetation clearing along the pipeline easement.

Example Mitigation Measures

- Provide access across the construction area.
- Restrict construction to daylight hours and adhere to applicable noise by-laws.
- Develop and implement a Traffic Control Plan.
- Place fencing at appropriate locations for safety.
- Implement a water well monitoring program.
- Provide contact information for a designated Enbridge Gas representative prior to and throughout construction.
- Dust control measures.
- Re-vegetation of cleared areas (seeding/planting).



Aquatic Resources

Enbridge Gas understands the importance of protecting wildlife during construction and therefore will implement recognized mitigation measures to reduce possible environmental effects.

Potential Effects

- Disruption and alteration to aquatic species and habitat and/or nuisance effects.
- Increased erosion, sedimentation, and turbidity resulting from removal of vegetation.

Example Mitigation Measures

- Conduct surveys of waterbodies.
- Obtain all agency permits and approvals.
- Limit in-channel construction, where possible, and conform to fish timing window guidelines.
- For in-channel construction, protect aquatic species and manage sedimentation and turbidity.
- Restore and seed areas to establish habitat and reduce erosion.
- Replant vegetation along waterways.



Terrestrial Resources

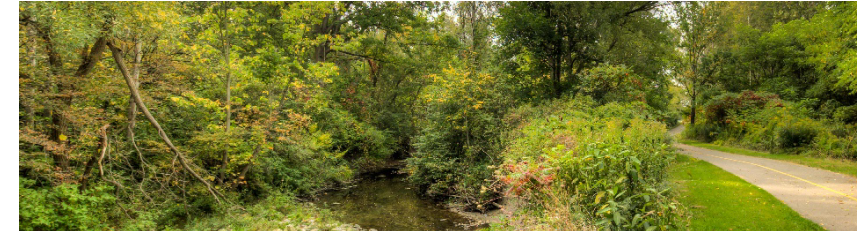
During the course of construction, natural heritage features such as wildlife habitat and vegetated/wooded areas will need to be crossed.

Potential Effects

- Damage or removal of vegetation and wildlife habitat adjacent to the construction area.
- Disturbance, nuisance, and/or mortality to local wildlife.

Example Mitigation Measures

- Conduct surveys (including Species at Risk surveys) in advance of construction to determine opportunities for wildlife habitat to exist.
- Clearly mark the construction area to avoid accidental damage.
- Restore and seed areas to establish habitat and reduce erosion.
- Secure any necessary permits and follow any conditions of approval.



Cultural Heritage Resources

During the course of construction, cultural heritage features such as archaeological finds, buildings, fences, and landscapes may be encountered. Detailed field surveys will be conducted by independent, third-party archaeologists and cultural heritage professionals.

Potential Effects

- Damage or destruction of archaeological, paleontological or historical resources.

Example Mitigation Measures

- Archaeological assessment of the construction right-of-way, with review and comment from the Ministry of Heritage, Sport, Tourism and Culture Industries (MHSTCI).
- Cultural heritage assessment (for built heritage features and cultural heritage landscapes) of the construction right-of-way, with review and comment from MHSTCI.
- Reporting of any previously unknown archaeological, paleontological or historical resources uncovered, or suspected of being uncovered, during excavation.



Agricultural Soils

Enbridge Gas has established and tested measures to preserve the integrity of agricultural soils throughout the construction phase:

- A third-party soils specialist will determine topsoil depth prior to stripping and supervise activities so the proper depth of topsoil is removed and replaced.
- Topsoil will be stripped from the right-of-way and other work areas and stockpiled along the right-of-way. A separation will be maintained between topsoil and subsoil.
- Enbridge Gas will implement a wet soil shutdown protocol on agricultural lands to minimize soil structure damage.
- The subsoil on the stripped portion of the right-of-way will be chisel ploughed or sub-soiled during cleanup activities to alleviate compaction.
- Enbridge Gas will develop and implement a sampling program on agricultural easements along the pipeline route for potential pests and/or diseases that are known to the area, where appropriate.
- The entire outside boundaries of the workspace necessary for construction of the project will be staked at regular intervals.



Maintaining Agricultural Drainage Systems

- Landowners will be contacted prior to construction to confirm the location and type of existing drains. Any future drainage plans will also be discussed with the landowner.
- Field tile will be temporarily re-routed during pre-construction activities where required for proper drainage during construction.
- Damaged and severed drains will be repaired following construction. After repair and prior to backfilling, landowners will be invited to inspect and approve the repair. Any on-going field tile issues resulting from pipeline construction will be addressed by Enbridge Gas as required.



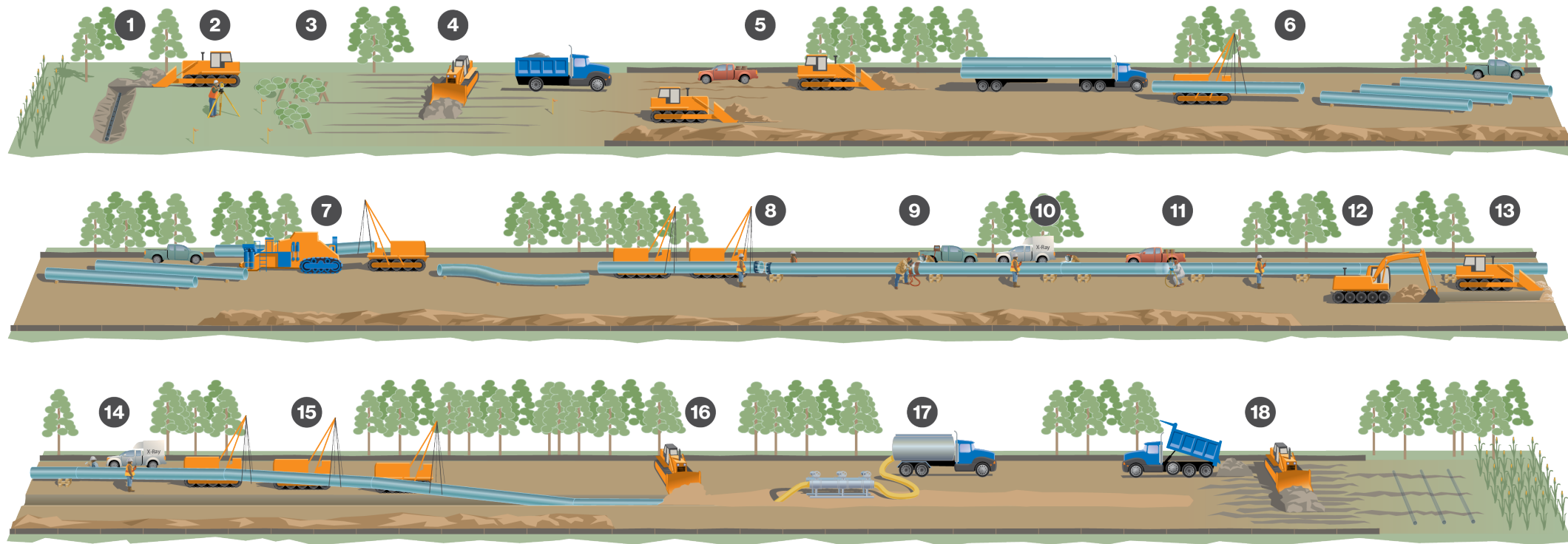
Access and Land Requirements

- Once a preferred route is selected, an Enbridge Gas Land Agent will begin discussions with landowners for the appropriate land rights necessary for the construction of the pipeline.
- Enbridge Gas anticipates that the pipeline will primarily run cross-country, traversing easements in the rural area of the County of Lambton in St. Clair Township and the Township of Dawn-Euphemia and will follow existing infrastructure, lot fabric and existing property boundaries where possible.
- Enbridge Gas is committed to working with all directly affected landowners in anticipation of acquiring early access agreements, where necessary, in order to gather essential information, including but not limited to, land survey data, environmental, archaeological and property site features, along with negotiating the necessary land rights.
- These land rights will consist of permanent easements and/or temporary land rights. The temporary land rights are only required during project construction activities.
- Enbridge Gas will have a Land Agent available to each landowner during all pipeline construction activities.
- The Land Agent will keep all landowners informed of the progress of the project and assist with any concerns that may arise as a result of the construction activities.

Dawn-Corunna Project Virtual Open House #1



Constructing an Enbridge Gas Pipeline



- | | | | | | |
|----------------------------|-----------------------------------|-----------------------|---|---|---|
| 1. Pre-construction tiling | 4. Right-of-way topsoil stripping | 7. Field bending pipe | 10. X-ray or ultrasonic inspection, weld repair | 13. Padding trench bottom | 16. Backfilling |
| 2. Surveying and staking | 5. Front-end grading | 8. Lining-up pipe | 11. Field coating | 14. Final inspection and coating repair | 17. Hydrostatic testing |
| 3. Clearing | 6. Stringing pipe | 9. Welding process | 12. Digging the trench | 15. Lowering pipe | 18. Site restoration and post-construction tiling |

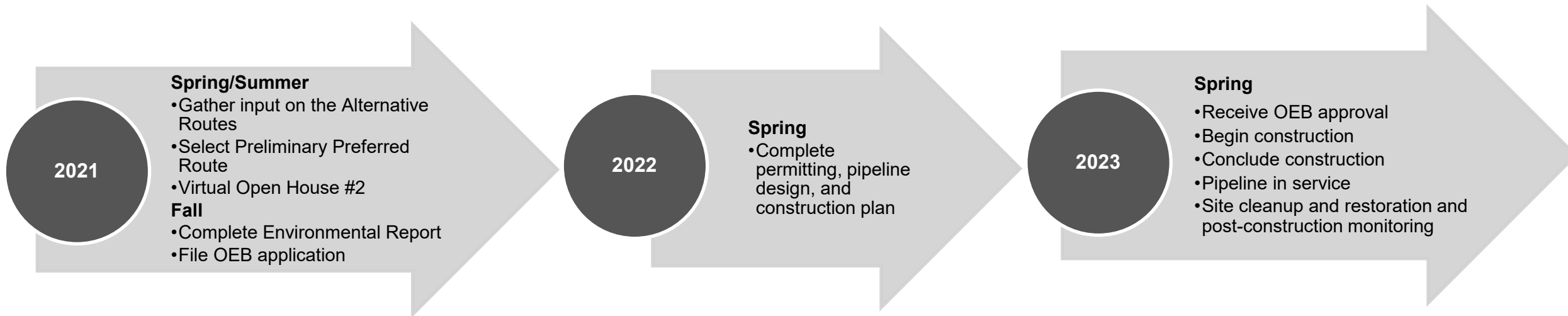


Dawn-Corunna Project Virtual Open House #1

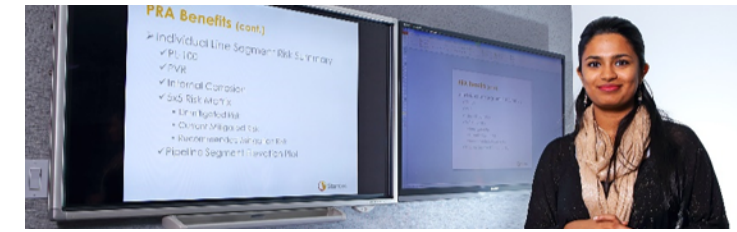


Next Steps

After this Virtual Open House, we intend to pursue the following schedule of activities:



Dawn-Corunna Project Virtual Open House #1



Thank-you!

On behalf of the Project team, thank-you for taking the time to participate in the first Virtual Open House. Please submit your comments by **June 14, 2021**, to ensure they are incorporated into the Environmental Assessment.

Comments can be submitted via the questionnaire, available in the Resources tab, or by contacting the project team using the information below.

Details on the second Virtual Open House will be announced in the future.

Emily Hartwig

Environmental Consultant

Stantec Consulting Ltd.

1-70 Southgate Drive

Guelph ON N1G 4P5

Email: dawncorunna@stantec.com

For more information about the proposed project, please visit our project website at: <https://www.Enbridgegas.com/About-Us> under “Projects”

