

Enbridge Gas Inc.
Low-Carbon Energy Project
Environmental Report Addendum #2

Prepared for:

Enbridge Gas Inc.
101 Honda Blvd.
Markham, Ontario
L6C 0M6

Prepared by:

Dillon Consulting Limited
235 Yorkland Blvd., Suite 800
Toronto, Ontario
M2J 4Y8

December 2019



TABLE OF CONTENTS

	<u>Page No.</u>
1.0 INTRODUCTION	1
2.0 FIGURES.....	2

1.0 INTRODUCTION

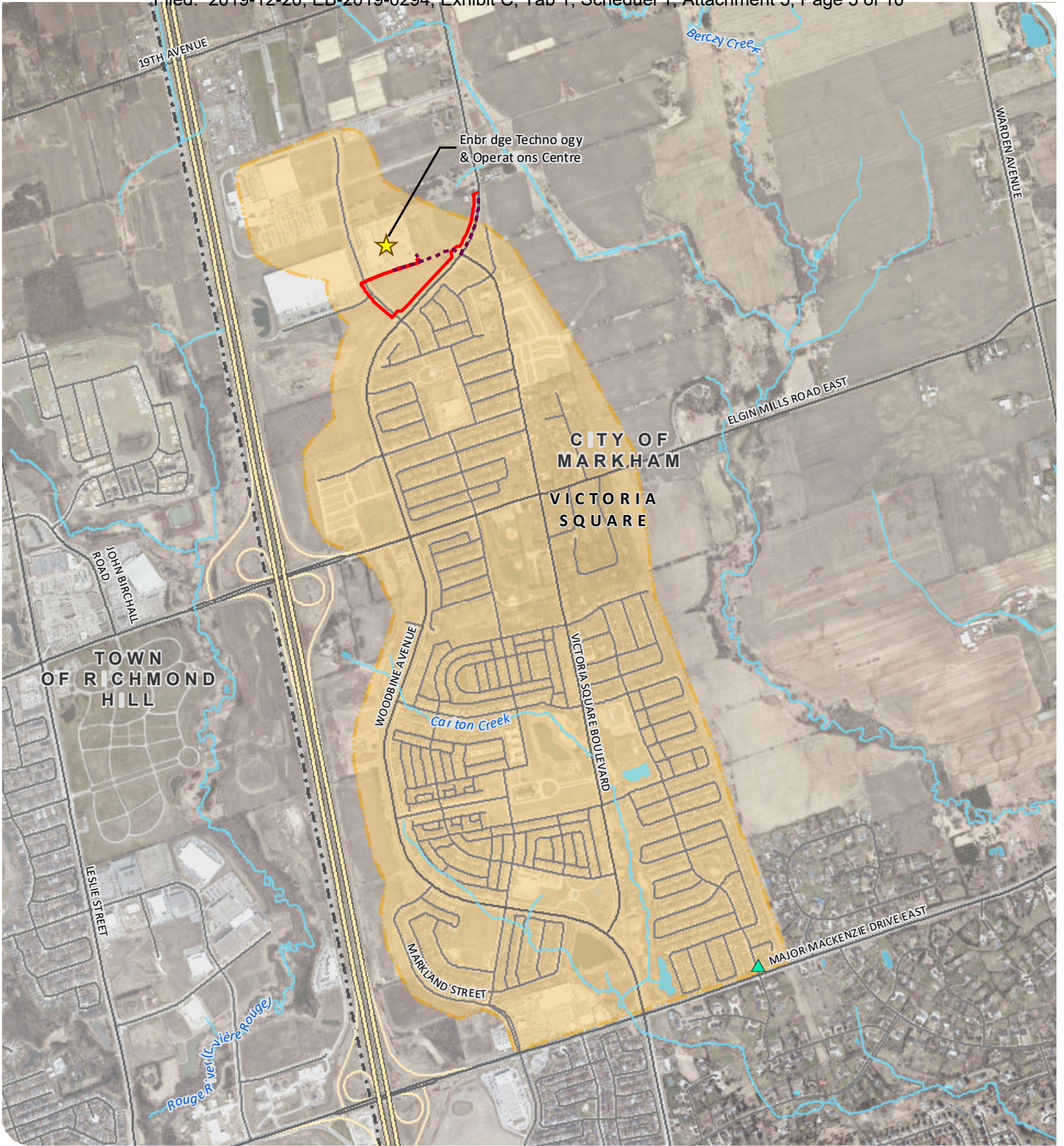
Enbridge Gas Inc. (Enbridge) retained Dillon Consulting Limited (Dillon) to undertake an environmental and cumulative effects assessment for the proposed Low-Carbon Energy Project (the Project), which consists of the construction and operation of approximately 6.7 kilometers (km) of natural gas pipeline in the City of Markham.

This document serves as the second Addendum to the Environmental Report and provides updated figures showing only Phase 1 of the Project.

The updated figures provided in this Addendum do not result in any material changes to the content or conclusions of the environmental and cumulative effects assessment provided in the Environmental Report.

2.0 FIGURES

Updated figures showing only Phase 1 of the Project are provided below. Figures 1, 3, 4, 5, and 9, as well as the mitigation map from Appendix B of the Environmental Report, have been updated to reflect only the Phase 1 routing and study areas.



ENBRIDGE GAS INC.

LOW-CARBON ENERGY PROJECT

PROPOSED PIPELINE ROUTES

FIGURE 1

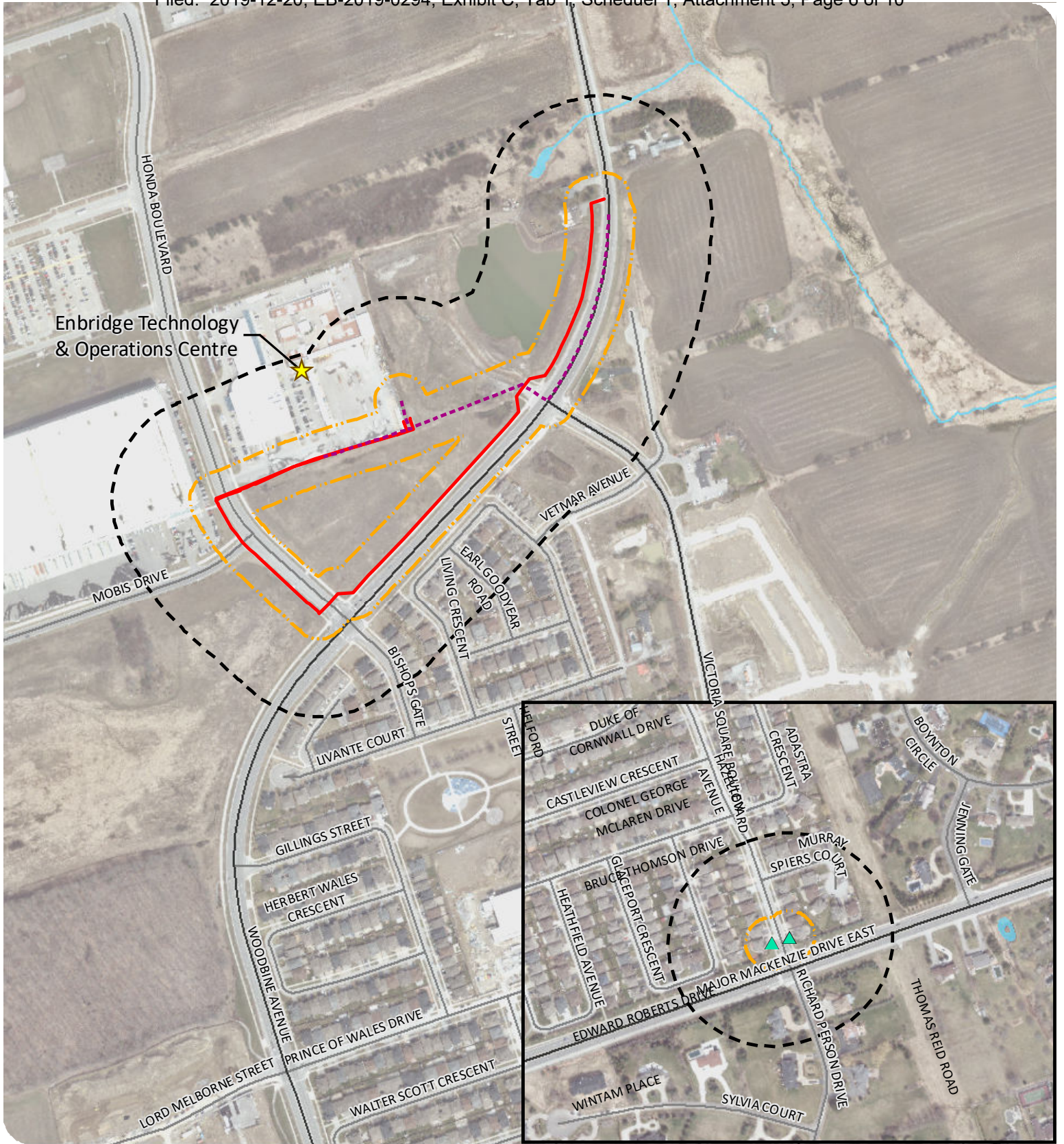


- ▲ Phase 1 Disconnect / Reconnect Location
- Preliminary Preferred Route - Phase 1
- - - Alternative Route - Phase 1
- Phase 1 Blended Gas Distribution Area
- Rail
- Watercourse
- Waterbody
- Municipal Boundary



MAP DRAWING INFORMATION:
 DATA PROVIDED BY MNR, YORK REGION
 MAP CREATED BY: LK
 MAP CHECKED BY: AL
 MAP PROJECTION: NAD 1983 UTM Zone 17N
 FILE LOCATION: I:\GIS\189005 - Enbridge





ENBRIDGE GAS INC.

LOW-CARBON ENERGY PROJECT

STUDY AREAS

FIGURE 3

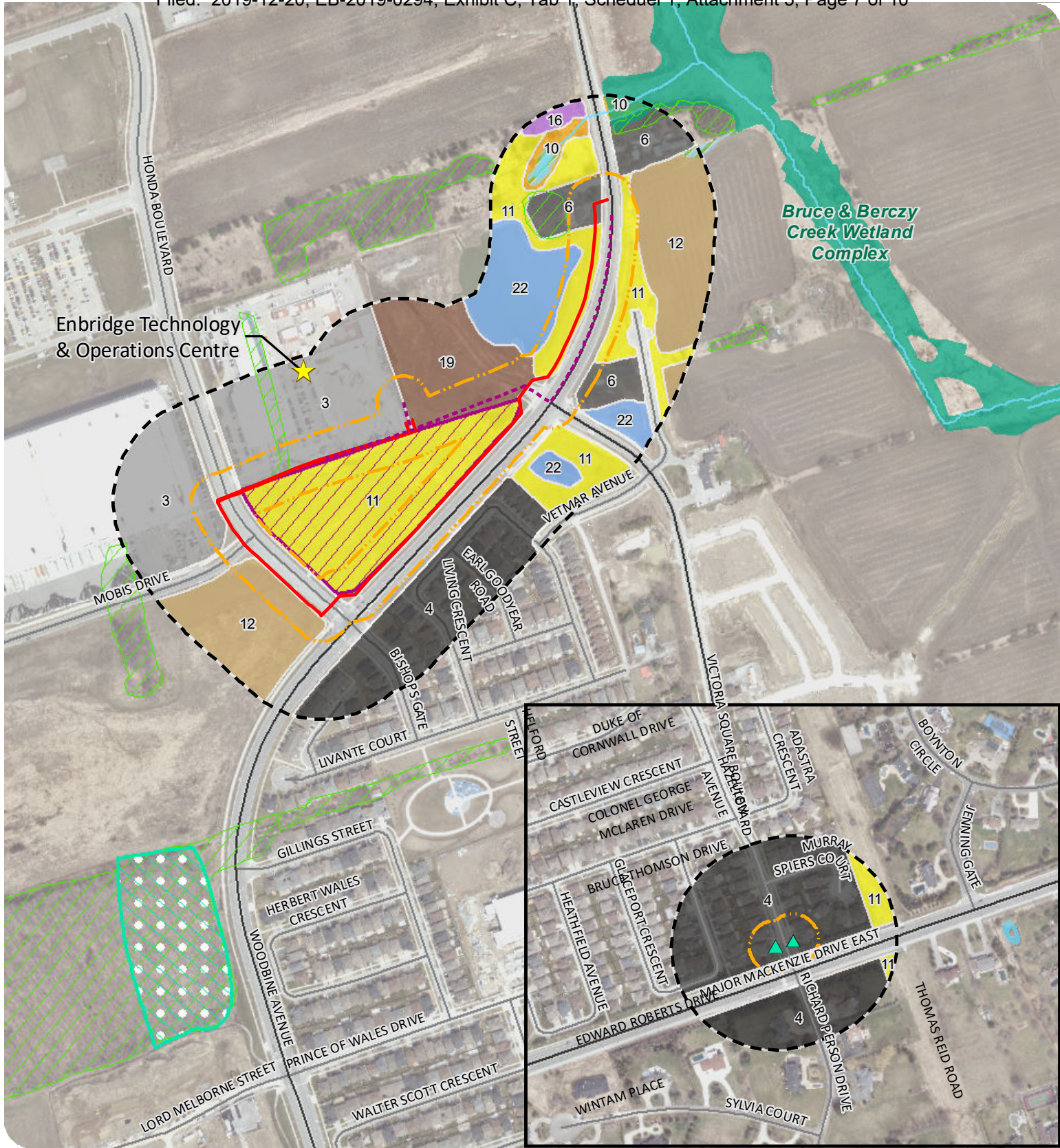


- ▲ Disconnect / Reconnect Location
- Preliminary Preferred Route
- - - Alternative Route
- Project Study Area (120 m)
- Project Footprint (30 m)
- |— Rail
- Watercourse
- Waterbody



MAP DRAWING INFORMATION:
 DATA PROVIDED BY MNRF, YORK REGION
 MAP CREATED BY: LK
 MAP CHECKED BY: AL
 MAP PROJECTION: NAD 1983 UTM Zone 17N
 FILE LOCATION: I:\GIS\18\9005 - Enbridge





ENBRIDGE GAS INC.

LOW-CARBON ENERGY PROJECT

NATURAL ENVIRONMENT FEATURES

FIGURE 4



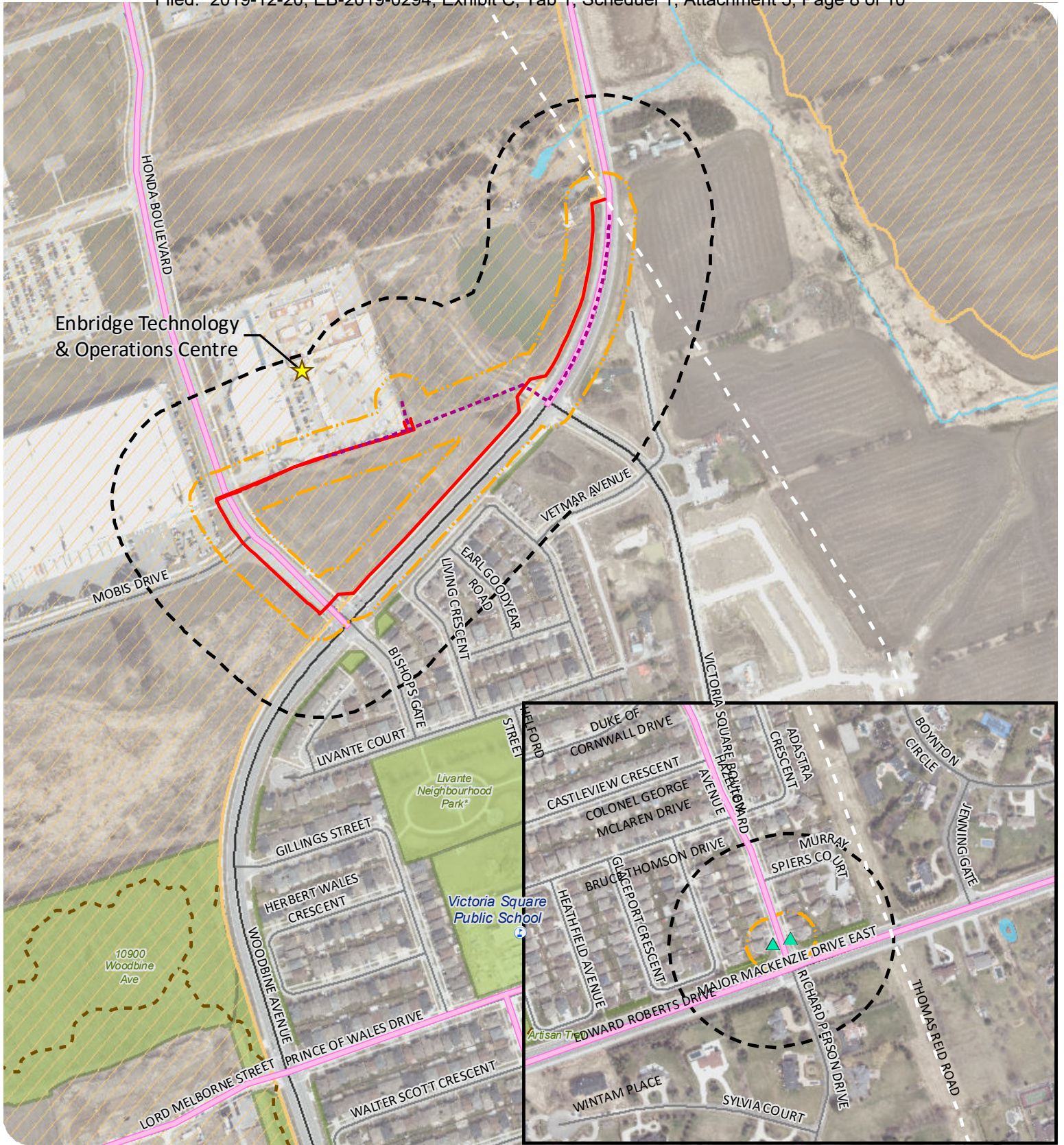
- | | | | |
|---------------------------------|---|---|------------------------------------|
| Disconnect / Reconnect Location | Unevaluated Wetland | Potential Grassland Breeding Bird Habitat | 11. MEM: Mixed Meadow |
| Preliminary Preferred Route | Provincially Significant Wetland | Ecological Land Classification | 12. OAGM:1: Annual Row Crop |
| Alternative Route | Wooded Area (MNRF) | 3. CVC: Commercial and Institutional | 16. THD: Deciduous Thicket |
| Project Study Area (120 m) | Candidate Habitat Species of Conservation Concern | 4. CVR_1: Low Density Residential | 19. Disturbed Ground |
| Project Footprint (30 m) | Candidate SAR Bat Habitat and Significant Wildlife for Bat Maternity Colonies | 6. CVR_4: Rural Property | 22. Stormwater Management Facility |
| Watercourse | | 10. MAM: Meadow Marsh | |
| Waterbody | | | |



MAP DRAWING INFORMATION:
 DATA PROVIDED BY: MNR, YORK REGION
 MAP CREATED BY: LK
 MAP CHECKED BY: AL
 MAP PROJECTION: NAD 1983 UTM Zone 17N
 FILE LOCATION: I:\GIS\189005 - Enbridge

SCALE 1:6,000

PROJECT: 18-9005 STATUS: DRAFT DATE: 2019-12-03



ENBRIDGE GAS INC.

LOW-CARBON ENERGY PROJECT

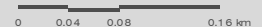
SOCIO-ECONOMIC FEATURES

FIGURE 5



MAP DRAWING INFORMATION:
 DATA PROVIDED BY MNR, YORK REGION
 MAP CREATED BY: LK
 MAP CHECKED BY: AL
 MAP PROJECTION: NAD 1983 UTM Zone 17N
 FILE LOCATION: I:\GIS\189005 - Enbridge

SCALE 1:6,000





© The Regional Municipality of York

ENBRIDGE GAS INC.

LOW-CARBON ENERGY PROJECT

PREFERRED ROUTE

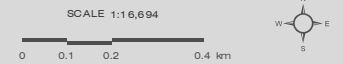
FIGURE 9



- | | | |
|--------------------------------|-------------|--------------------|
| Disconnect/Reconnect Location | Ramp | Waterbody |
| Preferred Route | Major Road | Municipal Boundary |
| Rail | Minor Road | |
| Expressway / Highway / Freeway | Watercourse | |



MAP DRAWING INFORMATION:
 DATA PROVIDED BY MNRF, YORK REGION
 MAP CREATED BY: LK
 MAP CHECKED BY: AL
 MAP PROJECTION: NAD 1983 UTM Zone 17N
 FILE LOCATION: I:\GIS\189005 - Enbridge



PROJECT: 18-9005 STATUS: DRAFT DATE: 2019-12-03



⊗ **Potential Crossing of Watercourse or Wetland.** Crossing technique (open cut or trenchless) to be determined during construction detailed design process having regard for the engineering technical feasibility of construction and natural features. All watercourses to be crossed shall be prepared and constructed according to permit conditions established by the local conservation authority. Construction activities at watercourses to occur within timing windows noted within the legend. Refer to Section 12.1.2 and Section 15.0 of the Enbridge Construction and Maintenance Manual, 2019. No vehicle or equipment refuelling within 100 metres of the watercourse or wetland, unless otherwise approved by Enbridge Environment Department. Clean up of all watercourse and wetland crossings shall be completed to the satisfaction of the conservation authority and Environmental Inspector.

⊗ **Potential Road or Rail Crossing.** For minor road crossings, open-cut or trenchless crossings will be applied. Contact the local region or municipality. Enbridge to develop a Traffic Management Plan to ensure that traffic is maintained while the crossing is conducted. Flag persons will be provided as required. Refer to Section 18.0 of the Enbridge Environmental Construction and Maintenance Manual, 2019.

⊗ **Candidate Significant Wildlife Habitat.** These areas are known to contain Significant Wildlife Habitat. Abide by restricted activity periods and mitigation measures in Table 7.

ENBRIDGE GAS INC.
LOW-CARBON ENERGY PROJECT

MITIGATION MAP

APPENDIX B



- ▲ Disconnect / Reconnect Location
- Preferred Route
- Project Footprint (30 m)
- Watercourse
- Waterbody
- Unevaluated Wetland
- Provincially Significant Wetland

* As identified in the TRCA's 2010 Draft Rouge River Watershed Management Plan.



MAP DRAWING INFORMATION:
DATA PROVIDED BY MNR, YORK REGION
MAP CREATED BY: LK
MAP CHECKED BY: AL
MAP PROJECTION: NAD 1983 UTM Zone 17N
FILE LOCATION: I:\GIS\189005 - Enbridge

