

# Sandford Community Expansion Project

Welcome to our virtual open house

March 20 to April 2, 2023



# Navigating the virtual open house

Visit the virtual open house at [www.SandfordEA.ca](http://www.SandfordEA.ca) for the following materials.

- This presentation;
- An audio-video file of this presentation;
- A transcript of this presentation;
- A high-resolution map of the project; and
- A comment form

We encourage you to submit the online comment form through the virtual open house website once you have reviewed the materials.

You can also download and submit the PDF version of the comment form by email or contact us to submit comments by another means.

**The virtual open house will be hosted on the website from  
March 20 to April 2, 2023**

# Purpose of the project and virtual open house

Enbridge Gas Inc. (Enbridge) is proposing a community expansion pipeline project to meet the increased demand for energy in Durham Region.

Consultation with Indigenous communities and engagement with stakeholders are fundamental components of the planning and environmental study for the project.

The purpose of the virtual open house is to provide:

- Information about the project.
- Opportunity to ask questions and provide feedback.

All feedback and input received will be used to:

- Inform the selection of the preferred route option; and
- Identify potential issues and site-specific mitigation, if required.

# Enbridge Indigenous Peoples Policy

**Enbridge recognizes the diversity of Indigenous Peoples who live where we work and operate. We understand that the history of Indigenous Peoples has had destructive impacts on the social and economic wellbeing of Indigenous Peoples. Enbridge recognizes the importance of reconciliation between Indigenous communities and the broader society. Positive relationships with Indigenous Peoples, based on mutual respect and focused on achieving common goals, will create constructive outcomes for both Indigenous communities and for Enbridge.**

Enbridge commits to pursuing sustainable relationships with Indigenous Nations and groups in proximity to where Enbridge conducts business. To achieve this, Enbridge will govern itself by the following principles:

- **We recognize** the legal and constitutional rights possessed by Indigenous Peoples, and the importance of the relationship between Indigenous Peoples and their traditional lands and resources. We commit to working with Indigenous communities in a manner that recognizes and respects those legal and constitutional rights and the traditional lands and resources to which they apply, and we commit to ensuring that our projects and operations are carried out in an environmentally responsible manner.
- **We recognize** the importance of the United Nations Declaration on the Rights of Indigenous Peoples (UNDRIP) within the context of existing Canadian law and the commitments that the government has made to protecting the rights of Indigenous Peoples.



# Enbridge Gas Indigenous Peoples Policy

- **We engage** in forthright and sincere consultation with Indigenous Peoples about Enbridge's projects and operations through processes that seek to achieve early and meaningful engagement so their input can help our projects that may occur on lands traditionally used by Indigenous Peoples.
- **We commit** to working with Indigenous Peoples to achieve benefits for them resulting from Enbridge's projects and operations, including opportunities in training and education, employment, procurement, business development, and community development.
- **We foster** understanding of the history and culture of Indigenous Peoples among Enbridge's employees and contractors, in order to create better relationships between Enbridge and Indigenous communities.

**This commitment is a shared responsibility involving Enbridge and its affiliates, employees and contractors, and we will conduct business in a manner that reflects the above principles. Enbridge will provide ongoing leadership and resources to ensure the effective implementation of the above principles, including the development of implementation strategies and specific action plans.**

**Enbridge commits to periodically review this policy so that it remains relevant and respects Indigenous culture and varied traditions.**



# Project overview

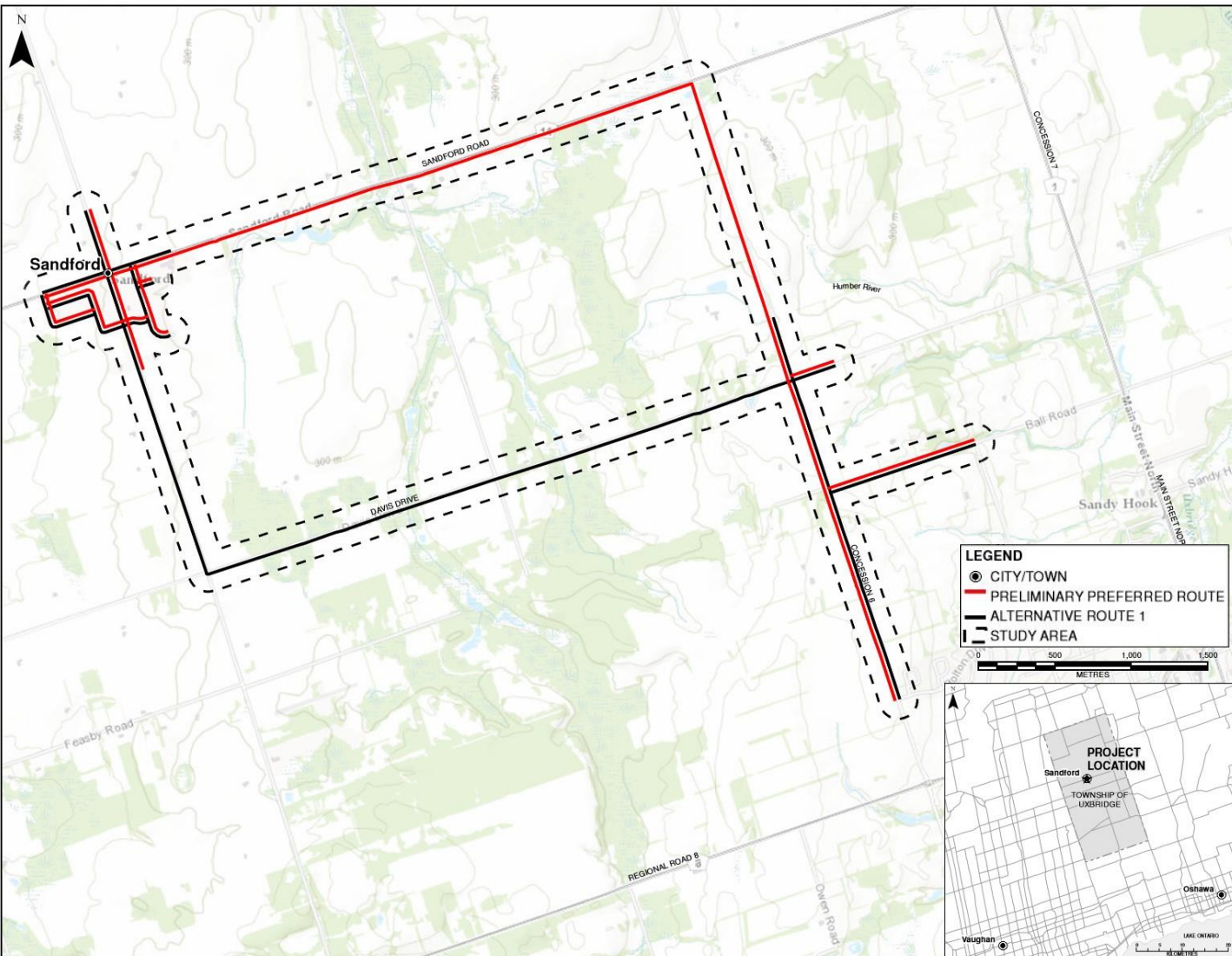
To provide access to gas distribution services to customers located in Uxbridge, Ontario, two routes approximately 13 km in length are being considered for the Sandford Community Expansion Project.

**Preliminary Preferred Route (PPR):** consists of a 4-inch natural gas pipeline commencing on 6<sup>th</sup> Concession Road south of Ball Road and extending north to Sandford Road. The pipeline continues west along Sandford Road toward the community of Sandford.

**Alternative Route (AR):** consists of a 4-inch natural gas pipeline commencing on 6<sup>th</sup> Concession Road south of Ball Road and extending north to Davis Drive. The pipeline continues west along Davis Drive to Concession Road 4 where it then extends north to the community of Sandford.

Both options would include a 2-inch natural gas distribution pipeline along Ball Road and within the community of Sandford to service subdivisions.

A station is required and included in the Project scope.



# Ontario Energy Board review and approval process

An Environmental Study is being completed for the project and an Environmental Report will be prepared in accordance with the Ontario Energy Board's (OEB) *Environmental Guidelines for the Location, Construction and Operation for Hydrocarbon Pipelines and Facilities in Ontario*. These guidelines provide the planning requirements for new projects and the mitigation required for the construction of these projects.



## Who is the OEB?

- The OEB is the body that regulates the natural gas industry in Ontario to ensure that the public interest is served and protected. Once the Environmental Report is completed and the comment period has ended, Enbridge Gas will file an application for a Leave to Construct for the project with the OEB for approval.
- The OEB may order a written or oral hearing based upon the complexity of the project and the level of public concern. Members of the public will be invited by the OEB to participate in the hearing. The OEB will then make a decision about the application.
- Construction of the project can only proceed if the Leave to Construct is approved by the OEB.

# Environmental study and approval process

## *Phase 1 - Planning*

- Identify feasible route alternatives and study areas
- Notify Indigenous communities and stakeholders
- Understand existing environmental conditions
- Complete field studies

We are here

## *Phase 2 - Evaluation*

- Hold virtual open house
- Evaluate route alternatives
- Select preferred route
- Identify potential effects and mitigation based on the preferred route
- Assess cumulative effects
- Complete Environmental Report

## *Phase 3 - Approvals*

- Submit Environmental Report to Ontario Pipeline Coordinating Committee
- File application for Leave to Construct with OEB
- OEB Hearing and Decision
- Obtain other permits and approvals

Ongoing consultation with Indigenous communities and engagement with stakeholders



# Selection of the preferred route

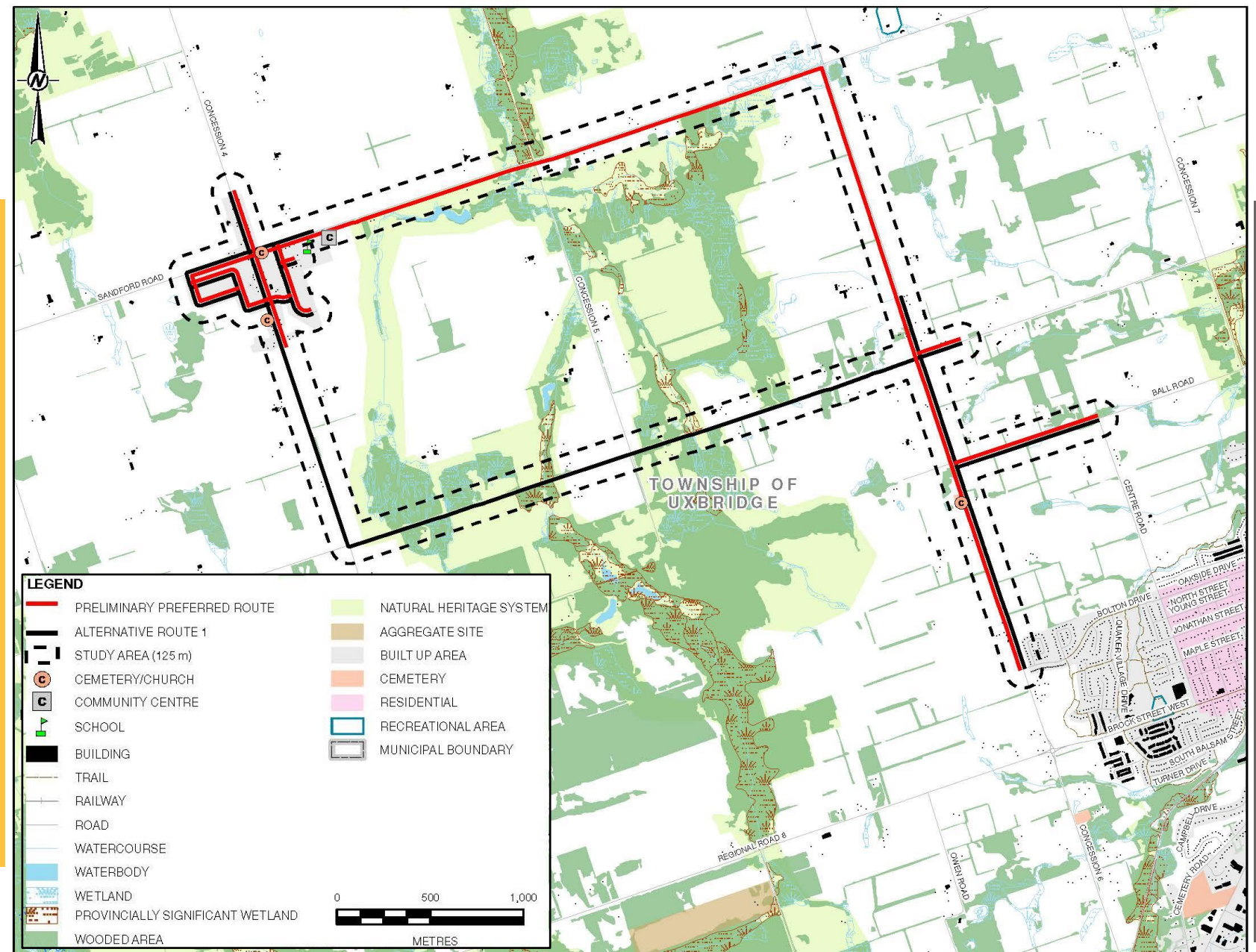
**The selection of the preferred route involves a comparative evaluation of the route alternatives, including the following:**

- Collection of information about existing conditions.
- Consideration of the following:
  - Environmental features (e.g., sensitive biophysical features).
  - Social and cultural heritage features (e.g., existing and future land use, heritage resources).
  - Technical constraints and benefits (e.g., existing linear corridors, reliability of gas supply, safety).
  - Economic impacts or benefits.
- Identification of the potential adverse environmental and socio-economic effects of each route alternative.
- Consideration of Indigenous and stakeholder input.

# Environmental study findings

- The desktop research and field studies considered the biophysical, socio-economic, and cultural environments.
- Understanding the existing conditions helps to identify the potential for environmental or social effects.
- Mitigation measures, including avoidance, will be confirmed once the preferred route is selected, and input is received from interested parties.
- The results of the environmental study will be documented in the Environmental Report.

# Study area features

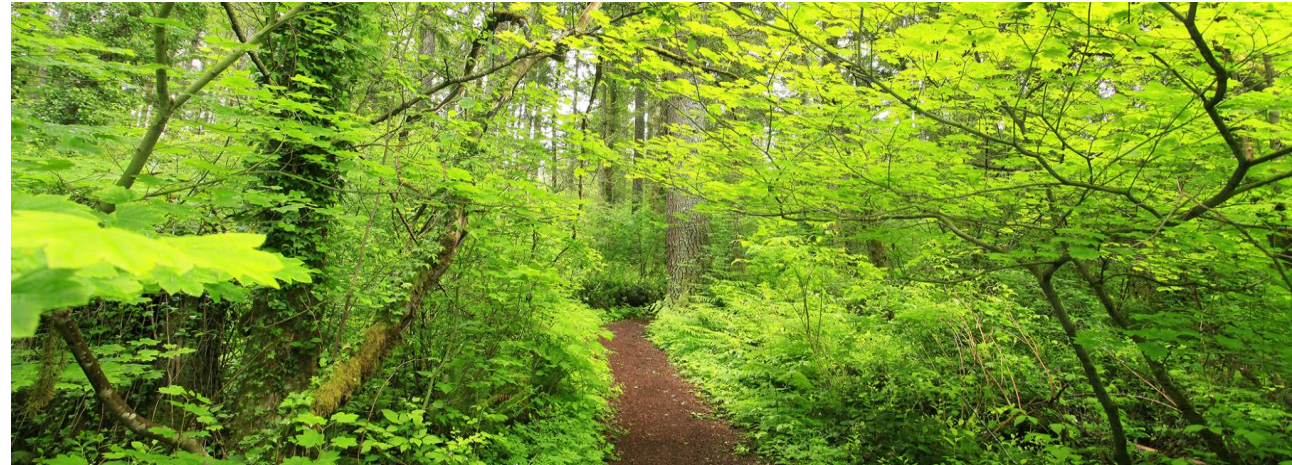




# Biophysical environment

Features found within the study areas (both routes) include:

- Watercourses.
- Fish habitat.
- Wetlands, including provincially significant wetlands.
- Wooded areas, including significant woodlands.
- Potential species at risk habitat.
- Potential significant wildlife habitat.





# Biophysical environment



*Example showing restoration works on another Enbridge Gas project*



**Mitigation measures** may include:

- Minimize temporary workspace areas and clearing of existing vegetation.
- Avoid vegetation clearing during the migratory bird nesting season.
- Avoid impacts to watercourses and wetlands by using horizontal directional drilling (HDD).
- Follow guidelines on fish timing windows.
- Implement erosion and sediment control measures.
- Clean up and restore construction areas as soon as possible after construction.

**Potential effects** may include removal of vegetation, temporary alteration of wildlife habitat during construction, and increased erosion and sedimentation.



# Geology, Soils and Groundwater

## Features found within both study areas include:

- Local surficial geology consisting of silty to sandy glacial deposits that have formed sandy loam soils with good to moderate agricultural capability.
- Most properties in the area rely on private wells for water supply.
- Some areas along the routes are considered significant groundwater recharge areas and limited areas are considered highly vulnerable aquifer areas.

## Mitigation measures include:

- Implementation of specific mitigation measures to protect soils from erosion and contamination during stripping, storage and reinstatement activities.
- Implementation of best management practices to govern working around groundwater, the storage of materials, fueling operations, equipment checks and maintenance.



# Socio-economic environment

Features found within the study areas include:

- **Both Routes**
  - Rural, residential, and agricultural land.
  - Environmental Protection Area (the Sandford Wetland Complex).
  - No conservation areas or official/marked trails.
  - No railways or transmission lines.
  - Located within the existing road allowance.
  - Emergency, waste management, and healthcare service in Uxbridge.
  - 1 church and 2 cemeteries.
- **Preliminary Preferred Route:**
  - 18 businesses/facilities
  - 17 road crossings
  - 1 school
- **Alternative Route:**
  - 19 businesses/facilities
  - 19 road crossings
  - Slightly lower residential land use (1 ha).





# Socio-economic environment



Mitigation measures may include:

- Compliance with municipal noise by-laws and land use plans.
- Implement best management practices to minimize noise and dust emissions.
- Develop and implement a traffic control and protection plan.
- Provide in advance, the schedule for road closures and construction to municipalities, directly affected and adjacent property owners and businesses.
- Repair impacts to public roadways, sidewalks or other paved areas.

Potential temporary effects may include:

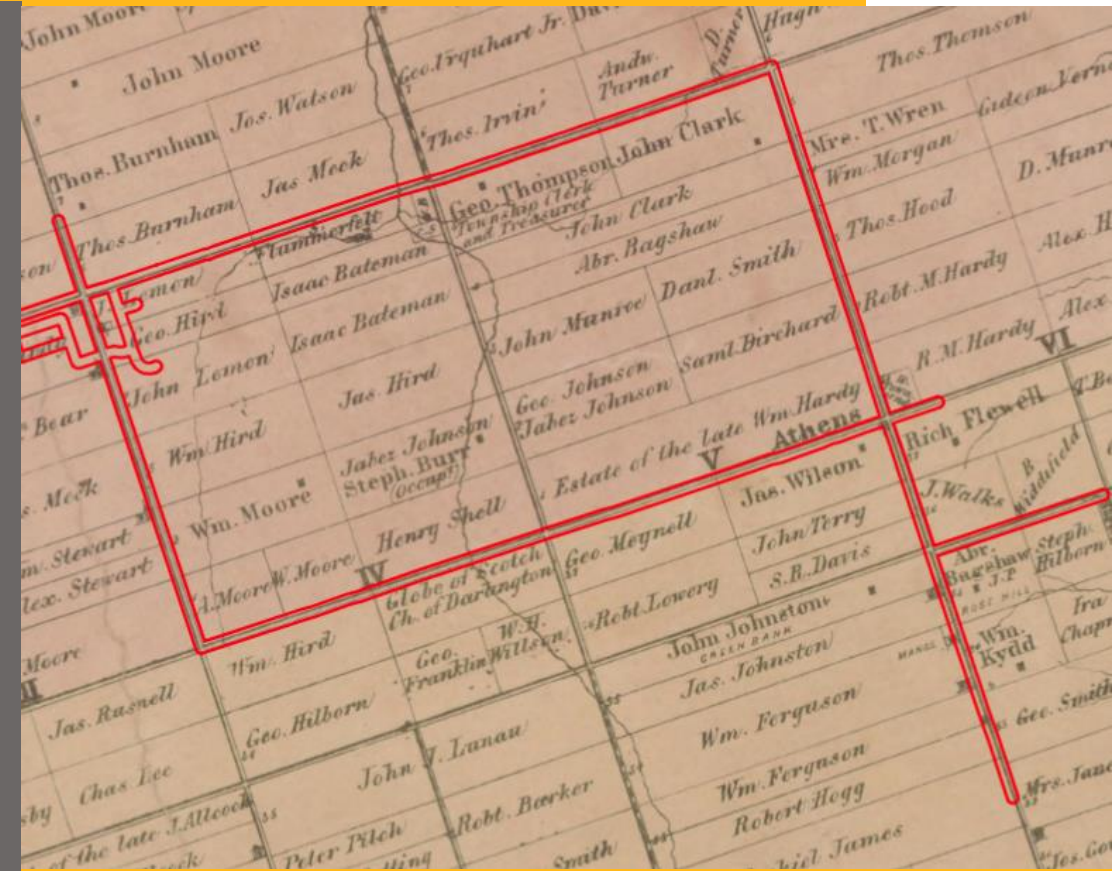
- Nuisance effects such as noise and dust.
- Road or lane closures and increased traffic volume.
- Temporary limited access to recreational, community or institutional facilities and commercial businesses along the road where construction occurs.
- Disturbances to some agricultural operations.



# Cultural environment

## Cultural Heritage:

- A review of known cultural heritage resources was undertaken using mapping, municipal registries, and communication with municipal and provincial heritage planning staff.
- A Ministry of Citizenship and Multiculturalism *Criteria for Evaluating Potential for Built Heritage Resources and Cultural Heritage Landscapes* checklist was then completed.
- A Cultural Heritage Report: Existing Conditions and Preliminary Impact Assessment is recommended.

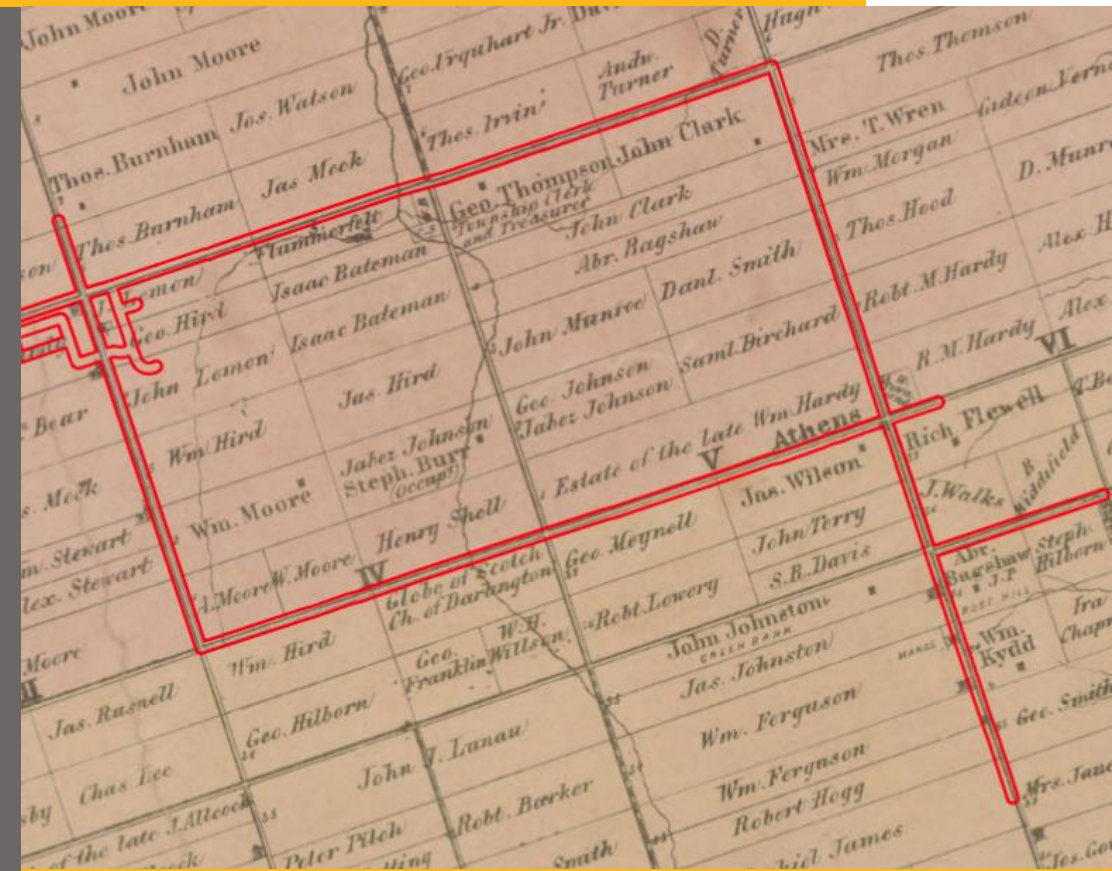


**A portion of the 1860 Map of Ontario County depicting the landscape of the Study Area in the mid 19<sup>th</sup> Century.**

# Cultural environment

## Archaeology:

- Background research, conducted as part of the Stage 1 Archaeological Assessment, identified areas that have potential for archaeological resources along both route options.
- Areas that have had deep and widespread disturbance in the road allowances are not likely to have archaeological potential.
- Archaeological potential will be confirmed through a property inspection in the spring of 2023.
- Areas previously assessed within the route options do not have archaeological potential and do not require further assessment.

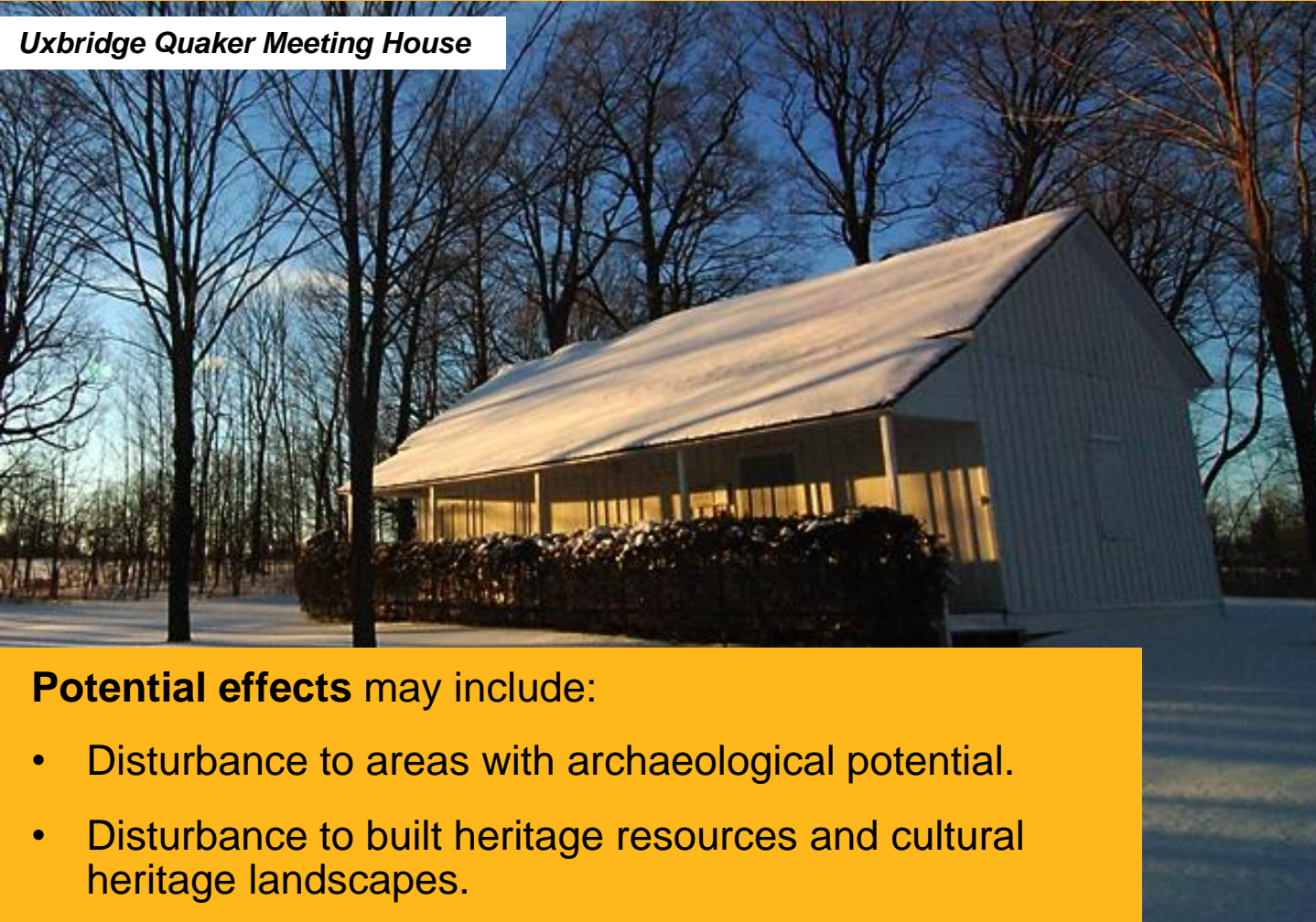


**A portion of the 1860 Map of Ontario County depicting the landscape of the Study Area in the mid 19<sup>th</sup> Century.**



# Cultural environment

*Uxbridge Quaker Meeting House*



## Mitigation measures include:

- Complete further studies in areas that have archaeological potential (i.e., Stage 2 archaeological assessment) along the preferred route, prior to construction.
- Complete a Cultural Heritage Report: Existing Conditions and Preliminary Impact Assessment to identify and assess potential impacts to known and potential cultural heritage resources.
- If previously undocumented archaeological resources are discovered during construction, cease construction immediately, engage a licensed archaeologist to carry out further archaeological studies, and report the findings.

## Potential effects may include:

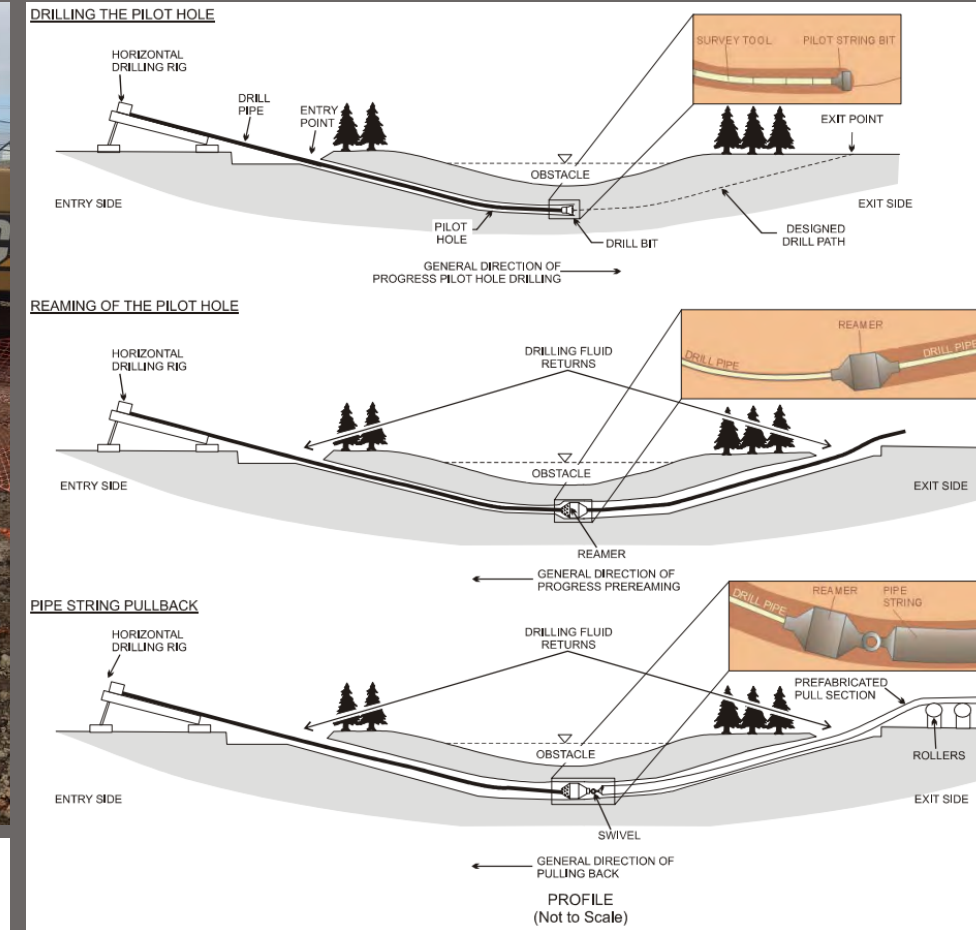
- Disturbance to areas with archaeological potential.
- Disturbance to built heritage resources and cultural heritage landscapes.

# Horizontal directional drilling (HDD)

- The project is expected to involve pipeline crossings under watercourses using HDD installation methods. Specific locations shall be determined in the environmental studies.
- HDD is typically used for working in the vicinity of or crossing sensitive environmental features, such as watercourses or wetlands. HDD is chosen as a construction technique to reduce or avoid environmental impact.
- HDD involves digging entry and exit pits outside the sensitive feature and using a drilling rod and drilling fluid to install the pipeline under the sensitive feature. Using advanced technology and highly trained technicians, the drill head guides the pipe electronically to ensure the angle, depth, and exit point adhere to carefully designed engineering plans.



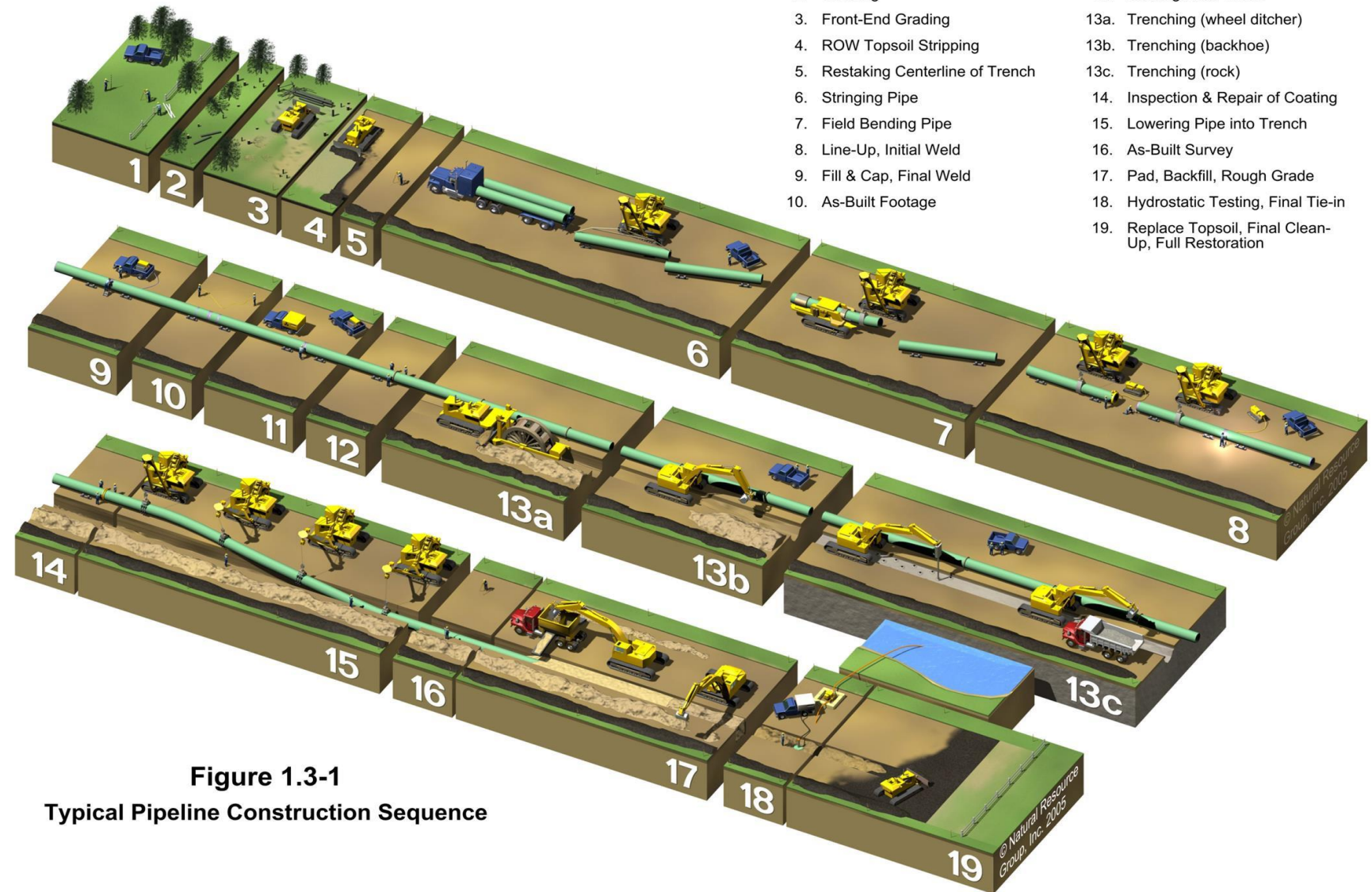
**Example of Horizontal Directional Drilling work on a similar project.**





## Typical pipeline design and construction

- Enbridge Gas pipelines are designed to meet or exceed the regulations of the Canadian Standards Association (Z662 Oil and Gas Pipeline Systems) and the applicable regulations of the Technical Standards & Safety Association.
- Construction activities are temporary and transitory.
- After construction, Enbridge Gas takes many steps to ensure safe, reliable operation of the network of our natural gas pipelines.



**Figure 1.3-1**  
Typical Pipeline Construction Sequence

Used By Permission Natural Resource Group, Inc. © 2010

# Our commitment to environment, health and safety

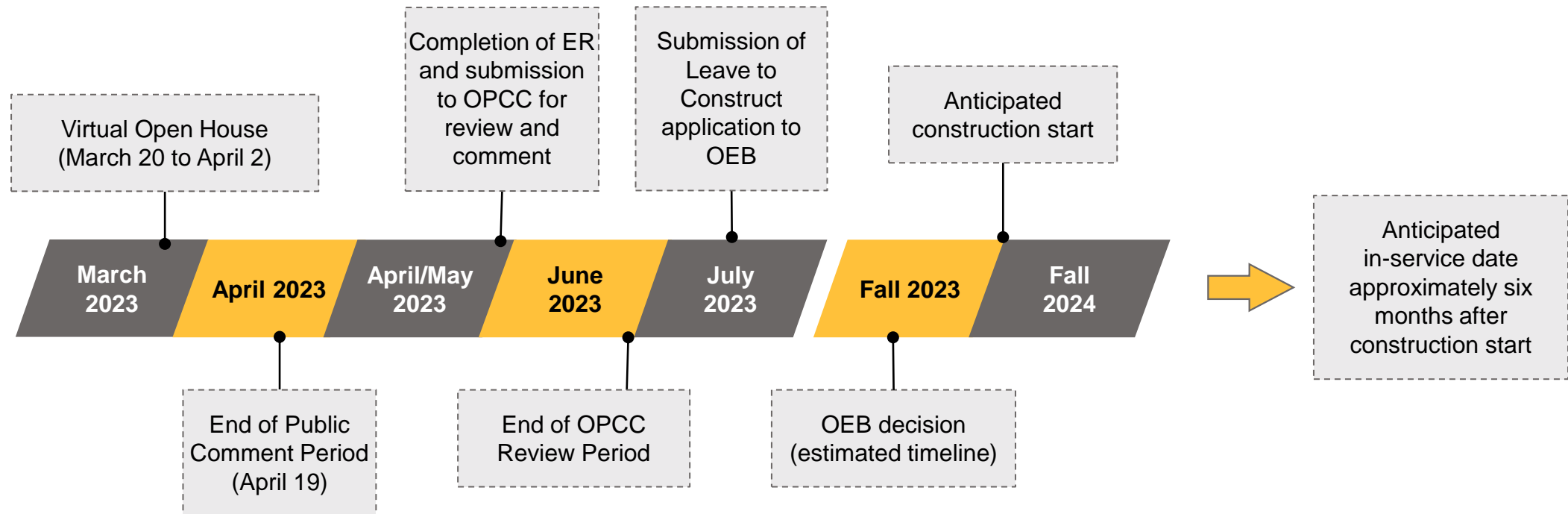


- **We are committed** to working with residents and businesses in the area on construction planning, mitigation measures and post-construction monitoring.
- **We are committed** to ensuring areas that are impacted during construction are restored as close to pre-construction condition as possible.
- **We are committed** to applying mitigation measures to prevent or reduce the level of impact. We will work with the residents and business owners to ensure issues are resolved collaboratively.
- **We are committed** to protecting the health and safety of all individuals affected by our activities. The safety of the public, our communities and our employees is our top priority.
- **We are committed** to safety in our processes, our people and our technologies, to ensure the safe construction and operation of our pipelines. We continually perform routine maintenance and, if required, implement repairs or other actions across our entire pipeline system.



# Proposed project timeline

The Environmental Study is underway. It is anticipated that the Environmental Report (ER) will be submitted to the Ontario Pipeline Coordinating Committee (OPCC) for review in May 2023.





# Next steps – submit your comments!



Please fill out the comment form online or submit by email



Email: [SandfordEA@wsp.com](mailto:SandfordEA@wsp.com)



End of comment period: April 19, 2023

*All comments and questions submitted for this project will be collected and considered in the development of an Environmental Report that will be part of the public record and will be made available to individuals or organizations with an interest in this project. Under the Freedom of Information and Protection Privacy Act, personal information such as name and address will not be included in the Environmental Report but may be released, if requested in accordance with the Act, to any person as part of the review of the Environmental Report.*

**Thank you!**

**Thank you for participating in the virtual open house  
for the Sandford Community Expansion Project!**

If you have comments or questions, please contact:

**Aisha Lewis, WSP**

**Telephone: 416-565-1537**

**Kelsey Mills, Enbridge Gas**

**Telephone: 416-768-1040**

**Email: [SandfordEA@wsp.com](mailto:SandfordEA@wsp.com)**

**Project Website: [enbridgegas.com/SandfordCE](http://enbridgegas.com/SandfordCE)**

