

- Proposed Station Rebuild
- Proposed Station (Approximate)
- Alternative Route 1
- Expressway / Highway
- Major Roads
- Railway

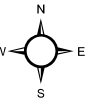
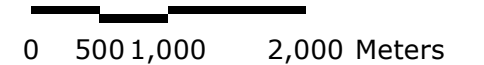
**ALTERNATIVE ROUTE 1**

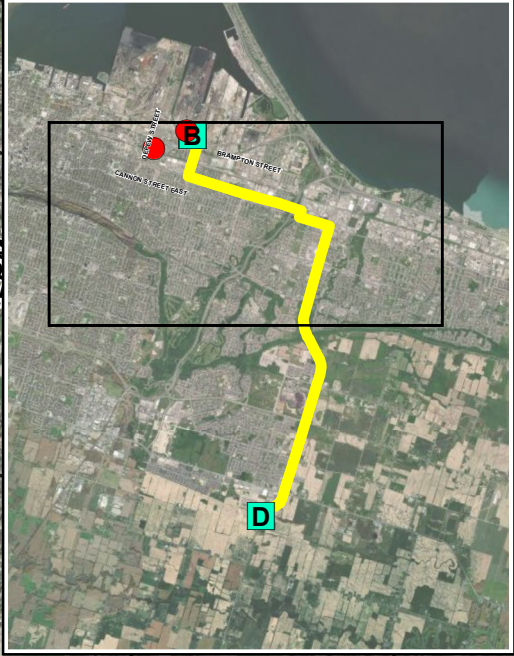
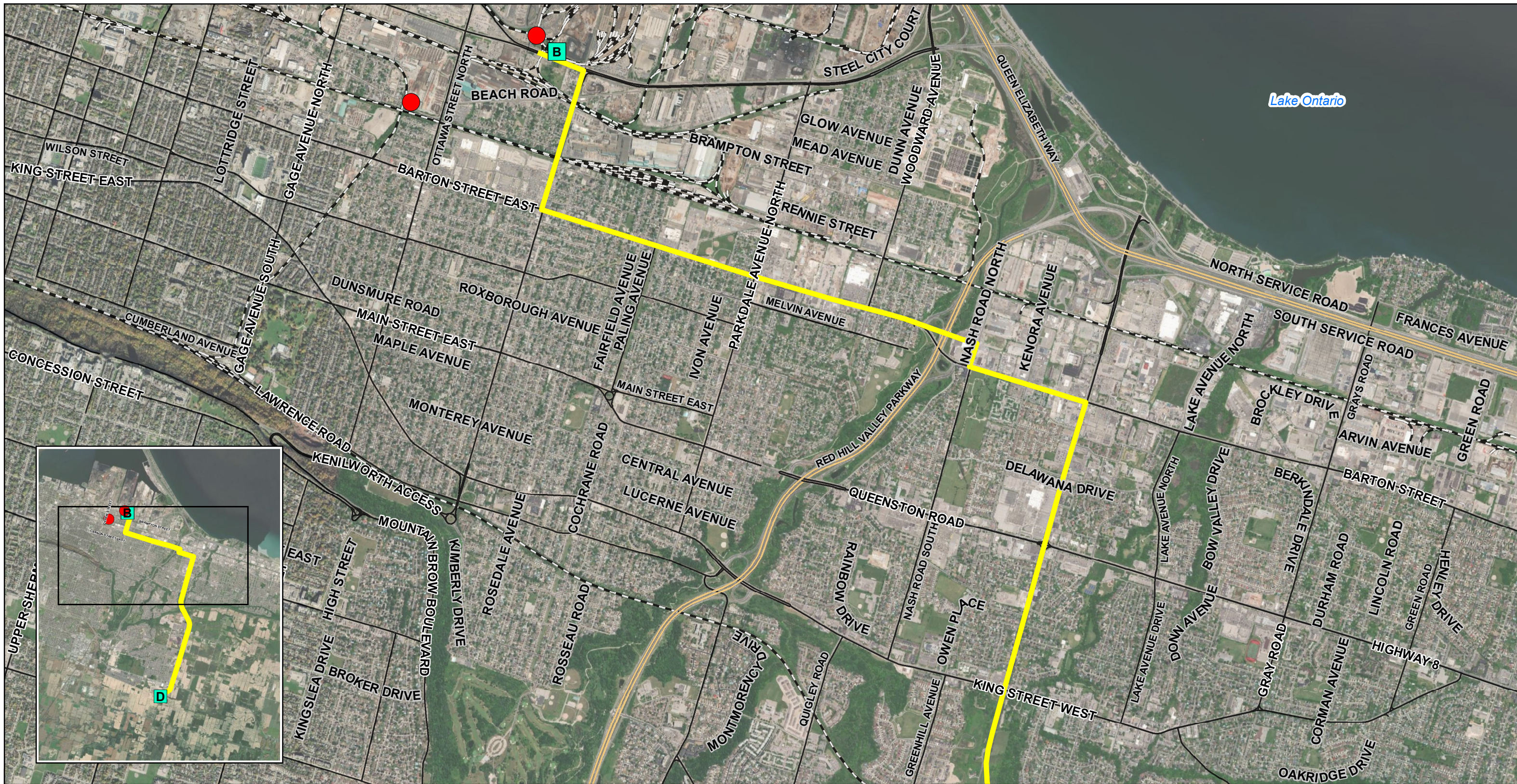


MAP DRAWING INFORMATION:  
 DATA PROVIDED BY MNRF, ENBRIDGE  
 AERIAL PROVIDED BY ESRI

MAP CREATED BY: DU  
 MAP CHECKED BY: AL  
 MAP PROJECTION: NAD 1983 UTM Zone 17N

SCALE 1:55,000





- Proposed Station Rebuild
- Proposed Station (Approximate)
- Alternative Route 1
- Expressway / Highway
- Major Roads
- Local / Street
- Railway

**ALTERNATIVE ROUTE 1**

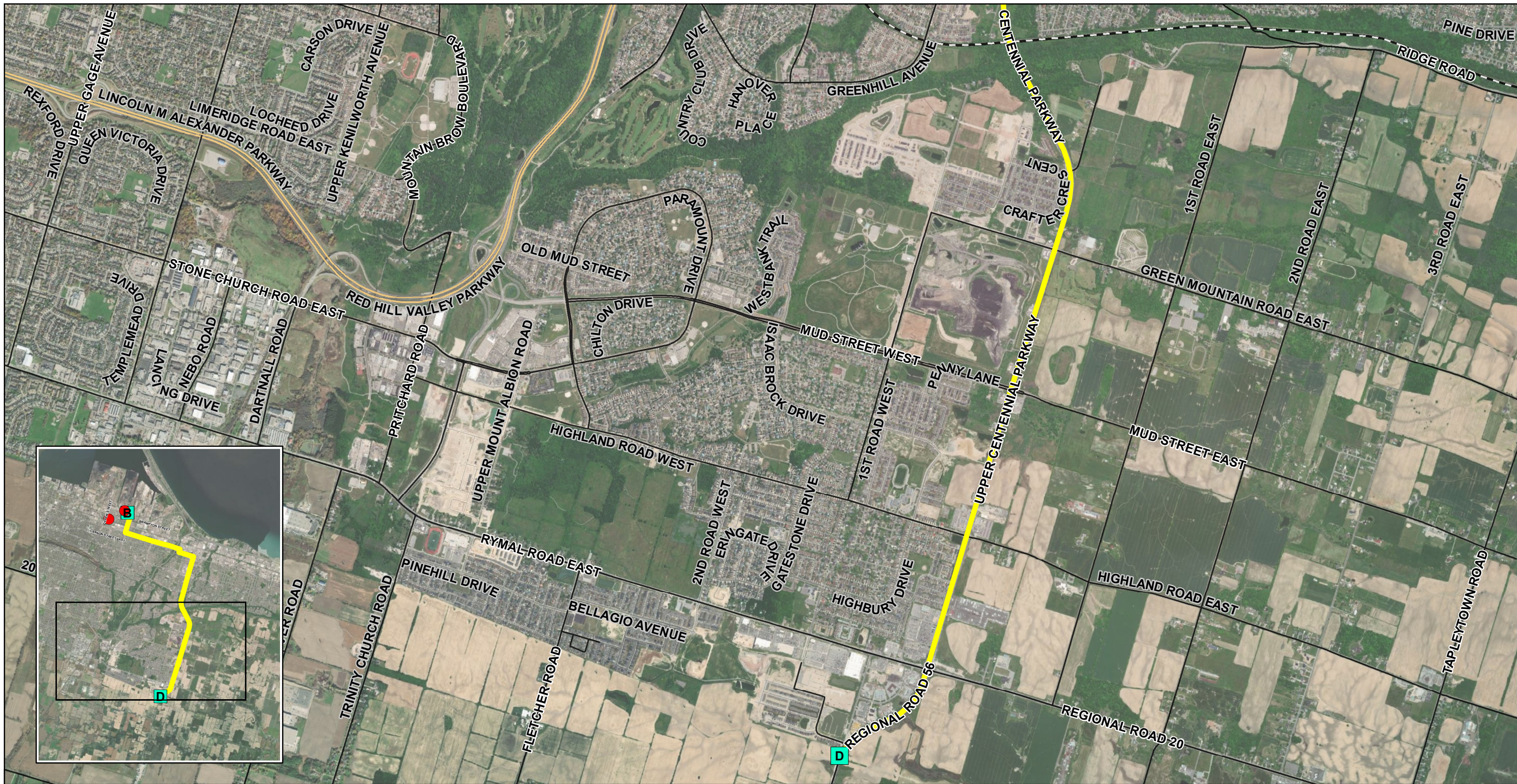


MAP DRAWING INFORMATION:  
 DATA PROVIDED BY MNRF, ENBRIDGE  
 AERIAL PROVIDED BY ESRI  
 MAP CREATED BY: DU  
 MAP CHECKED BY: AL  
 MAP PROJECTION: NAD 1983 UTM Zone 17N

SCALE 1:25,000

0 250 500 1,000 Meters

PROJECT: 22-5167 STATUS: DRAFT DATE: 2023-02-17



- Proposed Station Rebuild
- Alternative Route 1
- Major Roads
- Railway
- Proposed Station (Approximate)
- Expressway / Highway
- Local / Street

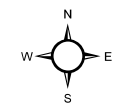
**ALTERNATIVE ROUTE 1**



MAP DRAWING INFORMATION:  
DATA PROVIDED BY MNRF, ENBRIDGE  
AERIAL PROVIDED BY ESRI

MAP CREATED BY: DU  
MAP CHECKED BY: AL  
MAP PROJECTION: NAD 1983 UTM Zone 17N

SCALE 1:25,000



PROJECT: 22-5167 STATUS: DRAFT DATE: 2023-02-17